

ROLE MODELS FOR THE NEW MILLENNIUM

All vehicles compared are model year 2000	NISSAN ALTIMA GXE	TOYOTA CAMRY CE	HONDA ACCORD SEDAN LX
PRICE	\$23,798 MSRP	\$26,070 MSRP	\$25,300 MSRP
AUTOMATIC/AIR CONDITIONING/CRUISE CONTROL	Standard	Optional	Standard
POWER WINDOWS/DOOR LOCKS	Standard	Optional	Optional
HORSEPOWER	155-HP	133-HP	150-HP
AM/FM/CD	Standard	Optional	Optional
REMOTE KEYLESS ENTRY	Standard	Optional	Optional
15" WHEELS	Standard	Smaller	
P205 TIRES	Standard	P195	P195
WOODTONE INTERIOR TRIM	Standard	N/A	N/A
8 WAY ADJUSTABLE DRIVER SEAT	Standard	N/A	N/A
60/40 SPLIT FOLDING REAR SEAT	Standard	Standard	N/A

The Nissan Altima GXE blows Accord and Camry off the chart - for about \$1,200 less

Why pay more to drive a runner up? The Nissan Altima also beats Camry in front and rear head room. Plus, neither Camry nor Accord gives you the elegance of wood-tone trim. Want more? Altima GXE's standard features include • keyless remote entry • power trunk release • dual illuminated vanity mirrors, and more.

All in a car that has done something else that neither of its competitors can boast - only Altima has earned J.D. Power and Associates ranking as the "Best Entry Midsize Car In Initial Quality In the U.S. 3 Out Of The Last 4 Years."

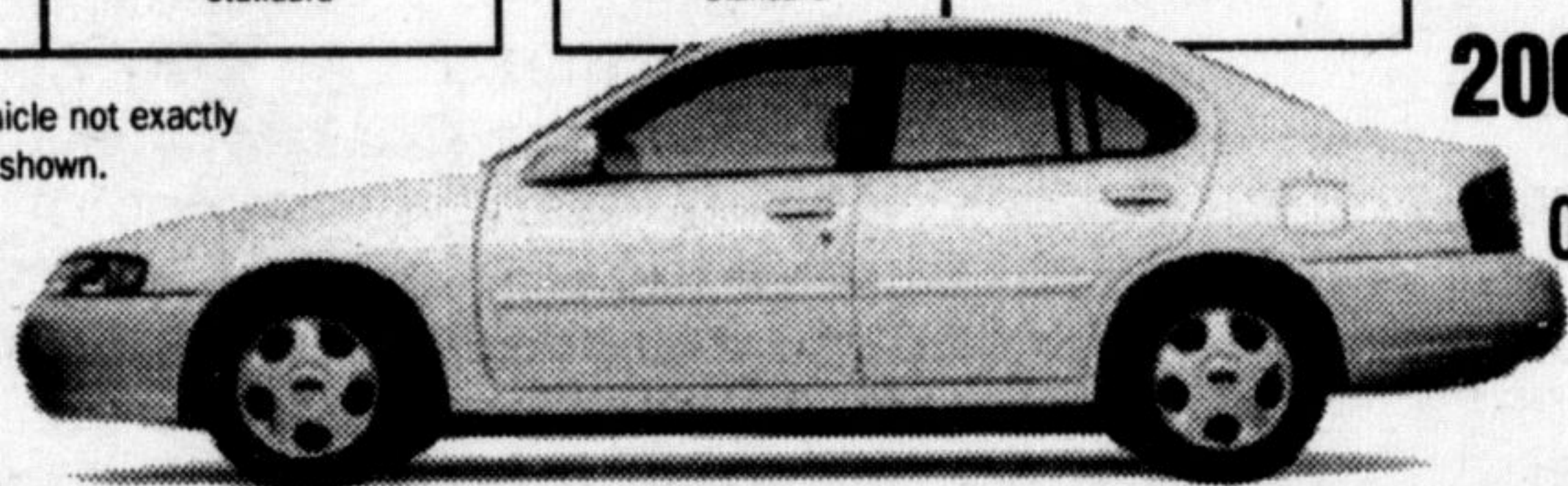
2.8% FINANCE

2000 Altima GXE

OR SPECIAL CASH PRICE*

\$21,998

Vehicle not exactly as shown.



NORTH END NISSAN
610 MARTIN ST. MILTON 878-4137

*Smart people always read the fine print. And they always wear their seat belts. Limited time offer on the 2000 Altima GXE (T4RG 70AE00) (model shown with optional alloy wheels) 2.8% financing for terms up to 36 months, 3.8% for 48 months, 4.8% for 60 months. See dealer for all financing packages and lease packages. On approved credit. Freight & taxes extra. Driven & the Nissan logo are Nissan trademarks.

Vehicle Durability Survey...

Continued from page 19

years 1995, 1996 & 1997). Based on member feedback in the Vehicle Durability Survey, following the Camry the "best cars" are the Toyota Corolla, Honda Accord, Honda Civic, and the Oldsmobile 88/88 Royale.

•Top ten purchases for "next time" (in order): the Plymouth Voyager (includes Dodge Caravan/Chrysler Town & Country Wagon), the Toyota Camry, Honda Accord, Toyota Corolla, Ford Taurus/Mercury Sable, Honda Civic, Ford Windstar, Ford Crown Victoria/Mercury Grand Marquis, Dodge Intrepid and the Buick LeSabre.

•What members drive: 68 percent drive vehicles from North American manufacturers, 27 percent drive vehicles from Japanese and Asian auto-makers and 5 percent drive European makes.

•Members satisfaction levels by

manufacturer: 70 percent satisfaction levels for North American manufacturers, 78 percent for the Europeans and 83 percent for Japanese and Asian auto-makers.

•Cellular phone owners: 23 percent of respondents own cell phones.

About The Survey

CAA gathers information on used vehicle reliability as judged by car owners themselves, not test drivers. Began nationally in 1980, the Vehicle Durability Survey gives CAA clubs valuable information to answer members' questions when purchasing new or used cars, such as: frequency-of-repair records for various models; satisfaction ratings for each manufacturer and for each model; annual repair costs; fuel consumption averages; and many other consumer information items.

For the past two years, Ekos

Research has conducted the survey on behalf of CAA. From a random mailing of 100,000 members, CAA received 24,034 responses in the fall of 1998. The complete findings from the Vehicle Durability Survey are published in CAA's Autopinion '99 magazine, available at news stands or CAA clubs.



SENTINEL AUTOMOTIVE
HI-TECH SERVICE WITH OLD FASHION VALUE

Safety Inspections, Major & Minor Repairs, Tune-ups, Brakes, Engines, Diesel Repair, Air Conditioning, Towing, Rads, Gas Tanks, Exhaust, Emission Pretesting

2 Licensed Technicians

342 BRONTE ST. S., #12 & #13 MILTON 878-8066

AUTOTOWNE



1993 Taurus GL, V6, Auto, A/C, P/W & P/L, \$4,195

AUTOPRO West End Auto Service
5 Main St. E. 878-5323



1996 Nissan Sentra XE, Standard, A/C, 47,000 Kms, Balance of Nissan Warranty.

AUTOPRO West End Auto Service
5 Main St. E. 878-5323



1996 Honda Civic-EX 4 Dr Auto, A/C, Cruise, P/W, P/DL, 65,000 kms, Balance of Honda Warranty.

AUTOPRO West End Auto Service
5 Main St. E. 878-5323



1994 GMC Safari XLT Loaded, 100,000 Kms, Finished in aqua blue & silver 1 Year warranty \$ 11,900

slessor MOTORS 388 Main St. 875-0089

BEST PICKS

