

# Milton Means Business

## Electrolysis College under one roof with schools for personal support workers and alternative medicine

By IRENE GENTLE  
The Champion

**H**olistic health care is forming a united front with the affiliation of three schools in Milton.

The current Milton campus of the Electrolysis College of Canada (ECC) will soon be opening its doors to the Medix School and the University of Alternative Medicines (UAM).

All will function out of 550 Ontario St., Suite 203, at Derry Road.

Medix specializes in the training of personal support workers, otherwise known as home support workers or health care aides.

Home health care is a growth business throughout North America.

As the population ages, hospitals are squeezed for space and people opt for more control over their health.

That makes it a boom market for personal support workers.

A 21-week course of half-day Medix classes are set to begin in the new year.

Graduates of the program will have the choice of working in private residences, long-term care facilities and hospitals.

The placement rate at the school's London location is 96 per cent. The Milton site will back the claim up by offering a life-time placement service to its graduates.

In the enlightened 1990s, more and more people have

been taking their health into their own hands by exploring alternative methods of healing.

Acupuncture, traditional Chinese medicines, colour-therapy, Sujok acupuncture, iridology, aromatherapy, herbology and auricular and ayurvedic medicines all fall under the umbrella of the UAM.

Classes, which are designed to conform with World Health Organization guidelines, are scheduled to begin in January, 2000.

And UAM also has a mandate to educate the public on alternative medicines. To that end, experienced practitioners will be available to provide treatments to the public.

The Electrolysis College of Canada also provides treatments for the public, while courses focus on professional hair and skin technology. Electrolysis and advanced laser and dermatological applications are on the curriculum.

The ECC has been a well-kept secret in Milton that will likely be blown wide open with the affiliation with the two other schools, said its director Judith Finn.

She noted that students come from all over to take courses at the college, but local residents are often unaware that the school exists.

For more information, call the Medix School at 1-800-695-2414 or visit the Milton campus.

For the International University of Alternative Medicines, which is affiliated with the Medicina Alternativa Institute, call (905) 563-1303.

For information on the ECC, call 878-9113 or 878-3945.



Photo by GRAHAM PAINE

Holistic healthcare has come to Milton with the affiliation of three health-oriented schools. Helping it happen (left to right) are Medix School director of admissions Andrew Wright, Medix school admissions representative Andre Motuzas, Electrolysis College of Canada director Judith Finn, and Prof. Dr. Sir M.R. Mehran Hakimegad of the University of Alternative Medicines.

## Gift Wrap a new Nissan with two great choices

FINANCE RATES AS LOW AS **4.8%\*** PLUS **NO INTEREST, PAYMENTS FOR 90 DAYS\*\***  
OR  
WE'LL MAKE YOUR FIRST **2 LEASE PAYMENTS.\*\*\***

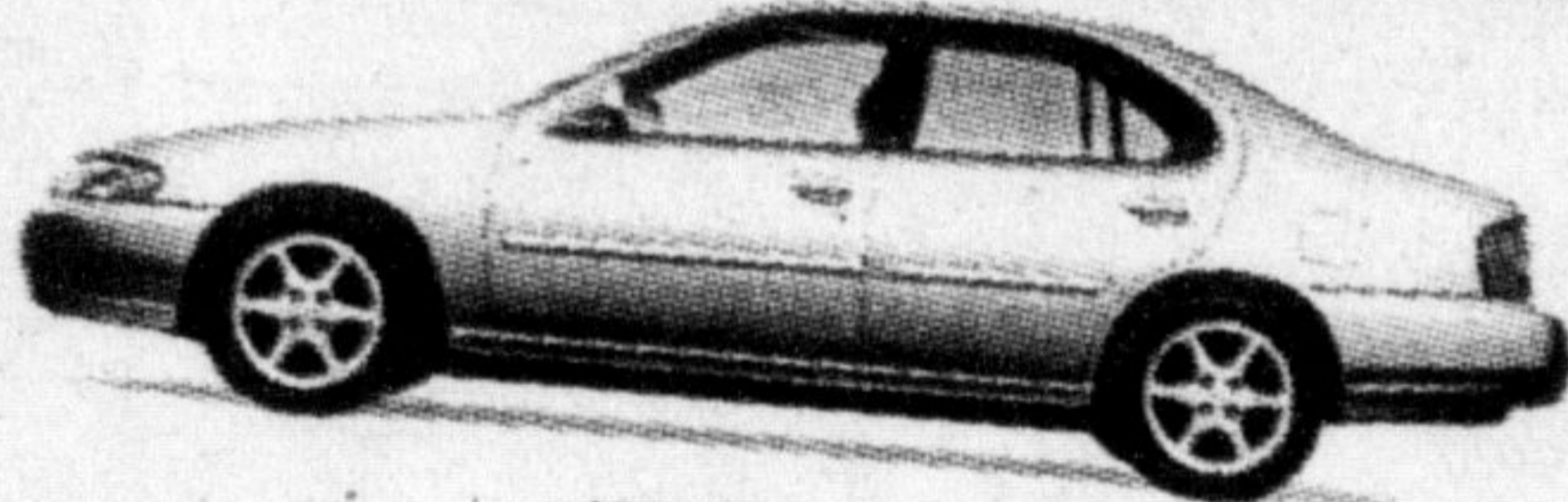
**2000 Maxima GXE**  
\$398/mo. lease for 48 months.  
Only \$3,000 down.



"...simply the best V6 engine"  
- WARD'S Auto World

• 222-HP 3.0-litre V6 engine with automatic transmission • 120-watt 6-speaker premium AM/FM/CD with cassette audio system • Automatic climate-control air conditioning • 8-way adjustable driver's seat • Heated seats • Power windows, door locks and mirrors • Remote keyless entry with vehicle immobilizer system and more...

**2000 Altima GXE** \$298/mo. lease for 48 months. Only \$1,500 down.



"Best Entry Midsize Car in Initial Quality in the U.S. 3 Out of the Last 4 Years."  
- J.D. Power and Associates

• 155-HP 2.4-litre engine - that's bigger and more powerful than Camry and Accord 4-cylinder models • 100-watt AM/FM/CD audio system • 4-speed automatic transmission and air conditioning • cruise control • remote keyless entry system with panic alarm • Power windows, mirrors, door locks and trunk release • Elegant wood-tone trim • 8-way adjustable driver's seat, dual illuminated vanity mirrors and more...

**2000 Pathfinder SE**  
\$428/mo. lease for 48 months.  
Only \$4,000 down.



Canada's #1-selling V6 Import SUV 7 years running

• 170-HP 3.3-litre V6 engine • Automatic transmission and air conditioning • 16" alloy wheels • Power sunroof, windows, door locks and heated mirrors • Bose® 150-watt 6-speaker AM/FM/CD with cassette audio system • Step rails and roof rack • Remote keyless entry and anti-theft system • Vehicle immobilizer system • Privacy glass and more...



DRIVEN.

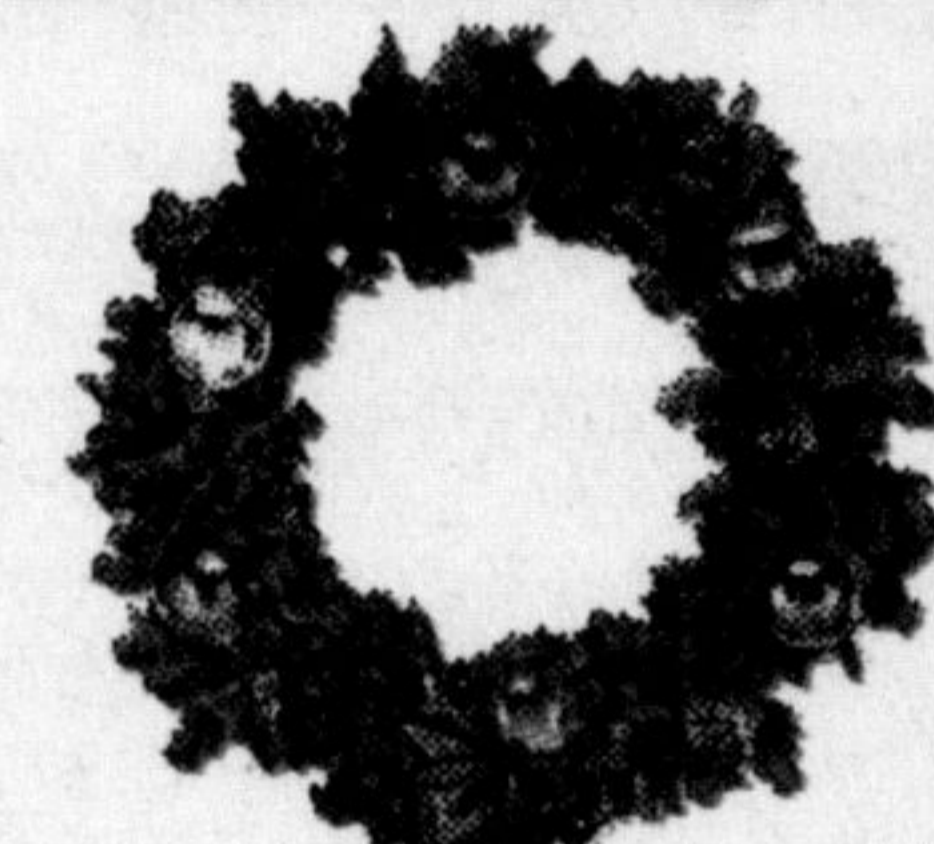
**DECEMBER ONLY!**

For more information or the location of your nearest Dealership, visit our Web site at [www.nissancanada.com](http://www.nissancanada.com) or call 1-800-387-0122.

**NORTH END NISSAN**  
610 MARTIN ST. MILTON  
878-4137

\*FRI., PDI, LIC, EXTRA. Financing available OAC. Special lease packages on request. See dealer for details.

OFFER ENDS JANUARY 3, 2000. Limited-time offer on 2000 Altima GXE (T4RG70AED0) (model shown with optional alloy wheels). 48-month lease 6.79% A.R. down payment or equivalent trade of \$1,500. Altima lease based on maximum of 96,000 km with excess km charged at \$0.08/km. Offer is O.A.C. and excludes destination and delivery of \$315. Licence, insurance and taxes. Dealers free to set individual selling price. See your Nissan Dealer for details. \*4.8% APR available on Altima, 36-month term. \*\*First payment due 120 days after delivery on finance purchases. Financing example \$20,000 at 4.8% per annum equals \$397.62 for 36 months. C.O.B. is \$1,514.32 for an obligation total of \$21,514.32. \*\*\*First payment due 60 days after lease signing, security deposit due at lease signing. †The Nissan Altima was the highest ranked entry midsize car in J.D. Power and Associates' 1998-97 and 1999 U.S. Initial Quality Studies 2™. 1999 study based on a total of 41,004 U.S. consumer responses indicating owner-reported problems during the first 90 days of ownership. www.jcpower.com. ††THE BEST BUY SEAL is a registered trademark of Consumers Digest. Inc. used under licence. †††Based on comparisons with 2000 Import lower-middle sedans. Driven and the Nissan logo are Nissan trademarks.



### GIVE A GOOD FEELING & TASTE

**Gift Certificates**

Buy \$25, get \$30  
Keep the glass.

**New Years Eve  
Be Here!**

### Two great deals at Crown Hill and Spikes.

Call Carolyn to inquire.  
Spend a night, not a fortune.

- Draw for door prizes;
- Toronto Maple Leafs leather jacket
- Tickets to NHL home game
- Premium sweat shirts

#### Draw Tickets

1-\$5.00  
3-\$10.00  
8-\$20.00

All winners must be present at time of draw.

**GOOD LUCK!**

### This Weekend at Spikes

Fri.- Finest Hour  
Sat.- Johnnie Phatt

Your "Number 1" Alternative!  
Good Friends Gathering

575 Ontario St, Milton  
Corner Derry Rd. & Hwy. 25

Call 876-1186

