

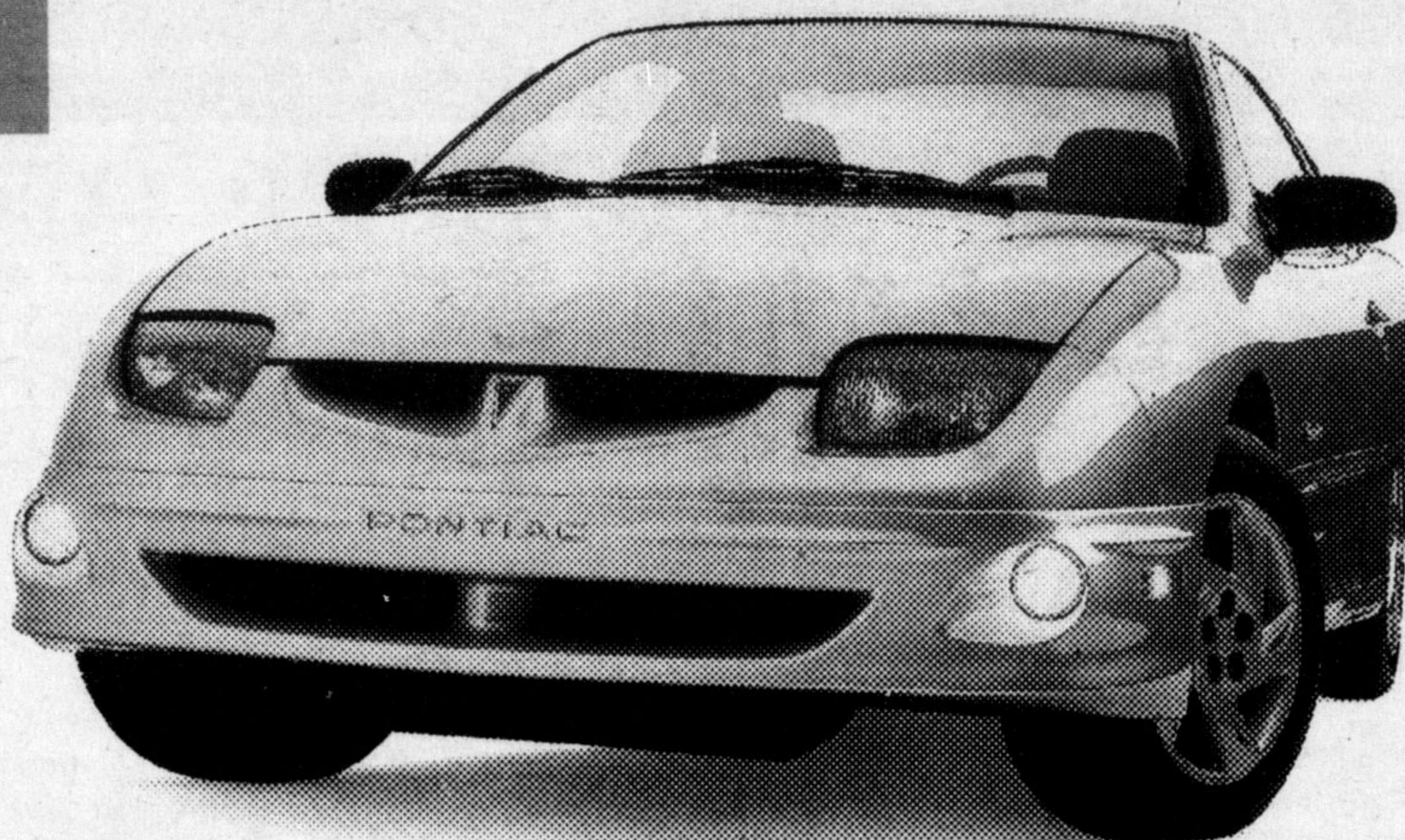
# PERFORMANCE PREMIERE.

WE'RE UNVEILING OUR 2000 LINEUP.

## 2000 PONTIAC SUNFIRE COUPE

### SUNFIRE 2000 VALUE PACKAGE

- 5-SPEED GETRAG TRANSMISSION**
- 6-SPEAKER CD PLAYER
  - Upgraded 15" Wheels • Anti-Lock Brake System • PASSLock® II Security System • 2.2 L 115 HP Engine
  - Tinted Glass • Rear Spoiler



Add Air Conditioning OR Automatic Transmission for an additional \$15\* a month on your SMARTLEASE Payment. OR get both for an additional \$30\* a month.

GRADUATE PROGRAM \$1000 OFF THE PURCHASE OR LEASE OF A NEW GM VEHICLE

| LEASE OPTIONS |               |                      |
|---------------|---------------|----------------------|
| Down Payment  | Lease Payment | Total Due On Signing |
| \$0           | \$231         | \$1,433.90           |
| \$1,520       | \$188         | \$3,132.45           |
| \$3,000       | \$146         | \$4,786.15           |

Total due on signing includes down payment, freight, security deposit, 1<sup>st</sup> month's payment plus taxes. Licence, insurance, P.P.S.A. and admin. fees extra.

PONTIAC SUNFIRE BUILT FOR DRIVERS

### 36 MONTH SMARTLEASE

**\$188\***

**1.9%**

### CASH PURCHASE PRICE

**\$16,158\***

per month/\$1,520 down payment, \$680 freight and \$300 security deposit required

Lease Rate up to 36 months or Purchase Financing up to 48 months<sup>1</sup>

excludes freight \$680

## 2000 PONTIAC SUNFIRE SEDAN

### SUNFIRE 2000 VALUE PACKAGE

#### REMOTE KEYLESS ENTRY WITH AUDIBLE ALARM THEFT SYSTEM

- Power Locks • Air Conditioning
- 4-Speed Automatic with Enhanced Traction System
- Anti-Lock Brake System • Cruise Control • AM/FM Cassette • 2.2 L 115 HP Engine • Upgraded 15" Wheels • PASSLock® Theft-Deterrent System
- Rear Spoiler



GRADUATE PROGRAM \$1000 OFF THE PURCHASE OR LEASE OF A NEW GM VEHICLE

| LEASE OPTIONS |               |                      |
|---------------|---------------|----------------------|
| Down Payment  | Lease Payment | Total Due On Signing |
| \$0           | \$261         | \$1,468.40           |
| \$1,520       | \$218         | \$3,166.95           |
| \$3,000       | \$176         | \$4,820.65           |

Total due on signing includes down payment, freight, security deposit, 1<sup>st</sup> month's payment plus taxes. Licence, insurance, P.P.S.A. and admin. fees extra.

### 36 MONTH SMARTLEASE

**\$218\***

**1.9%**

### CASH PURCHASE PRICE

**\$18,698\***

per month/\$1,520 down payment, \$680 freight and \$300 security deposit required

Lease Rate up to 36 months or Purchase Financing up to 48 months<sup>1</sup>

excludes freight \$680

PONTIAC SUNFIRE BUILT FOR DRIVERS

## 2000 PONTIAC GRAND AM

### 2.4 Litre Twin Cam 150 HP Engine

- 4-Speed Automatic Transmission with Enhanced Traction System
- 4-Wheel Anti-Lock Braking System
- 4-Wheel Independent Suspension
- Next Generation Driver and Front Passenger Air Bags • PASSLock® Theft-Deterrent System • AM/FM Stereo Cassette • Power Door Locks • Air Conditioning
- Tilt-Wheel™ • Rear Spoiler



PONTIAC GRAND AM BUILT FOR DRIVERS

| LEASE OPTIONS |               |                      |
|---------------|---------------|----------------------|
| Down Payment  | Lease Payment | Total Due On Signing |
| \$0           | \$332         | \$1,696.05           |
| \$2,430       | \$258         | \$4,305.45           |
| \$4,000       | \$211         | \$6,056.90           |

Total due on signing includes down payment, freight, security deposit, 1<sup>st</sup> month's payment plus taxes. Licence, insurance, P.P.S.A. and admin. fees extra.

### CHOOSE 2 DOORS OR 4 DOORS

36 MONTH SMARTLEASE

**\$258\***

PURCHASE FINANCE

**1.9%**

CASH PURCHASE PRICE

**\$20,668\***

per month/\$2,430 down payment, \$720 freight and \$300 security deposit required

Up to 48 months<sup>1</sup>

excludes freight \$720

## 2000 PONTIAC GRAND PRIX GT

### 3.8 Litre Series II V6 200 HP Engine

- 4-Speed Automatic Transmission with Enhanced Traction System
- 4-Wheel Anti-Lock Braking System
- Next Generation Driver and Front Passenger Air Bags • PASS-Key® III Theft-Deterrent System • Wide Track Stance • Remote Keyless Entry
- AM/FM Stereo with CD • 16" Aluminum Wheels • Air Conditioning
- Rear Spoiler • Rear Seat Pass-Thru
- Power Windows/Locks • Tilt-Wheel™
- Cruise Control



PONTIAC GRAND PRIX BUILT FOR DRIVERS



| LEASE OPTIONS |               |                      |
|---------------|---------------|----------------------|
| Down Payment  | Lease Payment | Total Due On Signing |
| \$0           | \$400         | \$1,981.50           |
| \$2,700       | \$318         | \$4,892.20           |
| \$5,000       | \$249         | \$7,382.85           |

Total due on signing includes down payment, freight, security deposit, 1<sup>st</sup> month's payment plus taxes. Licence, insurance, P.P.S.A. and admin. fees extra.

### CHOOSE 2 DOORS OR 4 DOORS

36 MONTH SMARTLEASE

**\$318\***

### CASH PURCHASE PRICE

**\$26,858\***

per month/\$2,700 down payment, \$835 freight and \$375 security deposit required

excludes freight \$835

## PONTIAC MONTANA M2K



### 3.4 Litre V6 185 HP Engine

- 4-Speed Automatic Transmission • 4-Wheel Anti-Lock Braking System • Next Generation Dual Front and Seat-Mounted Side Air Bags
- PASS-Key® III Theft-Deterrent System • Power Windows/Door Locks • Dual Power/Heated Mirrors • Dual Sliding Doors • Air Conditioning • AM/FM Stereo
- Deep Tint Glass • Tilt-Wheel™



PONTIAC MONTANA BUILT FOR DRIVERS

★★★★★ FIVE STAR SAFETY RATING Pontiac Montana has been awarded 5 stars (the top safety rating) for both driver and rear-seat passenger in side-impact testing\*\*.

| LEASE OPTIONS |               |                      |
|---------------|---------------|----------------------|
| Down Payment  | Lease Payment | Total Due On Signing |
| \$0           | \$358         | \$1,865.95           |
| \$3,460       | \$258         | \$5,605.07           |
| \$6,000       | \$184         | \$8,440.85           |

Total due on signing includes down payment, freight, security deposit, 1<sup>st</sup> month's payment plus taxes. Licence, insurance, P.P.S.A. and admin. fees extra.

### 36 MONTH SMARTLEASE

**\$258\***

### PURCHASE FINANCE

**2.9% OR 1.9% OR**

### CASH PURCHASE PRICE

**\$24,458\***

per month/\$3,460 down payment, \$895 freight and \$300 security deposit required

LEASE RATE up to 48 months<sup>1</sup>

excludes freight \$895



## AUTO INSURANCE SAVINGS

FROM MOTORS INSURANCE CORPORATION - THE INSURANCE PEOPLE FROM GENERAL MOTORS. VISIT YOUR PONTIAC•BUICK•GMC DEALER AND CALL MIC FOR A FAST, NO OBLIGATION AUTO INSURANCE QUOTE.Δ

FOR A LIMITED TIME. ONLY AT YOUR ONTARIO PONTIAC•BUICK•GMC DEALER

We'd like you to know more: Come visit us at your local dealer, on our website at [www.gmcanada.com](http://www.gmcanada.com) or call 1-800-GM-DRIVE. \*Offers based on Sunfire Coupe R7Z/Sunfire Sedan R7Z/Grand AM R7Z/Grand Prix GT R7Z/Montana 1SA R7Z. Annual cost of borrowing 1.9%/1.9%/5.9%/5.9%/2.9% per annum. Annual kilometre limit 20,000 km, \$0.12 per excess kilometre. Other lease options available. †(Freight (as indicated), licence, insurance, P.P.S.A., administration fees, and taxes not included. Dealers are free to set individual prices. Financing on approved GMAC credit only. Example: \$10,000 at 1.9% APR, the monthly payment is \$216.52 for 48 months. Cost of borrowing is \$392.96. Total obligation is \$10,392.96. Down payment, trade and/or security deposit may be required. Monthly payment and cost of borrowing will vary depending on amount borrowed and down payment/trade. ‡The SMARTLEASE monthly payment and the GMAC purchase finance rate is not calculated on the "Cash Purchase" price as shown. The difference between the price for the SMARTLEASE/GMAC Purchase Finance offer and the "Cash Purchase" offer is deemed under provincial disclosure laws to be a cost of borrowing, whether or not the same represents actual interest and is required to be expressed as an annual percentage rate which is 4.62% (Montana 1SA R7Z). ††Offers apply to select 2000 new or demonstrator models equipped as described, and to qualified retail customers in the Ontario Dealer Marketing Association area only. Dealer order or trade may be necessary. Limited time offer which may not be combined with other offers. Some restrictions may apply. See your dealer for conditions or details. ΔYour GM Dealer is not licensed as an insurance broker, and is not acting as an agent or broker or in any other capacity on behalf of Motors Insurance Corporation. Available to residents of Ontario only. †Based on \$188/month SMARTLEASE with \$1,520 down payment. \*Graduate rebate subject to program rules. \*\*Testing conducted by the National Highway Traffic Safety Administration (NHTSA).

