

Santa Claus Parade

✓ **Get your float entries in: organizers**

Old St. Nick may be coming to town for Milton's annual Santa Claus parade, held Sunday, Nov. 14, but organizers are looking hard-pressed to say who exactly will be joining him.

The parade may be less than three weeks away but organizers have not exactly been

buried under an avalanche of float entry forms, observed parade chair Laura McKee.

"I don't have a count, but there is not a lot," she said.

Typically, up to 85 floats turn out for the parade, which will be celebrating its 25th

year in Milton this November. But just as typically, the entry forms come in at the last minute, said Ms McKee.

"Always we're sitting there the Friday night before the parade still getting entries," she said. "You get used to it. This is my fifth year doing it."

To mark the last procession of the millennium as well as the 25th anniversary of the Milton parade, organizers were hoping to make a big splash this year with more floats and bigger, better marching bands. It's a dream they still hope will come true.

"I'm getting 10 or 12 calls a day from people asking about entry forms," said Ms McKee. "A lot of people have started (their floats) already but they just haven't started the paperwork."

But other aspects of the parade, assured Ms McKee, are coming along nicely.

So far, 12 bands have been booked, including the Top Hats and the Teen Tour Band out of Burlington. Fundraising is also on schedule.

But people are still needed to come on board as clowns or characters for the parade, said Ms McKee, who asked that they call her directly at 878-6347.

"It is getting a little late to contact anyone else," she said.

She has also requested that anyone planning a float fax their entry form in at 878-7696.

"That would be great," she said. "Please get your entry forms in."

As always, the parade will run from the Milton Fairgrounds to Loblaws. Entry forms are available at the community services department of Town Hall, both Subway locations and Mail Boxes Etc.

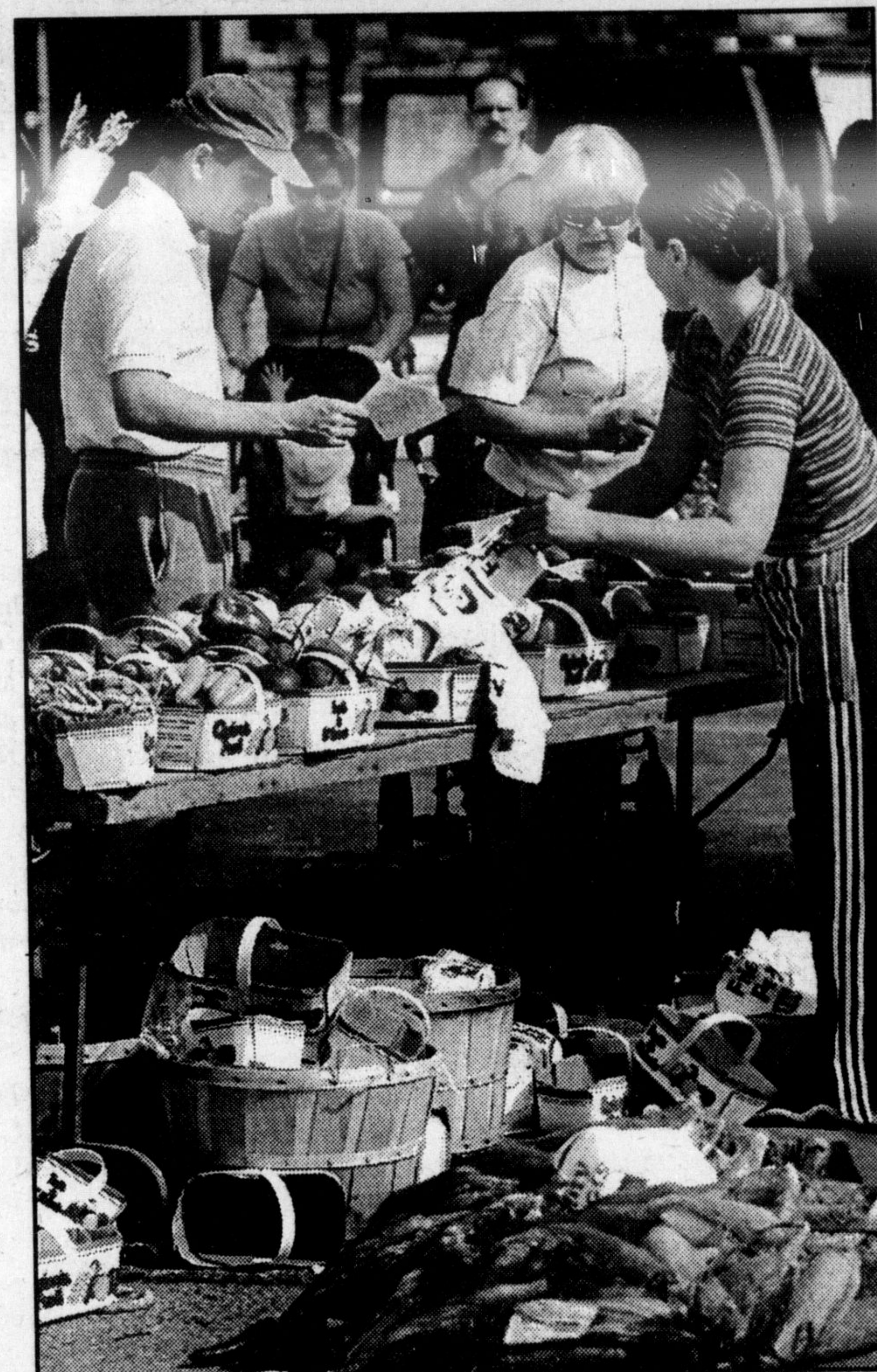


Photo by GRAHAM PAINE

✓ **Farmers' finale**

Christina Piazza of Teresa's Garden Centre helps bag a few fresh peppers for customers at the Milton Farmers' Market, which wraps up for another year tomorrow morning.

- MORE!** selection when looking for a bird feeder.
- MORE!** selection when looking for bird feeder accessories to hang or mount your feeder.
- MORE!** selection when looking for bird seed which suits your bird feeder.
- LESS!** cost when choosing a quality made feeder.
- LESS!** cost when choosing the best bird seed in town.
- LESS!** cost on everything we sell in our store.



MacKinnon Waterfalls & Ponds

724 Main St. E., Milton

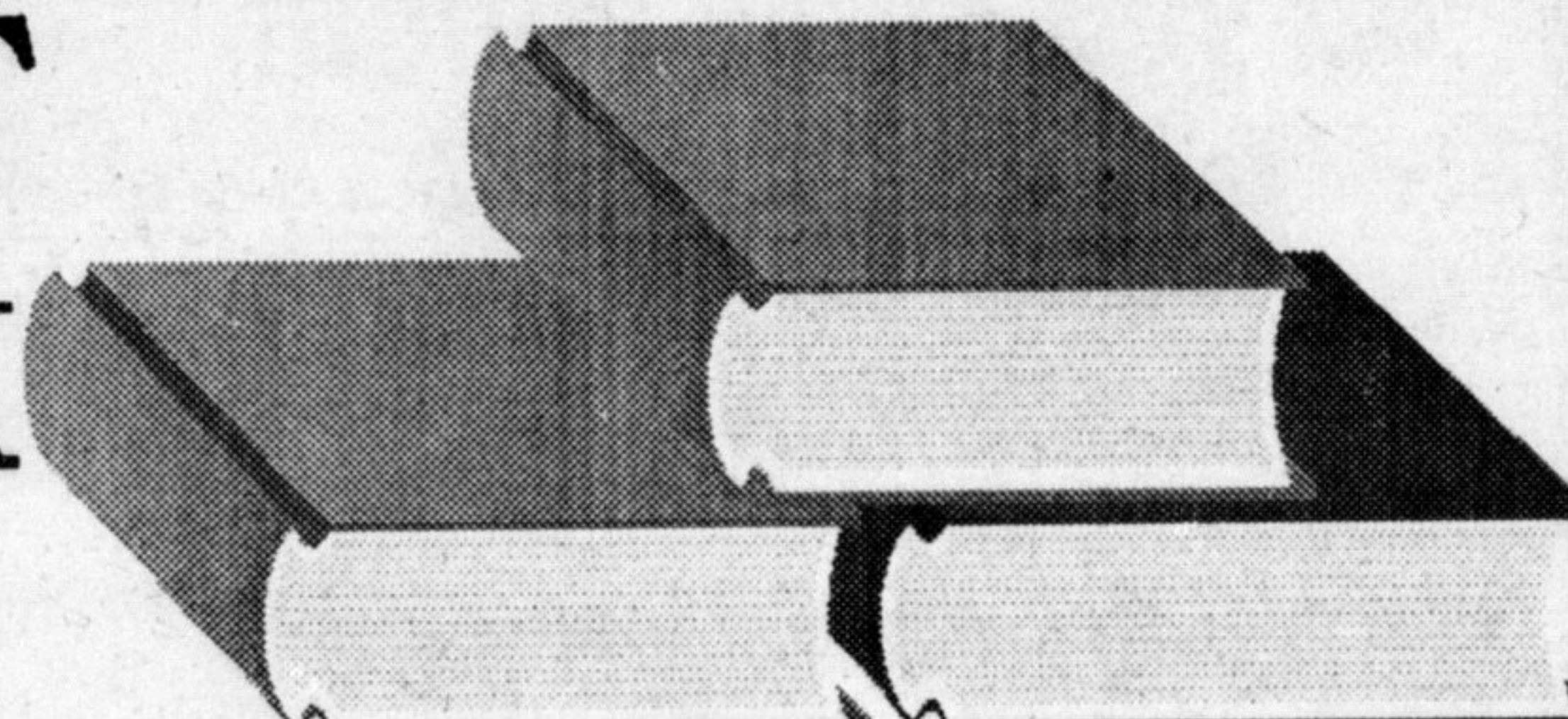
(Just West of the GO Station)

1-905-876-2836



Oh Yeah! We are still your No. 1 Pond & Water Gardening Store.

GIANT BOOK SALE



OPEN TO THE PUBLIC FOR THE SIXTH YEAR

Rodale Press and D.D.H. Distribution Services are pleased to open their doors to the public for their

SIXTH ANNUAL COMMUNITY BOOK SALE

Featuring Fantastic Selections from Health, Cooking, Gardening & a small selection of Crafts, Quilting & Sewing

ALL FOR \$10.00 OR LESS!!

These books have retail values of up to \$50.00!!

There will be over 100 titles such as ... Food and You, Quick Country Quilts for Every Room, The Green Pharmacy, Perennial All Stars, to name but a few.

Spread the Word and Plan to Attend

ONLY ONE DAY

SATURDAY, NOVEMBER 6 FROM 9:00 AM TO 4:00 PM

AT D.D.H. DISTRIBUTION SERVICES LTD.

100 ARMSTRONG AVE., GEORGETOWN

Note NEW LOCATION: Sinclair Avenue Entrance to D.D.H. Distribution GEORGETOWN

Cash and Personal cheques are acceptable but NO credit cards can be honoured.

ALL SALES ARE FINAL AND BOOKS ARE SOLD AS IS.

QUANTITIES MAY BE LIMITED

(MAXIMUM 5 PER TITLE)

Rodale and D.D.H. Distribution are offering this as a Community Service and a portion of the proceeds will be donated to various Local Charities and Educational Institutions.

FOR **all** YOUR **ADVERTISING NEEDS**

contact the **Champion TEAM**



Karen



Carolyn



Wendy



Linda



Lana

The Canadian Champion
Milton's Choice - Since 1860