

Halton small business owners gather to network

Small business is expected to draw a big crowd at Halton Region Thursday.

About 400 guests are expected for a wine and cheese reception held in celebration of Small Business Week. The event is part of a Chamber of Commerce initiative, Business After Five.

It is normally held by a number of businesses

throughout the year. But 1998 was the first time the Region took a stab at it.

"Different businesses throughout the region host it and last year we thought it would be neat if we did," said Halton Chair Joyce Savoline.

The Chamber of Commerce organizations in all four Halton municipalities will be on hand for

the event, which is co-sponsored by Royal Bank.

It will take place from 5 to 7:30 p.m. in the cafeteria of the Halton Regional building, 1151 Bronte Rd., just north of the QEW.

The idea is to provide entrepreneurs with an opportunity to get out and make contacts with each other. "It really does present one of the best

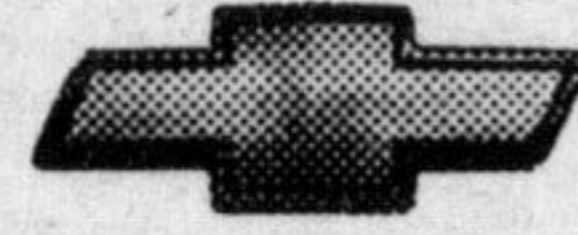
networking opportunities," said Kate Johnston, the Region's Access Halton director. "It is just to gather around and chat with other people."

Though Halton generally defines a small business as one employing 10 or less people, all entrepreneurs are invited to the event.

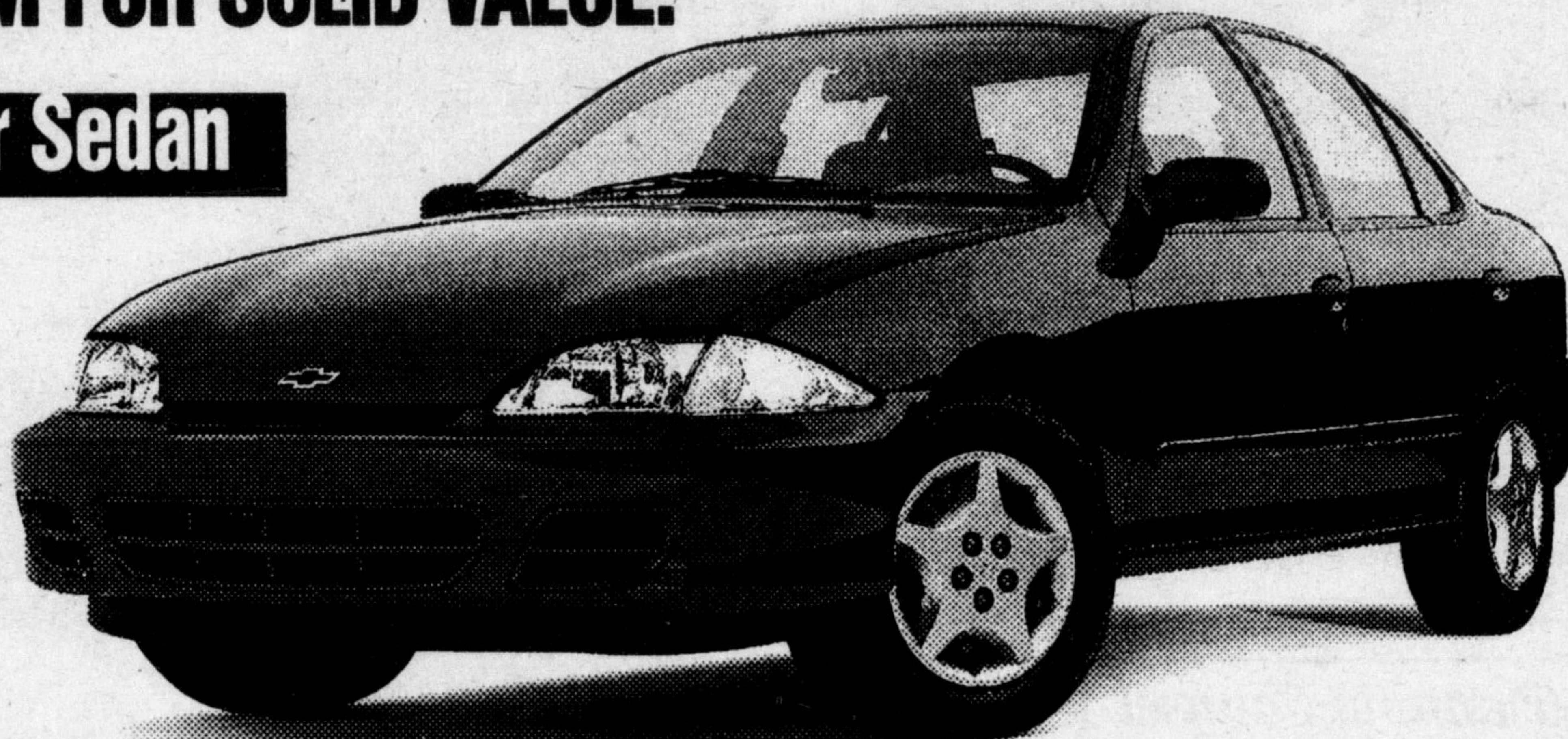
But guests are asked to RSVP at 825-6300.

FRESH OFF THE LINE

DEPEND ON THEM FOR SOLID VALUE.



Chevrolet Cavalier Sedan



2000 CAVALIER SEDAN NO SURPRISE LEASE GUIDE	
MONTHLY PAYMENT (36 month/60,000 km)	\$218
CASH DOWN (includes freight of \$680 and air tax of \$100)	\$2,000
GAS TAX	\$75
PRE-DELIVERY INSPECTION	NO EXTRA CHARGE
PST/GST (incl. fee to be paid)	\$344
SECURITY DEPOSIT	\$300
TOTAL AMOUNT DUE ON DELIVERY	\$2,937

Licence, P.P.S.A. & Admin. Fees Extra
With \$0 down, monthly payment is \$276 (plus tax) - \$729 due on delivery.



Puts You In Complete Control With Up-Front, Full Disclosure Pricing With No Aftershock.

Courier bag key to new video service

• from VIDEO on page 18

plete with gray skies, slush-soaked boots and a chill that cuts straight through to the bone and out again.

Throw in long work days made longer by traffic and who wants to head for the video store to return a movie?

"Ultimately you say 'forget it. It just isn't worth it,'" said Mr. Hibbs. "So what is the problem? The problem is getting the movies back."

That's where he comes in. For a \$30 one-time only sign-up fee, members can have the videos of their choice delivered for \$4.99 a pop. That's about 40 cents more than the average cost of a rental.

And in the month of November, the first 100 people to sign on will receive a free Alan Kingsland limited edition print, worth about \$200 unframed.

The initial fee buys six month's worth of colour catalogues listing all one could ever want to know about available movies, a subscription to upcoming catalogues and an industrial strength courier bag.

The bag is the crucial part of the business.

The drill is simple — after viewing, place videos in the bag. Secure it by its lock and doweling system under the door and leave it on the doorstep by no later than 9 a.m.

A Video Shuttle employee will then come by, unlock the bag and whisk the video away before 10 a.m.

Voila. No more late fees (unless you forget to put the bag out. Then it will cost another \$4.99).

And Mr. Hibbs is not overly concerned about the videos being stolen.

"I don't anticipate much in the way of theft because no one will know what is in it," he said. "It could be a real mickey mouse movie."

Already, about 280 people have signed on for the service that delivers to Milton and south Georgetown.

"It is amazing. It is unbelievable. It is getting scary," he said.

"People are signing up like crazy. They are preparing us for the first rainy or snowy day."

Convinced that this is an idea with legs, the Milton store is acting as a sort of test market for Mr. Hibbs.

Ultimately, he wants to take the premise on the road through franchising.

"Today's problem is time and the lack of it. If you can offer a good service at a reasonable price, people will pay for it," he said.

"I didn't do this with the idea of opening a little mom and pop store."

To reach the greatest number of potential clients, the system is geared to work in apartment buildings as well as homes.

And accessing information on the latest flicks is as easy as browsing through the store's website at videoshuttle@for-movies.com.

The store is open from 11 a.m. to 9 p.m., seven days a week.

CAVALIER 2000 VALUE PACKAGE

REMOTE KEYLESS ENTRY - PLUS DUAL THEFT-DETERRENT SYSTEM • POWER DOOR LOCKS • AIR CONDITIONING
• 4-Speed Automatic with Traction Control • Anti-Lock Brake System
• Cruise Control • AM/FM Cassette • 2.2 L/115 HP Engine

SMARTLEASE **\$218** **1.9%** **PURCHASE PRICE \$18,845**

36 MONTHS LEASE RATE UP TO 36 MONTHS OR PURCHASE FINANCING UP TO 48 MONTHS. (INCLUDES FREIGHT OF \$680 AND AIR TAX OF \$100. LICENCE, INSURANCE AND TAXES EXTRA.)

PRICE INCLUDES FREIGHT, AIR TAX & PDI.

Chevrolet Cavalier 2000



GRADUATE PROGRAM **\$1000 OFF**

2000 CAVALIER COUPE NO SURPRISE LEASE GUIDE	
MONTHLY PAYMENT (36 month/60,000 km)	\$188
CASH DOWN (includes freight of \$680)	\$2,000
GAS TAX	\$75
PRE-DELIVERY INSPECTION	NO EXTRA CHARGE
PST/GST (incl. fee to be paid)	\$339
SECURITY DEPOSIT	\$300
TOTAL AMOUNT DUE ON DELIVERY	\$2,902

Licence, P.P.S.A. & Admin. Fees Extra
With \$0 down, monthly payment is \$245 (plus tax) - \$608 due on delivery.

CAVALIER 2000 VALUE PACKAGE

5-SPEED GETRAG TRANSMISSION • 4-SPEAKER CD PLAYER
• Upgraded 15" Wheels • Anti-Lock Brake System • PASSLock II Security System • 2.2 L/115 HP Engine • Tinted Glass

SMARTLEASE **\$188** **1.9%** **PURCHASE PRICE \$16,435**

36 MONTHS LEASE RATE UP TO 36 MONTHS OR PURCHASE FINANCING UP TO 48 MONTHS. (INCLUDES FREIGHT OF \$680. LICENCE, INSURANCE AND TAXES EXTRA.)

PRICE INCLUDES FREIGHT & PDI.

Chevrolet Impala 2000



FEATURES:

- 3.4 Litre SFI V6 180 HP Engine
- 4-Speed Automatic Transmission • 6-Passenger Seating • 16" Wheels and Tires • Largest 4-Wheel Disc Brakes In Class • AM/FM Stereo with CD • Remote Keyless Entry • Steering Wheel-Mounted Cruise Control
- Next Generation Driver and Front Passenger Air Bags • PASSLock™ Theft-Deterrent System and Lockout Protection • Air Conditioning • Power Programmable Door Locks/Windows/Mirrors

2000 CHEVROLET IMPALA NO SURPRISE LEASE GUIDE	
MONTHLY PAYMENT (36 month/60,000 km)	\$318
CASH DOWN (includes freight of \$680 and air tax of \$100)	\$4,100
GAS TAX	\$75
PRE-DELIVERY INSPECTION	NO EXTRA CHARGE
PST/GST (incl. fee to be paid)	\$674
SECURITY DEPOSIT	\$375
TOTAL AMOUNT DUE ON DELIVERY	\$5,542

Licence, P.P.S.A. & Admin. Fees Extra
With \$0 down, monthly payment is \$443 (plus tax) - \$1,121 due on delivery.

SMARTLEASE **\$318** **PURCHASE PRICE \$25,398**

36 MONTHS (INCLUDES FREIGHT OF \$685 AND AIR TAX OF \$100. LICENCE, INSURANCE AND TAXES EXTRA.)

PRICE INCLUDES FREIGHT, AIR TAX & PDI.

Chevy Venture 2000

FEATURES:

- 3.4 Litre 185 HP V6 Engine
- 4-Speed Automatic Transmission • 4-Wheel Anti-Lock Braking System • Next Generation Driver and Front Passenger Air Bags • Remote Keyless Entry • Air Conditioning • Power Door Locks/Mirrors/Windows • Dual Sliding Doors
- 7-Passenger Seat Configuration • Tilt-Wheel™ and Cruise Control
- AM/FM Stereo with CD Player • PASS-Key™ III Theft-Deterrent System • Deep Tinted Glass



★★★★★ Five Star Safety Rating
Chevy Venture is the first vehicle ever to earn 5 stars (the top safety rating) for both driver and rear-seat passenger in side-impact testing. *Side-impact air bags are standard on Chevy Venture.

2000 CHEVROLET VENTURE NO SURPRISE LEASE GUIDE	
MONTHLY PAYMENT (36 month/60,000 km)	\$298
CASH DOWN (includes freight of \$95 and air tax of \$100)	\$4,820
GAS TAX	NOT APPLICABLE
PRE-DELIVERY INSPECTION	NO EXTRA CHARGE
PST/GST (incl. fee to be paid)	\$768
SECURITY DEPOSIT	\$350
TOTAL AMOUNT DUE ON DELIVERY	\$6,236

Licence, P.P.S.A. & Admin. Fees Extra
With \$0 down, monthly payment is \$441 (plus tax) - \$1,032 due on delivery.

SMARTLEASE **\$298** **3.9%** **PURCHASE PRICE \$28,588**

36 MONTHS FINANCE RATE UP TO 48 MONTHS. (INCLUDES FREIGHT OF \$895 AND AIR TAX OF \$100. LICENCE, INSURANCE AND TAXES EXTRA.)

PRICE INCLUDES FREIGHT, AIR TAX & PDI.

Chevrolet Malibu 2000



FEATURES:

- 3.1 Litre 170 HP V6 Engine • 4-Speed Automatic Transmission • 4-Wheel Anti-Lock Braking System • 166,000 km between tune-ups • Next Generation Driver and Front Passenger Air Bags • Air Conditioning • AM/FM Stereo with CD Player • PASSLock™ II Theft-Deterrent System • Tilt-Wheel™ Steering • Battery Run-Down Protection

2000 CHEVROLET MALIBU NO SURPRISE LEASE GUIDE	
MONTHLY PAYMENT (36 month/60,000 km)	\$268
CASH DOWN (includes freight of \$29 and air tax of \$100)	\$3,220
GAS TAX	\$75
PRE-DELIVERY INSPECTION	NO EXTRA CHARGE
PST/GST (incl. fee to be paid)	\$549
SECURITY DEPOSIT	\$325
TOTAL AMOUNT DUE ON DELIVERY	\$4,537

Licence, P.P.S.A. & Admin. Fees Extra
With \$0 down, monthly payment is \$369 (plus tax) - \$936 due on delivery.

SMARTLEASE **\$268** **4.9%** **PURCHASE PRICE \$22,298**

36 MONTHS FINANCE RATE UP TO 48 MONTHS. (INCLUDES FREIGHT OF \$370 AND AIR TAX OF \$100. LICENCE, INSURANCE AND TAXES EXTRA.)

PRICE INCLUDES FREIGHT, AIR TAX & PDI.

AUTO INSURANCE SAVINGS
FROM MOTORS INSURANCE CORPORATION - THE INSURANCE PEOPLE FROM GENERAL MOTORS.
VISIT YOUR CHEVROLET • OLDSMOBILE DEALER and call MIC for a fast, no obligation auto insurance quote.

For a limited time at your Chevrolet • Oldsmobile dealers.



We'd like you to know more: Come visit us at your local dealer, on our website at www.gmcanada.com or call us at 1-800-GM-DRIVE. All leases have annual kilometre limit of 20,000 km, \$0.12 per excess kilometre. PST, GST and insurance extra. All leases have an annual cost of borrowing of 1.9%/1.9%/6.9%/4.4%/5.9% per annum for Cavalier Sedan R17/Cavalier Coupe R17/Impala R17/Venture 4-Door R17/Malibu R17. Other lease options available. Financing on approved GMAC credit only. Example: \$10,000 at 1.9%/3.9%/4.9% APR; the monthly payment is \$216.52/\$225.34/\$229.84 for 48 months. Cost of borrowing is \$392.96/\$616.32/\$1,032.32. Down payment, trade and/or security deposit may be required. Monthly payment and cost of borrowing will vary depending on amount borrowed and down payment/trade. Offers apply as indicated to new 2000 models of Cavalier Sedan R17/Cavalier Coupe R17/Impala R17/Venture 4-Door R17/Malibu R17 equipped as described. Offers apply to qualified retail customers in the Ontario Chevrolet Oldsmobile Dealer Marketing Association only. Dealer order or trade may be necessary. Limited time offer which may not be combined with other offers. Dealers are free to set individual prices. See your dealer(s) for conditions or details. *Graduate rebate subject to program rules. *Car or light truck. **Test conducted by the National Highway Traffic Safety Administration (NHTSA). *Your GM Dealer is not licensed as an insurance broker, and is not acting as an agent or broker or in any other capacity on behalf of Motors Insurance Corporation. Available to residents of Ontario only.