

PERFORMANCE PREMIERE.

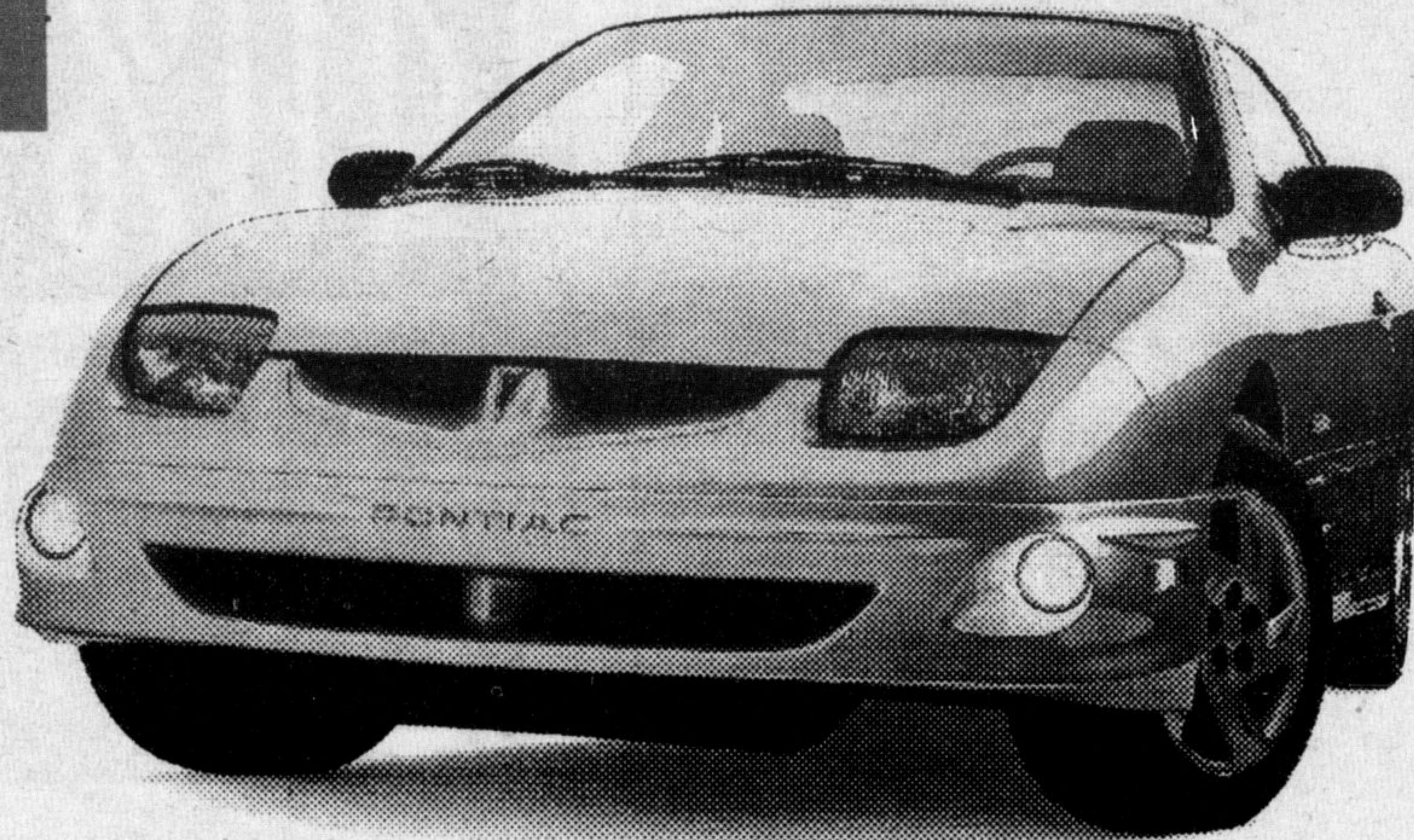
WE'RE UNVEILING OUR 2000 LINEUP.

2000 PONTIAC SUNFIRE COUPE

SUNFIRE 2000 VALUE PACKAGE

5-SPEED GETRAG TRANSMISSION

- 6-SPEAKER CD PLAYER
- Upgraded 15" Wheels • Anti-Lock Brake System • PASSLock® II Security System • 2.2 L 115 HP Engine
- Tinted Glass • Rear Spoiler



Add Air Conditioning OR Automatic Transmission for an additional \$15 a month on your SMARTLEASE Payment. OR get both for an additional \$30 a month.

PONTIAC SUNFIRE  BUILT FOR DRIVERS

LEASE OPTIONS

Down Payment	Lease Payment	Total Due On Signing
\$0	\$231	\$1,433.90
\$1,520	\$188	\$3,132.45
\$3,000	\$146	\$4,786.15

Total due on signing includes down payment, freight, security deposit, 1st month's payment plus taxes. Licence, insurance, P.P.S.A. and admin. fees extra.

SMARTLEASE

\$188*

per month/36 months/
\$1,520 down payment,
\$680 freight and \$300 security
deposit required

1.9%

Lease Rate up to 36 months or
Purchase Financing up to
48 months*

PURCHASE PRICE

\$16,158[†]

excludes freight \$680

2000 PONTIAC SUNFIRE SEDAN

SUNFIRE 2000 VALUE PACKAGE

REMOTE KEYLESS ENTRY – PLUS DUAL THEFT-DETERRENT SYSTEM

- Power Locks • Air Conditioning • 4-Speed Automatic with Traction Control • Anti-Lock Brake System • Cruise Control • AM/FM Cassette • 2.2 L 115 HP Engine
- Upgraded 15" Wheels • Rear Spoiler



PONTIAC SUNFIRE  BUILT FOR DRIVERS

LEASE OPTIONS

Down Payment	Lease Payment	Total Due On Signing
\$0	\$261	\$1,468.40
\$1,520	\$218	\$3,166.95
\$3,000	\$176	\$4,820.65

Total due on signing includes down payment, freight, security deposit, 1st month's payment plus taxes. Licence, insurance, P.P.S.A. and admin. fees extra.

SMARTLEASE

\$218*

per month/36 months/
\$1,520 down payment,
\$680 freight and \$300
security deposit required

PURCHASE PRICE

\$18,698[†]

excludes freight \$680

2000 PONTIAC GRAND AM

- 2.4 Litre Twin Cam 150 HP Engine
- 4-Speed Automatic Transmission with Enhanced Traction System
- 4-Wheel Anti-Lock Braking System
- 4-Wheel Independent Suspension
- Next Generation Driver and Front Passenger Air Bags • PASSLock® II Theft-Deterrent System • AM/FM Stereo Cassette • Power Door Locks • Air Conditioning
- Tilt-Wheel™ • Rear Spoiler



PONTIAC GRAND AM  BUILT FOR DRIVERS

LEASE OPTIONS

Down Payment	Lease Payment	Total Due On Signing
\$0	\$332	\$1,696.05
\$2,430	\$258	\$4,305.45
\$4,000	\$211	\$6,056.90

Total due on signing includes down payment, freight, security deposit, 1st month's payment plus taxes. Licence, insurance, P.P.S.A. and admin. fees extra.

SMARTLEASE

\$258*

per month/36 months/
\$2,430 down payment,
\$720 freight and \$300
security deposit required

FINANCE RATE

4.9%

Purchase Financing
up to 48 months*

PURCHASE PRICE

\$20,668[†]

excludes freight \$720

2000 PONTIAC GRAND PRIX GT

- 3.8 Litre Series II V6 200 HP Engine
- 4-Speed Automatic Transmission with Enhanced Traction System
- 4-Wheel Anti-Lock Braking System
- Next Generation Driver and Front Passenger Air Bags • PASS-Key® III Theft-Deterrent System • Wide Track Stance • Remote Keyless Entry
- AM/FM Stereo with CD • 16" Aluminum Wheels • Air Conditioning
- Rear Spoiler • Rear Seat Pass-Thru



PONTIAC GRAND PRIX  BUILT FOR DRIVERS

LEASE OPTIONS

Down Payment	Lease Payment	Total Due On Signing
\$0	\$400	\$1,981.50
\$2,700	\$318	\$4,892.20
\$5,000	\$249	\$7,382.85

Total due on signing includes down payment, freight, security deposit, 1st month's payment plus taxes. Licence, insurance, P.P.S.A. and admin. fees extra.

SMARTLEASE

\$318*

per month/36 months/
\$2,700 down payment,
\$635 freight and \$375
security deposit required

PURCHASE PRICE

\$26,858[†]

excludes freight \$635

2000 PONTIAC MONTANA

- 3.4 Litre V6 185 HP Engine • 4-Speed Automatic Transmission • 4-Wheel Anti-Lock Braking System • Next Generation Dual Front and Seat-Mounted Side Air Bags • PASS-Key® III Theft-Deterrent System • Power Windows/Door Locks • Dual Power/Heated Mirrors
- Dual Sliding Doors • Air Conditioning • AM/FM Stereo
- Deep Tint Glass • Tilt-Wheel™



PONTIAC MONTANA  BUILT FOR DRIVERS

LEASE OPTIONS

Down Payment	Lease Payment	Total Due On Signing
\$0	\$384	\$1,920.85
\$3,905	\$268	\$6,153.20
\$6,000	\$206	\$8,466.15

Total due on signing includes down payment, freight, security deposit, 1st month's payment plus taxes. Licence, insurance, P.P.S.A. and admin. fees extra.

SMARTLEASE

\$268*

per month/36 months/
\$3,905 down payment,
\$695 freight and \$325
security deposit required

FINANCE RATE

3.9%

Purchase Financing
up to 48 months*

PURCHASE PRICE

\$25,958[†]

excludes freight \$695

AUTO INSURANCE SAVINGS

FROM MOTORS INSURANCE CORPORATION – THE INSURANCE PEOPLE FROM GENERAL MOTORS.
VISIT YOUR PONTIAC•BUICK•GMC DEALER AND CALL MIC FOR A FAST, NO OBLIGATION AUTO INSURANCE QUOTE. ^Δ

FOR A LIMITED TIME. ONLY AT YOUR ONTARIO PONTIAC•BUICK•GMC DEALER

We'd like you to know more: Come visit us at your local dealer, on our website at www.gmcanada.com or call us at 1-800-GM-DRIVE. Offers based on Sunfire Coupe R7Z/Sunfire Sedan R7Z/Grand AM R7Z/Grand Prix GT R7Z/Montana SWB R7Z. Annual Cost of borrowing 1.9%/1.9%/5.9%/5.9%/4.4% per annum. Annual kilometre limit 20,000 km, \$0.12 per excess kilometre. Other lease options available. Freight (as indicated), licence, insurance, P.P.S.A., administration fees, and taxes not included. Dealers are free to set individual prices. Financing on approved GMAC credit only. Example: \$10,000 at 1.9%/3.9%/4.9% APR, the monthly payment is \$216.96/\$225.34/\$229.84 for 48 months. Cost of borrowing is \$392.96/\$816.32/\$1,032.32. Total obligation is \$10,392.96/\$10,816.32/\$11,032.32. Down payment and/or trade may be required. Monthly payment and cost of borrowing will vary depending on amount borrowed and down payment/trade. Offers apply as indicated to select 2000 new or demonstrator models, and to qualified retail customers in Ontario only (excluding Northwestern Ontario). Limited time offers which may not be combined with other offers. Dealer order or trade may be necessary. See your dealer(s) for conditions and details. ^ΔYour GM Dealer is not licensed as an insurance broker, and is not acting as an agent or broker or in any other capacity on behalf of Motors Insurance Corporation. Available to residents of Ontario only.

