

The Canadian Champion

139
SERVING MILTON FOR
YEARS

A Metroland Community Newspaper

Vol. 140 No. 62

Tuesday, October 19, 1999

40 Pages

\$1.00 (GST included)

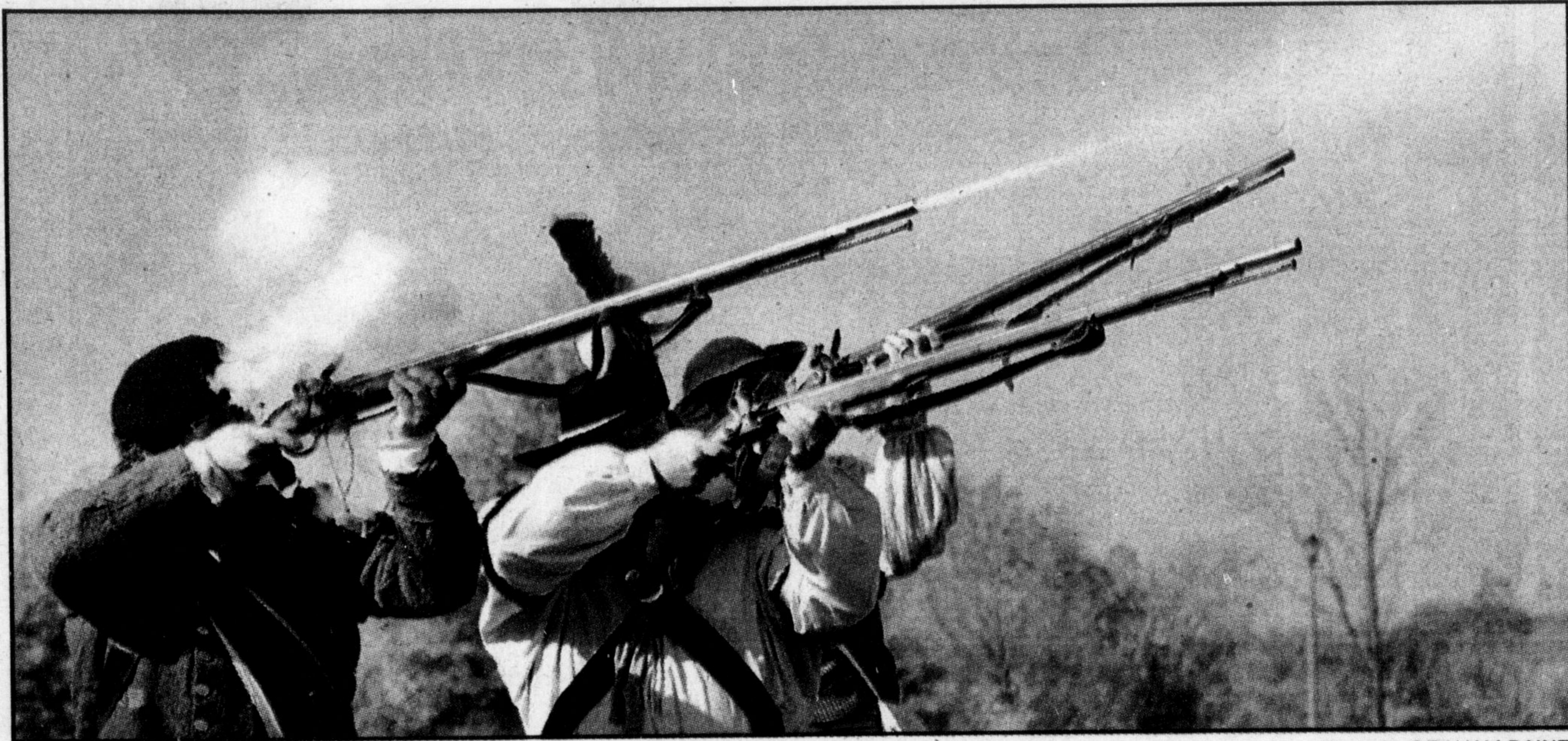


Photo by GRAHAM PAINE

Milton steps back in time

History buffs portraying British Loyalists fire their muskets during a War Of 1812 demonstration, which was part of this past weekend's first annual Global Genealogy Fair at the Milton Farm Museum. See more photos on page 13.

Astronaut Chris Hadfield hopes to pass along confidence with bursary

By IRENE GENTLE
The Champion

When you're used to space travel, flying from Texas to Milton probably doesn't seem like much of a journey.

So maybe it's no surprise that astronaut Colonel Chris Hadfield flew into town from Houston recently to personally congratulate the winner of the \$1,500 bursary that bears his name.

The award, the Chris Hadfield Educational Bursary, is aimed at helping others get their dreams off the ground.

It targets a Milton District (MD) High School graduating student who has excelled in the sciences, competitive sports and English.

The most recent award went to Ryan Kovacevich, who's now earning a mechanical engineering degree at the University of Waterloo.

Science and technology are the main interests of Mr. Kovacevich, who is also a pro-elite downhill bike racer.

He first met Col. Hadfield when the astronaut visited his former grade school Percy Merry, which Mr. Kovacevich was then



Photo by GRAHAM PAINE

Colonel Chris Hadfield (left) presents a mission patch to Milton District High School graduate and bursary winner Ryan Kovacevich.

attending.

Years later, he scooted down to Florida to watch Col. Hadfield's space launch.

Climbing over a fence to get a better view, the teen was drenched by a burning rain that fell in the aftermath of the shuttle launch.

"It was a cloud that went up and rained down," said Mr. Kovacevich.

It was no big deal, he insisted, but his mother, Janet Walters, begged to differ.

"It actually made holes in his jacket," she said.

With a retired pilot father and two pilot siblings, the Hadfield family have been flying high for years.

And helping others spread their wings through the bursary is a family effort.

Col. Hadfield's mother Eleanor came up with the idea, while father Roger devised the criteria for the award.

"It was set up to provide incentives for the kind of thing Chris has done," said Mr. Hadfield.

And Col. Hadfield proudly lent his name to it, coming all the way from his seven-year home in Texas to shake hands with Mr. Kovacevich.

"There is really no higher honour someone can have than to put their name on something like this," he said.

But the bursary's joint effort is typical of the Hadfields, said MD principal Barb Singleton.

"It is very much a family-oriented upbringing," she said. "I think we've all been fortunate to meet the Hadfield family."

Raised on a farm three miles south of downtown Milton, Col. Hadfield attended a number

• see HADFIELD on page 4

Council says no

Woodlots saved from developers

By IRENE GENTLE
The Champion

A dispute over two woodlots didn't hold up draft plan approvals for three new subdivisions at town council recently.

Controversy arose over 19 homes that developers Shipp Corporation Ltd. planned to back onto woodlots in the Thompson Road and Woodward Avenue and Woodward Avenue and James Snow Parkway area.

But the subdivisions will proceed without the contentious homes, council decided.

The proposed subdivisions will be located east of Milton's existing urban area.

They will be loosely bounded by Hwy. 401, Thompson Road, Derry Road and James Snow Parkway.

Despite many attempts, Town staff and the developers had been unable to come to an agreement on the issue, said Milton's planning director Mel Iovio.

"We have been negotiating for weeks on this," he said.

And while Shipp is agreeable to a slew of amendments, the 19 homes should be built, argued Glen

• see RESIDENTS on page 14

NEWSLINES

Impaired charges up

More motorists are buckling up for safety, but too many are still driving while intoxicated.

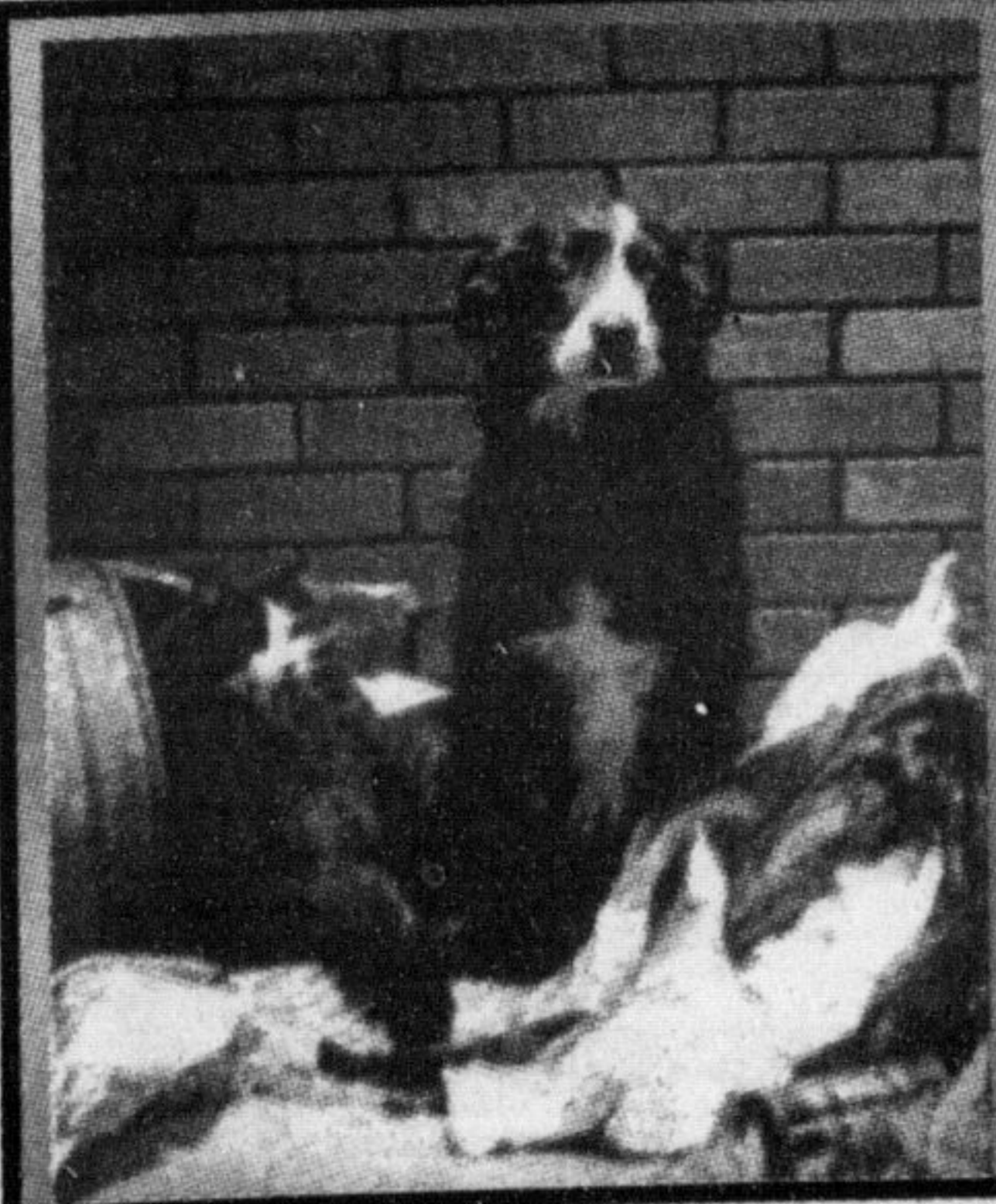
That is according to results of a recent 24-hour blitz by the OPP, which stopped 82,671 vehicles across the province on October 2 and laid 1,319 seat belt charges — far fewer than in 1998.

However, 50 impaired charges were also laid, which represents a significant increase from a year ago.

TUESDAY INSERTS

- Alexanian Carpet* • M&M Meats*
- Cashway* • Goodlets* • Fortinos*
- Business Depot* • White Rose*

*Selected areas only



TIP OF THE MONTH

Approximately 1 out of every 3 pets will be lost at least once in their life. Microchip identification is the most effective permanent method to identify lost pets. It may be the difference between lost and found.

DON'T WAIT UNTIL IT'S TOO LATE.

MAPLEWOOD VETERINARY HOSPITAL

"A TRADITION OF CARING & AFFORDABLE EXCELLENCE"

Full Medical and Surgical Care
24 Hour Emergency Service
House Calls / Pick-up and Delivery

Quality Pet Foods & Pet Store Supplies
Boarding and Grooming
Pet Daycare Available

Include this advertisement with your pet's appointment. Both you and your pet will appreciate it.

Serving
the Milton area
for 25 years

491 Main Street East, Milton (905) 878-8848