

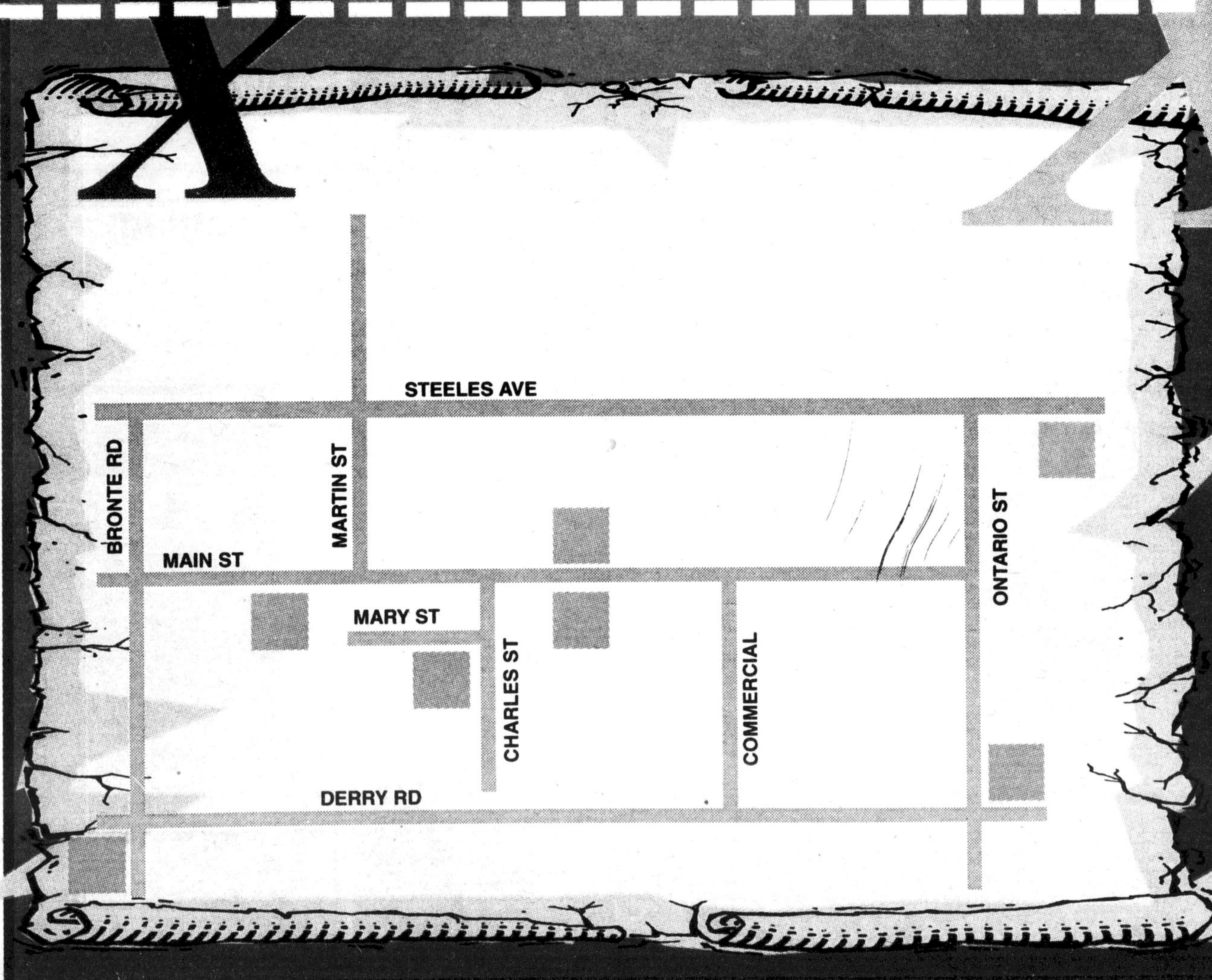
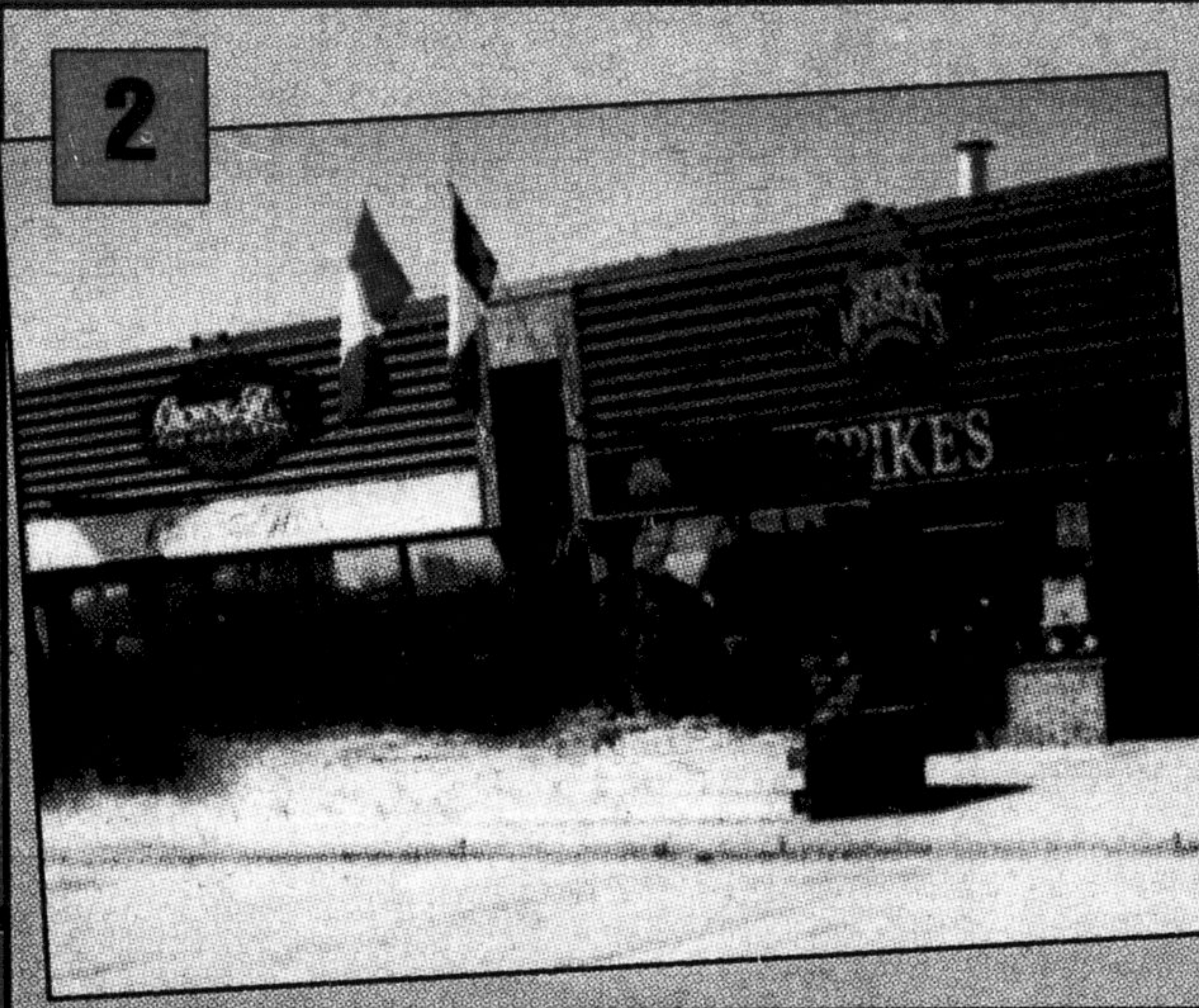
# Where Are They?

Correctly indicate where these Milton Businesses are located and you qualify to

# WIN!

### HOW TO PLAY

Correctly indicate on the map where the advertised businesses are located. If you correctly fill in the map your name will be entered in a draw. One name will be drawn and the winner will receive a \$100 Gift Certificate redeemable at one of these advertised businesses. Drop off the Ballot to the Canadian Champion office by Sunday, October 31, 1999.



**"Where Are They"**

NAME \_\_\_\_\_

ADDRESS \_\_\_\_\_

PHONE \_\_\_\_\_