

Crime Stoppers of Halton

Thieves crack open mailbox

Mail thieves have hit mailboxes in Milton, Acton, Georgetown and Oakville. Crime Stoppers wants you to help solve these thefts.

On September 27, a mailbox located at the corner of Woodward Avenue and Wilson Drive in Milton was found by a passerby to be damaged, and the mail had been stolen.

Canada Post employees work hard to get our mail to where it is going, but they can't do their job when thieves take it.

The post office reports that the mailbox has a locked middle panel that secures the mail. Suspects unknown used a sledgehammer to damage the lock and open the panel stealing the mail inside.

These suspects were probably looking for cash or cheques. Mailboxes in Acton, Georgetown and Oakville have also been hit over the last few weeks.

Crime Stoppers wants to remind citizens to never send cash through the mail system. If you know who is responsible for the mailbox damage and thefts, we are waiting for your call.

If you have any information that leads to an arrest in this or any other case, you may be eligible for a cash reward of up to \$1,000.

You need not give your name and your information can be taken with complete anonymity.

Call 1-800-222-TIPS or 825-TIPS.

Crash leads to impaired charges

A Byng Court man faces impaired driving charges following a car accident Sunday.

Around 6:30 p.m. the suspect was involved in a collision with another motorist at Court and Pine streets.

As a result, a 25-year-old man was arrested for allegedly driving while intoxicated and driving with over the legal limit of alcohol in his blood.

He will appear in Milton court November 15.

Drugs found

• Two Milton men were recently charged with producing marijuana in their Bousfield Drive backyard after police received an anonymous call. A search warrant was executed and 144 pot plants were found, each with a street value of \$700.

• A Milton teenager was charged with possession of a narcotic when 3 grams of marijuana were seized early Monday.

Police were called to Millside Drive shortly after midnight, following a report that some youths were discarding a bicycle in the creek. They later found the drug and arrested a 16-year-old.

Major heist

Construction equipment valued at \$5,000 was stolen from a pick-up truck on Amos Drive September 30.

The big ticket item removed during the evening theft was a O'Megco compressor.

Police Blotter

Cookie caper

A 1998 GMC Sierra pick-up truck was recovered at Milton Heights Campground Monday, nearly a year after it was initially reported stolen from Mississauga's Square One.

The truck and trailer — which at the time of the theft was filled with \$13,000 worth of Voortman Cookies — belonged to a Burlington man.

The vehicle was dumped by two male

suspects at the Townline Road camp ground for storage in 1998.

Camp site operators finally called police when they realized the men weren't coming back for the vehicle.

Police are investigating.

Joy ride

A car was stolen from Petro Canada on Steeles Avenue at 4:23 a.m. Saturday, and recovered a short time later on Highway 25.

The owner had left the vehicle running while he went into the gas station to purchase a beverage.

Hemlock Junction Railroad

Model Trains HO - N - G



Incredible Selection of Jigsaw Puzzles

Hobby Supplies

- glue
- paints
- airbrushes

Thomas the Tank: diecast, electric, puzzles

150 Mill St. Milton 905-875-4735



Check out

Arts Milton & The Rotary Club of Milton's

CELEBRATION
of the ARTS this weekend

NISSAN'S
"come in
for a spin"
sales event



Nissan sales are rockin'
and the 2000 models are
rarin' to roll



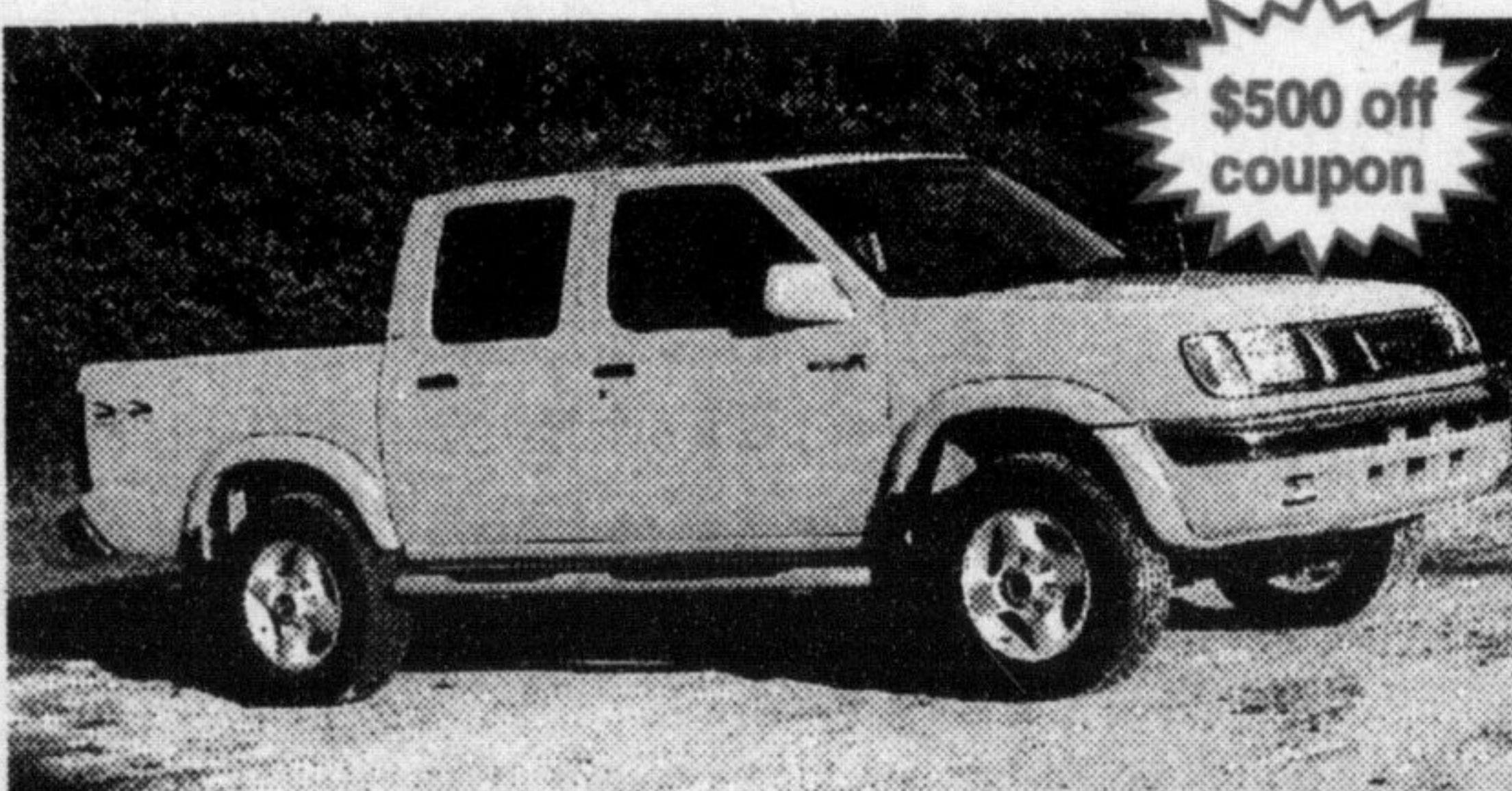
2000 MAXIMA GXE

\$3,000 Downpayment \$398/month 48 months

- 222-Hp 3.0-litre V6 engine
- Automatic transmission
- Power windows, door locks and mirrors
- 120-watt premium AM/FM/CD with cassette audio system with 6 speakers
- Anti-theft system
- Remote keyless entry with vehicle immobilizer system
- Automatic climate-control a/c



2000 FRONTIER CREW CAB



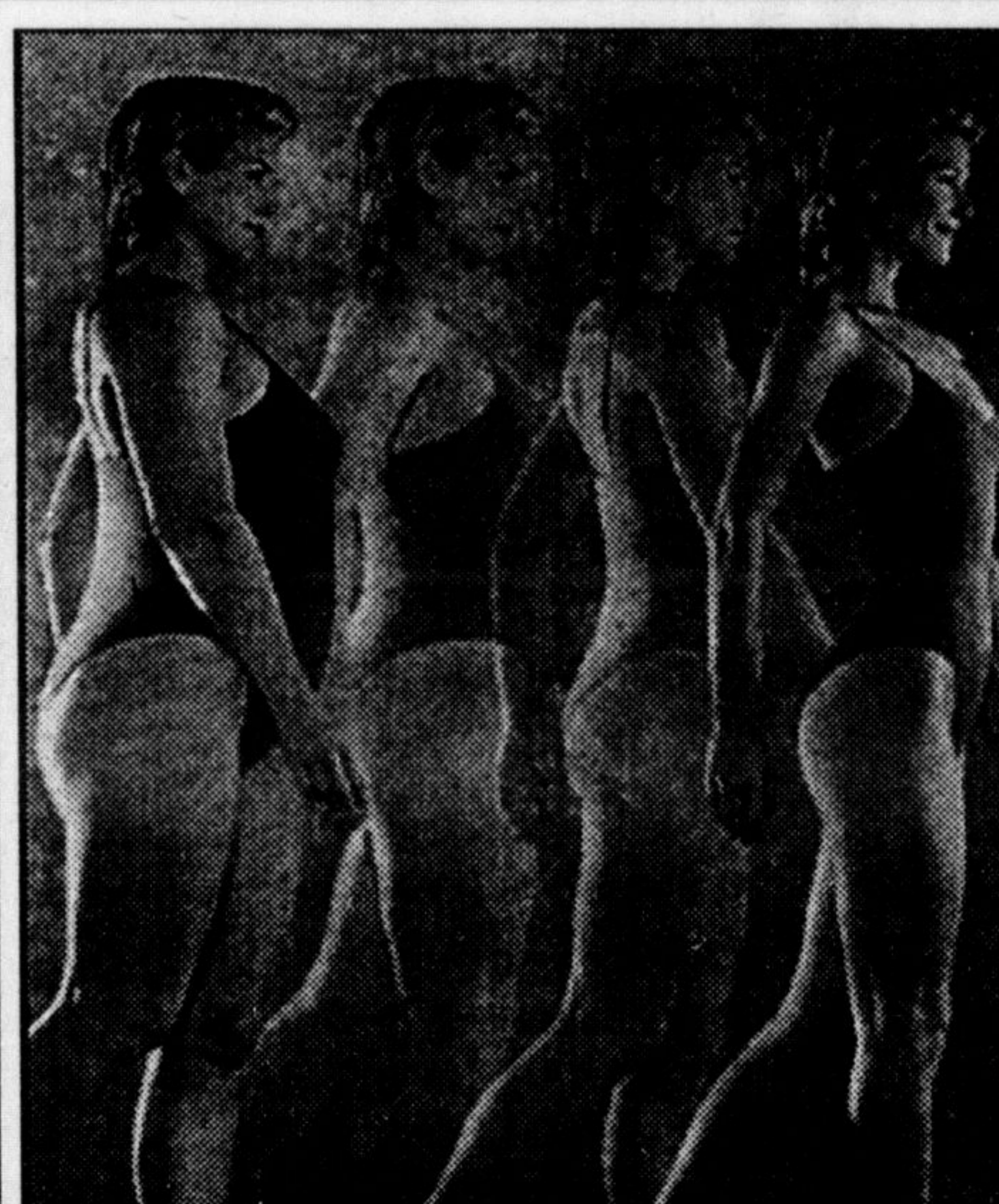
\$500 off coupon

Starting at only \$24,998*

- Front buckets & rear bench seat = room for 5
- 170-HP 3.3 litre V6 engine • Air conditioning
- AM/FM with cassette audio system
- Alloy wheel and 4-wheel ABS
- Black privacy glass and more . . .
- Aluminum bed extender available

NORTH END NISSAN 878-4137
610 MARTIN ST. MILTON

See dealer for special financing, terms and lease packages, freight & taxes extra, O.A.C. Limited time offer.



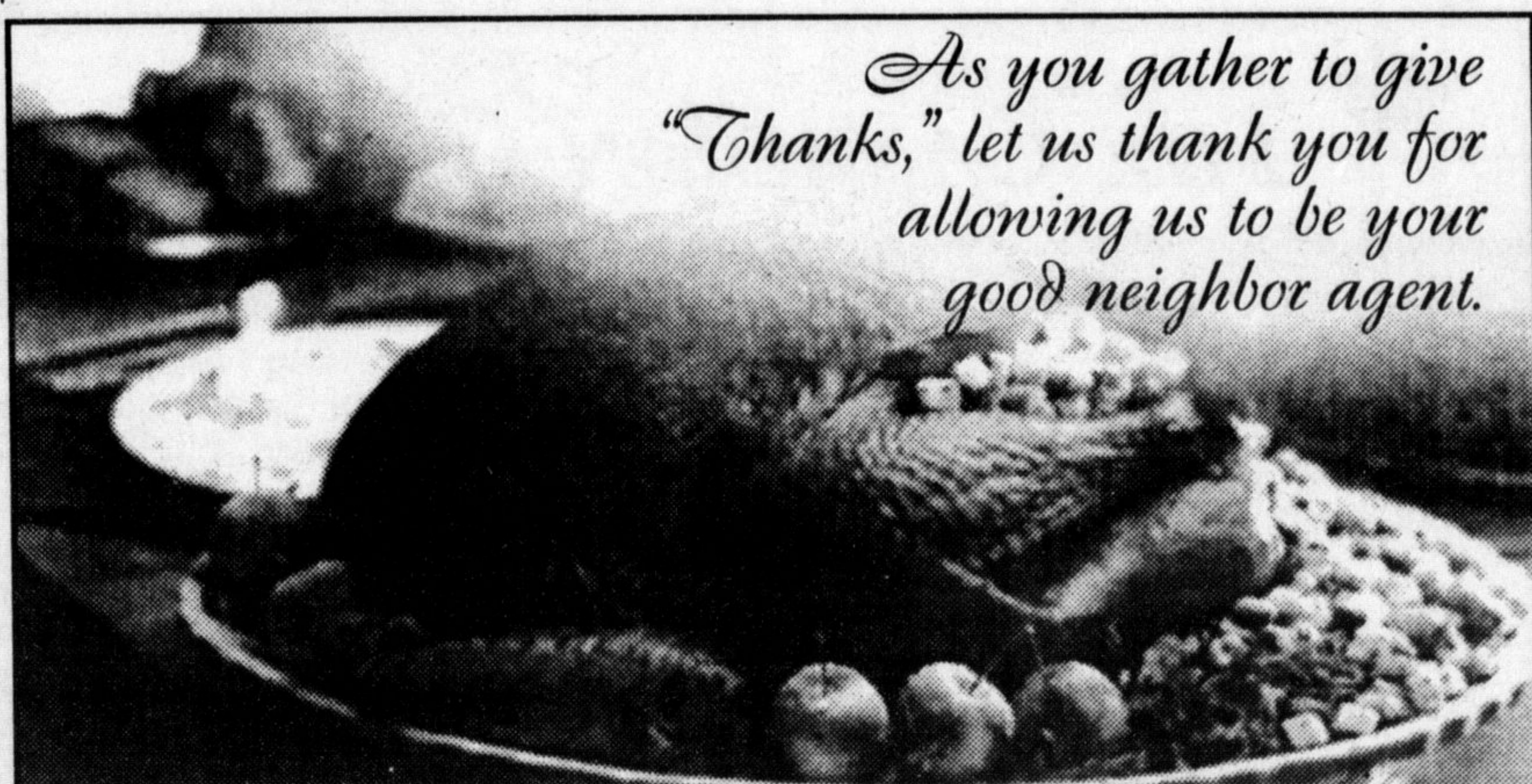
Now You Can Have The Body You Want:

- WITHOUT DRUGS
- WITHOUT SIDE EFFECTS
- WITHOUT CRAVINGS OR HUNGER
- WITH THE MOST POWERFUL ALL-NATURAL WEIGHT-LOSS INGREDIENTS AVAILABLE

Easy, Quick, Safe Approach To Weight-Loss Finally Discovered!

Finally, after years of research, leading doctors, researchers & biochemists have developed an all-natural product that burns fat while you sleep

888-301-3243



As you gather to give
"Thanks," let us thank you for
allowing us to be your
good neighbor agent.



Don MacRae
878-8109



Anita Cutaia
878-8871



485 Main St. E.
Milton, Ontario L9T 1R1

Like a good neighbor, State Farm is there.®

STATE FARM MUTUAL AUTOMOBILE INSURANCE COMPANY • CANADIAN HEAD OFFICE, SCARBOROUGH, ONTARIO