



OUR READERS WRITE

THE CANADIAN CHAMPION

Former trucker ashamed of today's drivers

Dear Editor:

Last Monday, I came back from Gravenhurst. I didn't use the four-lane Hwy. 11 or Hwy. 400 anymore than necessary. I used back roads. Why? Because the highways were

clogged with autos, not big rigs.

One Wednesday my wife and I drove to Niagara Falls and back. I was shocked, appalled and ashamed about how our so-called professional drivers behaved.

Why when so much of our gas price is tax do we not have protection from these nuts? Why do these rigs not have

governors when I have no where to go and one of these irresponsible idiots is quickly coming behind me.

I have to go 130 km/h to escape with my life. Something is very, very wrong. It's now easy for me to see what went wrong Friday, September 3 on Hwy. 401 east of Windsor.

I started driving heavy trucks at age 17. I'm proud to say I

drove for 45 years with no accidents. I did go to three driving schools at 15 years of age. I failed three times and was told by my instructor that I would never drive.

I'm been retired for four years and was always very proud of my co-drivers, but now I'm ashamed.

Ken Bryant
Milton

Milton Hydro's fate is under review, says chairperson

(The following letter was sent to resident Anthony Green and a copy was filed with The Champion.)

Dear Editor:

Thank you for your letter of August 17. On behalf of the Commission, we appreciate your concerns with respect to selling Milton Hydro and wanted to update you on our work with the Town of Milton in this regard.

Under the Energy Competition Act (1998), a number of changes have been mandated for Milton Hydro. The utility (the distribution business) must be incorporated under the Ontario Business Corporations Act by November 7, 2000. At the time the competitive market opens, which is likely to be sometime in late 2000, customers will be able to choose the company from which they buy their electricity. Milton Hydro will continue to

deliver/distribute electricity.

The Town of Milton, having been confirmed as the sole shareholder of Milton Hydro, must decide whether to retain and operate Milton Hydro or sell the utility. To assist in making this decision, the Town established the Transition Steering Committee in January, 1999 "to consider the future direction of the municipal electric utility in relation to the requirements of Bill 35."

The committee is comprised of Hydro Chair Sharon Barkley, Mayor Gord Krantz, Town/Regional Councillor Richard Malboeuf, Hydro Commissioner Bill Rowney, Town Chief Administrative Officer Mario Belvedere, Hydro General Manager Don Thorne, Town Treasurer Jim McQueen, and Hydro Finance and Administration

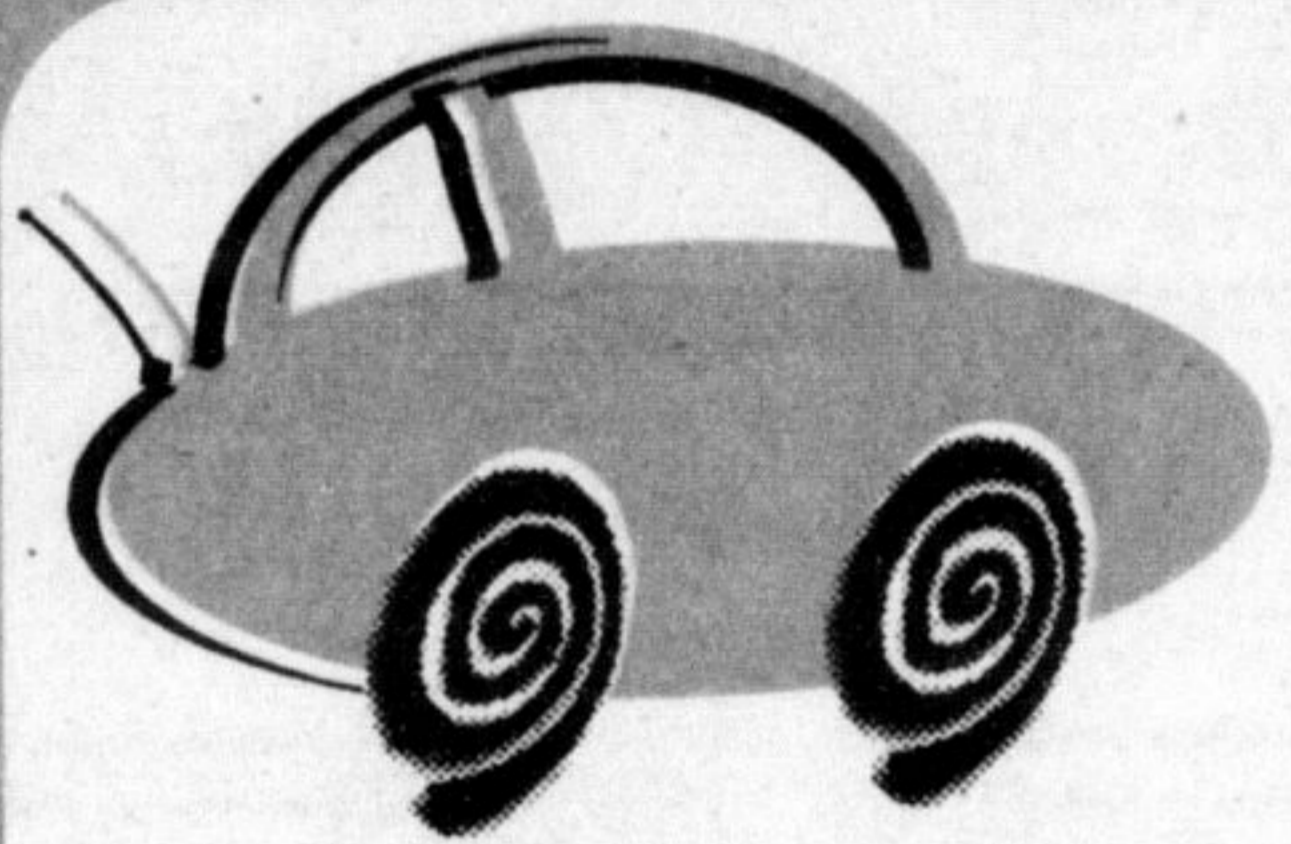
Officer Mary-Jo Corkum.

The committee retained Deloitte and Touche to assist them in responding to the opportunities and challenges of the Energy Competition Act.

To date, the committee has held a number of meetings to review the options. On June 7, 1999, the committee made a preliminary presentation to town council to outline the business issues that it would have to ultimately decide upon the options available.

The committee will present their draft report to council on September 20. This report will outline the analysis of the available options and make recommendations to council. I encourage you to attend the meeting.

Sharon Barkley
Milton Hydro-Electric
Commission



Nissan sales are rockin' and the restyled 2000 Altima is rollin' over the competition.

2000 Altima GXE Thinking Camry, Accord or Malibu? Think about these Altima advantages

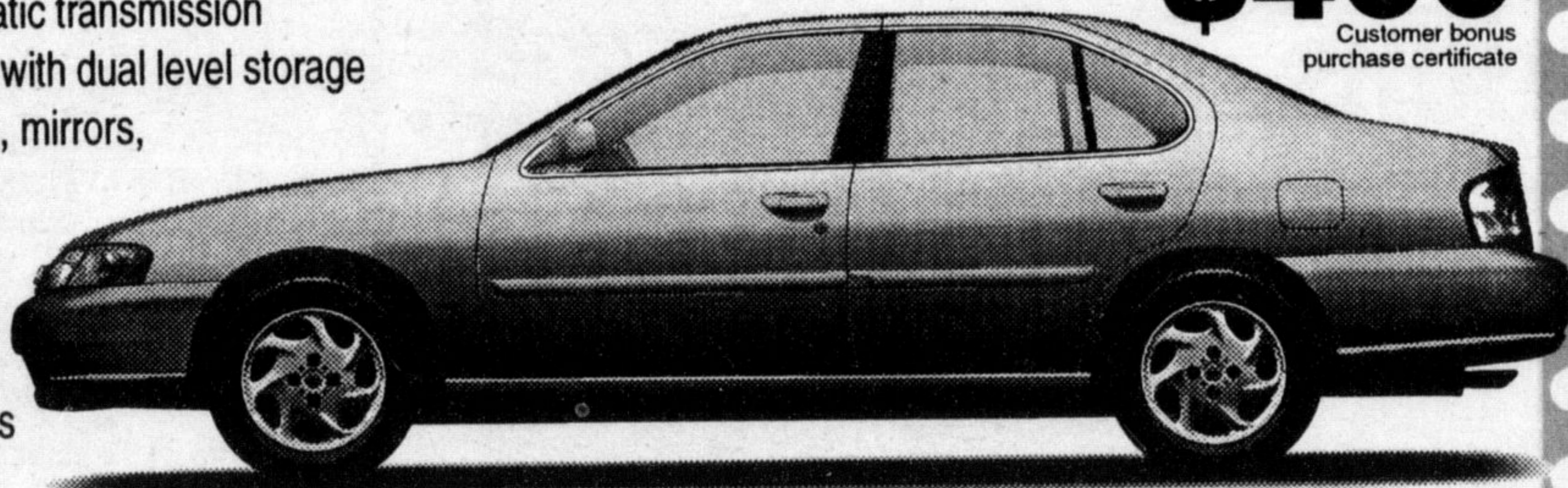
\$298/mo.†/48/mo. Only \$1500 down or \$23,798 purchase price

"Best Entry Midsize Car in Initial Quality 3 out of the Last 4 Years" - J.D. Power And Associates

- A 155-HP 2.4 litre engine - that's bigger and more powerful than Camry and Accord 4-Cylinder models
- More front and rear head room than Camry
- Wood-toned trim standard
- 100-watt AM/FM/CD audio system
- 4-speed automatic transmission
- Centre console with dual level storage
- Power windows, mirrors, door locks and trunk release
- Air conditioning
- Cruise control
- Remote Keyless entry system with panic alarm
- 8-way adjustable driver's seat
- Vehicle immobilizer key system
- Dual illuminated vanity mirrors
- 60/40 split fold-down rear seat
- And more...

SEPTEMBER bonus

\$400
Customer bonus purchase certificate



Lease rate starting from **5.8%**



NORTH END NISSAN
610 MARTIN ST. MILTON 878-4137

*FRT., PDI, LIC. EXTRA. Financing available OAC. Special lease packages on request. See dealer for details.

The Canadian Champion welcomes letters to the editor. Mail letters to: The Canadian Champion, Box 248, Milton, Ont., L9T 4N9, fax them to 878-4943 or leave them at our office, 191 Main St. E.

GIC Rates Available through



5.35%
5.75%
6.05%

Rates subject to change

Mortgage Rates Available through



1 yr. 6.05%
3 yrs. 6.65%
5 yrs. 6.80%

Daily Interest Savings Account 4.25% no minimum, no fee.

Abbey Plaza, Oakville
(3rd Line at Upper Middle Rd.)

905-827-8009

WHY ARE 37 MILLION CARS INSURED WITH STATE FARM?



JUST ASK A GOOD NEIGHBOR.

Don't trust just anyone to insure your car, see us:



Don MacRae
878-8109



485 Main St. E.
Milton, Ontario L9T 1R1



Anita Cutaia
878-8871

Like a good neighbor, State Farm is there.®

STATE FARM MUTUAL AUTOMOBILE INSURANCE COMPANY • CANADIAN HEAD OFFICE: SCARBOROUGH, ONTARIO

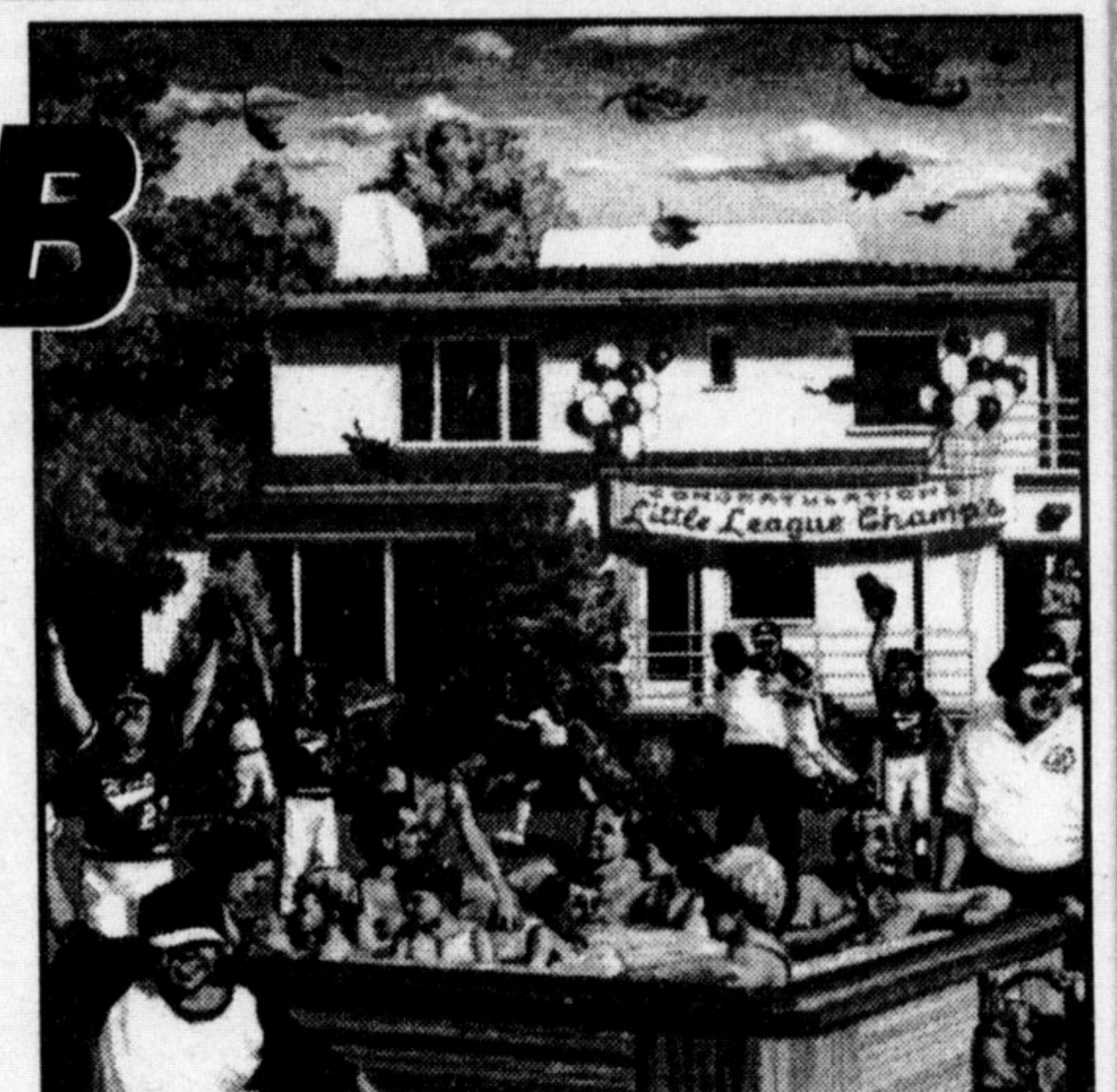
POOLS • HOT TUBS • PATIO FURNITURE • POOLS • HOT TUBS • PATIO FURNITURE

Fabulous Fall HOT TUB event!

Purchase Beachcomber's most popular Option Package

POWERSMART INCLUDES

- PROTEC CONSTRUCTION PACKAGE makes the Hot Tub very energy efficient - has a mean average operating cost of about \$15⁰⁰ per month.
- POWER SMART COVER - extra thick and extra efficient - Powersmart endorsed
- LIFT'N'STORE - removes Powersmart cover with ease
- HOLIDAY TENDER - conveniently dispenses chemicals automatically.



"As seen on TV, Powersmart is recommended by Beachcomber founder Keith Scott and Home Checks Shell Busey for an efficient hot tub!"

Value \$1000 **NOW ONLY \$780⁰⁰** BEACHCOMBER Hot Tubs & Spas SINCE 1978

BONUS! FREE CHEMICAL KIT (Value \$200)

Plus...No Payments and No Interest UNTIL FEBRUARY 2000!

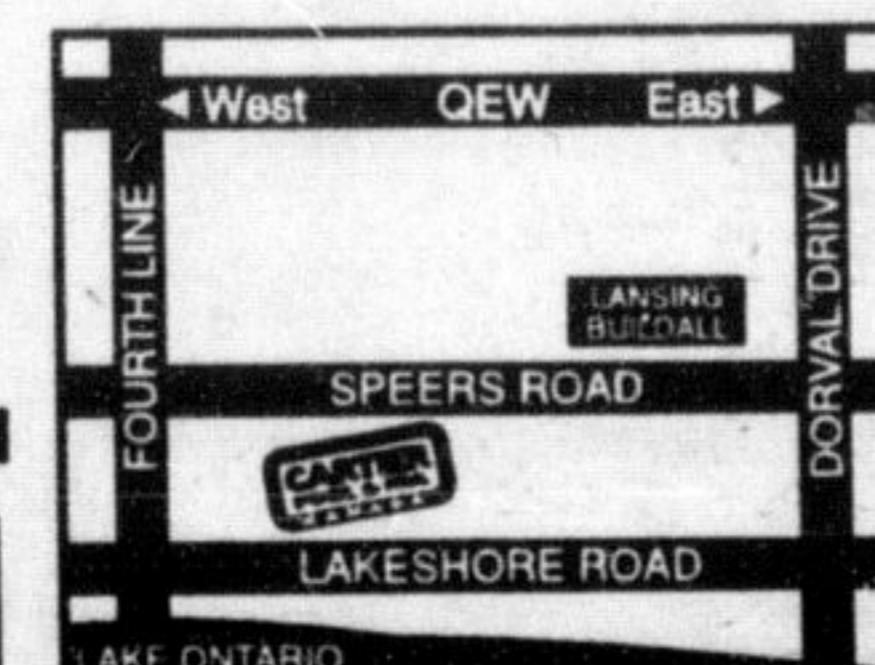
We'll beat any competitor's price by 5%*

Voted Best Pool & Spa Company



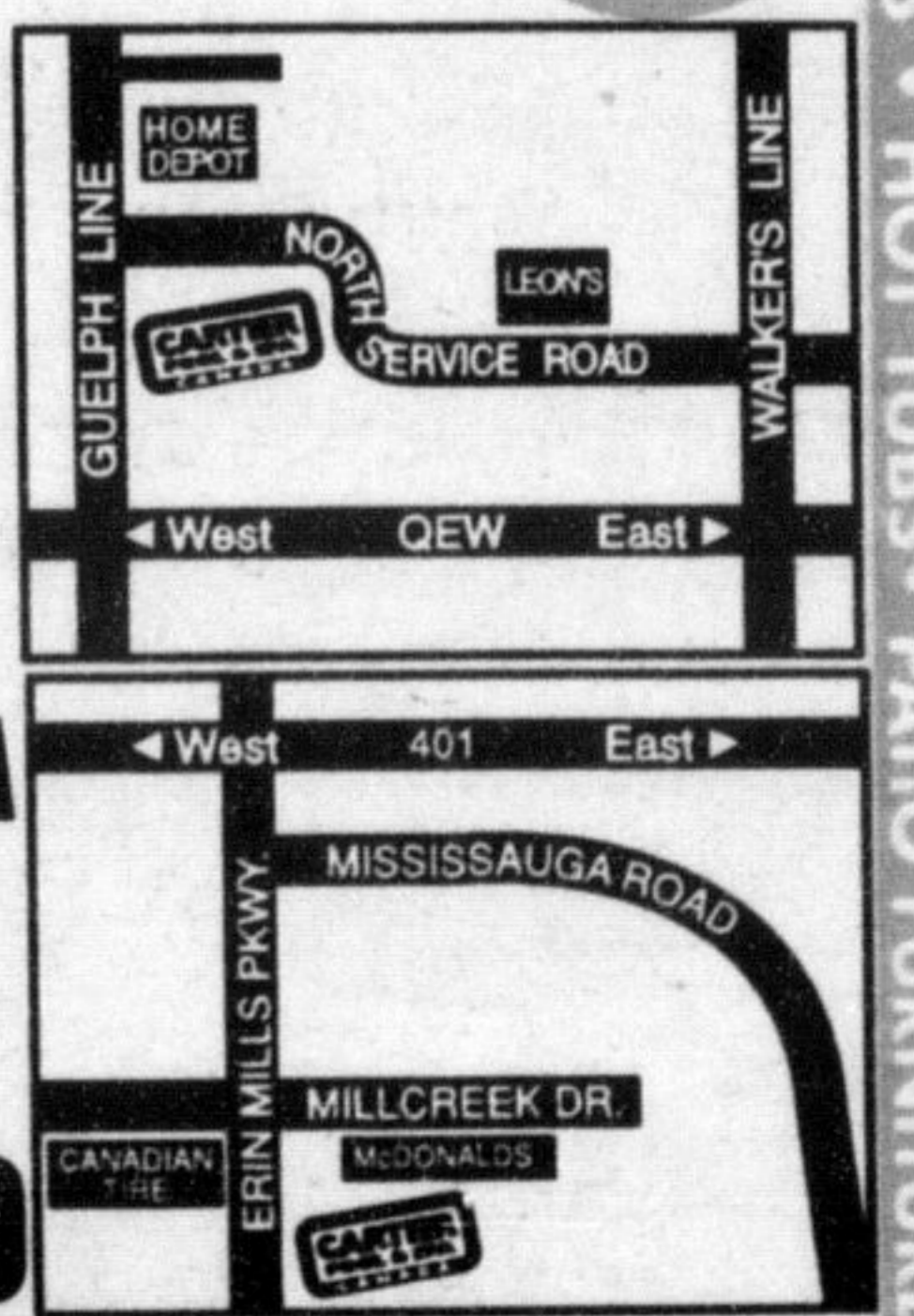
Mon-Wed 10am-6pm, Thurs & Fri 10am-8pm, Sat 9am-6pm, Sun 11am-5pm

OAKVILLE SHOWROOM
510 Speers Rd.
between 4th Line & Dorval
847-8551



BURLINGTON SHOWROOM
3073 North Service Rd
at Guelph Line
336-7424
www.cartiercanada.com

MISSISSAUGA SHOWROOM
8400 Millcreek Drive
at Erin Mills Pkwy.
812-5390



POOLS • HOT TUBS • PATIO FURNITURE • POOLS • HOT TUBS • PATIO FURNITURE