

Dateline

Notices for Dateline should be handed in at the office of The Champion, 191 Main St. E., mailed to P.O. Box 248, Milton, Ont., L9T 4N9, or faxed to (905) 878-4943. The final deadline is noon Friday for Tuesday's edition and noon Wednesday for Friday's edition. Dateline items will not be accepted by telephone.

Tuesday June 8

A free **men's group on how to handle stress** meets at the Harrop Cottage on Steeles Avenue at 7 p.m. For more information, call 878-8161, ext. 1.

The senior citizens' **Lunch Bunch** holds its monthly get-together at a local eatery at noon. The event features fun, fellowship and the latest news. Call the Milton Seniors' Activity Centre at 875-1481 for the June location.

Wednesday June 9

The Milton Seniors Activity Centre, 500 Childs Dr., holds its **Evening Euchre Party** at 7:30 p.m. The event features socializing and lively competition. Prizes are awarded to winners. Admission costs \$2.

Thursday June 10

The Schizophrenia Society of Ontario holds its **Support Group Program** on the second Thursday of each month at Port Nelson United Church, 3132 South Dr. in Burlington at 7 p.m. Appointments are not required. For additional information, call 634-6797.

The Milton Seniors' Activity Centre hosts a bus trip to Fergus for **'Theatre on the Grand'**. Participants shop and have lunch in Elora and then go to Fergus to see British farce 'Who's Under Where'. Call 875-1681 to sign up.

The Oakville, Milton and District Real Estate Board holds its annual **golf tournament and dinner** in support of Joyce Scott Non-Profit Homes Inc. at Richview Golf and Country Club. The green fee is

\$40 and dinner tickets cost \$32. Tee-off times start at 8:30 a.m. For more information, contact Maria Sewell at 875-2679.

Friday June 11

Tourism Milton invites the business community and the community at large to **'Lunch in the Park'**. Tourism Milton (a division of the Milton Community Resource Centre) holds its second community barbecue from 11:30 to 1:30 p.m. at Chris Hadfield Park (behind the old OPP station). The event features the Song Spinners Chorus as Milton-area artists from the Fine Arts Society of Milton sketching on the site. Hamburgers and sausages are on the menu.

Saturday June 12

The **Campbellville Working From Home Club** holds a picnic and canoeing event on the Grand River. New members are welcome. For more information, call 854-2475.

Grace Anglican Church on Main Street hosts the **Shingle Shuffle** in the church parking lot from 5 to 8 p.m. The event is a celebration of the new slate roof.

The Canadian Hearing Society holds a **fundraising garage sale** from 8 a.m. to noon at 1522 Warland Rd. in Oakville. For sale is furniture, old computers, books and much more. The organization runs programs and services for deaf, deafened and hard of hearing people.

The **Milton Historic Homes Tour** from 10 a.m. to 5 p.m. features six restored 19th century residences plus the Waldie Blacksmith Shop and guides in period costume. Proceeds go to the ongoing Waldie Blacksmith Shop restoration by the Milton Historical Society. Tickets cost \$15. Call 876-1872 (Helen) or 878-4197 (Mandy), or purchase tickets from several Milton retailers displaying posters.

Sunday June 13

Nassagaweya Presbyterian Church holds its

anniversary service at 11 a.m. The guest minister is Rev. Stephen Farris from Knox College. A light lunch follows. All are welcome to attend.

The Ebenezer Cemetery Board invites the community to join in the **bi-annual memorial service** for the community cemetery, which was founded in 1831. The 3 p.m. service takes place in the sanctuary of Ebenezer United Church on Guelph Line, north of No. 20 Sideroad. Fellowship and lunch follow. For more information, call Eli Daigle at 854-2628.

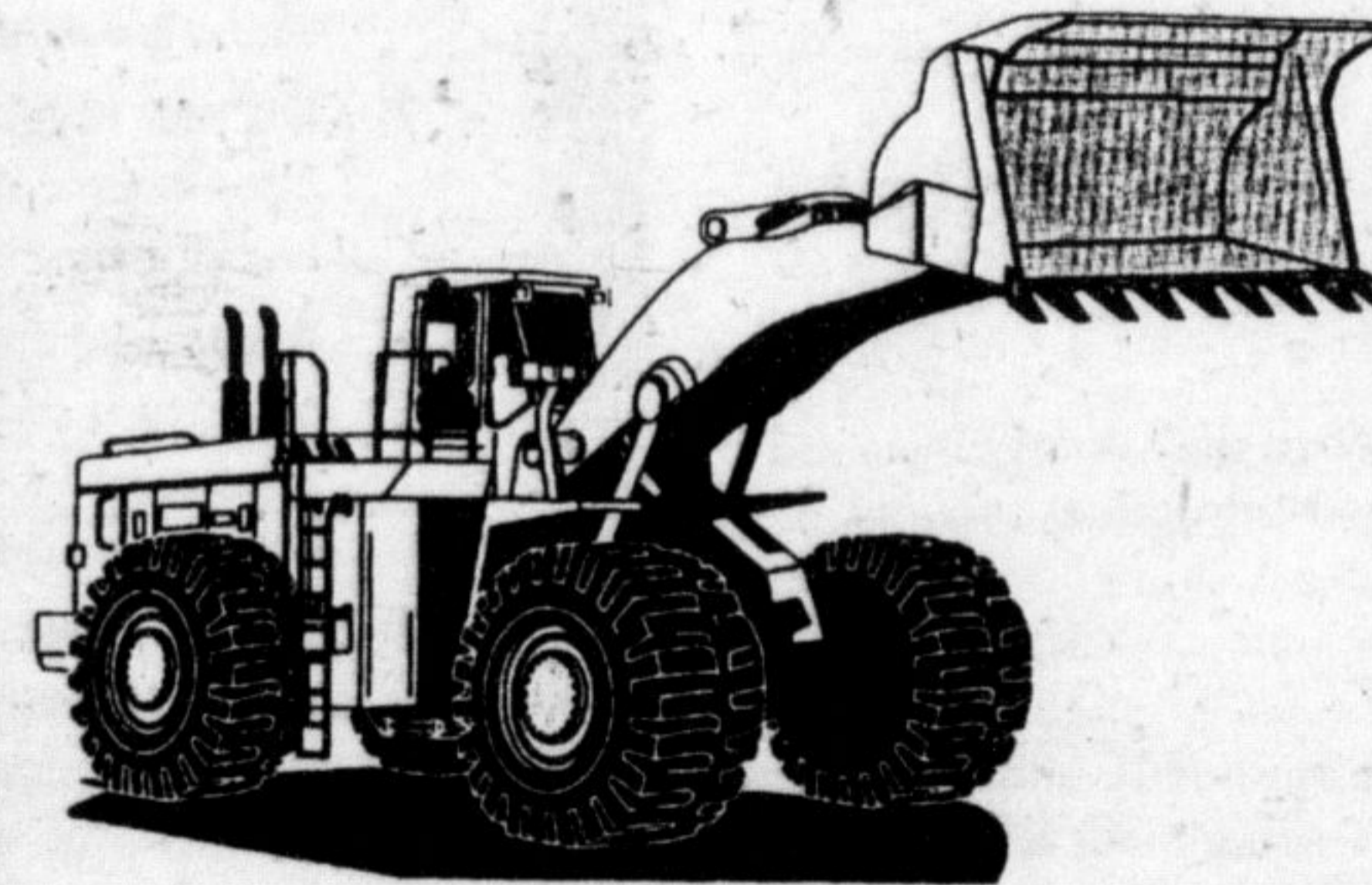
Hope Place's **Hike for Recovery '99** — featuring 4 and 6 km family walks — starts from Southview Plaza (Ontario Street and Derry Road). Registration takes place from 10 to 11 a.m. A barbecue follows the hike at the Milton treatment centre. The entry fee is \$5 for adults. Children participate for free. For more information, call 875-3214.

Got a hot scoop? We'd love to hear your story idea. Call 878-2341 on weekdays and ask for the news-room.

Blue Circle MATERIALS

BLOCK DIVISION
R.R. 3, #5 Side Road
Milton, Ontario L9T 2X7

Located on 5th Side Road (Campbellville Road) East of Hwy #25 on the north side. Blue Circle Materials (Formerly TCG Materials Limited) is now delighted to offer the general public the following aggregate products available F.O.B. our Milton Yard:



- Brick Sand
- Concrete Sand
- 3/4 (20 mm) Clear Crushed Stone
- Fine & Coarse Screenings

Also suppliers of Concrete Block and Masonry Bag Cements. Please call our dispatch office to place your order: (905) 875-3690, 1-800-668-4805.



Every 7 minutes someone dies of heart disease and stroke.

Please give.

Thanks.

1999 Media Sponsor
1050 chum
The Oldies Station!

CLASSICS

AGAINST CANCER

12th Annual Show - Father's Day - Sunday, June 20, 1999

Antique, Classic, & Modified Car and Truck Show
Cedarvale Park, Georgetown, Ontario

- | | |
|---------------------|--|
| 7:30 AM | Gates open to the public and exhibitors |
| 8:00 AM to 10:30 AM | Complimentary Pancake breakfast for all exhibitors |
| 8:30 AM to 10:30 AM | Pancake breakfast with sausages available at old-fashioned prices! |
| 11:00 AM to 2:30 PM | Lunch available - good old-fashioned 'Drive-In' food |
| 10:00 AM to 3:00 PM | Children's corner - 'car' colouring, face painting, balloons and more. |
| | Remote control car racing, entertainment, featuring a variety of entertainers. |
| 3:00 PM | Awards presented to the best cars in the show. |

For the latest information, see our web site at <http://www.classicsagaincancer.on.ca>

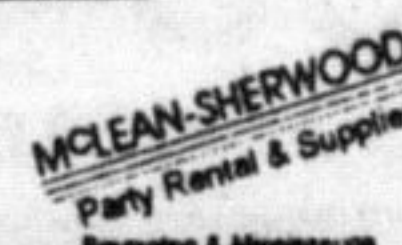
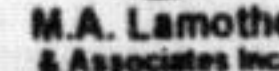
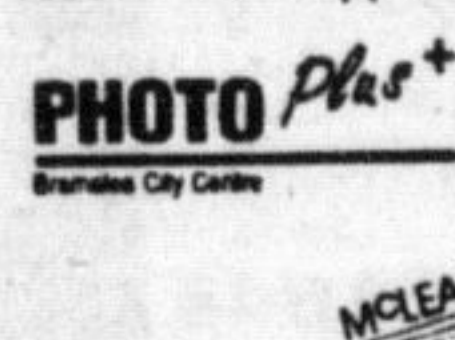
The best deal in town, just \$6.00 per person! Children 12 and under are free when accompanied by an adult.

Come early and enjoy a great Pancake Breakfast, look at all the old vehicles and enjoy the entertainment!

Request for entry forms: Classics Against Cancer, 10 Oak Ridge Drive, Georgetown, ON L7G 5G6. Phone 905-877-7239 for more information. Advance entries received to June 15th, after June 15th, register at the show.

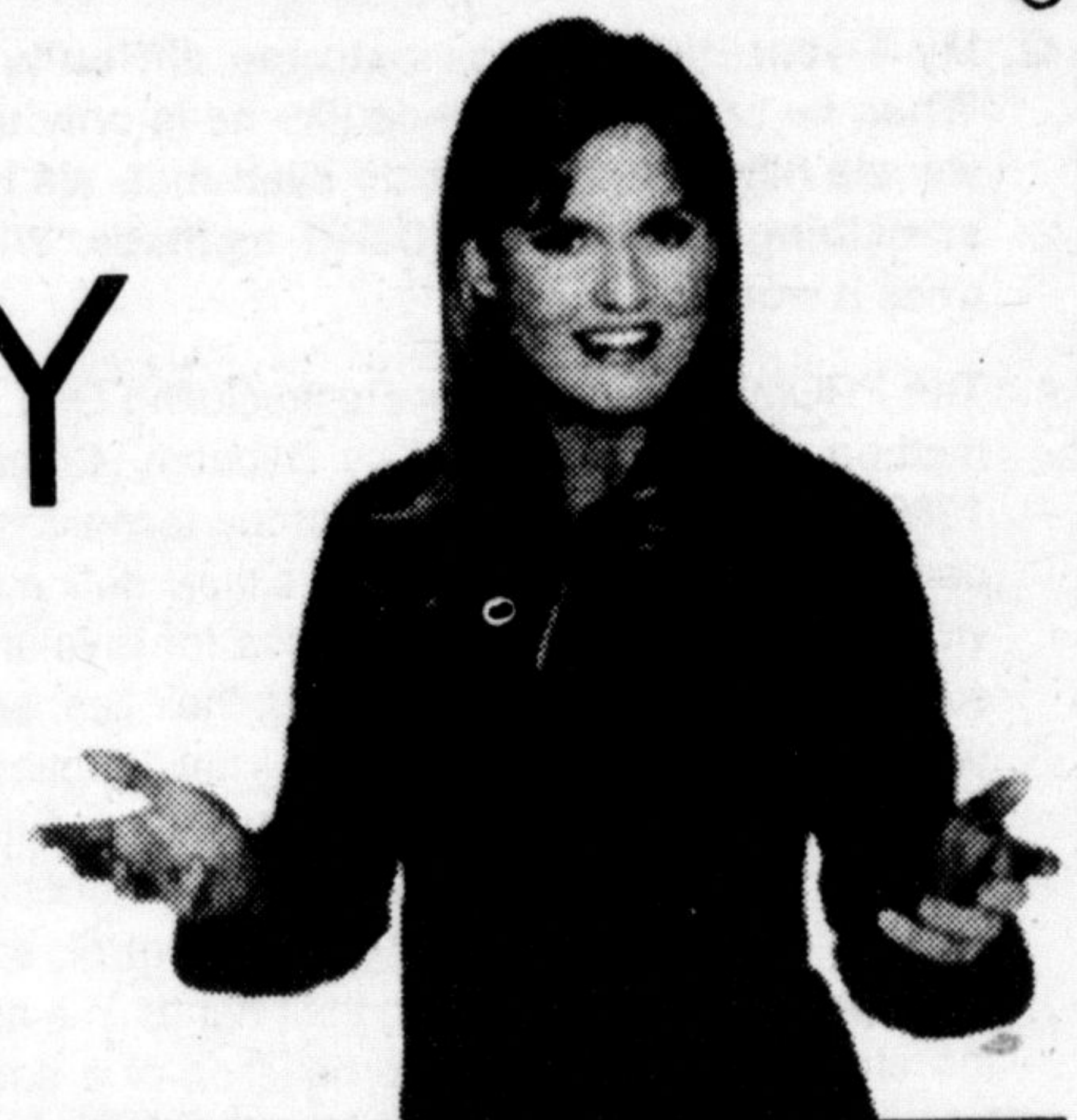
Open to any road or race vehicle built in 1978 or earlier. Show entry is \$25 per vehicle which includes judging, awards, photo, goodie bag, and breakfast! Registration opens at 7:30 AM and closes at 11:00 AM.

All proceeds to



JOIN Weight Watchers®

for
ONLY \$25!



between
June 7 - 26, 1999

Earn a **FREE** Cookbook OR Meeting!

Georgetown - Tuesdays
Milton - Wednesdays
Acton - Thursdays

For More Information Please Call Alice at
1 800 387-8227

Offer valid in franchise #118, Georgetown, Milton and Acton locations only, until June 26, 1999. Not to be combined with any other offer.

Day at the SPA

No One
ESTHETICS & HAIR SALON

FATHER'S DAY

Manicure, pedicure, facial, back massage, deep conditioning scalp treatment with finished style

Reg \$195
Now \$159

84 Main St. E.
876-3761

Call for other packages