

# SPORTS

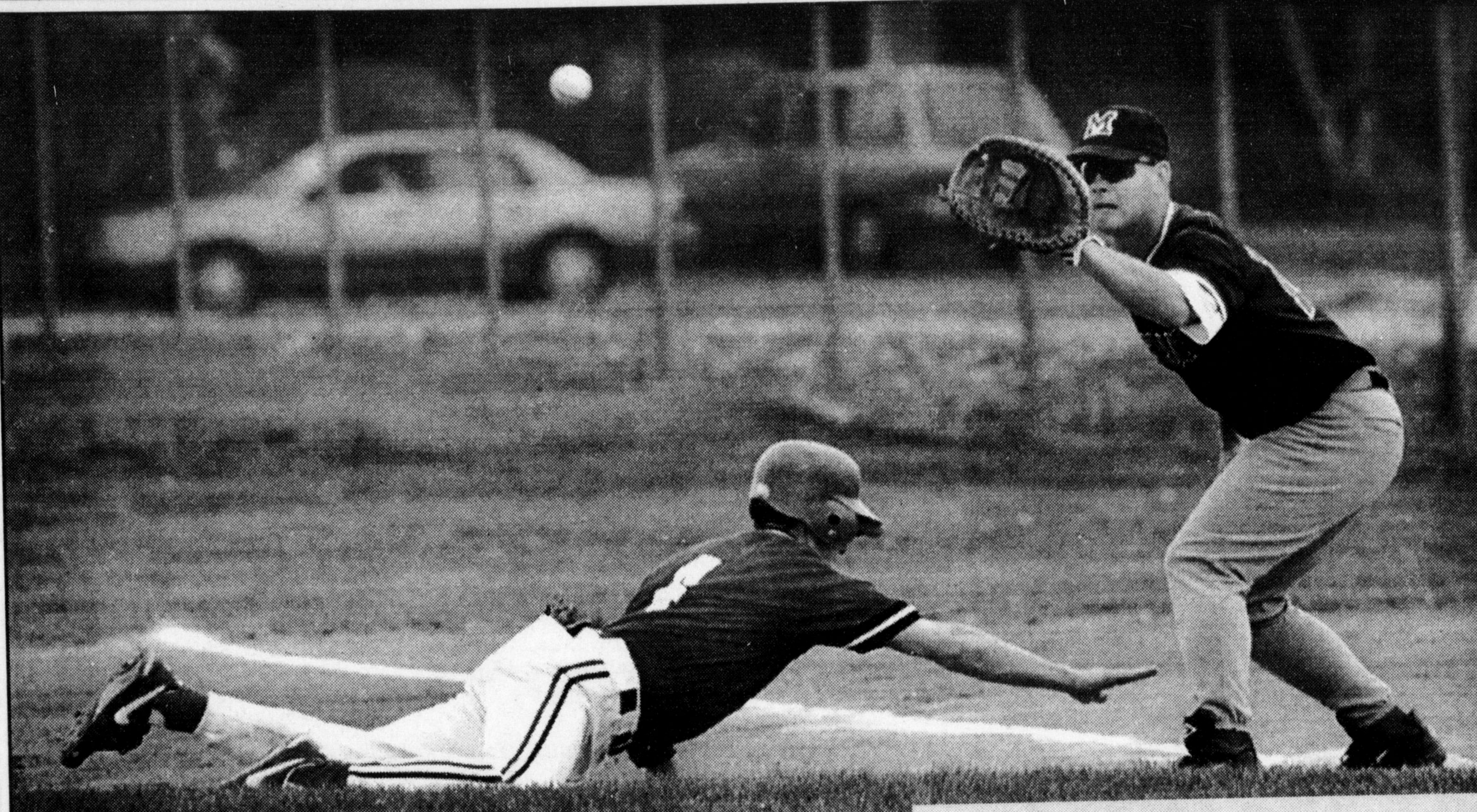
THE CANADIAN CHAMPION

meet me at



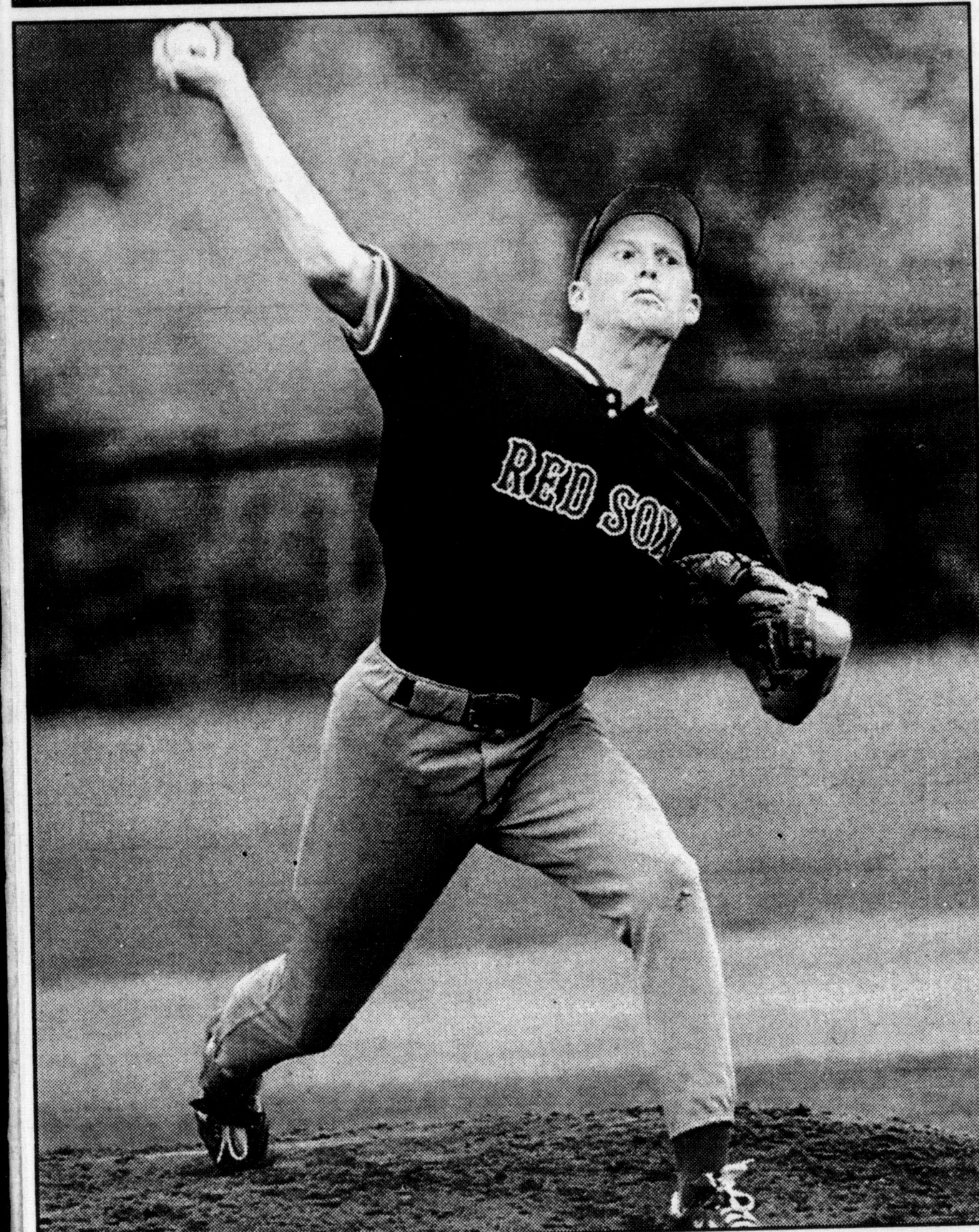
500 Laurier 878-2442

TUESDAY MAY 18, 1999



Photos by GRAHAM PAINE

Red Sox' first baseman Matt McCandless (above) eyes this pickoff attempt of an Erindale baserunner while (left) Craig Holloway delivers a pitch. Milton lost 14-2.



## Mavs have to finish better

By STEVE LeBLANC

The Champion

The Jr. B Mavericks' wins are coming with little authority but plenty of frequency.

Friday night, before roughly 150 fans at John Tonelli Sports Centre, Milton clinched their fifth consecutive victory — an 11-8 decision at the expense of Owen Sound.

This kept the locals securely stationed in second place in the Mid West Division. Also, it marked just the third time in club history that they managed to go a handful of games without losing.

Now for the downside.

The 1999 season is less than a month old and already Milton is making a habit of taking their inferior competition lightly. Twice in a row they've clearly let up over the late stages of play and come a little too close to relinquishing a hefty lead.

This troubling trend reached its peak Friday. After placing a 6-0 hammerlock on the game within 13 minutes, the Mavs switched into neutral — packing up their speedy attack and scoring only two goals during the final period and a half.

### Came close

Without the services of 100-point players Craig Ainsworth and Jon Low, both of whom went overage this year, the Flying Dutchmen were unable to completely capitalize on their hosts' generosity and make up the difference.

However, with spirited special teams play and a six-point effort from Jeff Nickel, they came awfully close.

Finally crushing the visitors' rally bid was Jason Ford, who deposited a huge rebound midway through the third.

The homegrown sophomore, who's currently on a modest three-game scoring streak, has been one of the more reliable secondary performers so far this season.

Among the others to deliver consistently solid showings are Kaegan Sherriff and Paul Wade, who could become a suitable set-up man for star sniper Cory Leigh on the second line.

Milton held 7-2 and 10-6 period leads en route to defeating Owen Sound.

Leigh and Andrew Hartholt each posted three goals and an assist while Graham Darling tallied twice. Singles were added by Ford, Wade and Jimmy Leworthy Jr.

Having sustained a minor jaw injury

• see FITS on page 20

## Red Sox need bullpen help really badly

By STEVE LeBLANC

Special to The Champion

The HJM Insurance Red Sox are in the midst of a rebuilding year, but so far construction has been painfully slow.

Since a solid yet unsuccessful season kickoff, the local men's baseball team has been buried four straight times. The latest of these blowouts came Saturday at Brian Best Park, where they were mercied 14-2 by the Erindale Cardinals in the first qualifying game for the Ontario Baseball Association championships.

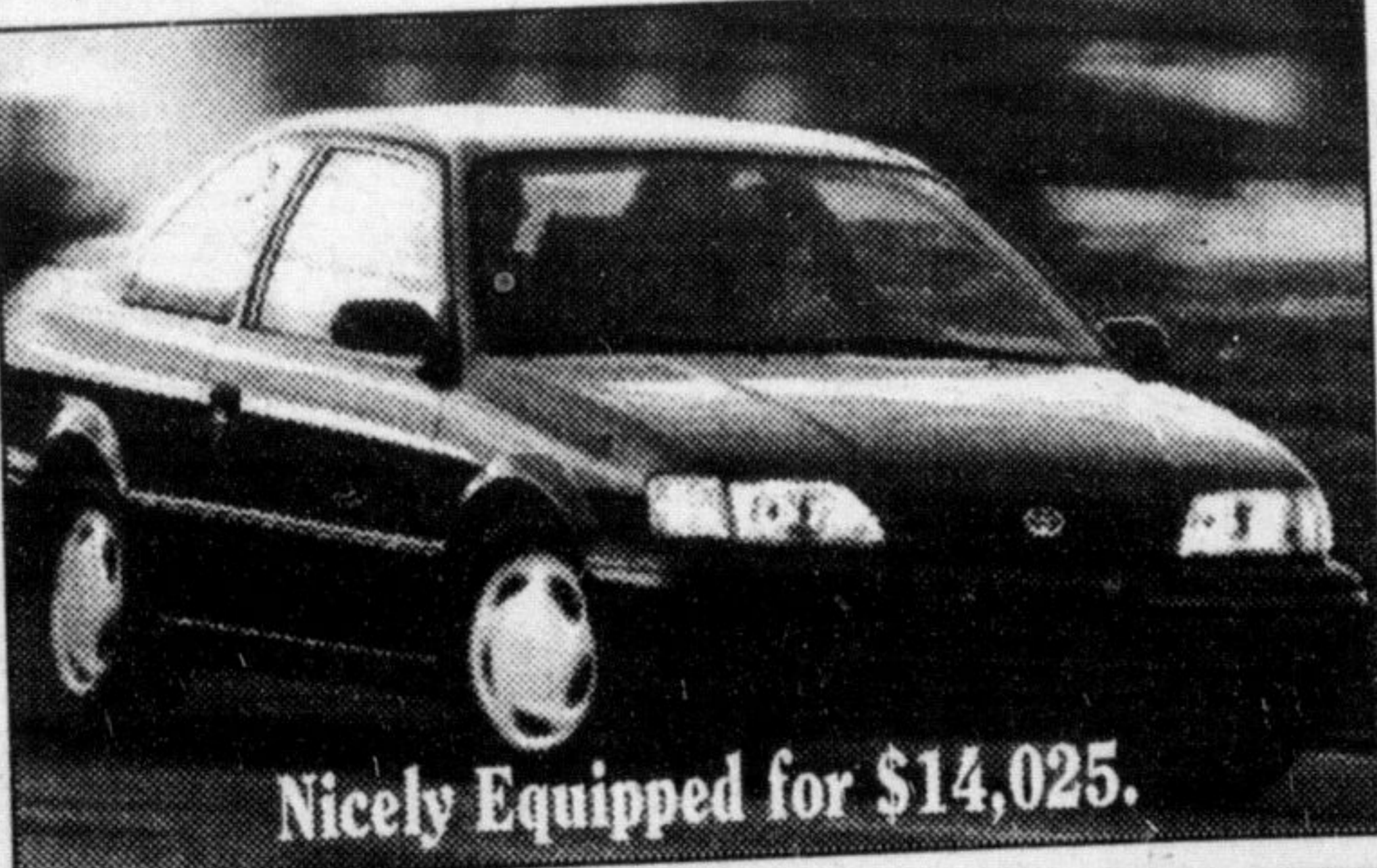
A lack of pitching depth remains the primary stumbling block to any improvement. While Milton has made some key additions this spring — including outfielder Nick Aalbers and catcher Andrew Mercier, both with the 1996 Bob Prentice champion Milton District Mustangs — they desperately need to beef up their bullpen.

That was made abundantly clear on Saturday. Starter Craig Holloway got into serious trouble in the fifth inning, but was not rescued until after he'd coughed up a handful of runs on four hits and two walks.

Relievers Ryan Ricci and Dan Fiorita didn't fare much better as

• see WANTED on page 22

HURRY IN BEFORE MAY 31<sup>ST</sup>!



Nicely Equipped for \$14,025.

2.8%  
no limit financing  
for up to  
48 months

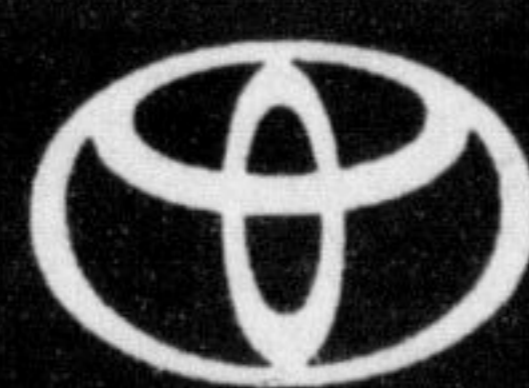
'99 TOYOTA TERCEL CE

"Number One Selling Vehicle in its Class"

\$188 + tax  
Lease  
for ONLY \$950. down

Value Package Includes: 5 spd. manual transmission • 60/40 Fold Down Rear Seat  
• Intermittent Wipers • AM/FM Cassette Stereo • Body Side Moulding

| KNOW YOUR LEASE OPTIONS |                 |
|-------------------------|-----------------|
| DOWN PAYMENT            | MONTHLY PAYMENT |
| \$0                     | \$209 + tax     |
| \$1000                  | \$187 + tax     |
| \$3000                  | \$142 + tax     |



GEORGETOWN TOYOTA SALES

15 MOUNTAINVIEW RD. N., - GEORGETOWN 877-2296 Tor. 874-4276

WEBSITE at www.haltonhills.com/toyota or E-MAIL at toyota@aztec-net.com

Based on a 48 mos. walkaway lease. First payment + security deposit due on delivery. \*Based on 96,000 km. Additional charge of \$0.07 if applicable on Tercel CE.

TOYOTA  
RED  
TAG  
Days!