

Got a hot scoop?
Call our newsroom at 878-2341 Mon. to Fri. from 9 a.m. to 5 p.m.

Extension of Hwy. 407 to be completed soon

By PAUL MITCHISON

Special to The Champion

The worst traffic jams in the province exist in south Halton and officials say a new toll highway should go a long way to alleviating them.

Construction will start this summer on

the 24-kilometre west extension of the province's 407 ETR. The toll highway extension should be opened by July 31, 2001.

The extension will run from the junction of Hwys. 407 and 403 at the Mississauga/Oakville border, to the junction of QEW and Hwy. 403 in Burlington.

Recently, Transportation Minister Tony Clement told a press conference the daily congestion on the QEW in Burlington and Oakville is the worst in Ontario. This long-delayed route will improve traffic flow, he said.

The west extension will be constructed as a six-lane highway, expandable to eight

lanes. Interchanges will be constructed at Hwy. 5, Appleby Line, Hwy. 25, Neyagawa Boulevard and Trafalgar Road.

Halton regional Chair Joyce Savoline said she was delighted with the successful negotiations, which will lead to the construction of what she called the "missing link".

"It's an end to 15 years of wondering when we were actually going to see this highway," she said. "It will relieve at least some of the congestion, so we really await with great anticipation the opening of this roadway."

Not only will the QEW flow more smoothly, she said, but also Dundas Street.

The entire toll highway will be sold for \$3.1 billion to a Spanish consortium of Grupo Ferrovial and its subsidiary, Cintra Concesiones de Infraestructuras de Transporte, SNC Lavalin, and Capital d'Amérique CDPQ, a subsidiary of the Caisse de depot et placement du Quebec.

The main investor is the second-largest construction company in Spain.

The consortium will purchase from the provincial government the right to own and operate Hwy. 407, charging tolls for 99 years.

While they will set their own rates, they will be required to achieve pre-set congestion relief targets in order to increase rates above a specified level, currently set at 11 cents per kilometre for automobiles, more for trucks. If traffic volumes aren't met, the tolls will be clawed back.

The level can be increased two per cent per year, plus the Consumer Price Index increase, for the first 15 years.

With that right, they have the obligation to finance, design and build deferred interchanges and the long-delayed west and east parts of the toll highway.

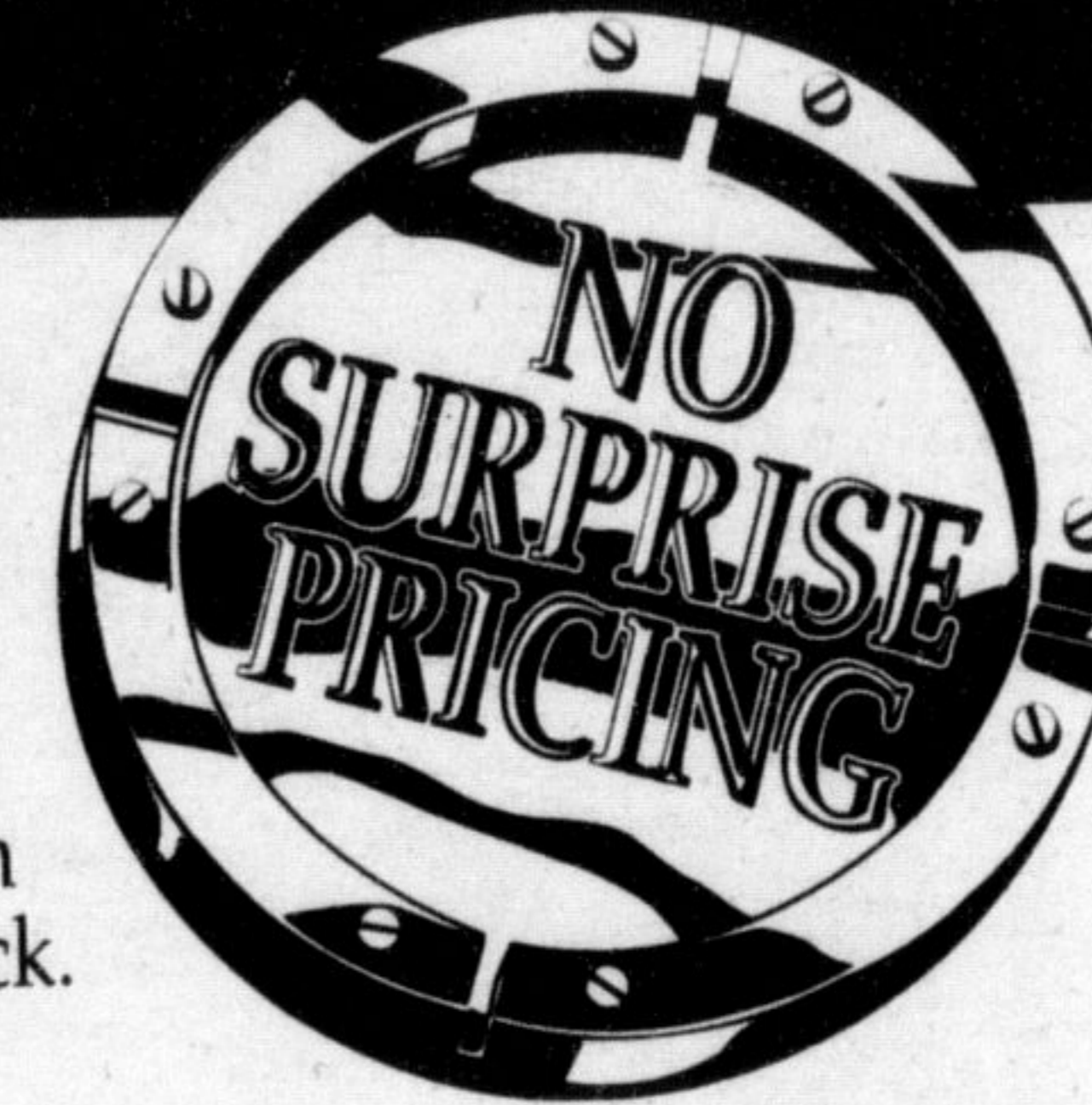
For People Who Demand Dependability



1999 CAVALIER COUPE

- 2.2 litre L4 115 hp engine • 5-speed manual transmission
- 4-wheel anti-lock braking system • Next Generation dual front air bags
- PASSLock® theft-deterrent system • rear spoiler • AM/FM stereo
- tinted glass • rear seat heat ducts • body side, body colour mouldings

Puts You In Complete Control with Up-Front, Full Disclosure Pricing With No Aftershock.



1999 CAVALIER COUPE NO SURPRISE LEASE GUIDE	
MONTHLY PAYMENT (36 mo/60,000 km)	\$178 (plus tax)
CASH DOWN (Incl. Freight of \$680)	\$2,140
GAS TAX	\$75
PRE-DELIVERY INSPECTION	NO EXTRA CHARGE
PST/GST (Incl. Tax on Payment)	\$359
SECURITY DEPOSIT	\$300
TOTAL AMOUNT DUE ON DELIVERY	\$3,052
Licence, P.P.S.A. & Admin. Fees Extra	
With \$0 down, monthly payment is \$239 (plus tax) - \$661 due on delivery.	

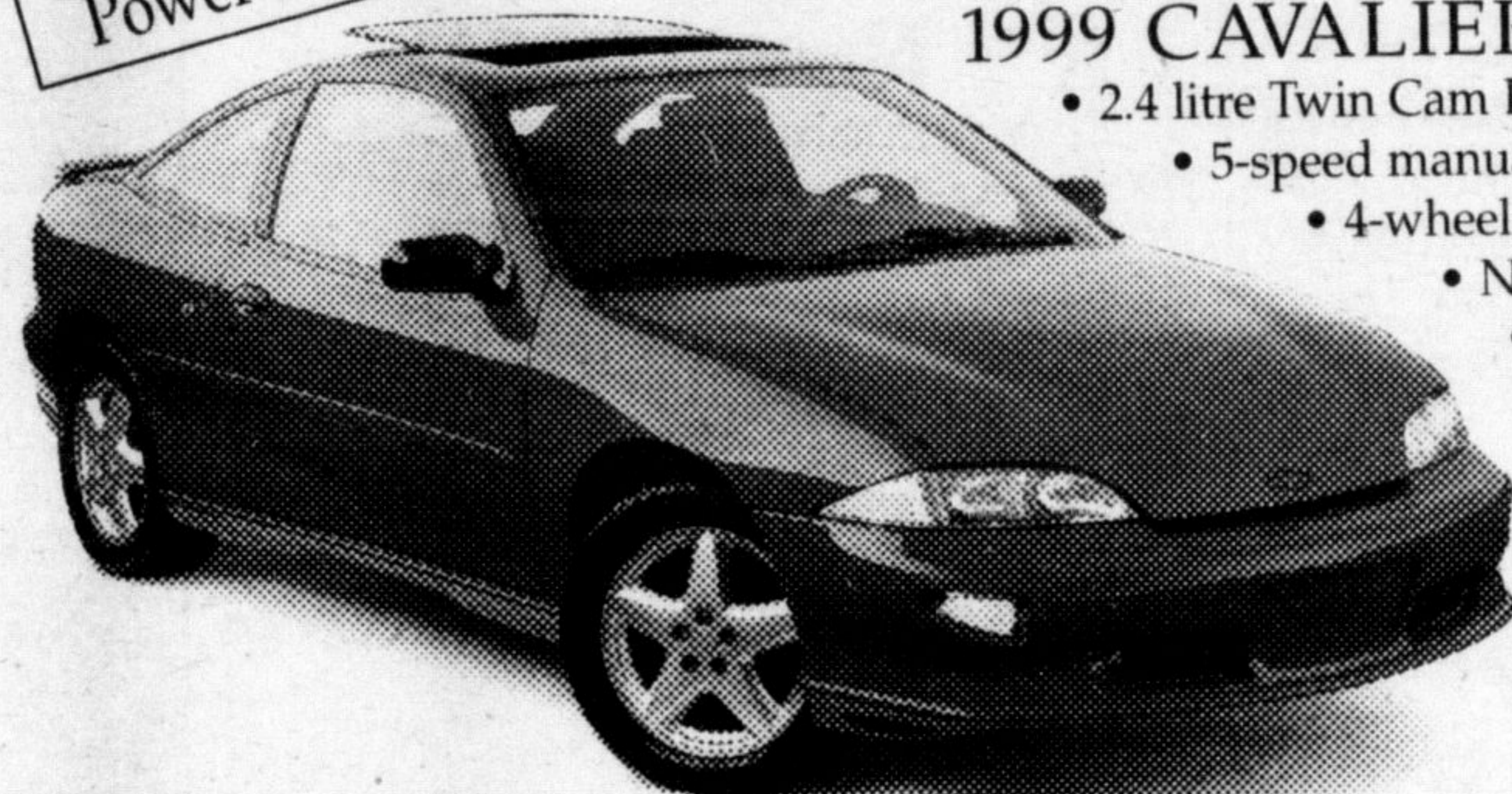
SMARTLEASE \$178 WITH 36 MONTHS	OR	PURCHASE \$15,895
LEASE RATE UP TO 36 MONTHS OR PURCHASE FINANCING UP TO 48 MONTHS (INCLUDES FREIGHT OF \$680, LICENCE, INSURANCE AND TAXES EXTRA.)		

Includes Power Sun Roof

And For Only \$50 More A Month

1999 CAVALIER Z24

- 2.4 litre Twin Cam L4 SF1 150 hp engine
- 5-speed manual transmission
- 4-wheel anti-lock braking system
- Next Generation dual front air bags
- PASSLock® theft-deterrent system
- AM/FM stereo with CD player
- rear spoiler • air conditioning
- power sunroof
- tilt/cruise
- 16" aluminum wheels
- fog lamps
- body side, body colour mouldings



1999 CAVALIER Z24 NO SURPRISE LEASE GUIDE	
MONTHLY PAYMENT (36 mo/60,000 km)	\$228 (plus tax)
CASH DOWN (Incl. Freight of \$680 and Air Tax of \$100)	\$2,080
GAS TAX	\$75
PRE-DELIVERY INSPECTION	NO EXTRA CHARGE
PST/GST (Incl. Tax on Payment)	\$357
SECURITY DEPOSIT	\$300
TOTAL AMOUNT DUE ON DELIVERY	\$3,040
Licence, P.P.S.A. & Admin. Fees Extra	
With \$0 down, monthly payment is \$288 (plus tax) - \$767 due on delivery.	

1999 CAVALIER SEDAN

- 2.2 litre L4 115 hp engine • 4-wheel anti-lock braking system
- Next Generation dual front air bags • PASSLock® theft-deterrent system • AM/FM stereo
- child-security rear door locks • rear seat heat ducts • body colour mouldings • mud guards • battery run-down protection • Value Package - includes power door locks, cruise control, air conditioning and automatic transmission.



PURCHASE \$17,995 (Includes Freight of \$680 and Air Tax of \$100. Licence, insurance and taxes extra)
1.9% LEASE RATE UP TO 36 MONTHS OR PURCHASE FINANCING UP TO 48 MONTHS
SMARTLEASE \$208 36 MONTHS

1999 CAVALIER SEDAN NO SURPRISE LEASE GUIDE	
MONTHLY PAYMENT (36 mo/60,000 km)	\$208 (plus tax)
CASH DOWN (Incl. Freight of \$680 and Air Tax of \$100)	\$2,110
GAS TAX	\$75
PRE-DELIVERY INSPECTION	NO EXTRA CHARGE
PST/GST (Incl. Tax on Payment)	\$359
SECURITY DEPOSIT	\$300
TOTAL AMOUNT DUE ON DELIVERY	\$3,052
Licence, P.P.S.A. & Admin. Fees Extra	
With \$0 down, monthly payment is \$269 (plus tax) - \$721 due on delivery.	

1999 CHEVROLET MALIBU

- 2.4 litre Twin Cam 150 hp engine • 4-speed automatic transmission • 4-wheel anti-lock braking system
- Next Generation dual front air bags
- PASSLock® theft-deterrent system
- air conditioning • child-security rear door locks • AM/FM stereo with cassette • Tilt-Wheel™ steering • body side, body colour mouldings • power trunk release



PURCHASE \$19,995 (Includes Freight of \$720 and Air Tax of \$100. Licence, insurance and taxes extra)
4.9% PURCHASE FINANCING UP TO 48 MONTHS
SMARTLEASE \$228 36 MONTHS

1999 CHEVROLET MALIBU NO SURPRISE LEASE GUIDE	
MONTHLY PAYMENT (36 mo/60,000 km)	\$228 (plus tax)
CASH DOWN (Incl. Freight of \$720 and Air Tax of \$100)	\$2,410
GAS TAX	\$75
PRE-DELIVERY INSPECTION	NO EXTRA CHARGE
PST/GST (Incl. Tax on Payment)	\$407
SECURITY DEPOSIT	\$300
TOTAL AMOUNT DUE ON DELIVERY	\$3,420
Licence, P.P.S.A. & Admin. Fees Extra	
With \$0 down, monthly payment is \$301 (plus tax) - \$782 due on delivery.	

Cops are providing fun outing for kids

By HOWARD MOZEL
 Special to The Champion

Halton Regional Police are gearing up once again for their annual Special Friends Day at Appleby College.

The event — which takes place June 13 from 10 a.m. to 3 p.m. — provides the opportunity for developmentally and physically challenged individuals and their families to enjoy a day of non-competitive activities with police, fire and ambulance personnel.

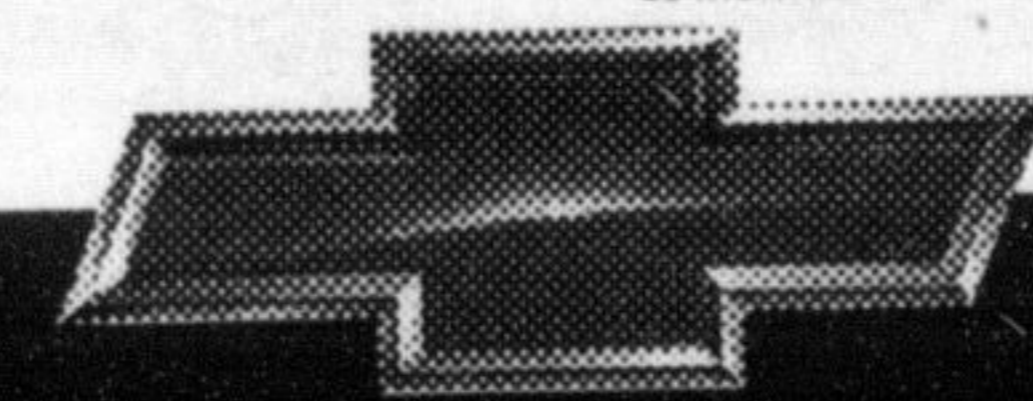
Participants also get a close up look at emergency equipment and training simulations.

All members of the community are welcome.

According to Staff Sgt. Peter Hodgson, activities include horse and carriage rides, magic shows, a dunk tank, mini golf, baseball, basketball and a chance to sit in an OPP helicopter. There will also be food refreshments.

Although there are no age restrictions, most of the participants are young people. According to Staff Sgt. Hodgson, the main goals of the day are to have fun and promote a better understanding between the special friends and the community at large.

"The main goal is that every child leaves with a smile on their face," said Staff Sgt. Hodgson. "It's very much a family day."



Tried Tested & True
Chevrolet Dealers
 OF ONTARIO



We'd like you to know more: Come visit us at your local dealer, on our website at www.gmcanada.com or call us at 1-800-GM-DRIVE. All leases have annual kilometre limit of 20,000 km. \$0.12 per excess kilometre. PST, GST and insurance extra. All leases have an annual cost of borrowing of 1.9%/5.4% per annum for Cavalier/Malibu. Other lease options available. Financing on approved GMAC credit only. Example: \$10,000 at 1.9%/4.9% APR, the monthly payment is \$216.51/\$229.84 for 48 months. Cost of borrowing is \$392.48/\$1032.32. Total obligation is \$10,392.48/\$11,032.32. Down payment and/or trade may be required. Monthly payment and cost of borrowing will vary depending on amount borrowed and down payment/trade. Offers apply as indicated to new 1999 models of Cavalier Coupe R7Z/Cavalier Z24 Coupe R7Q/Cavalier Sedan R7Q/Malibu R7Z equipped as described. Offers apply to qualified retail customers in the Ontario Chevrolet Dealer Marketing Association only. Dealer order or trade may be necessary. Limited time offer which may not be combined with other offers. Dealer may sell or lease for less. See your dealer(s) for conditions or details.