

Dateline

• from DATELINE on page 36
Tuesday May 18

The Peel North branch of the **Ontario Association of Superannuated Women Teachers** meets at Heart Lake United Church, 85 Sandlewood Parkway, in Brampton at 10 a.m. The meeting features installation of new officers, painting by Marion Jonassen and 'Travelogue' on the Philippines presented by Janet Nielsen. Lunch costs \$10. Call Irene Spencer at (905) 793-2696.

Small group adult literacy classes start in Milton. Call 873-2200 for more information.

The Halton Regional Health Department hosts the **Nutrition Expedition Junior** — a free hour-long tour in the grocery store for parents and caregivers. Participants learn about young children and nutrition. The event takes place at Loblaws from 7 to 8 p.m. Call 825-6116 to register.

Wednesday May 19

Ladies are invited to attend neighbourhood **Coffee Hour** from 9:30 to 11 a.m. at Allendale auditorium, 185 Ontario St. The special feature is 'Gardening 2000: Try something New Besides the Tried and True' by Belinda Gallagher, master gardener. The guest speaker is Joan McIntee. The event is hosted by the Milton Christian Ladies Coffee Hour. Admission is free and babysitting is provided.

The Bishop Reding School Council holds an information night on **secondary school reform** presented by the Halton Catholic District School Board's curriculum department. The event takes place at the Main Street school at 7:30 p.m.

Oakville-Trafalgar Memorial Hospital holds a **seminar** featuring Dr. Eric Leith, allergist, and Eileen Gagne, an asthma educator, who discusses the latest treatment options and procedures for the proper maintenance of asthma. The displays begin at 6:30 p.m. with the seminar commencing

at 7 p.m. A flat fee of \$3 exists for parking in the hospital. To reserve a seat, call 338-4379.

The North Halton Distress and Information Centre hosts free seminar **'From Grief to Healing — the Grieving Process'** at 7 p.m. The speaker is Roslyn Chrichton of the Coping Centre in Guelph. The event takes place in Georgetown at the Ministry of Agriculture building at 332 Guelph Street. In addition to community seminars, the program offers group support and one-to-one support from volunteers who have experienced grief in their own lives. For more information or to register for the seminar, call the Distress Centre at 877-1211.

Milton Wheels to Meals holds a luncheon in the Loblaws Community Room. Transportation and assistance can be arranged for those that require it. The cost is \$5 for a hot meal. Call Mary at 878-6699.

The Milton Tennis Club holds open house **'Welcome to Tennis — The Sport for a**

Lifetime' at its clubhouse, 670 Childs Dr., at 7:40 p.m. Visitors are invited to learn about the game of tennis, equipment, club activities and more.

Thursday May 20

Cherish Nursery School, 540 Childs Dr., holds **Fall 1999 Registration Day** from 9:30 to 11:30 a.m. For information, call 876-1244, ext. 16.

The **Milton Historical Society** meets at the Royal Canadian Legion, 21 Charles St., at 8 p.m. to explore the military history of Halton with Rev. Rick Ruggles, retired chaplain of the Lorne Scots. Everyone is welcome. No admission. Call 875-4588 for more information.

The Canadian Red Cross Society holds a **blood donor clinic** at the Milton Seniors' Activity Centre, 500 Childs Dr., from 1:30 to 8 p.m. Call 1-888-871-7201, ext. 4253, for more information or to book an appointment.

GALLINGER FORD LINCOLN MERCURY GALLINGER FORD LINCOLN MERCURY

0%
 '99 ESCORT*

HELP!

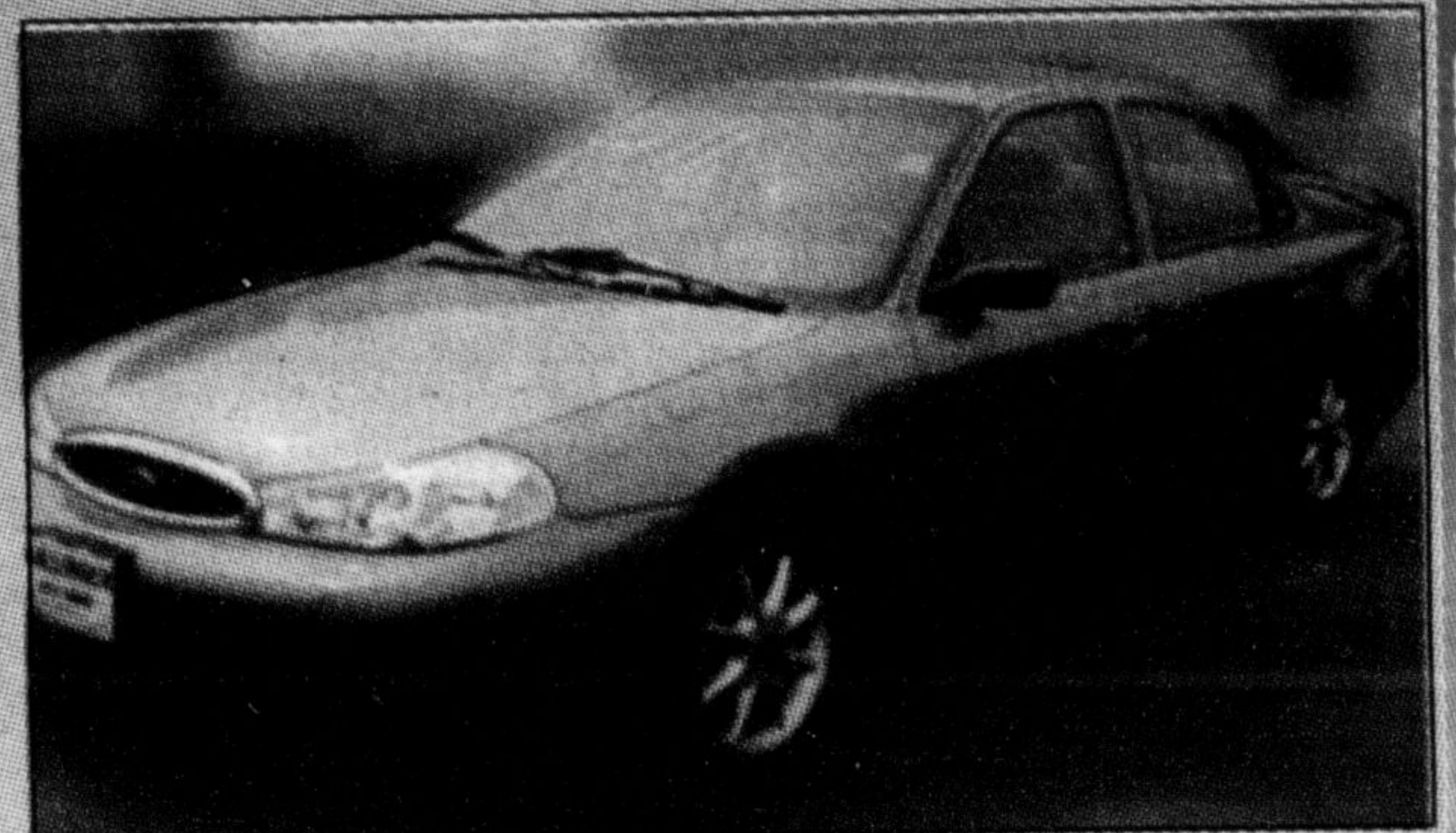
0%
 '99 WINDSTAR*



1998 Ranger 4x4



1998 ZX2



1998 Contour

0%
 '99 TAURUS*

These NEW 1998 Vehicles NEED
A New Home.

0%
 '99 SABLE*

NO REASONABLE OFFER REFUSED!



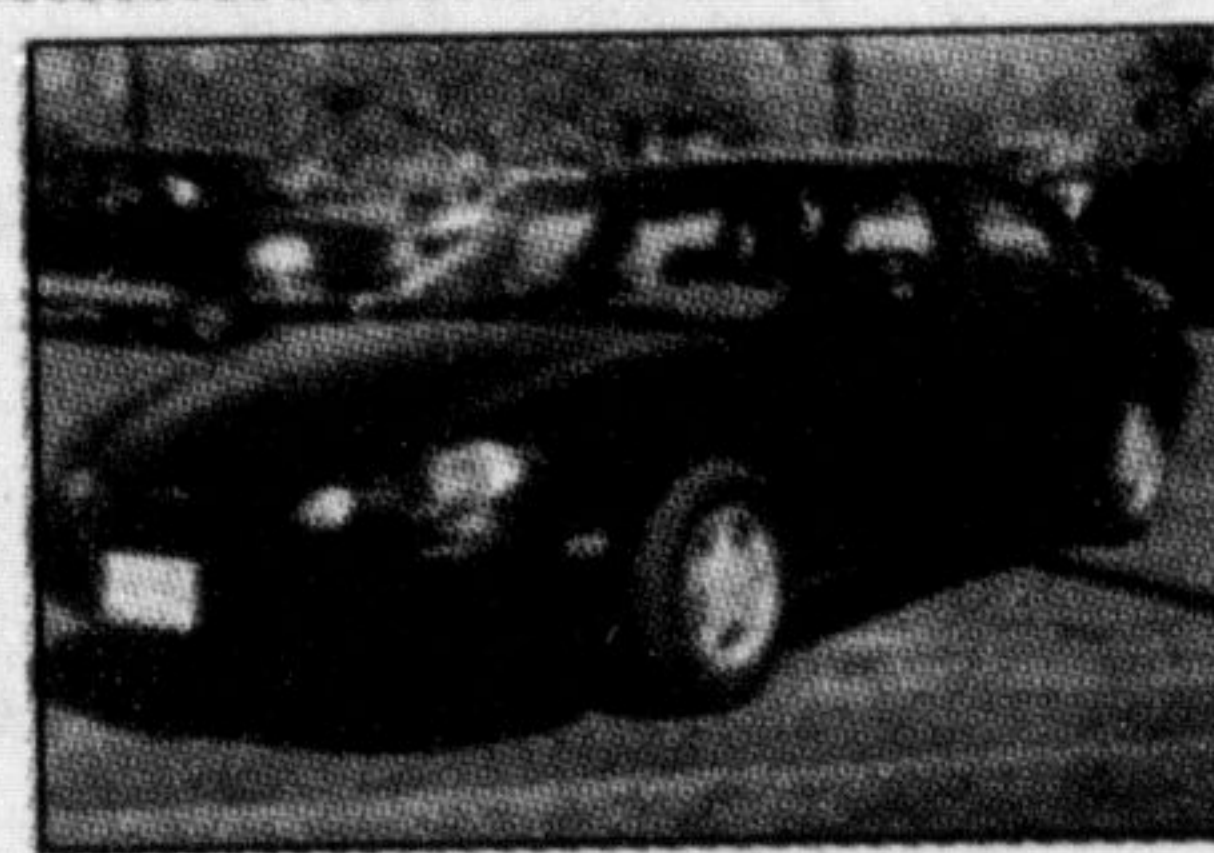
\$346/mo.†



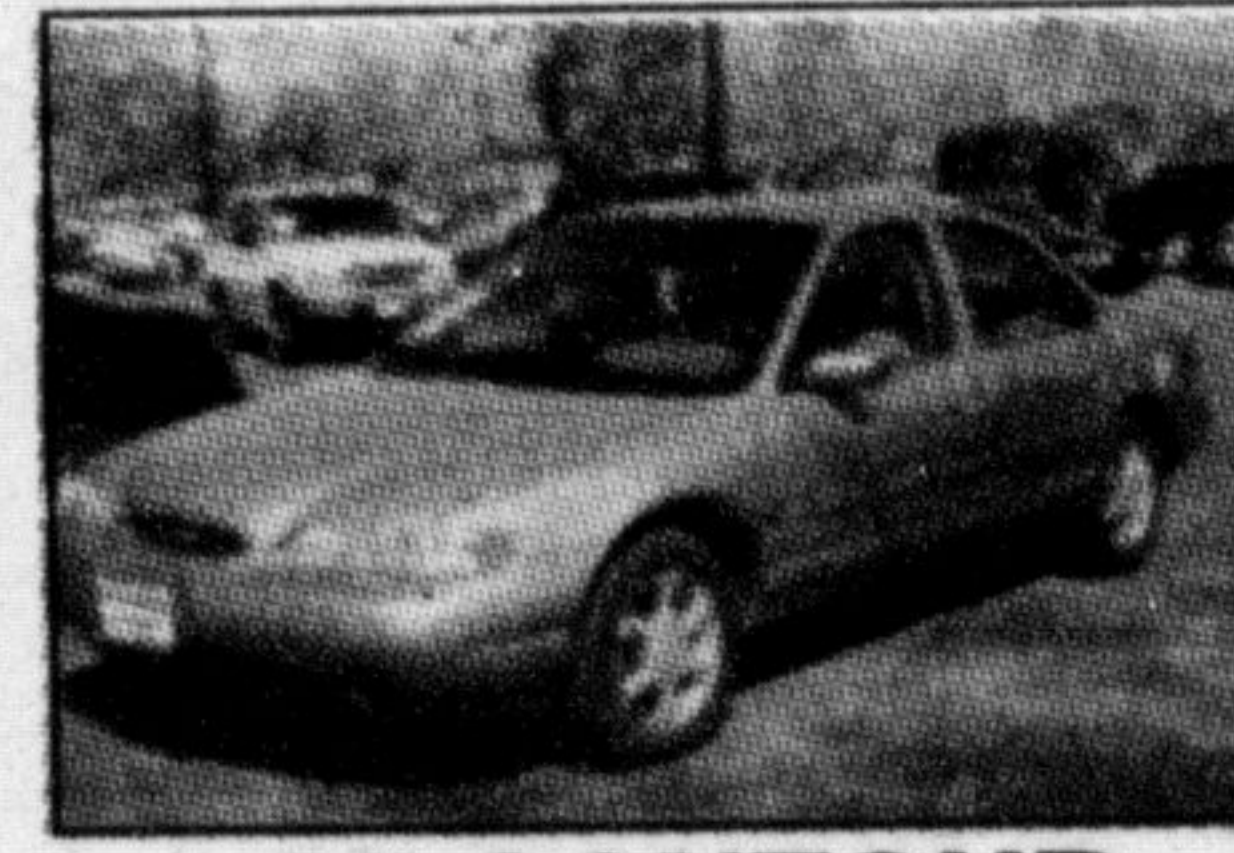
\$397/mo.†



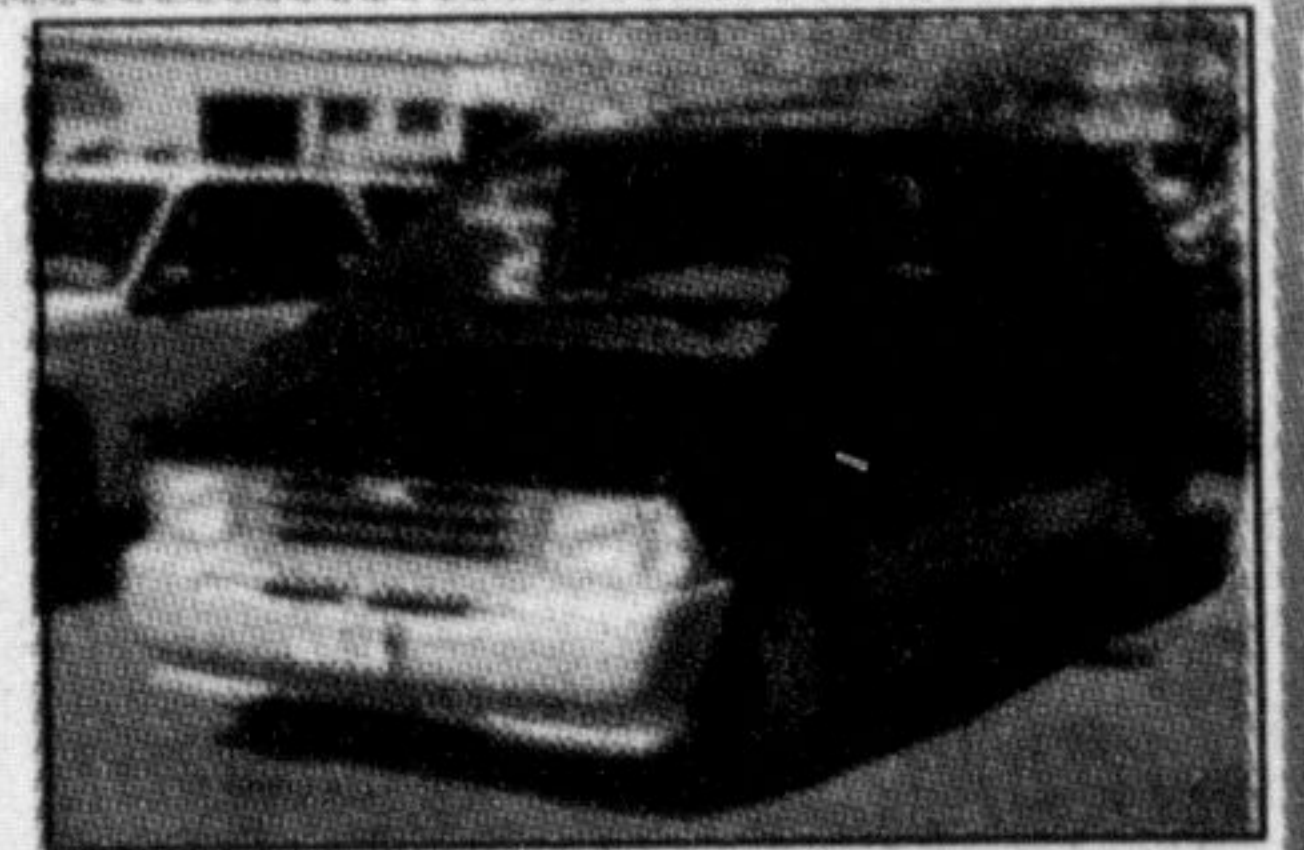
\$377/mo.†



\$238/mo.†



\$247/mo.†



\$299/mo.†

*up to 36 months, O.A.C. †Lease payments based on 36 months, 18,000 km/year, \$2500 down payments & down plus taxes, plus first, security deposit & fees.

Serving Halton since 1967

ASK US ABOUT



GALLINGER

MOTORS LIMITED

• 655 MAIN ST. E., MILTON • 875-3673



GALLINGER FORD LINCOLN MERCURY

GALLINGER FORD LINCOLN MERCURY