


MILTON CHRYSLER DODGE JEEP

WE ARE CONDUCTING

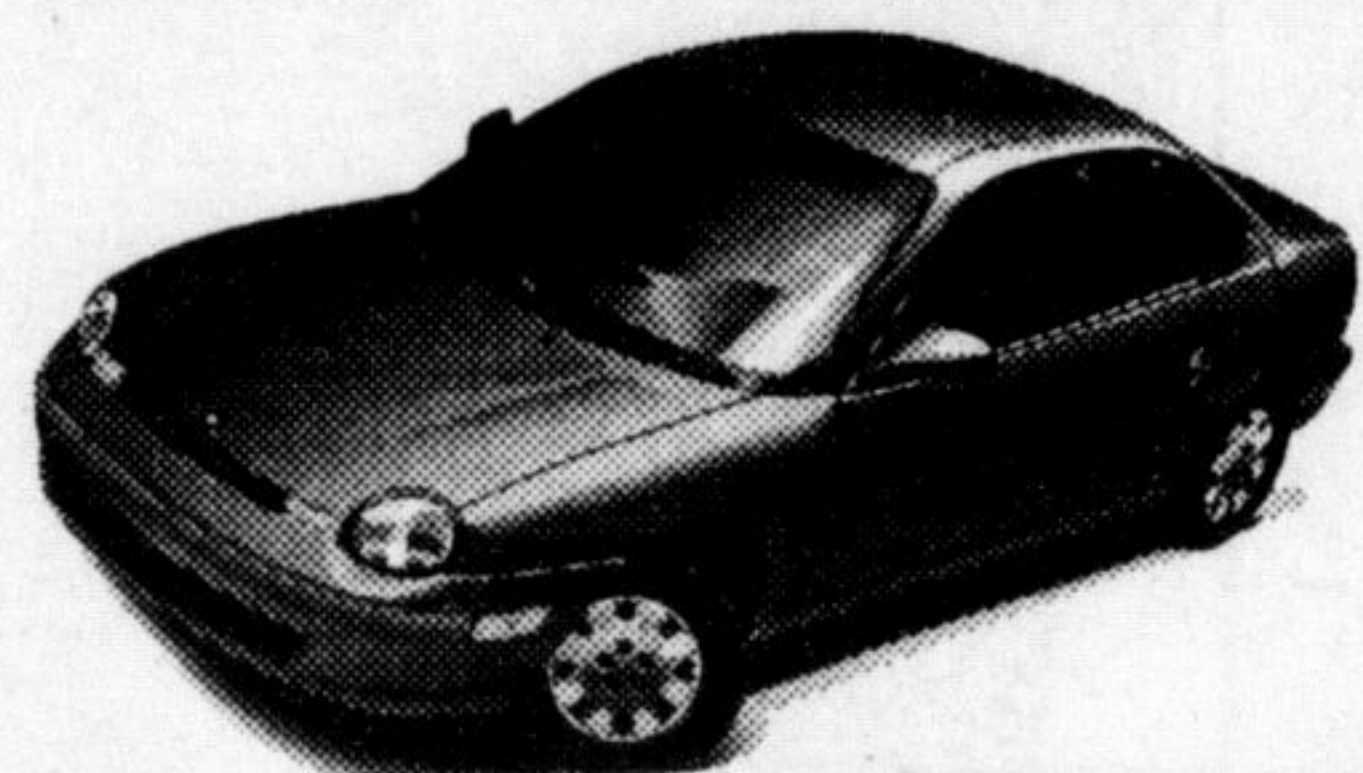
MISSION POSSIBLE

EMERGENCY INVENTORY BAILOUT


\$750
GRAD REBATE

OVER 350 VEHICLES AVAILABLE "BAILOUT" PRICED

DODGE NEON



0% Fin. Rate or **\$1000 CASH* BACK**

DODGE CARAVANS & GRAND CARAVANS



1.8% Fin. Rate or **\$1250 CASH* BACK**

DODGE RAM PICKUP



2.8% Fin. Rate or **4.8% LEASE* RATE**

CHRYSLER INTREPID



1.8% Fin. Rate or **2.8% LEASE* RATE**

CHRYSLER NEON 2000



5.8% FINANCE* RATE

CHRYSLER CIRRUS



1.8% FINANCE* RATE OR 3.8% LEASE* RATE

JEEP TJ



FACTORY REBATES

DODGE STRATUS



0% FINANCE* RATE OR **\$1000 CASH* BACK**

CHRYSLER CONCORDE



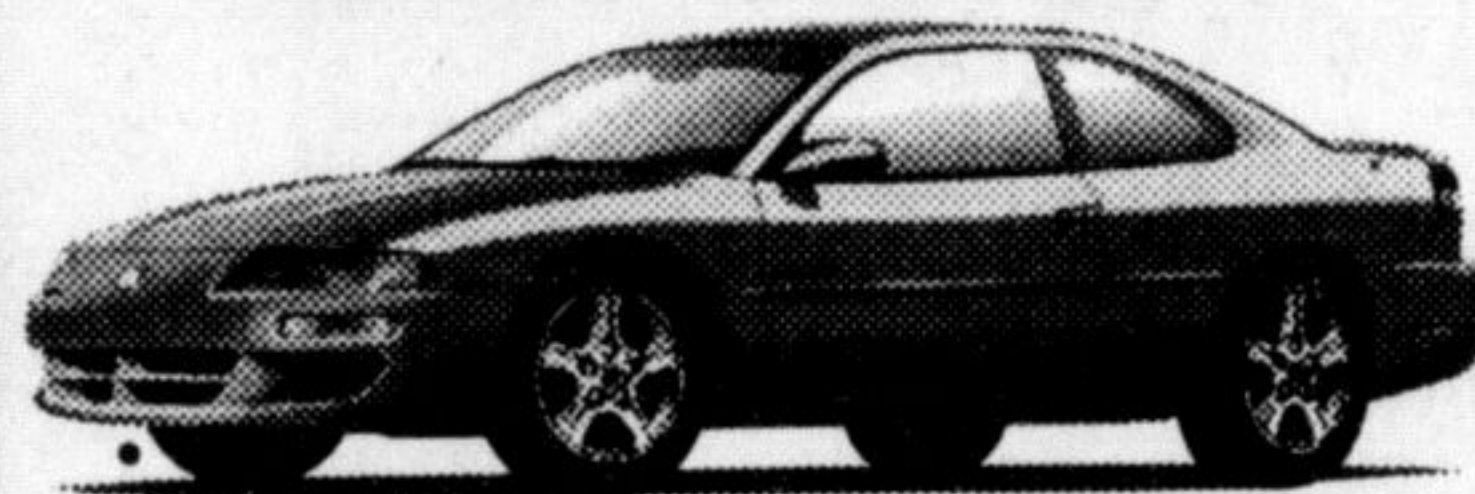
2.8% FINANCE* LEASE RATE

JEEP CHEROKEE



2.8% FINANCE* RATE OR 4.8% LEASE* RATE

DODGE AVENGER



SPECIAL FACTORY* TO DEALER REBATES

CHRYSLER 300M



2.8% FINANCE* LEASE RATE

JEEP GRAND CHEROKEE



4.8% FINANCE* RATE OR 6.8% LEASE* RATE

CHRYSLER SEBRING



SPECIAL FACTORY* TO DEALER REBATES

CHRYSLER LHS



2.8% FINANCE* LEASE RATE

DODGE DAKOTA CLUB CAB



2.8% FINANCE* RATE OR **\$750 CASH* BACK**

CHRYSLER SEBRING CONVERTIBLE



SPECIAL LEASE RATES

CHRYSLER TOWN & COUNTRY



1.8% FINANCE* RATE OR 2.8% LEASE* RATE

DODGE DURANGO



SPECIAL LEASE DEALS

"WE'RE OVERSTOCKED"

OUR BACKS ARE AGAINST THE WALL DUE TO A CONFLICT IN ORDER SCHEDULING WE HAVE FOUND OURSELVES IN THE DESPERATE POSITION OF BEING DRASTICALLY OVERSTOCKED.

WE ARE CALLING TO OUR COMMUNITY TO HELP BAIL US OUT. WE NEED TO SELL A LARGE PORTION OF OUR INVENTORY FAST!

WE ARE SERIOUS ABOUT THIS SITUATION AND WE WILL SAVE EVERY CUSTOMER A SUBSTANTIAL AMOUNT OF MONEY, SO MUCH THAT WE'RE NOT AT LIBERTY TO ADVERTISE OUR PRICES.

EVEN DEALERS ARE INVITED TO SAVE!!!

EVERY OFFER WILL BE CONSIDERED!!

TOP DOLLAR FOR YOUR TRADE IN!!

EVERY VEHICLE IS ON SALE!!!

*Special finance rates or lease rates are available in lieu of factory RDA discounts (cash back & rebates). Special finance rates are 48 month term, special lease rates are in 36 month terms. Special finance rates disclosed are not available on RAM V10 & Diesel + Grand Cherokee V8. Special lease rates disclosed are not available on RAM V10 and Diesel + Grand Cherokee V8. Other rate programs may apply. OAC. See dealer for details.

A DEALER OF EXCELLENCE!

878-8877

Email: miltonchrysler@hotmail.com



81 ONTARIO ST. N. MILTON

