

IT'S NO ORDINARY TRUCK SALE. THE ULTIMATE GMC TRUCK EVENT.



1999 GMC SIERRA EXTENDED CAB

Vortec 4800 V8 engine, 255 HP · Automatic transmission with overdrive · Air conditioning · Largest third door opening^Δ · AM/FM stereo with cassette · PASSLock[®] theft-deterrent system · Full instrumentation including tachometer and hour meter · Driver Message Center · Chrome grille, bumper and wheels · Tilt-Wheel[™] steering · 40/20/40 split bench seat · Front tow hooks

THE 1999 GMC SIERRA HAS MORE HEAD & LEG ROOM THAN THE F-150 XLS OR THE RAM 1500 ST.

SMARTLEASE
\$388
 PER MONTH/36 MONTHS/
 \$1,550 DOWN PAYMENT REQUIRED/
 \$940 FREIGHT REQUIRED
NO SECURITY DEPOSIT
 OR
 PURCHASE PRICE
\$27,168
 EXCLUDES FREIGHT \$940
 WITH **2.9%**
 PURCHASE FINANCING UP TO 48 MONTHS

1999 SIERRA EXTENDED CAB		
Down Payment	Lease Payment	Total Due On Signing ^{††}
\$0	\$436/month	\$1,582.40
\$1,550	\$388/month	\$3,309.70
\$3,745	\$327/month	\$5,754.60

††Total due on signing includes down payment, freight, 1st month's payment plus taxes, GST, PST and gas tax. Licence, insurance, P.P.S.A. and admin. fees extra.

GM Accessories

TRIM YOUR TRUCK WITH A GENUINE GM ACCESSORY PACKAGE. SPECIALLY PRICED OFFER. LEASE FOR \$16** PER MONTH/36 MONTHS OR PURCHASE FOR \$919**. AVAILABLE FOR A LIMITED TIME.



1999 GMC SONOMA

4.3 litre V6 175 HP engine · Air conditioning · 4-wheel ABS brakes · AM/FM stereo CD player · Bucket seats · Tinted glass · Next Generation driver/passenger air bags · PASSLock[®] security system · ZQ8 sport suspension · Sportside pickup box · 16" special aluminum wheels

1999 GMC SONOMA		
Down Payment	Lease Payment	Total Due On Signing ^{††}
\$0	\$305/month	\$1,569.00
\$2,230	\$238/month	\$4,006.45
\$4,000	\$185/month	\$5,981.00

††Total due on signing includes down payment, freight, security deposit, 1st month's payment plus taxes, GST, PST and gas tax. Licence, insurance, P.P.S.A. and admin. fees extra.

SMARTLEASE
\$238
 PER MONTH/36 MONTHS/
 \$2,230 DOWN PAYMENT REQUIRED/
 \$755 FREIGHT AND \$300 SECURITY
 DEPOSIT REQUIRED
 OR
 PURCHASE PRICE
\$22,498
 EXCLUDES FREIGHT \$755
 WITH
2.9%
 PURCHASE FINANCING UP TO 48 MONTHS



1999 GMC JIMMY 4x4 4-DOOR

4.3 litre Vortec 4300 V6 190 HP engine · Automatic transmission · Next Generation dual front air bags · 4-wheel ABS · Power door locks/windows · Tilt-Wheel[™] · AM/FM stereo cassette · Air conditioning · Locking differential · Premium ride suspension · Remote keyless entry system · Rear liftgate with liftglass

1999 GMC JIMMY 4-DOOR		
Down Payment	Lease Payment	Total Due On Signing ^{††}
\$0	\$444/month	\$2,363.85
\$2,870	\$358/month	\$5,465.45
\$5,000	\$294/month	\$7,841.35

††Total due on signing includes down payment, freight, security deposit, 1st month's payment plus taxes, GST, PST and gas tax. Licence, insurance, P.P.S.A. and admin. fees extra.

SMARTLEASE
\$358
 PER MONTH/36 MONTHS/
 \$2,870 DOWN PAYMENT REQUIRED/
 \$755 FREIGHT AND \$425 SECURITY
 DEPOSIT REQUIRED
 OR
 PURCHASE PRICE
\$34,378
 EXCLUDES FREIGHT \$755
 WITH
2.9%
 PURCHASE FINANCING UP TO 48 MONTHS



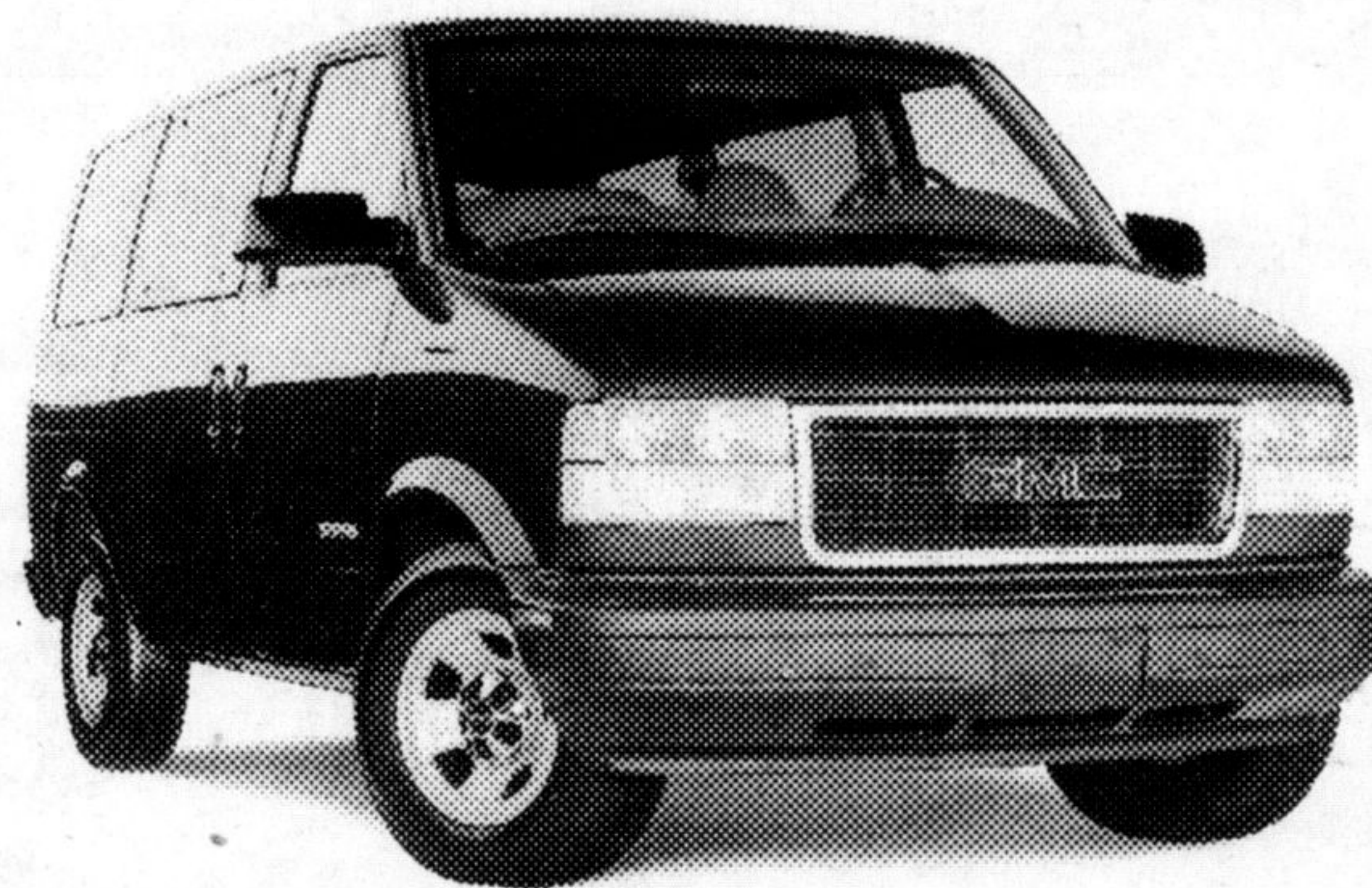
1999 PONTIAC TRANS SPORT

3.4 litre 3400 V6 185 HP engine · 4-speed automatic transmission · Air conditioning · Next Generation driver and front passenger air bags · Seat-mounted side air bags · 4-wheel ABS · AM/FM stereo · Heated power mirrors · Programmable power door locks

1999 PONTIAC TRANS SPORT		
Down Payment	Lease Payment	Total Due On Signing ^{††}
\$0	\$329/month	\$1,807.60
\$3,150	\$238/month	\$5,225.45
\$5,000	\$184/month	\$7,290.85

††Total due on signing includes down payment, freight, security deposit, 1st month's payment plus taxes, GST, PST and gas tax. Licence, insurance, P.P.S.A. and admin. fees extra.

SMARTLEASE
\$238
 PER MONTH/36 MONTHS/
 \$3,150 DOWN PAYMENT REQUIRED/
 \$895 FREIGHT AND \$300 SECURITY
 DEPOSIT REQUIRED
 OR
 PURCHASE PRICE
\$23,798
 EXCLUDES FREIGHT \$895
 WITH
1.9%
 PURCHASE FINANCING UP TO 48 MONTHS



1999 GMC SAFARI

4.3 litre Vortec 4300 V6 190 HP engine · 4-speed automatic transmission with overdrive · 4-wheel ABS · Next Generation dual front air bags · Air conditioning · AM/FM stereo with cassette · Cloth seats · Deluxe chrome grille · Deep tinted glass · Power door locks · Roof luggage carrier

PURCHASE PRICE
\$20,998
 EXCLUDES FREIGHT \$895



LIMITED TIME OFFER. HURRY IN.
ONLY AT YOUR ONTARIO GMC DEALERS.



We'd like you to know more: Come visit us at your local dealer, on our website at www.gmcanada.com or call 1-800-GM-DRIVE. *Offers based on a Sierra Extended Cab R7Z/Sonoma R7Z/Jimmy 4-door R7Z/Trans Sport R7Z/Safari R7Z. Annual cost of borrowing 8.4%/5.4%/5.4%/3.4% per annum. Annual kilometre limit 20,000 km, \$0.12 per excess kilometre. Other lease options available. †Freight (as indicated), licence, insurance, P.P.S.A., administration fees, and taxes not included. Dealer may sell or lease for less. ††Financing on approved GMAC credit only. Example: \$10,000 at 1.9% APR, the monthly payment is \$216.51 for 48 months. Cost of borrowing is \$392.48. Total obligation is \$10,392.48. Example: \$10,000 at 2.9% APR, the monthly payment is \$220.90 for 48 months. Cost of borrowing is \$603.20. Total obligation is \$10,603.20. Down payment, trade and/or security deposit may be required. Monthly payment and cost of borrowing will vary depending on amount borrowed and down payment/trade. †††Offers apply to select 1999 new or demonstrator models, and to qualified customers in Ontario only (excluding Thunder Bay and Kenora). Limited time offers which may not be combined with other offers. Dealer order/trade may be necessary. See your dealer(s) for conditions and details. ΔIn 1500 Series class.