

Dateline

• from DATELINE on page 18

shops on resume writing (9:30 a.m.) and creating a dynamic introduction letter (1 p.m.). For more information, call the centre at 876-9828.

The **Milton and District Horticultural Society** meets at 7:30 p.m. at the Royal Canadian Legion on Charles Street. The speaker is Grahame Beakhurst — the 'Guerrilla Gardener'. New members are welcome.

Tuesday Apr. 20

The **Ontario Association of Superannuated Women Teachers**, a non-profit organization for retired women teachers, meets at St. James Anglican Church, 6029 Old Church Rd., in Caledon East at 10 a.m. Meeting events include payment of annual fees and a parade of wedding gowns. Lunch costs \$10. For more information, contact Irene Spencer at (905) 793-2696.

Wednesday Apr. 21

Nassagaweya Rural Watch meets at Brookville Hall at 7:30 p.m. The topics are home security, local break-in details and road safety initiatives and concerns. All are welcome.

Milton Wheels to Meals hosts a luncheon in the Loblaws Community Room. Transportation and assistance can be arranged for those that require it. The cost is \$5 for a hot meal. For information, call Mary at 878-6699.

Ladies are invited to attend a neighbourhood **Coffee Hour** from 9:30 to 11 a.m. at Allendale Auditorium, 185 Ontario St. The special feature is Milton Suzuki Strings. The guest speaker is Grace McGrath. The event is hosted by the Milton Christian Ladies Coffee Hour. Admission is free and babysitting is provided.

The **La Leche League of Milton** meets at CHERISH Family Resource Centre, 540 Childs Dr., at 8 p.m. Women interested in information about breast-

feeding are welcome, as are babies. The topic for informal discussion, led by accredited leaders, is 'Baby's Changing Needs'. For more information, call 876-0772 or 876-3322.

Thursday Apr. 22

The Canadian Mental Health Association begins a six-week series entitled **Anger Management**. Participants learn about the role of anger, healthy and unhealthy anger, belief systems, attitudes, distorted thinking, styles of anger and how they're learned, direct communication and positive assertiveness for conflict resolution. The series, held Thursdays until May 27, runs from 7 to 9 p.m. in Milton. To register or for more information, call 693-4270.

Career help expo coming

People curious about careers in the construction industry or in manufacturing can find out more about both fields at Milton Mall soon.

The Skilled Trades and Apprenticeship Mall Talks will feature employers and apprentices involved in the fields, as well as people from the Halton Industry Education Council, which provides career planning annually to more than 11,000 Halton students.

The council is working with Human Resources Development Canada to organize the talks.

Construction industry job and training opportunities will be showcased at Milton Mall from 7 p.m. through 9 p.m. Thursday, April 29. The manufacturing industry will take centre stage in Milton Thursday, May 27, again from 7 p.m. through 9 p.m.

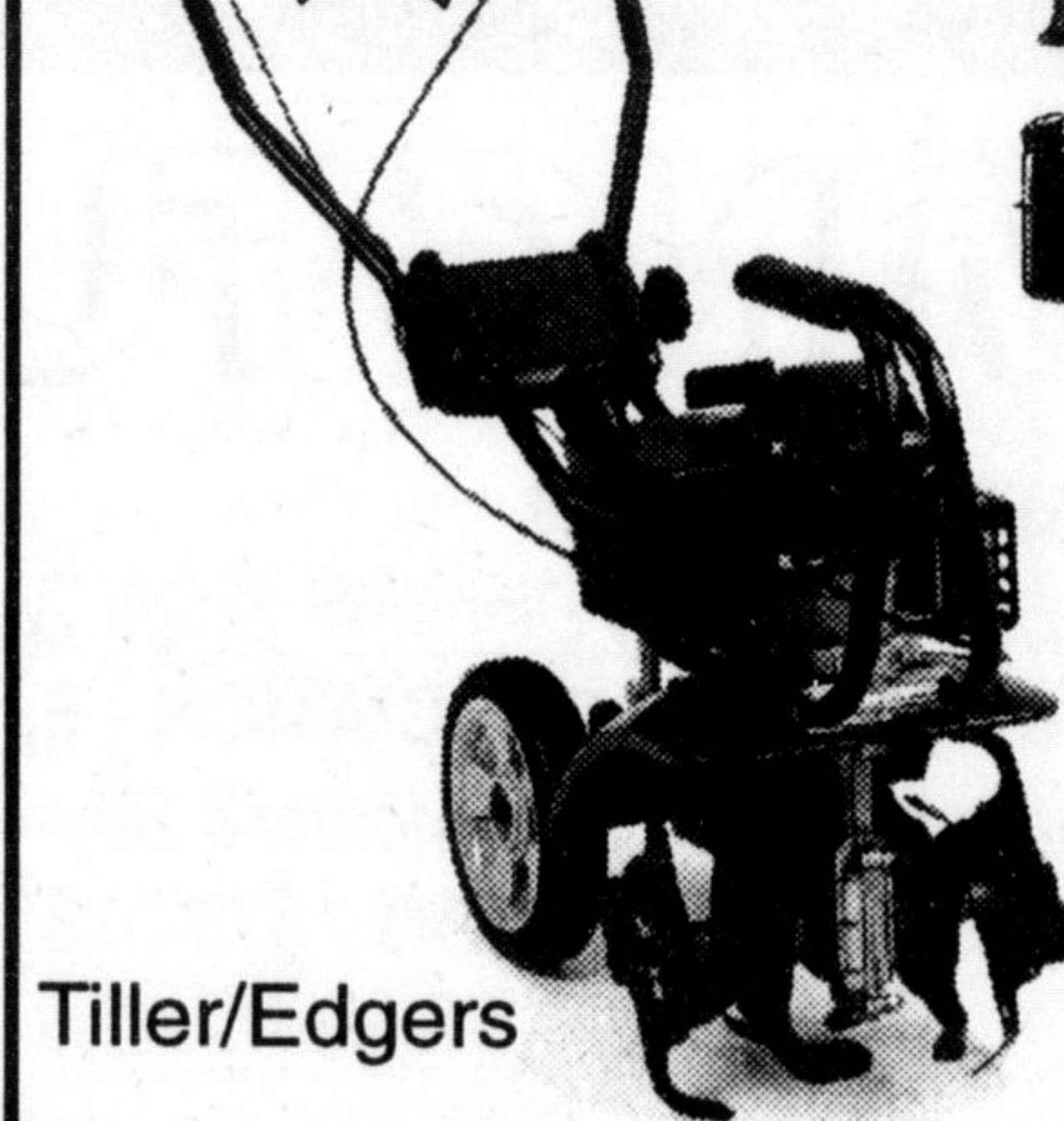
TROY-BILT

ALWAYS THE BEST BUILT. NOW THE BEST BUY.

Spring Is Here, and now is the time to prepare for your best garden ever!

TWO GREAT LAWN & GARDENING TOOLS IN ONE

FINANCING AVAILABLE



Tiller/Edgers



Tiller

COME SEE OUR COMPLETE LINE OF TILLERS

MILTON Small ENGINES

390 Ontario St. Unit #8, Milton

S.W. Corner of Steeles & Hwy. 25 behind Brian's Auto

"Your Lawn & Garden Headquarters" 878-0004



HALTON OPEN HOUSE

April 23 - 24th CUSTOMER APPRECIATION

Ride & Drive Both Days

Friday - 11 a.m. - 7 p.m.
Saturday - 9 a.m. - 3 p.m.

SPECIAL On-Site Discounts



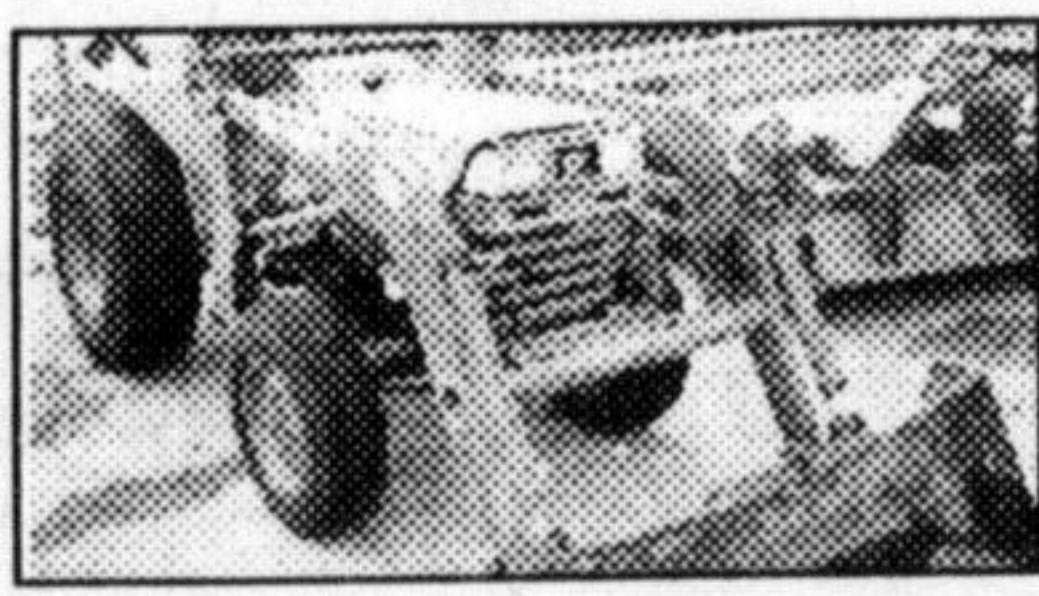
RIDE &



DRIVE



NOW!



Kubota L2550 4wd, loader, turf, ROPS



Cushman 4wd, diesel, 60" deck



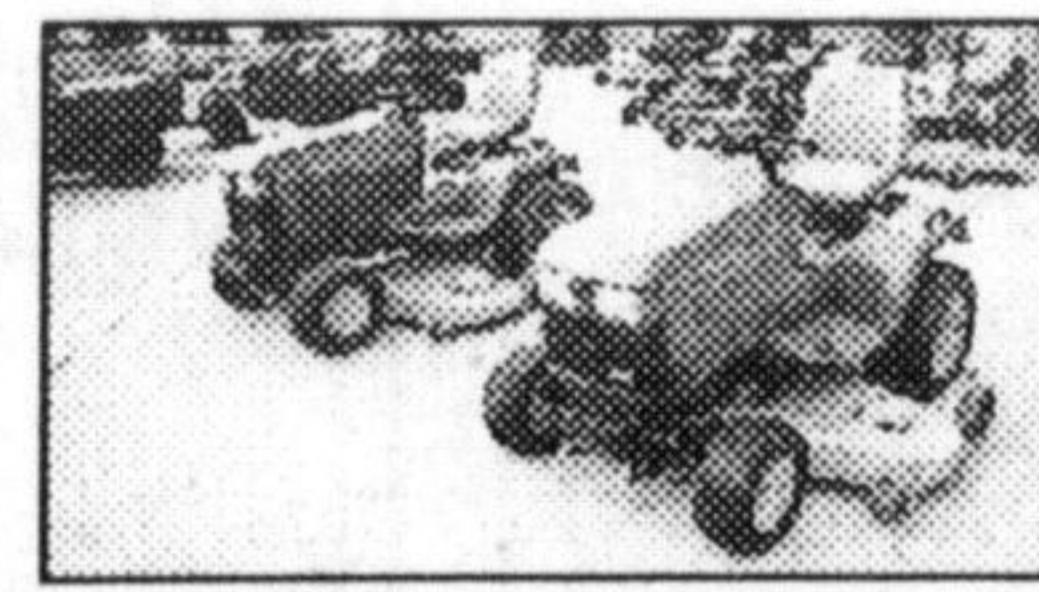
JD425 4wd, dsl., w/front brush unit



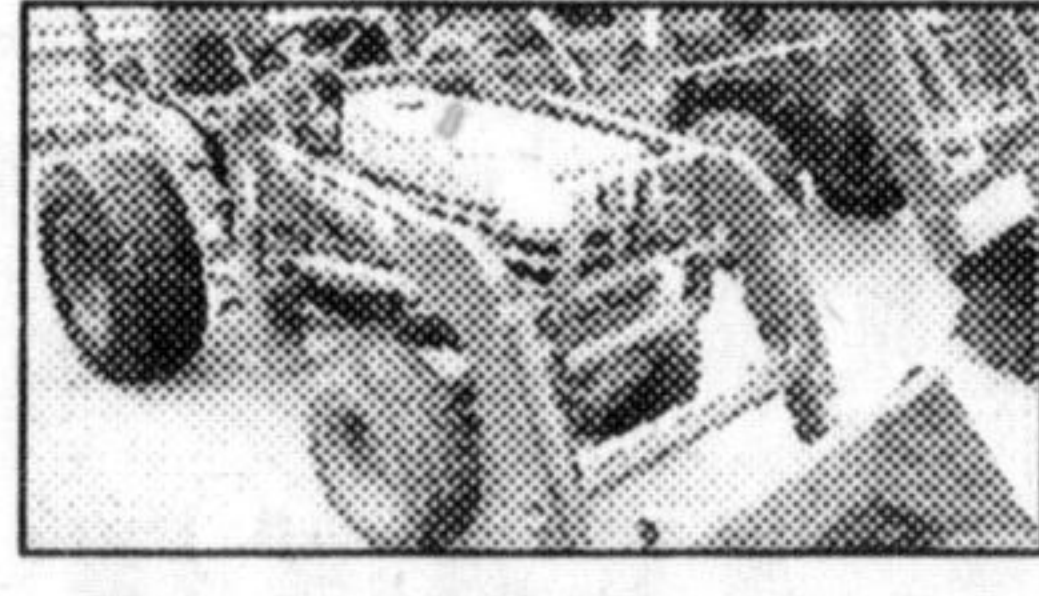
Kubota F2560 low hours, 60" deck



Thomas T133 skid steer



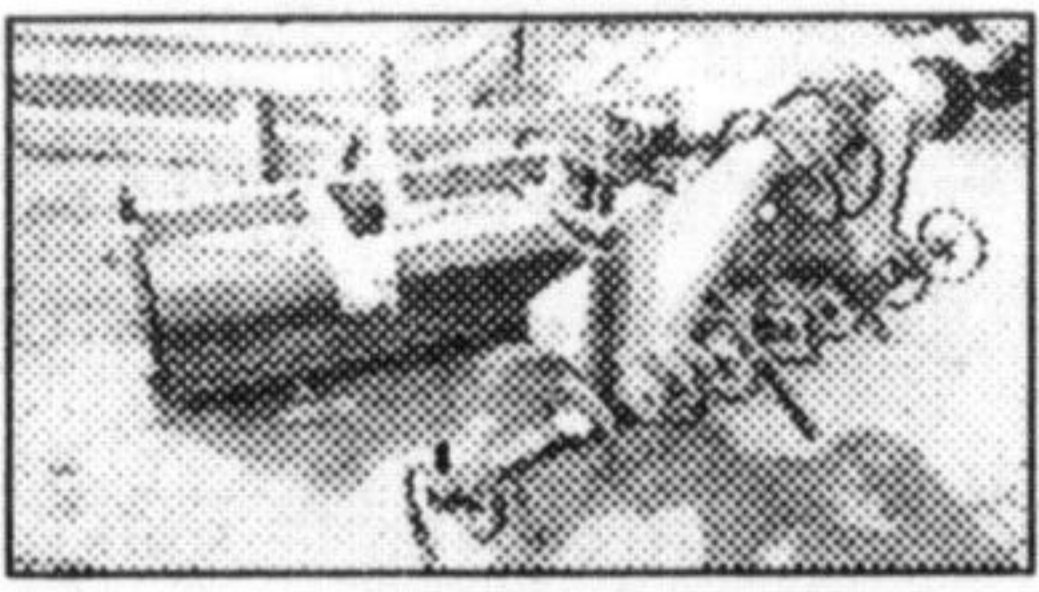
JD455 2 to choose from, 60" deck



Kubota B-2400 4wd, turf, w/loader



Chetech Grounds Trucks - 1500 & 2000 carrying cap.



Golf Course Grounds Leveller

Monday Night AUCTION of New & Used LAWN TRACTORS

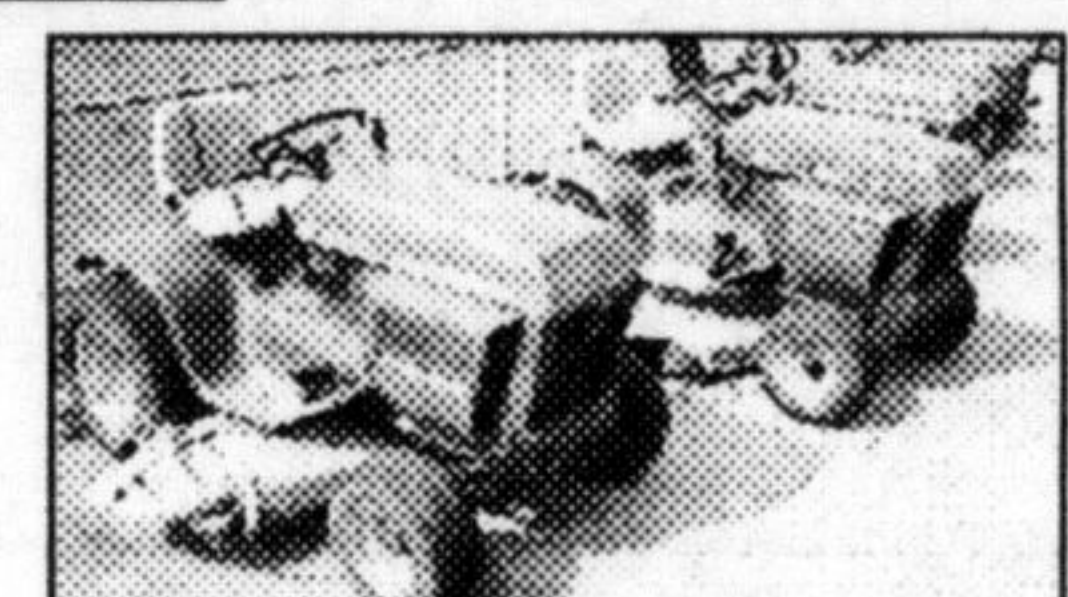
Monday, April 19th Starting 6 p.m. Sharp

OVER 50 RIDE-ON & PUSH TYPE MOWERS - Plus Parts

Accessories & More, Some NEW - Old Stock

Most Items - NO RESERVE
Small Reserve on Selected Items

This is your chance to **SAVE** at Auction



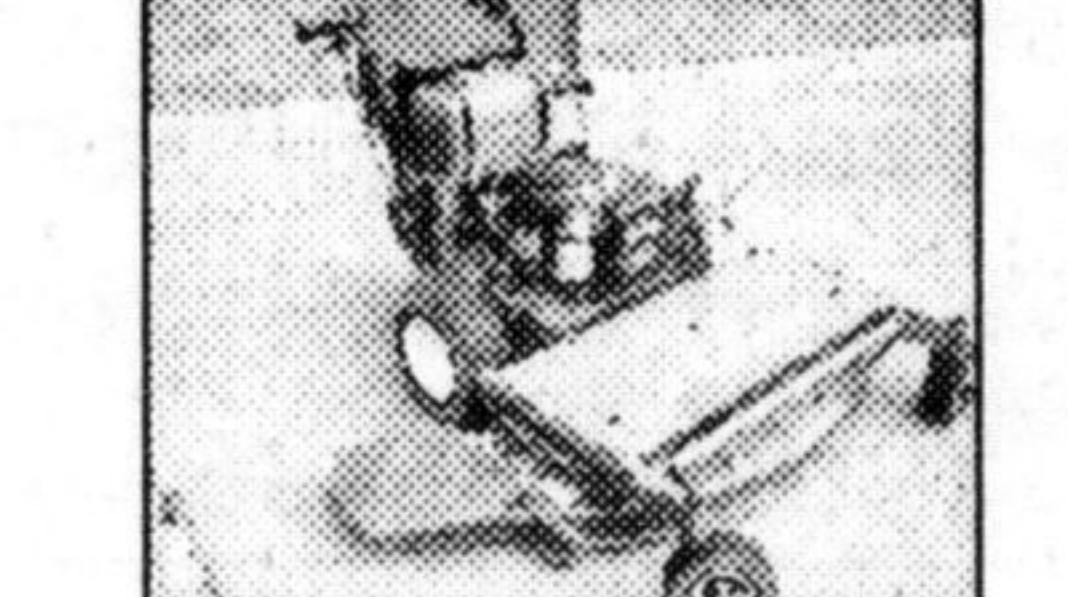
ON AUCTION



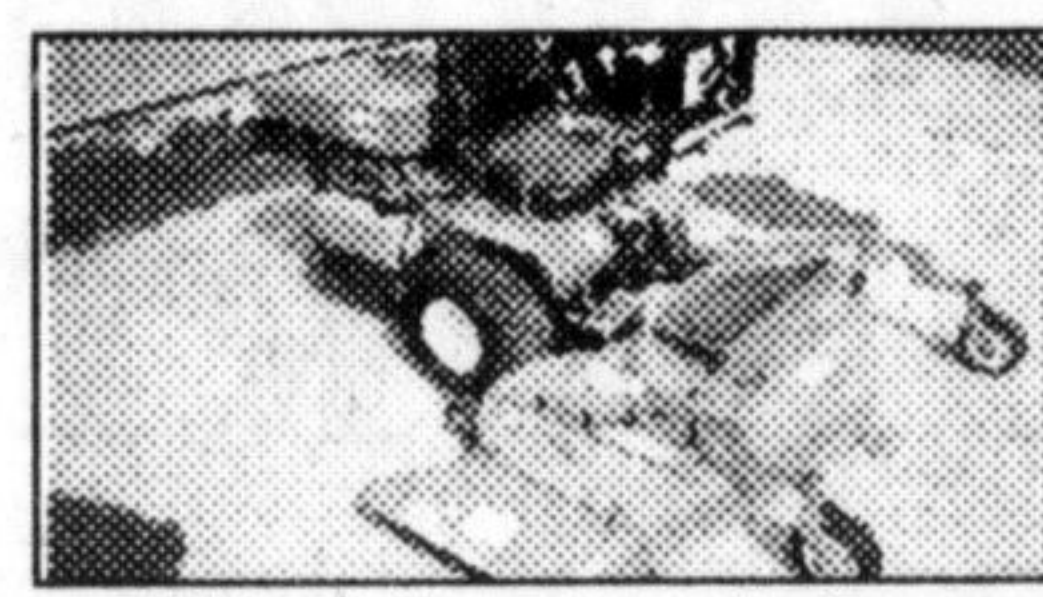
ON AUCTION



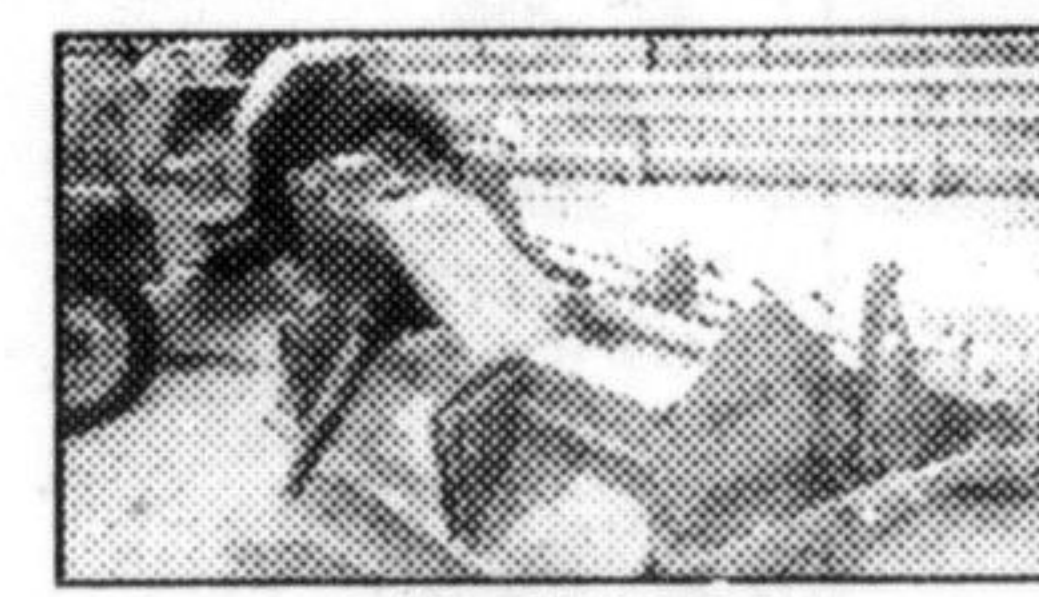
ON AUCTION



ON AUCTION



NEW Walker side discharge SAVE THOUSANDS!



BLE CAVATOR NEW Grounds Prep



Comm. Mowers in stock incl JD1145 60" deck @ last year's SPECIAL PRICE

OVER 200 NEW AND USED ITEMS: WE'RE DEALING IN APRIL...

Only at **TOUGH Kubota STUFF**

HALTON Grounds Care Equipment

Easy to reach on Hwy. 401 & James Snow Parkway
1589 Steeles Ave. E., Milton, Ont. L9T 2X8

(905) 878-2121

