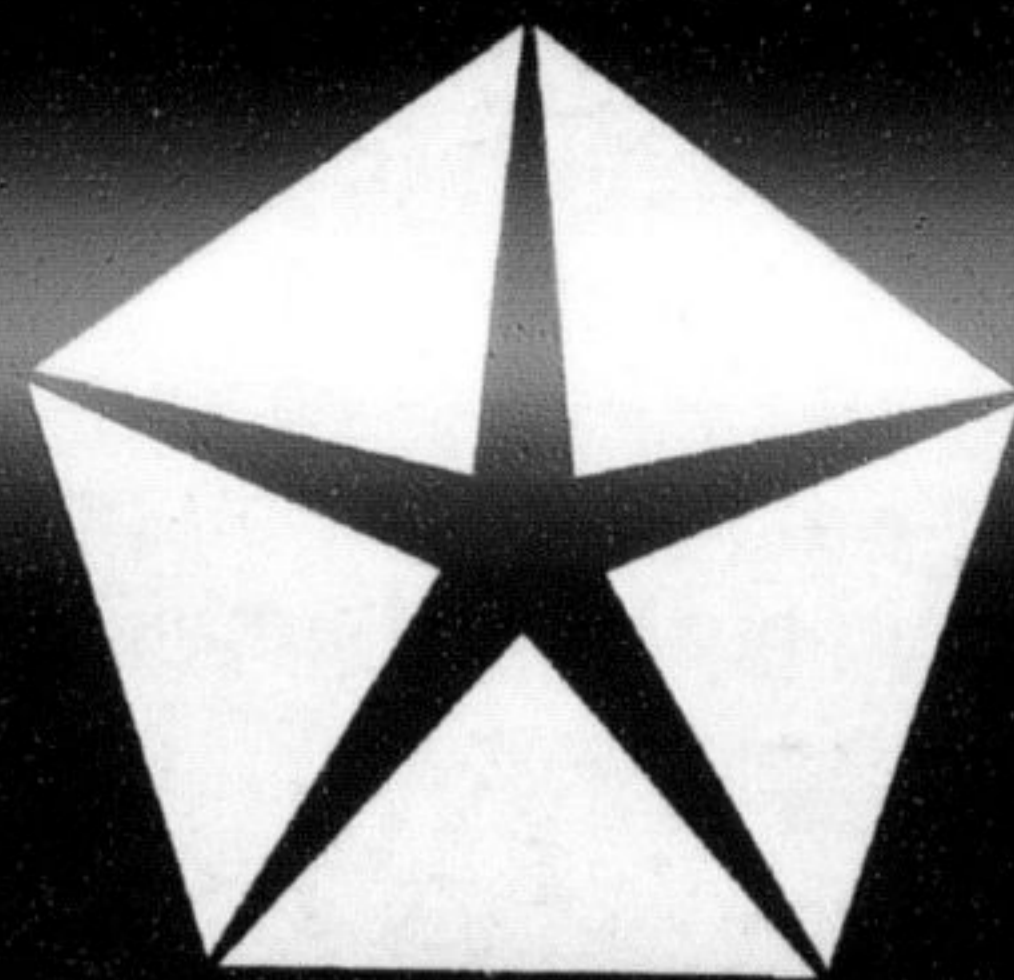


MILTON CHRYSLER SELLS SATISFACTION

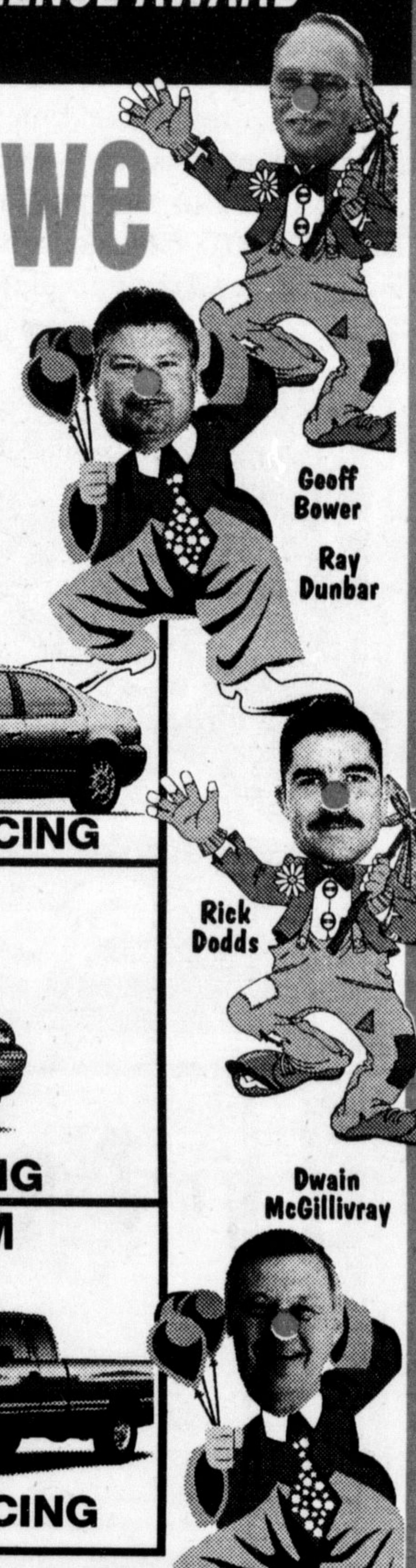
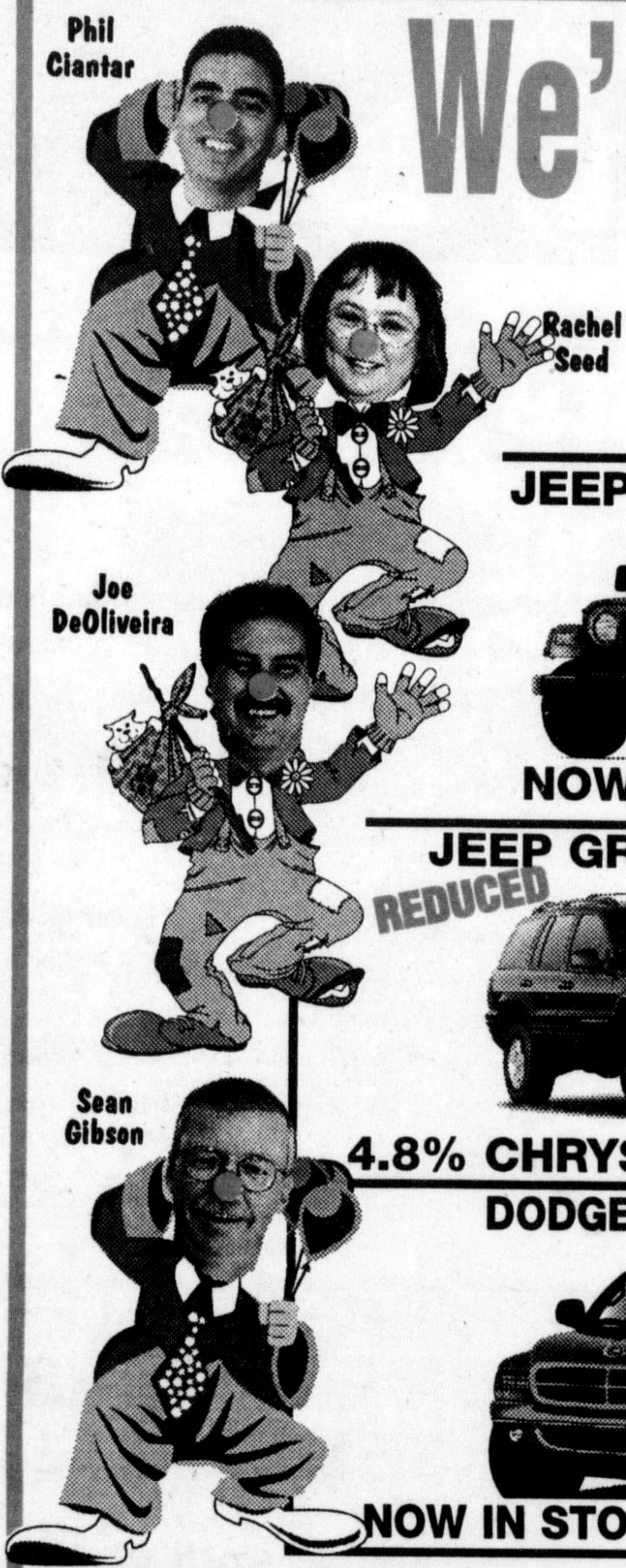
"A DEALER OF EXCELLENCE"



1998 - SERVICE EXCELLENCE AWARD

1998 - PARTS EXCELLENCE AWARD

We're not **CLOWNING AROUND** when we say **"OUR DEALS ARE GREAT!"**



JEEP TJ W/SOFT TOPS



NOW IN STOCK!

CHRYSLER SEBRING CONVERTIBLE



NOW IN STOCK!

CHRYSLER INTREPID & CIRRUS



1.8% CHRYSLER FINANCING

JEEP GRAND CHEROKEE

REDUCED



6 Cylinder Model.

4.8% CHRYSLER FINANCING

DODGE CARAVAN & GRAND CARAVAN



1.8% CHRYSLER FINANCING

DODGE STRATUS

REDUCED



0% CHRYSLER FINANCING

DODGE DURANGO



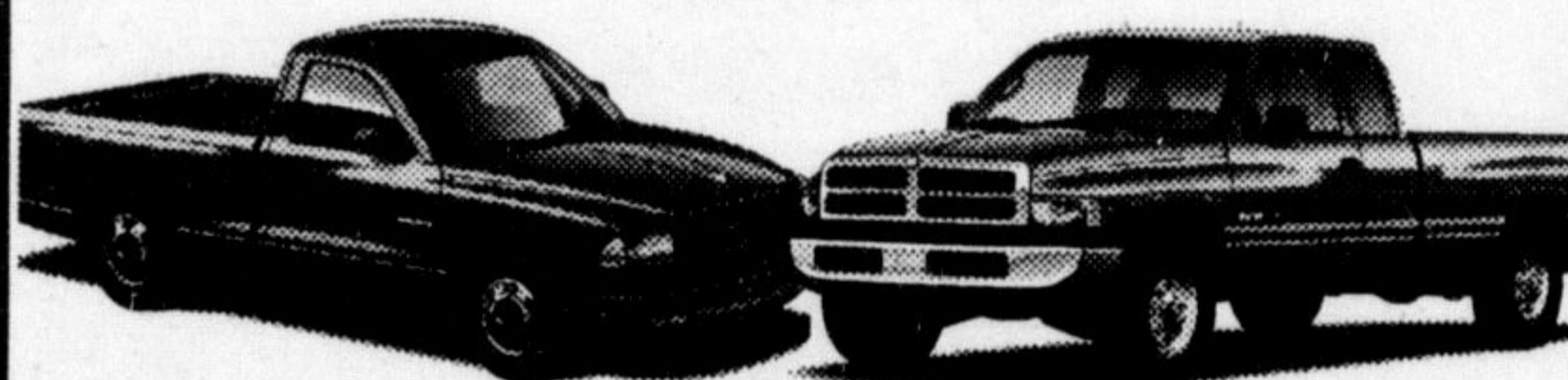
NOW IN STOCK - JUST ARRIVED

CHRYSLER NEON 2000



NO DOWN PAYMENT FROM \$269⁰⁰/MO. 48 mths

DODGE DAKOTA & RAM



2.8% CHRYSLER FINANCING

TOP DOLLAR FOR YOUR TRADE-IN

SPECIAL NO LIMIT FINANCE RATE 7.75% FOR EVERY VEHICLE SHOWN

NO REASONABLE OFFER REFUSED!!

 '97 DODGE RAM 1500 ST St# 221848 \$19,995[†]	 '96 RAM SLT 4X4 St# 561245 \$24,995[†]	 '98 GRAND VOYAGER St# 544598 \$22,998[†]	 '98 GRAND VOYAGER SE St# 813962 \$24,488[†]	 '98 GRAND VOYAGER SE St# 759318 \$24,488[†]
 '96 GRAND CHEROKEE LAREDO St# 382747 \$24,995[†]	 '96 GR CHEROKEE LIMITED St# 369443 \$28,995[†]	 '96 GRAND CARAVAN SE St# 207802 \$18,499[†]	 '95 VOYAGER SE St# 286175 \$11,495[†]	 '98 CHRYSLER INTREPID St# 205904 \$19,999[†]
 '96 CHRYSLER TOWN & COUNTRY LXI St# 464660 \$27,995[†]	 '96 CHRYSLER TOWN & COUNTRY St# 466236 \$27,495[†]	 '96 CARAVAN St# 716434 \$15,388[†]	 '98 CHEVROLET CAVALIER St# 113645 \$14,445[†]	 '97 PLYMOUTH BREEZE St# 594882 \$13,488[†]
 '97 CHEVROLET CAVALIER St# 156535 \$12,322[†]	 '97 PONTIAC SUNFIRE St# 858045 \$13,298[†]	 '97 PLYMOUTH NEON St# 248920 \$10,888[†]	 '96 DODGE STRATUS ES St# 292493 \$14,494[†]	 '95 CHRYSLER NEW YORKER St# 578511 \$15,495[†]

[†]Sales price plus admin. fee, applicable taxes & licensing.
^{*}Special Finance rates are available in lieu of RDA Discounts and Special Lease rate. 48-month lease requires on delivery, freight, \$675, admin fee, all applicable taxes, licence fee and security deposit. Mileage allowance 25,200 km per year; excess mileage charge is 8¢ per km over. Buy back is optional. See dealer for details.
^{**}Special Finance rates are available in lieu of RDA Discounts and Special Lease Rates. Not applicable to Dakota STD cab 2 WD & 4 WD, Ram V10 or Diesel, OAC.

A DEALER OF EXCELLENCE!

878-8877

Email: miltonchrysler@hotmail.com



81 ONTARIO ST. N. MILTON

