

CASHWAY
BUILDING CENTRES

MANAGER'S MADNESS SALE

DEMO
Sat. April 10th
10 am
SPACEMAKER
SHED

Special Purchase
Spacemaker
8' x 7'
Metal Shed
Gable Roof/Siding
Off White with Green Trim

Watch it Happen



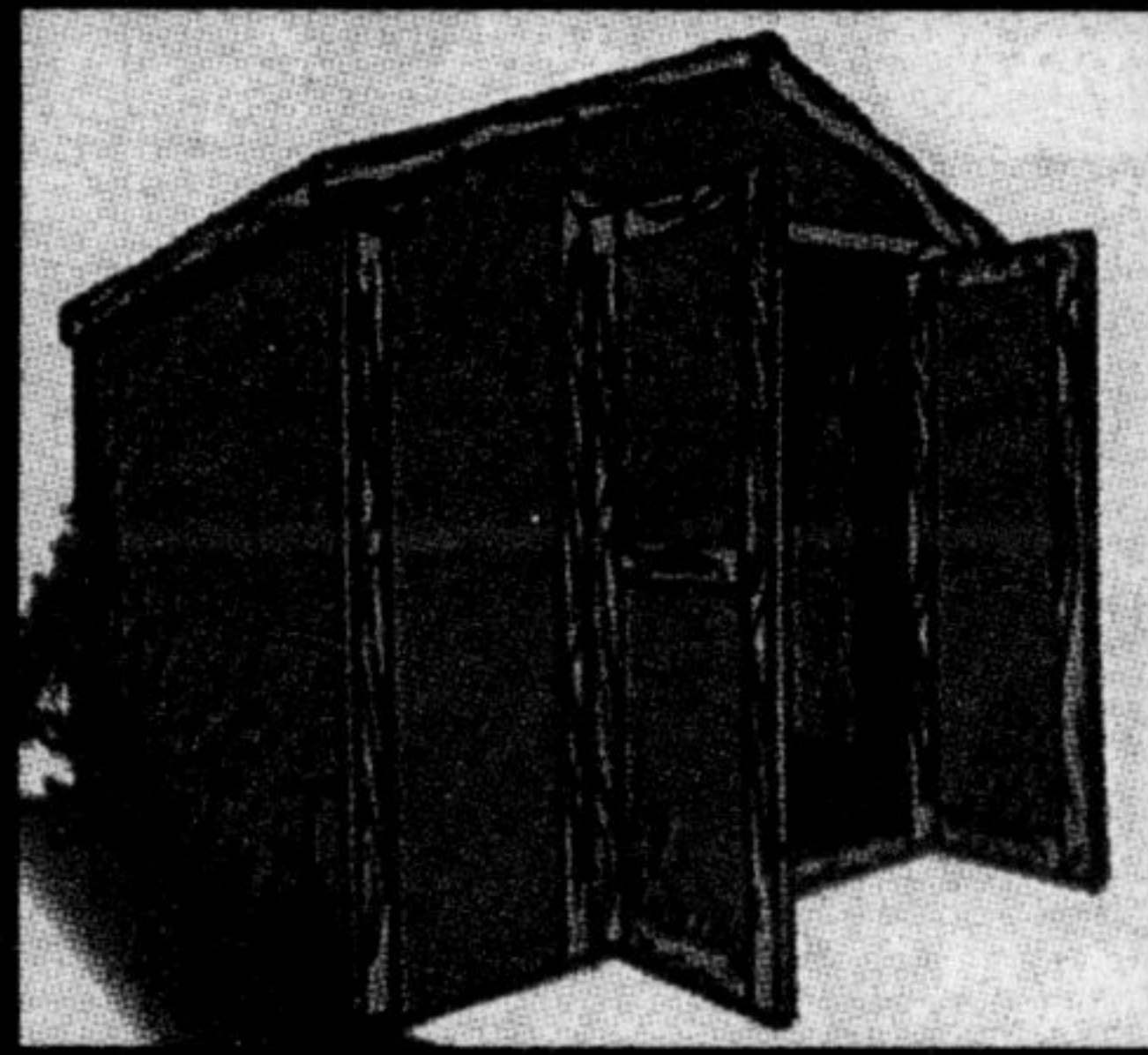
Hot! Below Cost

\$299⁰⁰

Limited Quantities, No Rainchecks

MODEL #VS87

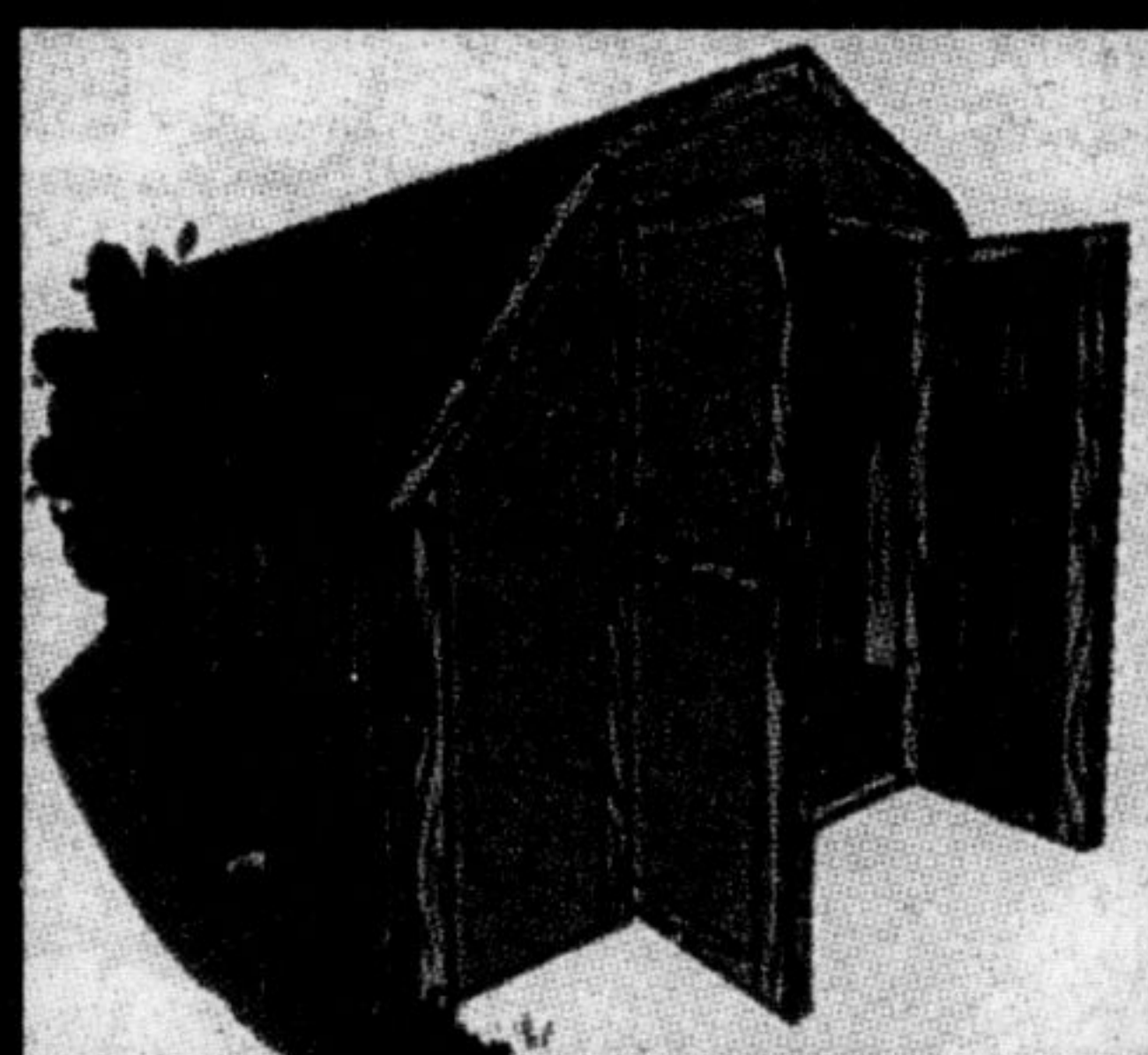
ALL PURPOSE GARDEN/STORAGE SHEDS
(PRE-ASSEMBLED FRAMES CUTTING & ASSEMBLY REQUIRED)



Gable Style (7 sizes)
6' x 8' Shed package 504-01009

\$375⁰⁰

Available - 8'x8', 8'x10', 8'x12'
10'x8', 10'x10', 10'x12'



Mini Barn (6 sizes)
8' x 8' Shed package 504-01413

\$429⁰⁰

Available - 8'x10', 8'x12'
10'x8', 10'x10', 10'x12'

SEE STORE FOR PRICING AND UPGRADES

MANAGER'S MADNESS SALE

EXCEPTIONAL BUY!

4.97 Save 1.22
Sq. Yd. Sq. Yd.

Belair 6'
Indoor/Outdoor Turf

Beige/Brown/Emerald Green
302-10306, 302-10322

DO A 10'X12' AREA FOR ONLY \$66.25

THAT'S ONLY \$55^{sq. ft.}

CASHWAY
BUILDING CENTRES

7:30 AM-8PM MON.-FRI.
8 AM-6PM SATURDAY
10 AM-5 PM SUNDAY

700 MAIN ST. E. MILTON 878-8171

April is Cancer Month

Please give generously when your canvasser comes to your door.

With your help "Cancer can be beaten"

CANADIAN CANCER SOCIETY SOCIÉTÉ CANADIENNE DU CANCER

Emergency department shot in arm for Oakville

By IRENE GENTLE
The Champion

Following approval of a \$17.5 million capital budget, Halton Healthcare Services (HHS) is ready to roll on a \$9 million Oakville emergency department restructuring project.

HHS operates the newly-amalgamated Milton District and Oakville Trafalgar Memorial hospitals.

The Oakville Trafalgar emergency department revamp is the largest of a series of projects set to go following the

approval of the 1999-2000 capital budget by the HHS board of directors recently.

The budget is divided into three main components; capital projects, renovations and return on investment projects.

Weighing in at \$11.7 million, renovation projects directed by the Health Services Restructuring Committee bite off the largest chunk of the budget.

These projects were identified after an investigation by consultants revealed that OTMH is not equipped to handle upcoming growth in the area.

Though the emergency department makeover polishes off the lion's share of the renovations budget, a \$500,000 39 bed rehabilitation unit is also on the to do list.

Reconstruction of the hospital's histology unit swallows another \$200,000, while \$720,000 has been designated for mental health services.

Capping the renovations is a new \$1 million Women's Diagnostic Centre. The centre will focus on providing services in areas such as mammography and ultrasound.

The Ministry of Health is expected to bankroll half that project.

In all, the Ministry is expected to shell out \$7.9 million of the total \$11.7 million renovation price tag.

In the area of equipment and capital projects, about \$1.38 million of the \$5.1 million budget is slated for Oakville projects. Milton's share is \$416,000.

The Milton portion will purchase the construction of a new patient washroom and a \$66,000 film digitizer, among other projects.

OPEN HOUSE SAT. & SUN. 1-4

8851 SIXTH LINE \$469,000

- Over 9 acres • Large 4 level split
- Solarium addition • Large barn 36'x26'
- water/electricity • Far too much to mention
- Come and see! (north of Steeles, s. of 5th Side Rd.)

Patricia Scheben
Sales Representative
RE/MAX aboutourne REALTY CORP. 842-7000

LAKESHORE PLACE
RETIREMENT RESIDENCE

LOCATED ON LAKE ONTARIO WATERFRONT

LAKESHORE PLACE IS BURLINGTON'S NEWEST AND MOST COMPLETE RETIREMENT RESIDENCE. SENIORS IN BURLINGTON NOW HAVE MORE CHOICE OF ACCOMMODATION, MORE CHOICE OF SERVICES, AND MORE CHOICE IN MAKING THEIR QUALITY OF LIFE THE BEST IT CAN BE!

- Full service residence includes meals, housekeeping and laundry
- Private suites with ensuite bath
- Variety of suites with views of the lake
- Individually controlled heat & air conditioning
- Ensuite kitchenettes
- Nursing staff on duty 24 hours a day
- Emergency call bell system
- Library, Hair Care Studio, Tuck Shop

Featuring our two Assisted Living Centres to meet the needs of those individuals with physical or cognitive challenges, including Alzheimer's

CONTACT TRACEY RYAN OR MARGARET BRIMACOMBE AT **(905) 333-0009**

TOURS AVAILABLE DAILY AND BY APPOINTMENT SAT OR SUN 12-5 PM

Managed with pride by Caregard

5314 LAKESHORE RD. BURLINGTON ONTARIO

ORCA ONTARIO RESIDENTIAL CARE ASSOCIATION