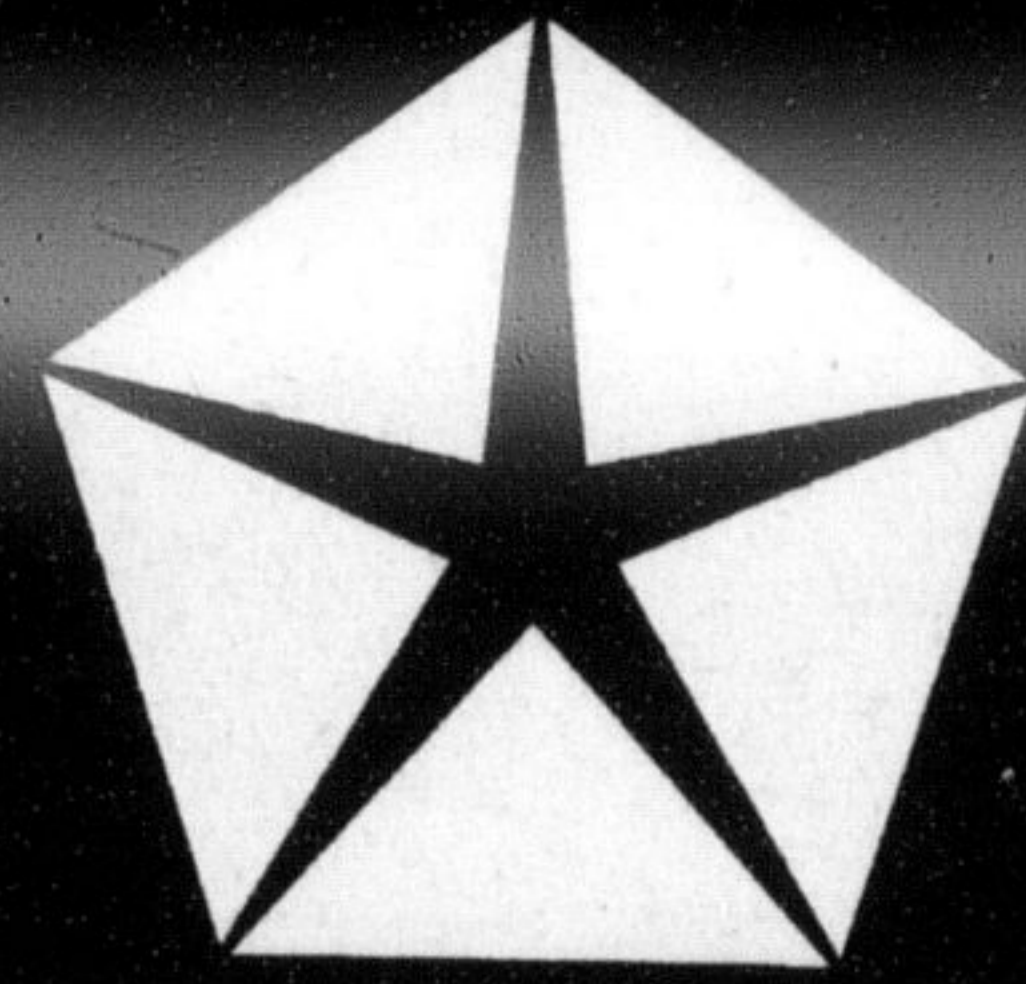


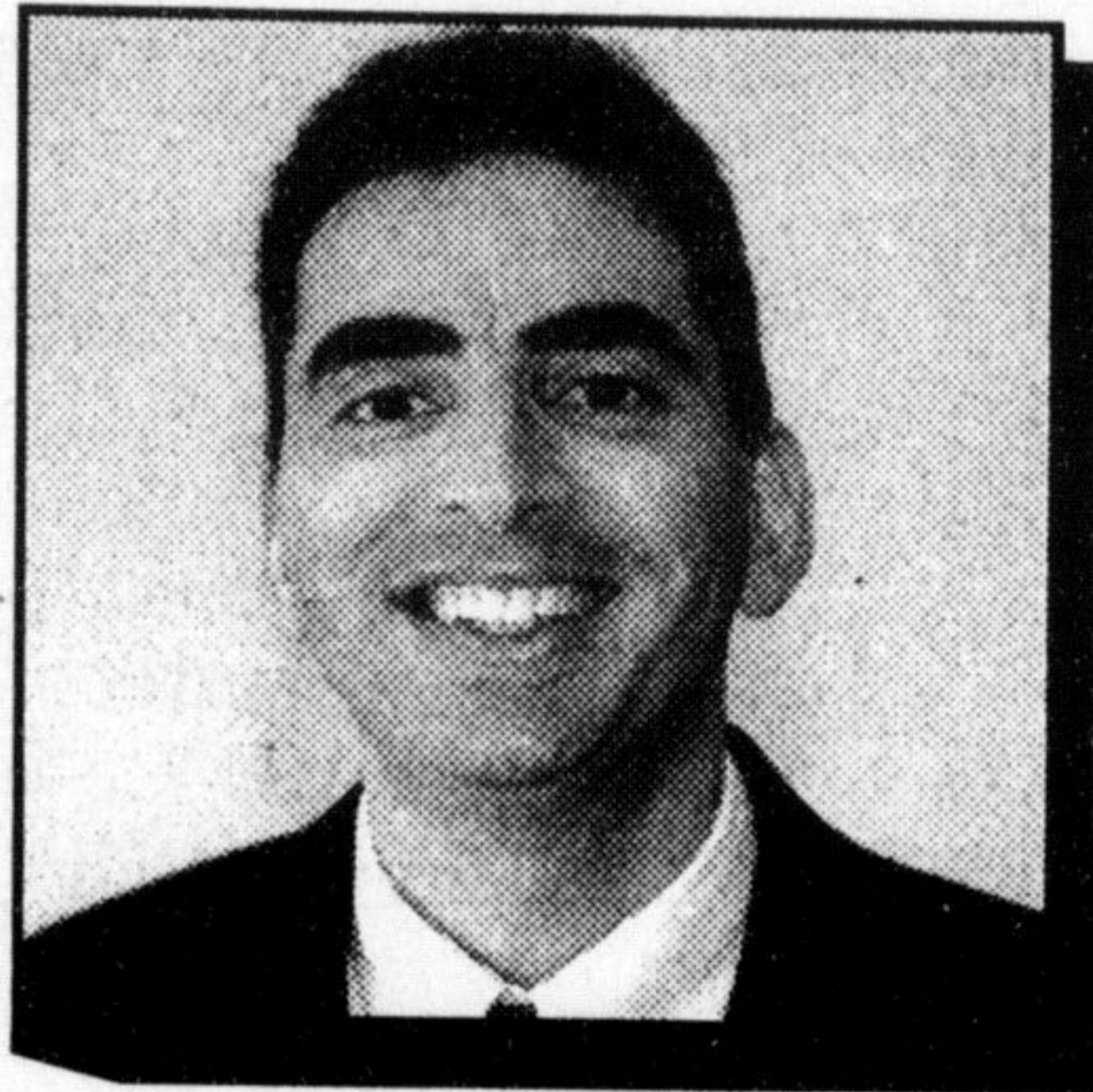
**MILTON CHRYSLER
SELLS
SATISFACTION**

"A DEALER OF EXCELLENCE"



1998 - SERVICE EXCELLENCE AWARD

1998 - PARTS EXCELLENCE AWARD



"THANK YOU"

It is with our deepest gratitude that we thank all of our customers for making this past March our Most Successful month, in Automotive Sales, in our history.

Our Staff truly appreciates your loyalty over the past 36 years and we hope we've proven it to you by continuing to offer the very best in service, sales and value.

Once again, on behalf of our entire staff we would like to say, thank you.

Sincerely
Phil Ciantar
General Manager

BUT WAIT!!!

We want our Sales Momentum to continue ... As you can see we are Bulking Up Our Discounts on our New Spring Arrivals & Your Old Favourites.

	<p>Jeep TJ W/Soft Tops</p> <p>NOW IN STOCK!</p>	<p>Chrysler Sebring Convertible</p> <p>NOW IN STOCK!</p>	<p>Chrysler Intrepid + Concorde</p> <p>2.8%† CHRYSLER FINANCING</p>	
	<p>Jeep Grand Cherokee</p> <p>GREAT SELECTION IN STOCK</p>	<p>Dodge Caravan & Grand Caravan</p> <p>1.8%† CHRYSLER FINANCING</p>	<p>Chrysler Cirrus & Dodge Stratus</p> <p>2.8%† CHRYSLER FINANCING</p>	
	<p>Dodge Durango</p> <p>NOW IN STOCK - JUST ARRIVED</p>	<p>Chrysler Neon 2000</p> <p>NO DOWN PAYMENT FROM \$269⁰⁰*/MO. 48 mths</p>	<p>Dodge Dakota & Ram</p> <p>2.8%† CHRYSLER FINANCING</p>	

* Special Finance rates are available in lieu of RDA Discounts and Special Lease rate. 48-month lease requires on delivery, freight, \$675, admin fee, all applicable taxes, licence fee and security deposit. Mileage allowance 25,200 km per year; excess mileage charge is 8¢ per km over. Buy back is optional. See dealer for details.
† Special Finance rates are available in lieu of RDA Discounts and Special Lease Rates. Not applicable to Dakota STD cab 2 WD, Ram V10 or Diesel, OAC.

**A DEALER
OF EXCELLENCE!**

878-8877

Email: miltonchrysler@hotmail.com



81 ONTARIO ST. N. MILTON

