

Hunt

Plymouth Chrysler Jeep
 • 500 Bronte Street, Milton • 905-876-2580 •



Sales
 Department:
 Mon. to Thurs. 9-8
 Fri. 9-6 Sat. 9-5

		401	
Steeles Ave	Hwy 25		
	Bronte St	Main St	
HUNT	Derry Road		
		Hwy 25	



Ask about
 our LEASE
 SPECIALS!

USED CAR SPECIALS

	SALE PRICE		SALE PRICE
1998 Plymouth Neon, 4 dr, red, 21,000 km	\$11,995	1996 Chrysler Intrepid, 4 dr, red, 87,000 km	\$14,995
1998 Dodge Neon, 4 dr, white, 21,000 km	\$11,995	1996 Dodge Caravan, wagon, red, 60,000 km	\$14,995
1998 Dodge Stratus, 4 dr, gold, 26,000 km	\$14,995	1995 Plymouth Voyager SE, wagon, green, 86,000 km	\$13,995
1998 Dodge Stratus, 4 dr, red, 20,000 km	\$15,995	1995 Dodge Neon Sport, 4 dr, red	\$5,995
1998 Dodge Stratus, 4 dr, gold, 26,000 km	\$15,995	1994 Dodge 2500 4x4 SLT Diesel, pick-up, red,	\$16,995
1996 Dodge Caravan, wagon, green, 59,000 km	\$14,995		



CARAVAN

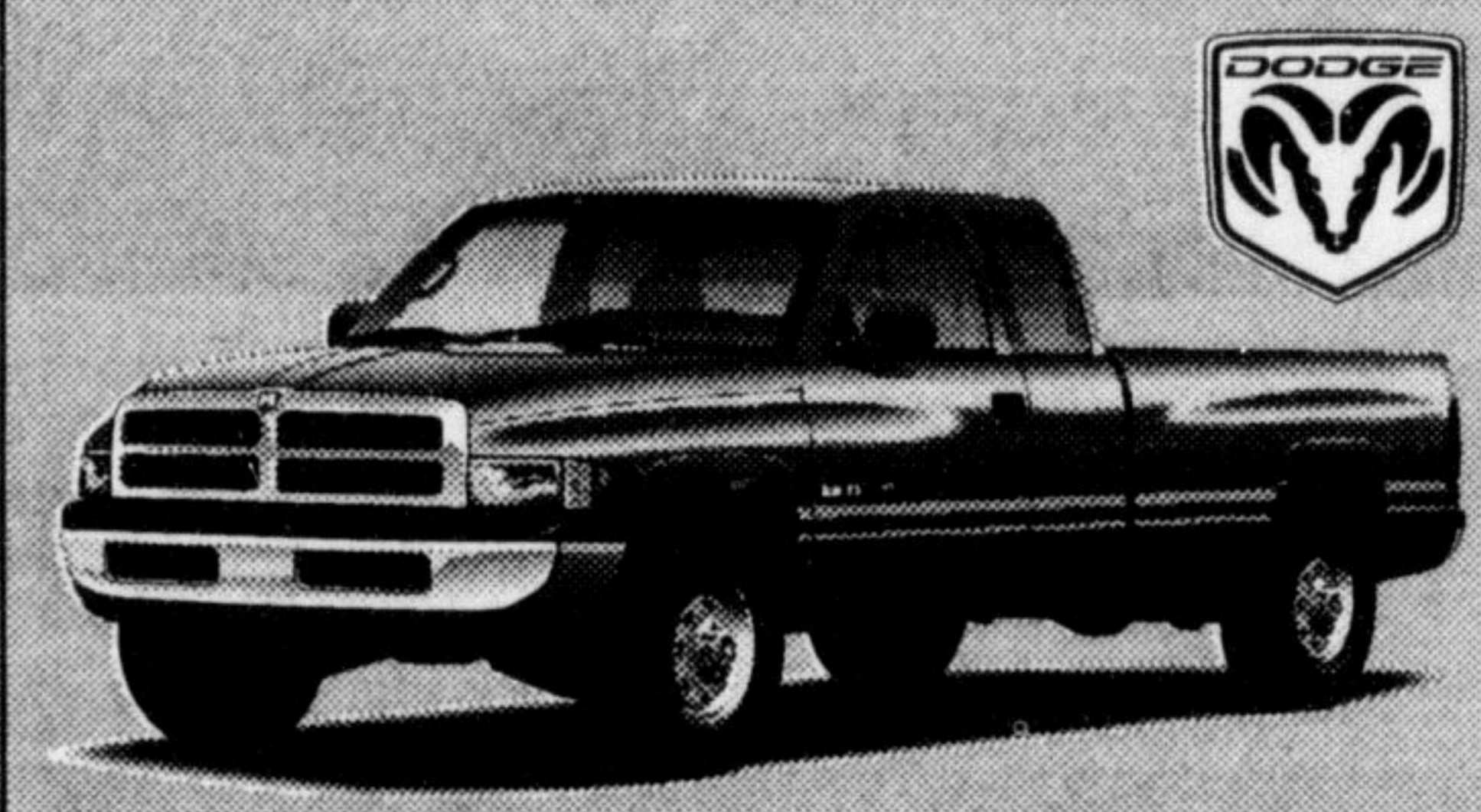


Voyager



DAKOTA

Come and see the
 ALL NEW...
neon
2000



300

1999



BREEZE

CARS
 CARS
 CARS

'99 NEON SALE IS HERE!

0%
 On February 6, Chrysler Canada launched its biggest national Neon promotion ever. With three great reasons to buy, there's never been a better time to clear out our '99 Neon inventory.

- 0% APR** on purchase of 1999 Neon. 48 months '99
- RDA/Dealer Cash** \$1000 on '99 Models (Retail Delivery Allowance)
- 1.9% Lease Financing** Available exclusively through Chrysler Gold Key Leasing on '99 Models.

CARS
 CARS
 CARS



LHS



CIRRUS



INTREPID

- | | | | | | | | | | | | | | | | | | | | | | | |
|---------------|----------------------------|----------------------------|----------------------------|------------------|------------|-----------------------|---------------|----------------------|-----------------|--------------|------------------|-----------------|------------------------|------------------------|-----------------|--------------------|--------------------|--------------------|--------------------|--------------------|--------------------|--------------------|
| | | | | | | | | | | | | | | | | | | | | | | |
| Sales Manager | Sales & Leasing Consultant | Sales & Leasing Consultant | Sales & Leasing Consultant | Business Manager | Accountant | Ass't. Office Manager | Parts Manager | Ass't. Parts Manager | Parts Assistant | Parts Driver | Detailer Manager | Service Manager | Ass't. Service Manager | Ass't. Service Manager | Service Advisor | Service Technician | Service Technician | Service Technician | Service Technician | Service Technician | Service Technician | Service Technician |

CHRYSLER
FIVE STAR SERVICE
 ★★★★★



Winterize
 Your Car Now!
 Special In House
 Pricing

EVERYDAY
SERVICE & PARTS SPECIALS
INCLUDING SATURDAYS

Service & Parts Hours Extended
 Monday8-5 pm
 Tuesday8-8 pm
 Wed/Thur/Fri8-5 pm
 Sat8-12 noon
 To better serve our customers' needs