

Dateline

Dateline is a free listing of coming events only. The column is available to local community groups to assist in promoting their future events. Only charitable or non-profit community groups may use this service. We can only guarantee one issue of publicity closest to the date of the occurrence although more insertions are possible if demand is low.

Notices for Dateline should be handed in at the office of The Champion, 191 Main St. E., mailed to P.O. Box 248, Milton, Ont., L9T 4N9, or faxed to (905) 878-4943. The final deadline is noon Friday for Tuesday's edition and noon Wednesday for Friday's edition. Dateline items will not be accepted by telephone.

Tuesday Mar. 30

Recently separated? The Canadian Mental Health Association offers Seminars for the Separated, a 10-week lecture series and self-help support group for people going through separation and divorce. Guest speakers address topics including stages of separation, communication with your ex, parenting through and after separation, legal aspects of separation, rebuilding self-esteem and live after divorce. The group meets on Tuesdays until June 1 at Notre Dame High School in Burlington. The cost is \$70. Flexible payment plans are available. Call 693-4270 for information or to register.

The **Fine Arts Society of Milton** meets at the Halton Regional Police station on Childs Drive at 7:30 p.m. The guest speaker is artist Albert

Casson, who discusses the often confusing art world of limited editions, prints and reproductions. Admission is free. Everyone is welcome. Call 878-7397 for further information.

The **E.C. Drury High School Parent Council** holds an information night regarding changes to the Secondary School Program and how they affect the education system. Double the number of young people are predicted to graduate in September, 2003. The event takes place at the E.C. Drury High School auditorium at 7 p.m. For more information, contact the school at 878-0575, Liz Munro at 878-0815 or Linda Ricker at 876-1331.

The Halton Industry Education Council holds its first **Parents as Career Coaches Information Session**. The event gives parents options about how to help their children make

informed career decisions for the future. The session takes place from 7 to 9 p.m. at the Career Centre, 5230 South Service Rd., in Burlington. Speakers address questions, concerns and comments on career education in Halton. For more information, call the centre at 634-2575.

Tuesday Mar. 30 - 31

New Arthritis Pool Therapy Program sessions begin at the Milton Leisure Centre. Arthritis sufferers can benefit from the pool program held Tuesdays and Thursdays or Wednesdays and Fridays from 11 a.m. to noon. Sessions are six weeks in duration and are held year-round at the leisure centre, where exercise instruction approved by the Arthritis Society is conducted in warm water. People with

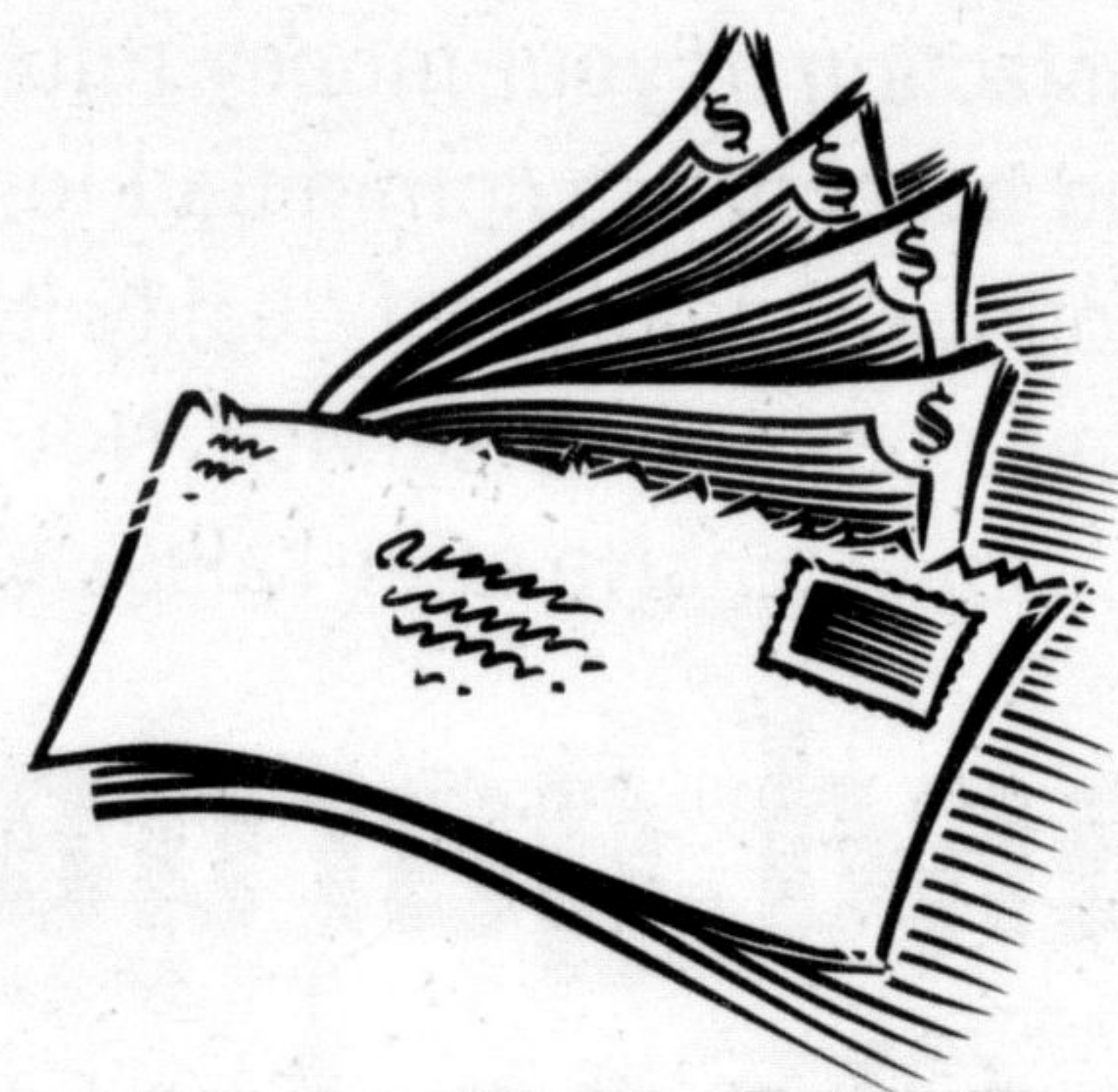
• see more **DATLINE** on page 19

BORROWING CAN BE THIS COMFORTABLE.

Return to spender.

3% CASHBACK.

That's what we give you when you give us your mortgage business.*



Introducing the 3% CashBack Mortgage. We think it's pretty catchy.

Get a residential mortgage with a competitive interest rate from Canada Trust. Then we'll deposit 3% of your mortgage principal, in cash, into your account upon closing. On a \$150,000 mortgage that's \$4,500 to use however you wish. And there's no upper limit.

Simple? Absolutely. Helpful?

We think so. And it's an offer supported, as always, by the Canada Trust tradition of knowledgeable, professional, personal service that walks you through the mortgage process step-by-step.

In an age of increasingly impersonal banking, it's reassuring to know that borrowing can be this comfortable.

The 3% CashBack Mortgage.  It's going to be a big hit.

CALL **1-800-818-2300**

VISIT A CANADA TRUST BRANCH OR CHECK OUT [WWW.CANADATRUST.COM](http://www.canadatrust.com)

 **Canada Trust**

*Some conditions apply, ask for details. Offer can be changed at any time, without notice.

Mishaps result from impatience

• from **FARM** on page 8

Also troublesome is the incorrect application of pesticides, he warned.

Much of the danger in the past has stemmed from confusion over measurements.

While many farmers were used to dealing with acres and gallons, the instructions on pesticides changed to litres and hectares.

"A lot of mistakes were being made," said Mr. Patterson. "Sometimes guys were laying it down eight times too heavy."

To solve that problem, many chemicals became unavailable to farmers without a special licence. The licence hinges upon passing a safety course and must be renewed every five years.

Another risk in these ozone-depleted times is skin cancer.

To prevent that, many tractors are outfitted with closed cabs and UV glass.

When not being threatened by poisonous gasses, chemicals, the sun and enormous farm equipment, many farmers also have to contend with the unpredictability of the animal world.

According to the CFA, accidents involving animals are the second leading cause of non-fatal farm injuries in Canada.

Even normally docile cows can have a nasty streak. "If she doesn't want to be milked, she'll kick the hell out of you," testified Mr. Patterson.

For the most part, farm accidents occur due to impatience, he said. "People think they're going to save three minutes by not turning off the engine."

For a free copy of the ASAP checklist, call 1-800-361-8855.

STARTS MAR. 22 **FABRICLAND** **STARTS MAR. 22**
CANADA'S LARGEST FASHION FABRIC DISTRIBUTOR

HOME DEC DAYS!

SAVE 20*-50% OFF OUR REG. PRICE

ON OUR ENTIRE STOCK OF REG. PRICED HOME DEC FABRICS, UPHOLSTERY, HARDWARE, NOTIONS & TRIMS

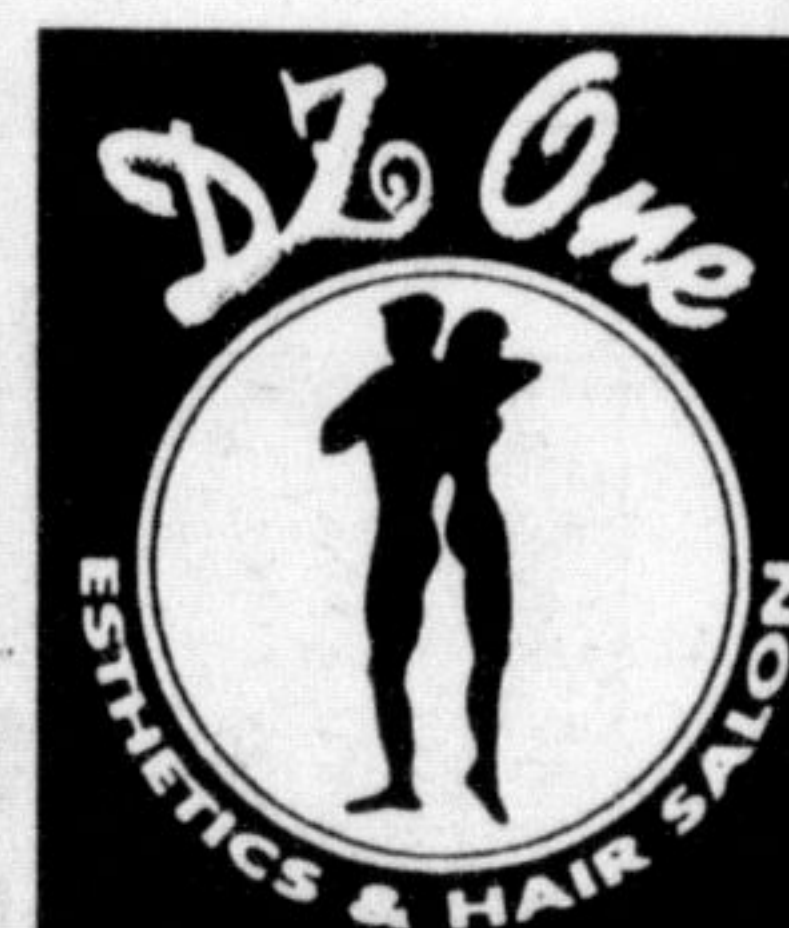
***Sewing Club Members save an extra 10% on all 20% Off items!**

ENTIRE IN-STORE STOCK!
BURDA PATTERNS
BUY 1 AT M.S.R. PRICE GET 1 FREE!
(of equal value or less) Offer valid March 22- April 3, 1999. Not valid with any other discount offers.

Sale in effect March 22-April 3/99 on in-stock merchandise, excluding promotional goods & ends. Sorry, no special orders. Look for the red sale tags. Where competitive pricing applies, discount will be off our regular chain-store price.

547 Main St. E. Milton 878-0931

Fax Dateline info to 878-4943 in plenty of time before the event



Facials \$40
\$48 reg.



84 Main St. E. Milton 876-3761