



Photo by GRAHAM PAINE

I can see clearly now

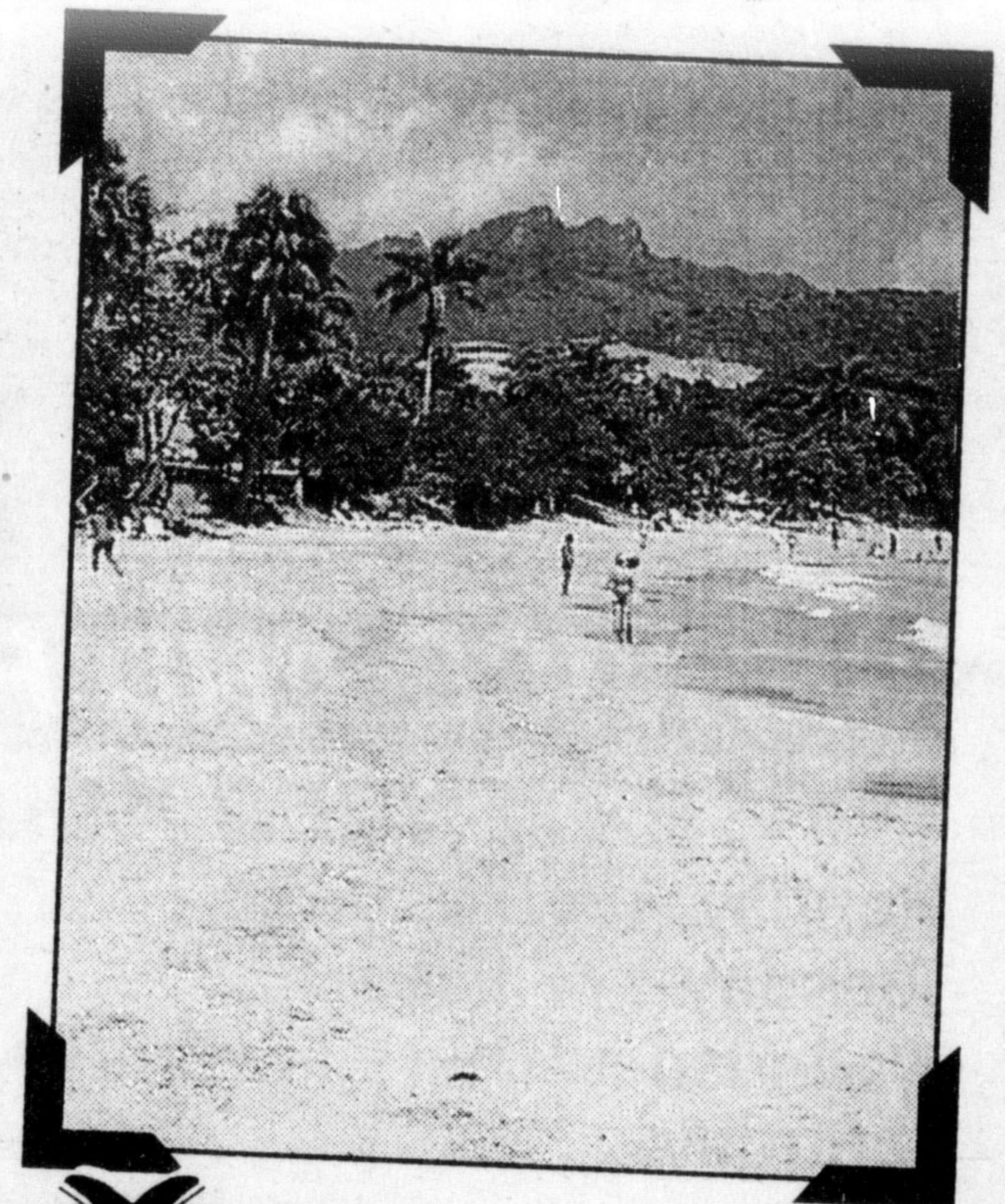
Bill Patterson of Patterson Home Improvements spruces up a vinyl awning window in preparation for setting up shop at the Spring Home Show. The event runs March 3-6 at the Milton Mall.

Picture Yourself Here...

**20 POUNDS
LIGHTER
IN 10 WEEKS
GUARANTEED!**

*Call for a
Free Consultation*

**Weight
Management
\$11.00** per week
Excludes product.
Based on full
program.



BEVERLY HILLS™

*Weight Management &
Nutrition Centres*

PERSONALIZED WEIGHT MANAGEMENT

550 Ontario St. S. Unit 18 875-2889

RETIREMENT LIVING in the heart of Milton



Your interest and needs are changing. You would prefer to spend more time on things that interest you. You want the companionship of good friends and neighbours and fewer worries about security. You want privacy plus peace of mind in knowing that someone who cares is close by.

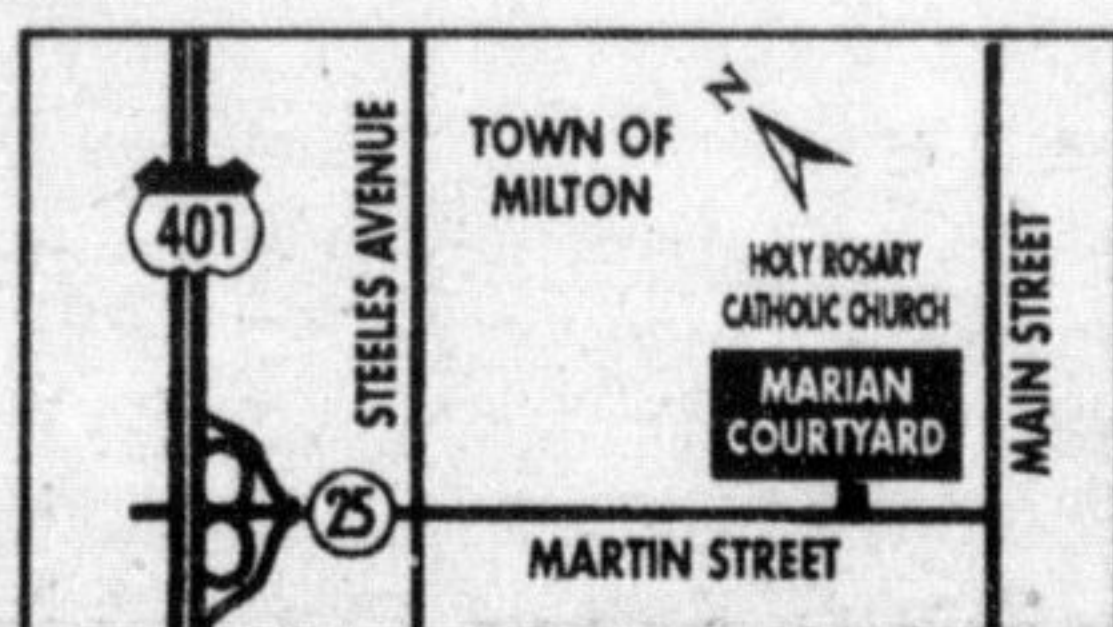
The Marian Courtyard is a unique concept in retirement living. Grounded in a Christian heritage, this Life Style Community focuses on your independence, physical health and emotional well being. Our philosophy provides you and your family with peace of mind, knowing that as your needs change, services are available

Prices range from \$95,200

THE MARIAN COURTYARD

**PRESENTATION
CENTRE HOURS**
Sat - Sun - Mon 1:30-4:30 p.m.
(905) 878-1951

139 Martin Street,
Milton



**We couldn't think of a better way
to thank you for making
the Civic Canada's best selling car.**



Introducing the Civic Special Edition

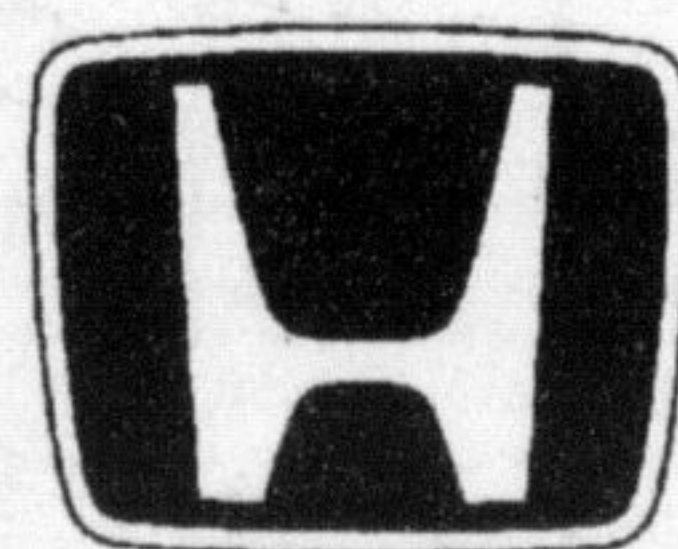
Standard Features Include:

- Air Conditioning • Power Door Locks • Keyless Entry • Body-Coloured Door Handles
- "Special Edition" Badging • Driver and Front Passenger Air Bags (SRS) • AM/FM Stereo System
- Adjustable Steering Column • 5-Speed Manual Transmission with Starter-Interlock System

\$16,900

\$238
per month/48 months
*WITH ONLY \$1200
DOWN FREIGHT &
P.D.E. INCLUDED

Lease offers are available, on approved credit, only through Honda Canada Finance Inc. for a limited time. Lease payments are for 48 months and include freight and P.D.E. (\$850) with 95,000 km (110¢/km according to 95,000 applies). *Based on a new 1999 Civic Sedan SE, 5-Speed. Down payment or equivalent trade of \$1,200 required plus first monthly payment and security. Option to purchase at lease end for \$8,450 plus taxes. A.L.R. 6.79% Zero down payment plans also available. **Taxes, licence, insurance, admin. and maintenance fees are additional.



**GEORGETOWN
HONDA**



Our Business is Built on Service

203 Guelph Street 873-1818 Tor. (905) 874-3021



HONDA
BUILT WITHOUT COMPROMISE