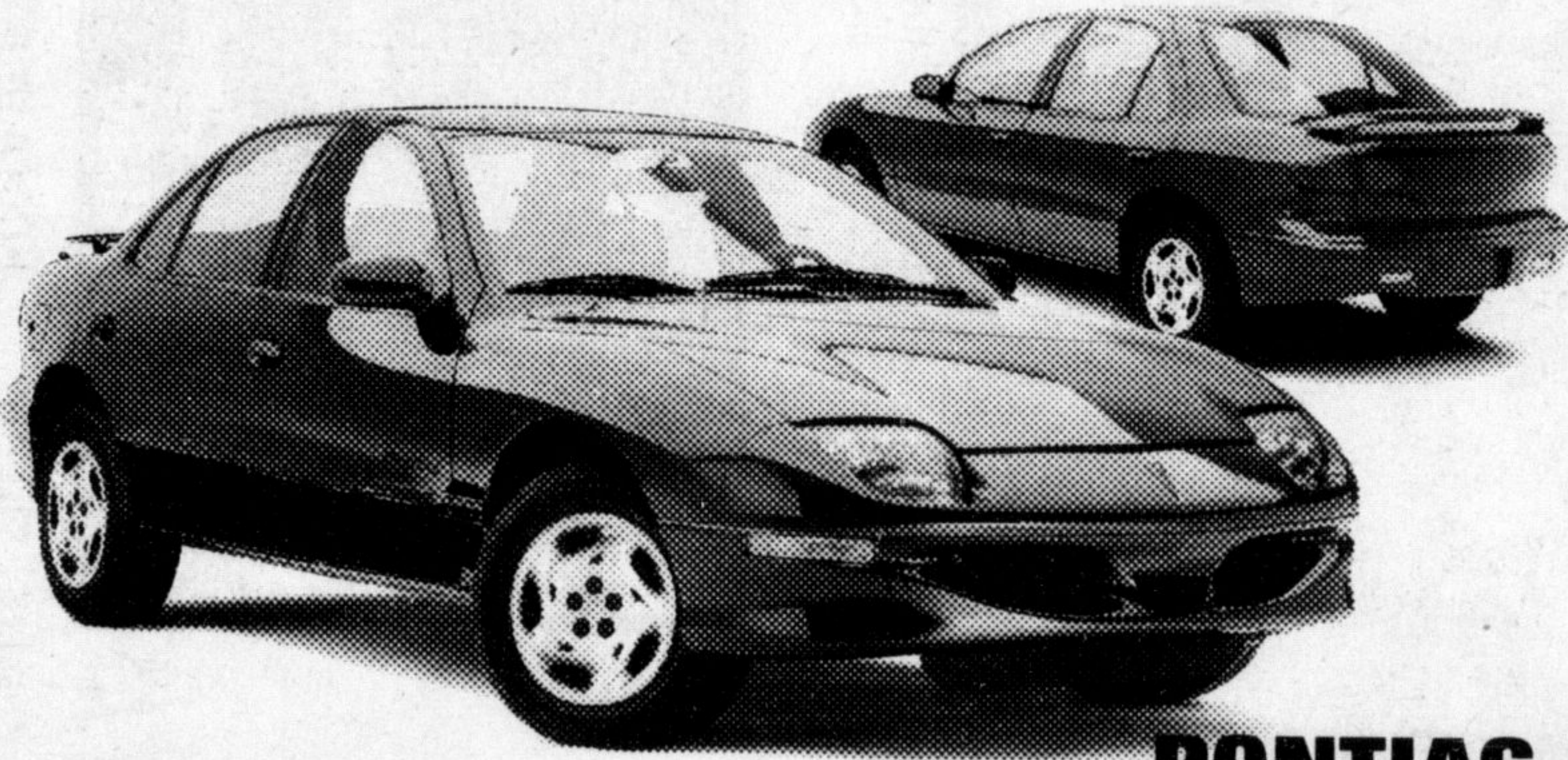




PERFORMANCE YOU CAN RELY ON.



1999 PONTIAC SUNFIRE SEDAN

WITH ITS SPORTY LOOKS, THE 4-DOOR SUNFIRE IS BY FAR THE MOST EXCITING IN ITS CATEGORY.

- 2.2 litre 2200 L4 115 HP engine • Automatic transmission
- Air conditioning • Rear spoiler • 4-wheel anti-lock braking system • Folding rear seatback • Next Generation dual front air bags • PASSLock® theft-deterrent system

SMARTLEASE
\$218
PER MONTH/36 MONTHS/
 \$1,300 DOWN PAYMENT/
 \$645 FREIGHT REQUIRED/
 \$300 SECURITY DEPOSIT REQUIRED
 OR
PURCHASE PRICE
\$17,898
EXCLUDES FREIGHT \$645
WITH 1.9%
LEASE RATE UP TO 36 MONTHS

PONTIAC PERFORMANCE PACKAGE
THE ONLY 4-DOOR IN ITS CLASS WITH ABS, DUAL AIR BAGS, POWER DOOR LOCKS, TACHOMETER, 15" WHEELS, REAR SPOILER AND A 1.9% LEASE RATE



SMARTLEASE
\$238
PER MONTH/36 MONTHS/
 \$2,050 DOWN PAYMENT/
 \$720 FREIGHT REQUIRED/
 \$300 SECURITY DEPOSIT REQUIRED
 OR
PURCHASE PRICE
\$19,998
EXCLUDES FREIGHT \$720
WITH 4.9%
PURCHASE FINANCING UP TO 48 MONTHS

1999 PONTIAC GRAND AM SE

INJECTED WITH LOTS OF GOOD IDEAS...AND A HEALTHY DOSE OF ADRENALINE, YOUR RELIABLE DRIVING EXCITEMENT COMES COMPLETE.

- 2.4 litre Twin Cam 150 HP engine • Bold and exciting new design • All-new chassis, with exceptional rigidity • 4-wheel anti-lock braking system • 4-speed automatic transmission with Enhanced Traction System
- 4-wheel independent suspension • Power door locks • Tilt-Wheel™ • PASSLock® theft-deterrent system



1999 CENTURY BY BUICK

SURROUND YOURSELF WITH A SURPRISING TOUCH OF LUXURY.

- 3.1 litre 3100 V6 160 HP engine • 6-passenger seating • 4-speed automatic transmission
- 4-wheel ABS • 4-wheel independent suspension • Power door locks, windows and mirrors
- Air conditioning • PASS-Key® II theft-deterrent system • Enhanced Traction System
- Remote keyless entry with Panic feature • Automatic Light Control • Cruise control

SMARTLEASE
\$288
PER MONTH/36 MONTHS/
 \$2,680 DOWN PAYMENT/
 \$835 FREIGHT REQUIRED/
 \$350 SECURITY DEPOSIT REQUIRED
 OR
PURCHASE PRICE
\$23,998
EXCLUDES FREIGHT \$835



SMARTLEASE
\$258
PER MONTH/36 MONTHS/
 \$2,360 DOWN PAYMENT/
 \$895 FREIGHT REQUIRED/
 \$300 SECURITY DEPOSIT REQUIRED
 OR
PURCHASE PRICE
\$23,798
EXCLUDES FREIGHT \$895
WITH 1.9%
PURCHASE FINANCING UP TO 48 MONTHS

1999 PONTIAC TRANS SPORT

A TRUE PONTIAC, THIS MAY BE THE ONLY MINIVAN SPORTY ENOUGH TO HAVE BEEN BUILT FOR DRIVERS.

- 3.4 litre 3400 V6 185 HP engine • 4-speed automatic transmission • Air conditioning • Next Generation driver and front passenger air bags • Seat-mounted side air bags • 4-wheel ABS



1999 LIMITED EDITION GMC JIMMY DESCENTE 4x4 4-DOOR

HIGH ON COMFORT AND LOW ON FINANCING, THIS JIMMY COMES EQUIPPED WITH:

- 4.3 litre Vortec 4300 V6 190 HP engine • Automatic transmission
- Next Generation dual front air bags • 4-wheel ABS • Power door locks/windows • Tilt-Wheel™
- AM/FM stereo cassette • Air conditioning • Locking differential • Premium ride suspension
- Remote keyless entry system.

Buy or lease a 1999 Jimmy Descente and you'll receive a his or hers Descente ski jacket and a pair of Rossignol skis and bindings.

SMARTLEASE
\$358
PER MONTH/36 MONTHS/
 \$3,320 DOWN PAYMENT/
 \$755 FREIGHT REQUIRED/
 \$425 SECURITY DEPOSIT REQUIRED
 OR
PURCHASE PRICE
\$34,828
EXCLUDES FREIGHT \$755
WITH 2.9%
PURCHASE FINANCING UP TO 48 MONTHS

ONLY AT YOUR LOCAL ONTARIO PONTIAC•BUICK•GMC DEALER.



We'd like to you to know more: Come visit your local dealer, our website at www.gmcanada.com or call 1-800-GM-DRIVE. *Based on a 36 months lease for Sunfire Sedan R7B, Grand Am SE Sedan R7B, Century R7Z, Trans Sport R7Z, Jimmy 4-door R7Z. A down payment or trade of \$1,300/\$2,050/\$2,680/\$2,950/\$3,320 and security deposit as indicated required. Total obligation is \$9,148/\$10,618/\$13,048/\$12,238/\$16,208. Annual cost of borrowing of 1.9%/5.4%/6.9%/4.4%/5.4% per annum. Annual kilometre limit 20,000km, \$0.12 per excess kilometre. Other lease options available. **Freight, as indicated. Licence, insurance, P.P.S.A., administration fees and taxes not included. Dealer may sell or lease for less. **Financing on approved GMAC credit only. Example: \$10,000 at 4.9% APR, the monthly payment is \$229.84 for 48 months. Cost of borrowing is \$1,032.32. Total obligation is \$11,032.32. Example: \$10,000 at 2.9% APR, the monthly payment is \$220.90 for 48 months. Cost of borrowing is \$603.20. Total obligation is \$10,603.20. Example: \$10,000 at 1.9% APR, the monthly payment is \$216.51 for 48 months. Cost of borrowing is \$392.48. Total obligation is \$10,392.48. Downpayment, trade and/or security deposit may be required. Monthly payment and cost of borrowing will vary depending on amount borrowed and down payment/trade. ***Offers apply to select 1999 new or demonstrator models equipped as described, and applies to qualified retail customers in Ontario only (excluding Thunder Bay and Kenora). Limited time offers which may not be combined with other offers. Dealer order/trade may be necessary. See your dealer(s) for conditions and details. www.gmcanada.com is a trademark of General Motors Corporation.

