

**Dateline promotes your non-profit events at no charge.**

# Dateline

• from **DATELINE** on page 10  
Saturday Feb. 20

The Milton Choristers presents 'Glory of Romance', a 30th anniversary gala celebration of songs, sonnets and a dessert buffet, at Milton Alliance Church at 7:30 p.m. Special guests include Milton

Choristers alumni, soloist Laura Jeffrey and members of the Milton Players Theatre Group. Admission, which includes the buffet, costs \$15, or \$13 for seniors and students. Children aged 12 years and under are admitted free. Tickets are available at Peggy's (Milton Mall), Delacourt's (Main

Street) and at the door or by calling 875-4588.

The **Brookville Minor Baseball Association** holds its 1999 registration from 10 a.m. to 2 p.m. at the Nassagaweya Community Centre. T-ball starts at age 4. Everyone is welcome.

**Saturday Feb. 20 - 21**

Auditions for the Milton Players Theatre Group's production of 'The Last of the Red Hot Lovers', written by Neil Simon and directed by Patricia Adams, take place at 295 Alliance Rd., Unit 15, from 2 to 4 p.m. For more information, call 853-5709.

**Sunday Feb. 21**

The 1st Annual Milton Toy Show and Auction takes place at Halton Grounds Care Equipment, 1589 Steeles Ave. E., from 9:30 a.m. to 3:30 p.m. Food and refreshments are available throughout the day. Admission costs a donation to the Salvation Army food bank. All proceeds are donated to the cause. For further information, call 878-2121.

Mark Curtis presents 'Lent, Springtime in the Heart' at Ebenezer United Church, 12274 Guelph Line (6 km north of Hwy. 401), at 7:30 p.m. Everyone is welcome.

**Milton Community Heritage Awards celebrations** take place at Hugh Foster Hall (beside Town Hall) at 1:30 p.m. with the premiere showing of a video about Victoria Park followed by the presentation of the annual awards at 2:15 p.m. The celebration also features award winners' displays, a performance by the Sheila Graham Irish Dancers and refreshments. Everyone is welcome to attend the free event. Contact Bruce Carlin at 875-4588 for further information.

**Monday Feb. 22**

The Milton Seniors' Activity Centre hosts a trip to **Casino-Rama** in Orillia. The cost, which includes transportation and a buffet lunch, is \$7 for members and \$12 for non-members. Call 875-1681 to sign up.

The Halton-Peel branch of the **Ontario Genealogical Society** meets in the lower level of Chinguacousy Branch Library, 150 Central Park Dr., in Brampton at 2 p.m. The guest speaker is Sherilyn Bell, who discusses 'Genealogy and Genetics'. Visitors are welcome.

**MADD Halton** meets at the Oakville Town Hall, 1225 Trafalgar Rd., in Oakville at 7:30 p.m. New volunteers are welcome. For more information, call 844-0096.

**Tuesday Feb. 23**

**Help for Parents**, a parents' support group, meets at Pinelands Presbyterian Church, 5270 New St., in Burlington at 7:30 p.m. The non-denominational, self-support group with trained leaders helps parents of children in trouble at home, at school or with the law, or are abusive or taking drugs. Call 1-800-488-5666 for more information.

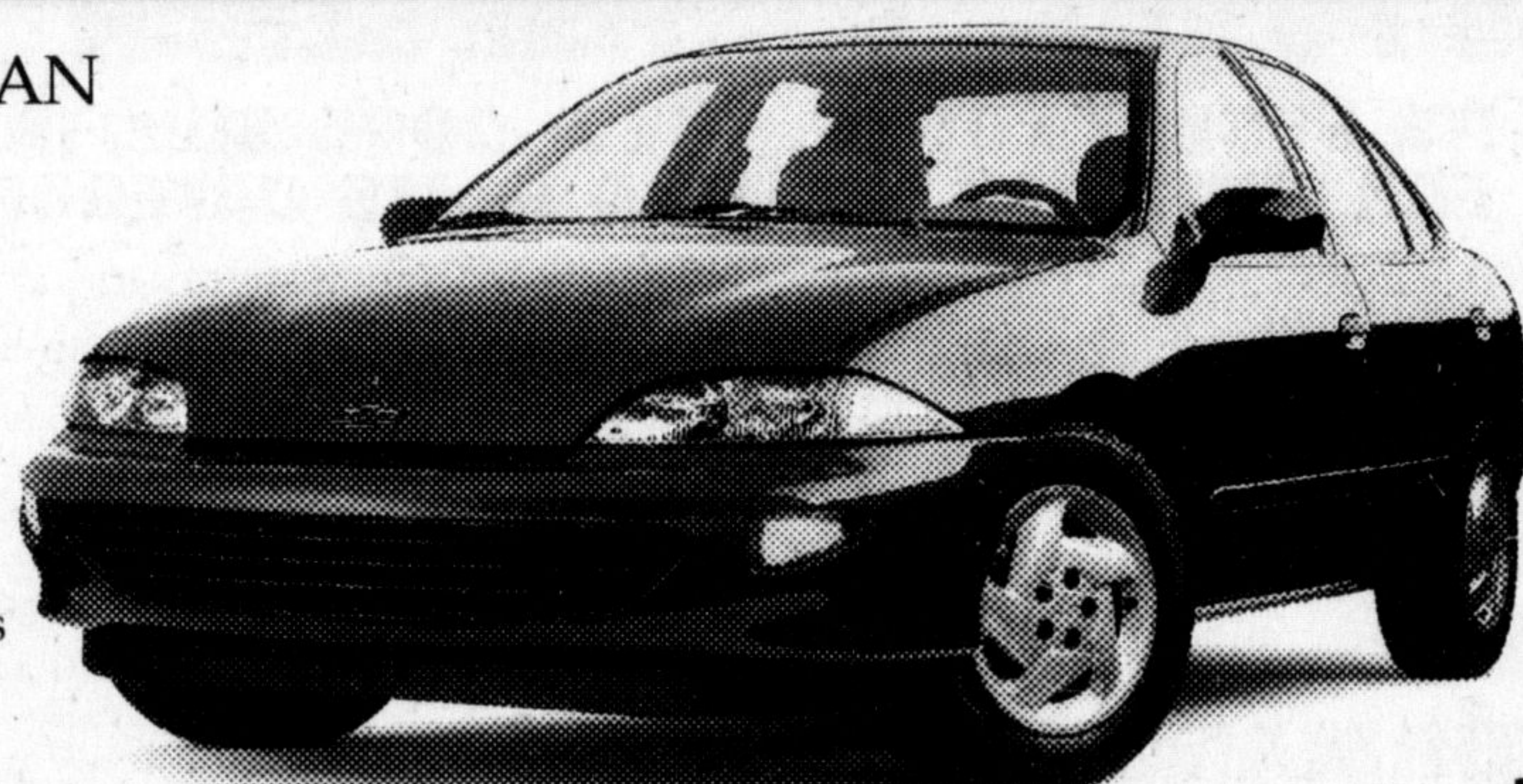
**Wednesday Feb. 24**

Halton Healthcare Services, the amalgamated corporation of Milton District and Oakville-Trafalgar Memorial hospitals, presents free seminar 'Women and Heart Disease' at the Ramada Inn in Oakville at 7 p.m. Dr. Andrew Zawadowski, cardiologist, and Nicola Simmons, emergency education specialist, make participants aware of their risk of heart disease and stroke and provide strategies on how to reduce it. Call 338-4379 to reserve a seat.

The **Milton Road Safety Committee** meets in the Community Room of the Halton Regional Police station, 490 Childs Dr., at 7 p.m. The committee was formed to identify road safety issues in Milton and develop strategies to reduce the incidence of deaths and injuries due to motor vehicle crashes. Everyone is welcome.

# Start A Long Lasting Relationship

1999 CAVALIER SEDAN  
If Only Everything  
In Life Was As  
Dependable  
As A Cavalier.



- 2.2 litre engine • 4-wheel anti-lock braking system • AM/FM stereo
- Next Generation dual front air bags
- PASSLock™ theft-deterrent system

1999 CHEVROLET CAVALIER SEDAN  
NO SURPRISE LEASE GUIDE

<b>MONTHLY PAYMENT</b> (36 mo/60,000 km)	<b>\$208</b>
CASH DOWN (incl. Freight of \$645 and Air Tax of \$100)	\$2,120
GAS TAX	\$75
PRE-DELIVERY INSPECTION	NO EXTRA CHARGE
PST/GST (incl. Tax on Payment)	\$360
SECURITY DEPOSIT	\$300
<b>TOTAL AMOUNT DUE ON DELIVERY</b>	<b>\$3,063</b>

Licence, P.P.S.A. & Admin. Fees Extra

With \$0 down, monthly payment is \$269 (plus tax) - \$721 due on delivery.

**VALUE PACKAGE**  
INCLUDING POWER DOOR LOCKS, CRUISE CONTROL,  
AIR CONDITIONING, AUTOMATIC TRANSMISSION AND A 1.9% LEASE RATE.

SMARTLEASE  
**\$208** WITH  
36 months

**1.9%** OR **\$17,995**  
Lease Rate Up To 36 Months  
PURCHASE  
\$17,995  
(Includes Freight of \$645 and Air Tax of \$100. Licence, insurance and taxes extra)



1999 CHEVY VENTURE  
NO SURPRISE LEASE GUIDE

<b>MONTHLY PAYMENT</b> (36 mo/60,000 km)	<b>\$248</b>
CASH DOWN (incl. Freight of \$895 and Air Tax of \$100)	\$3,950
GAS TAX	NOT APPLICABLE
PRE-DELIVERY INSPECTION	NO EXTRA CHARGE
PST/GST (incl. Tax on Payment)	\$630
SECURITY DEPOSIT	\$300
<b>TOTAL AMOUNT DUE ON DELIVERY</b>	<b>\$5,128</b>

Licence, P.P.S.A. & Admin. Fees Extra

With \$0 down, monthly payment is \$365 (plus tax) - \$845 due on delivery.

1999 CHEVY VENTURE  
Maximum Flexibility That Gives You  
The Freedom You Want.

- 3400 SFI V6 engine • Automatic transmission • 4-wheel anti-lock braking system • Next Generation dual front air bags • Single sliding rear door with child-security lock • Air conditioning • AM/FM stereo
- Power steering • Power door locks

SMARTLEASE  
**\$248** OR **\$24,295** WITH **2.9%**  
36 months (Includes Freight of \$895 and Air Tax of \$100. Licence, insurance and taxes extra) Purchase Financing Up To 48 Months



1999 CHEVROLET MALIBU  
NO SURPRISE LEASE GUIDE

<b>MONTHLY PAYMENT</b> (36 mo/60,000 km)	<b>\$228</b>
CASH DOWN (incl. Freight of \$720 and Air Tax of \$100)	\$2,720
GAS TAX	\$75
PRE-DELIVERY INSPECTION	NO EXTRA CHARGE
PST/GST (incl. Tax on Payment)	\$453
SECURITY DEPOSIT	\$300
<b>TOTAL AMOUNT DUE ON DELIVERY</b>	<b>\$3,776</b>

Licence, P.P.S.A. & Admin. Fees Extra

With \$0 down, monthly payment is \$310 (plus tax) - \$818 due on delivery.

1999 CHEVROLET MALIBU  
A Quality, Affordable, Mid-size Sedan  
That Delivers More Value Than  
You'd Ever Expect

- 2.4 litre Twin Cam engine • Automatic transmission with overdrive • 4-wheel anti-lock braking system • Next Generation dual front air bags • PASSLock™ theft-deterrent system • Air conditioning • Child-security rear door locks
- AM/FM stereo with cassette • Tilt-Wheel™ steering • Body colour mouldings

SMARTLEASE  
**\$228** OR **\$20,295** WITH **4.9%**  
36 months (Includes Freight of \$720 and Air Tax of \$100. Licence, insurance and taxes extra) Purchase Financing Up To 48 Months



1999 CHEVY BLAZER LS 4-WHEEL DRIVE  
NO SURPRISE LEASE GUIDE

<b>MONTHLY PAYMENT</b> (36 mo/60,000 km)	<b>\$358</b>
CASH DOWN (incl. Freight of \$755 and Air Tax of \$100)	\$3,920
GAS TAX	\$400
PRE-DELIVERY INSPECTION	NO EXTRA CHARGE
PST/GST (incl. Tax on Payment)	\$702
SECURITY DEPOSIT	\$425
<b>TOTAL AMOUNT DUE ON DELIVERY</b>	<b>\$5,805</b>

Licence, P.P.S.A. & Admin. Fees Extra

With \$0 down, monthly payment is \$476 (plus tax) - \$1,557 due on delivery.

1999 CHEVY BLAZER LS  
4-WHEEL DRIVE

This Hardworking Sports Utility Vehicle Offers  
Security In An Insecure World.

- Vortec 4300 SFI V6 engine • Automatic transmission with overdrive • 4-wheel anti-lock braking system • Next Generation dual front air bags • Air conditioning • AM/FM stereo with cassette • Solar-Ray deep tinted glass • Power windows/door locks/mirrors • Tilt-Wheel™ steering • Electronic transfer case

SMARTLEASE  
**\$358** OR **\$35,595** WITH **2.9%**  
36 months (Includes Freight of \$755 and Air Tax of \$100. Licence, insurance and taxes extra) Purchase Financing Up To 48 Months

Puts You In  
Complete Control,  
With Up-Front,  
Full Disclosure  
Pricing With No  
Aftershook.



**Chevrolet Dealers**  
OF ONTARIO



We'd like you to know more: Come visit us at your local dealer, on our website at [www.gmc.ca](http://www.gmc.ca) or call us at 1-800-GM-DRIVE. All leases have annual kilometre limit of 20,000 km, \$0.12 per excess kilometre. PST, GST and insurance extra. Other lease options available. All leases have an annual cost of borrowing of 1.9% to 4.9% per annum for Cavalier/Venture/Malibu/Blazer. \*Financing on approved GMAC credit only. Example: \$10,000 at 2.9%/4.9% APR, the monthly payment is \$220.90/\$229.84 for 48/48 months. Cost of borrowing is \$603.20/\$1,032.32. Total obligation is \$10,603.20/\$11,032.32. Down payment and/or trade may be required. Monthly payment and cost of borrowing will vary depending on amount borrowed and down payment/trade. Offers apply to new 1999 models of Cavalier/R70/Venture/R7Z/Malibu/R7Z/Blazer/R7Z equipped as described. Offers apply to qualified retail customers in the Ontario Chevrolet Dealer Marketing Association only. Dealer order or trade may be necessary. Limited time offer which may not be combined with other offers. Dealer may sell or lease for less. See your dealer(s) for conditions or details.