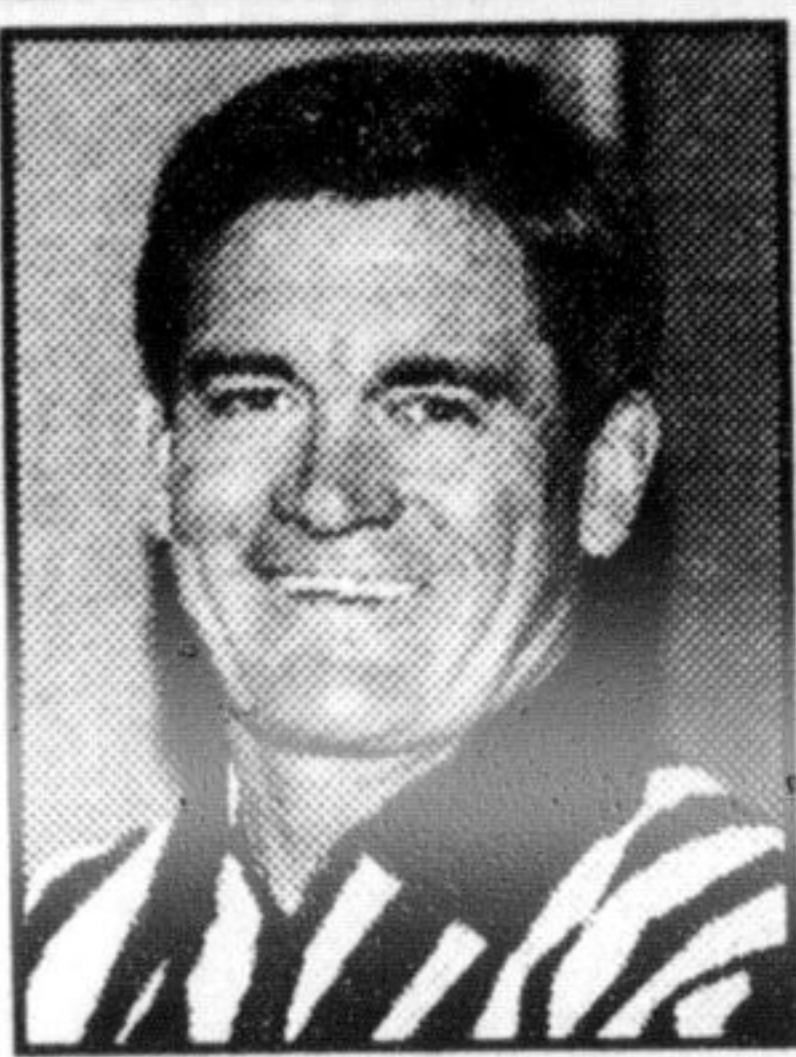


**Travel**  
with  
*Bruce Hood*



**A GREAT IDEA!**

**GIVE THE GIFT OF TRAVEL  
-FOR CHRISTMAS!**

GIVE THE GIFT OF TRAVEL for anytime in '99 - get brochures/ pictures, and all the info you can, of the location you plan to take the whole family to in the NEW YEAR - present these 'items' to the family at Christmas, and 'ENJOY THE GOOD FEELING' over the weeks until you travel!



YOU CAN GET 50% OFF ON A CRUISE IN FEBRUARY - HOLLAND AMERICA is offering this opportunity on a couple of cruises on each of the WESTERDAM AND THE VEENDAM - they cruise out of FORT LAUDERDALE, into the EASTERN AND WESTERN CARIBBEAN!



FLY TO MOSCOW & VISIT 'THE KREMLIN' as AEROFLOT, Russia's National Carrier offers twice weekly flights to this historic and cultural city.



ASIA EXPECTS AN INCREASE IN TOURISM in the coming years and the whole ASIA/PACIFIC REGION, while currently having a downturn in their economy, look towards an influx of tourists from North America.



TOURISM TO ITALY IS ON THE UPSWING and now ALBATOURS OFFERS AIR-INCLUSIVE PACKAGES TO ITALY for the first time starting in May.



HOW ABOUT A CONDO AT ISLA DEL SOL in FLORIDA - its available in the New Year - two bedroom, two bathroom, fully furnished, balcony overlooks the tenth hole of the golf course.



AN ALL-INCLUSIVE VACATION PACKAGE to the CARIBBEAN, to MEXICO, to CUBA; or an ECOTOUR to some far-off destination; or VISIT CANADA IN '99 - lots to do and see-



THE GIFT OF TRAVEL is a very memorable gift - ENJOY!

*The Way To Go!*  
**Bruce Hood**  
**Travel**  
Professional Travel  
& Cruise Officials

**878-2886**  
**16 Martin St.**  
(downtown)

Also in Halton Hills, Oakville and Clarkson  
[www.brucehood.com](http://www.brucehood.com)

Bringing The World To You Since 1961

# Christmas business is generally brisk, but few are buying winter-related goods

By **KAREN SMITH**

*The Champion*

While some merchants are reluctant to comment on their Christmas sales, most say business is strong this season.

Downtown merchants like Fiona Kennedy of Nature's Fire on Main Street said sales have picked up this holiday season, as she believes more Miltonians are supporting shops in the centre core.

"A lot of people are thinking of their own local retailers, which is great to see," said the operator of the three-year-old business that sells science

and nature-related toys for children.

Meanwhile, Kimberly English of A Country Mile in Carriage Square, said sales are up for her business but she has heard opposite reports from other retailers — especially from those who sell traditional winter weather-related goods.

Canadian Tire general manager David Shuvera, who has good news and bad news this month, says he knows the feeling.

While sales of winter weather products such as shovels are suffering at Canadian Tire due to the mild temperatures, holiday season business at the Market Drive store is generally strong, he said.

"Sales are good at Christmas," he said. "We've been able to bring in a lot of what customers are looking for."

Zellers manager Scott Weir said for him, it's all been good news.

"We've been doing well with the all the changes we made in the last year," he said. "It's just been excellent."

A popular toy called Furby and the Walt Disney trivial pursuit game have been selling like hotcakes, he said.

"I can't give you numbers, but I can tell you we're up over Christmas last year."

Ford of Canada and the Ontario Ford & Mercury Dealers present

# Year End Event

Offer ends December 31st.

**1998 FORD ESCORT SE/ SEDAN OR WAGON**  
**SAVE UP TO \$3,662\***  
in interest compared to 8.5% financing

**1998 FORD CONTOUR SE/ MERCURY MYSTIQUE LS SPORT**  
**SAVE UP TO \$4,577\***  
in interest compared to 8.5% financing

**1998 FORD TAURUS SE SPORT/ MERCURY SABLE LS - SEDAN OR WAGON**  
**SAVE UP TO \$5,493\***  
in interest compared to 8.5% financing

**1998 F-SERIES XLT SUPERCAB**  
**SAVE UP TO \$6,409\***  
in interest compared to 8.5% financing

**0% Purchase Financing Can Save You Thousands.**  
Make your best deal and get 0%,  
48-month purchase financing on most 1998 Ford & Mercury models:  
Contour, Crown Victoria, Escort, Grand Marquis, Mustang, Mystique, Sable, Taurus, ZX2, Expedition, Explorer, F-Series, Ranger, Villager and Windstar.

**Holiday Lease Rate Reduction on '99 Windstar LX**

**\$269\*\*** 5-Star Safety Rating\*  
30-month lease

WE HAVE THE RIGHT LEASE PAYMENT FOR YOU	
1999 Windstar LX Monthly Payment	Down Payment or Equivalent Trade
\$269	\$4,552
\$343	\$2,500
\$378	\$1,500
\$430	\$ 0

**Ontario FORD Mercury Dealers**  
Or visit our website at: [www.ford.ca/offers/](http://www.ford.ca/offers/)

WISE BUYERS READ THE LEGAL COPY: \*0% financing on most in-stock 1998 Ford and Mercury models for a maximum of 48 months on approved credit to qualified retail lessees. E.g. \$20,000 financed at 0% annual percentage rate ("APR") for 48 months, monthly payment is \$416.67, cost of borrowing ("C.O.B.") is \$0 and total to be repaid is \$20,000 with \$0 down payment. 1998 in-stock Ford Escort SE Sedan or Wagon with \$20,000 financed at 0% APR for 48 months, C.O.B. is \$0, compared to a financing rate of 8.5% for 48 months, C.O.B. is \$3,662.08. 1998 in-stock Contour SE/ Mystique LS Sport with \$25,000 financed at 0% APR for 48 months, C.O.B. is \$0, compared to a financing rate of 8.5% for 48 months, C.O.B. is \$4,577.60. 1998 in-stock Ford Taurus SE Sport/ Mercury Sable LS with \$30,000 financed at 0% APR for 48 months, C.O.B. is \$0, compared to a financing rate of 8.5% for 48 months, C.O.B. is \$5,493.12. 1998 in-stock F-Series XLT Supercab 4x4 with \$35,000 financed at 0% APR for 48 months, C.O.B. is \$0, compared to a financing rate of 8.5% for 48 months, C.O.B. is \$6,409.12. This offer does not include F-Series over 8,500 lbs. GVW. Econoline or Lincoln models. Down payment may be required on above financing offer. These are sample calculations only. \*\*New 1999 Windstar LX, as shown, monthly lease payment of \$269 based on a 30-month lease from Ford Credit to qualified retail lessees, on approved credit. Some conditions and a mileage restriction of 50,000 km over 30 months apply. \$4,552 down payment or equivalent trade required. First month's payment and security deposit required. Freight (\$895), licence, insurance and all applicable taxes are additional. Lease rate is based on a monthly interest rate of 4.9% over 30 months. Financing and lease rate offers herein are mutually exclusive. Offer cannot be combined with any other offer. Dealer may sell or lease for less. All offers may change without notice. Limited time offers. See dealer for details. Not all vehicles are available at all dealerships. \*The highest frontal impact rating for both the driver and front passenger in U.S. government National Highway Traffic Safety Administration testing for vehicles within 227 kg (500 lbs). Ontario FMDA, P.O. Box 2000, Oakville, Ontario L6J 5E4