

# Easy Does It: Prime It!

We know, you thought you had heard all there was to hear on this topic, but there is more. It's good news. We now carry Prime-it and Prime-it Plus.

clear primer which has many excellent qualities. It can save you time because drying is reduced to four hours under normal conditions. When priming a non-porous surface a 24 hour drying/curing time is

recommended. Prime-it cuts your costs by giving greater area coverage. Because it is a virtually transparent product it provides twice the coverage of most other primers. And yet, this non-pigmented primer can be tinted towards the colour of your top coat paint.

Here are some other properties which make Prime-it a useful base coat. It can be used on drywall, plaster, tile, formica, wood, painted and glossy surfaces. It has excellent ultraviolet protection for exterior use. It is pleasant to use because of the low odour and easy soapy water clean up. It can be brushed, rolled, sprayed or sponged on.

As mentioned earlier, we also have Prime-it Plus. This primer doesn't have the increased coverage, but it will resist formation of mildew in bathrooms, basements, etc. It dries in two hours under normal conditions. Prime-it Plus will prevent cedar, redwood and

plywood from bleeding. It has soapy water clean up and low odour.

Again this is an interior or exterior primer with UV protection. It will adhere to difficult surfaces as well as new drywall and plaster.

Both of these primers can go over latex or oil paint and may be covered with either. The usual prep work is still required, such as loose or peeling paint removal, a TSP wash, crack and nailhole repair. These are small jobs that should always be done before painting to make a big difference in the overall appearance of the completed walls. Once they are out of the way we have Prime-it and Prime-it Plus to make your job at least one step easier.

Submitted by St. Clair, the Paint and Paper People.  
475 Main St. E, 878-2629

## WHY PAY MORE? For Wallpaper Book Orders.

**We Discount\*  
All Our  
Wallpaper  
Books  
EVERYDAY!**



\*when you buy 2 single rolls/spools or more.

**StClair**  
the paint and paper people



Mon, Tues 9-6. Wed, Thurs, Fri 9-9. Sat 9-6. Sun 12-4

**475 Main St. E. 878-2629**

Your Milton Real Estate Marketplace

**BEST HOMES**

To Advertise, call  
**Kathy McLean at 878-2341**

JOYCE SCOTT REAL ESTATE INC. **JSR**



**HELP! I have  
SERIOUS customers looking for  
LOW LEVEL bungalow in town!**

**PHONE & FAX (905) 878-1526**

**JOYCE SCOTT  
PRESIDENT/BROKER**



**The name behind the business.**



**John Weide**  
ASSOCIATE BROKER

**Sutton  
GROUP**

sutton group -  
people & properties inc.  
AN INDEPENDENT MEMBER BROKER

Your **Halton-Milton Connection**  
**905-844-5000**

internet: <http://www.mls.ca>

### WANTED

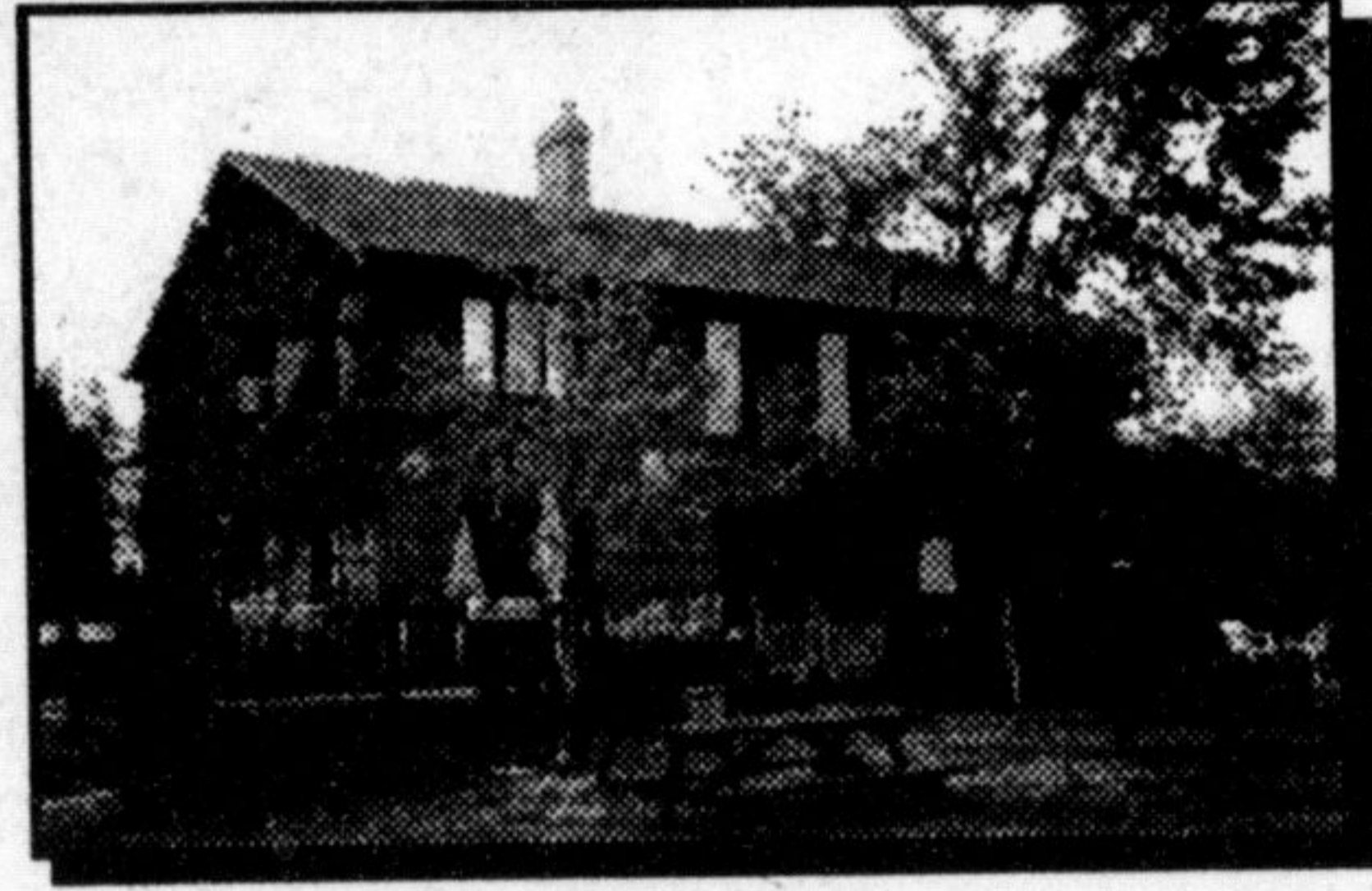
- COUNTRY RANCHES  
Burl. - \$300,000 to \$400,000
- ESTATE HOME  
\$400-500,000 near Milton
- ESCARPMENT HOME  
Secluded \$300-400,000
- SMALL HOME WITH ACERAGE  
up to hwy. 7 - up to \$250,000



**9.8 ACRES \$359,900**  
A long driveway, with custom built home, large rooms, sunroom + family room, FP. 5 stall barn. North of Milton.  
To view call John Weide



**COUNTRY - CLOSE TO MISS., MILTON, OAKVILLE \$299,900**  
Custom built about 10 years ago by present owner, lovely open floor plan, living room fireplace is 2 floors high, large country kitchen, separate dining room, master bedroom with jacuzzi, bath ensuite, separate non-conforming 2 bedroom in-law suite or apartment. Situated on large lot, pave road.  
Call John Weide 844-5000

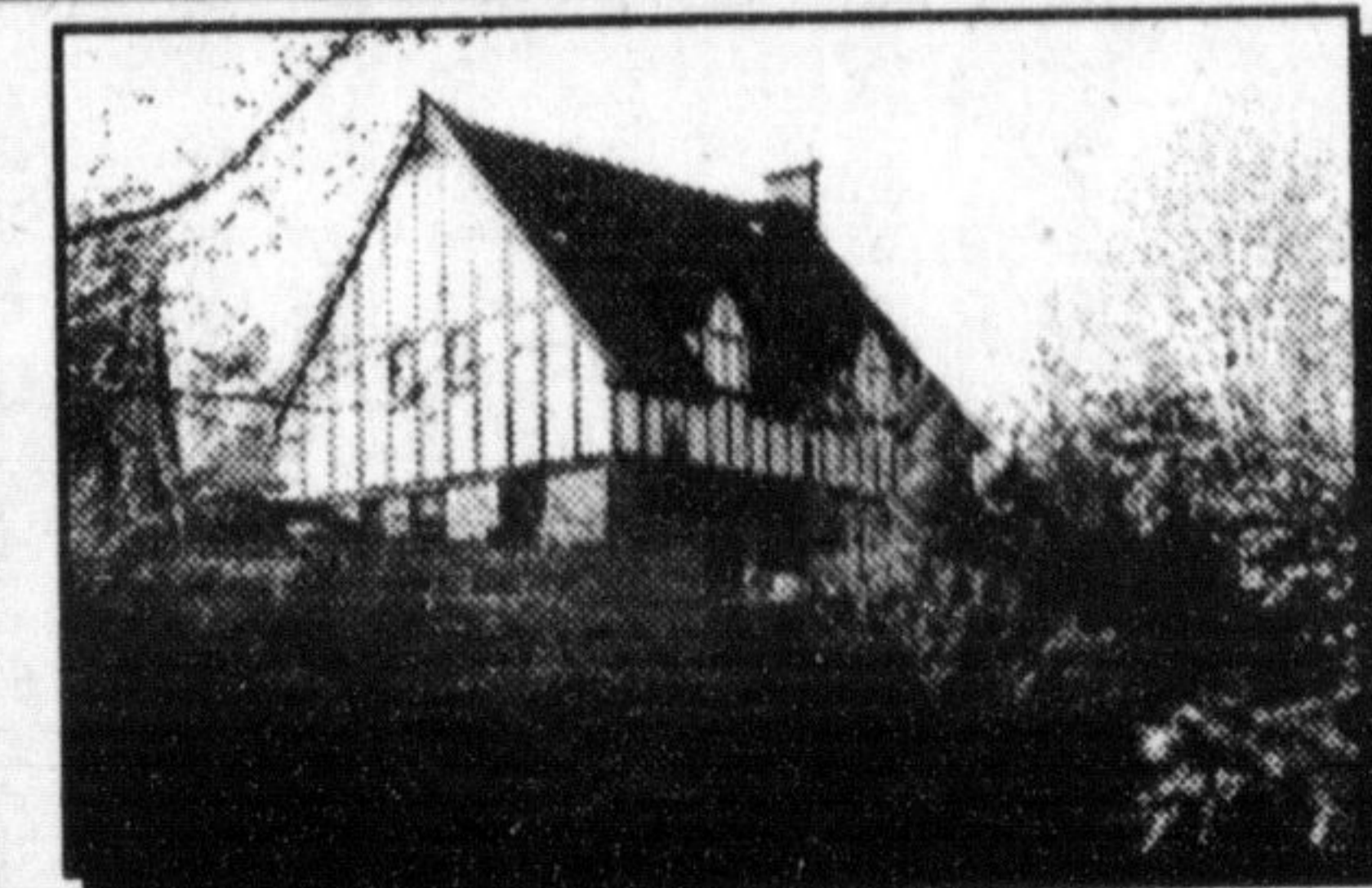
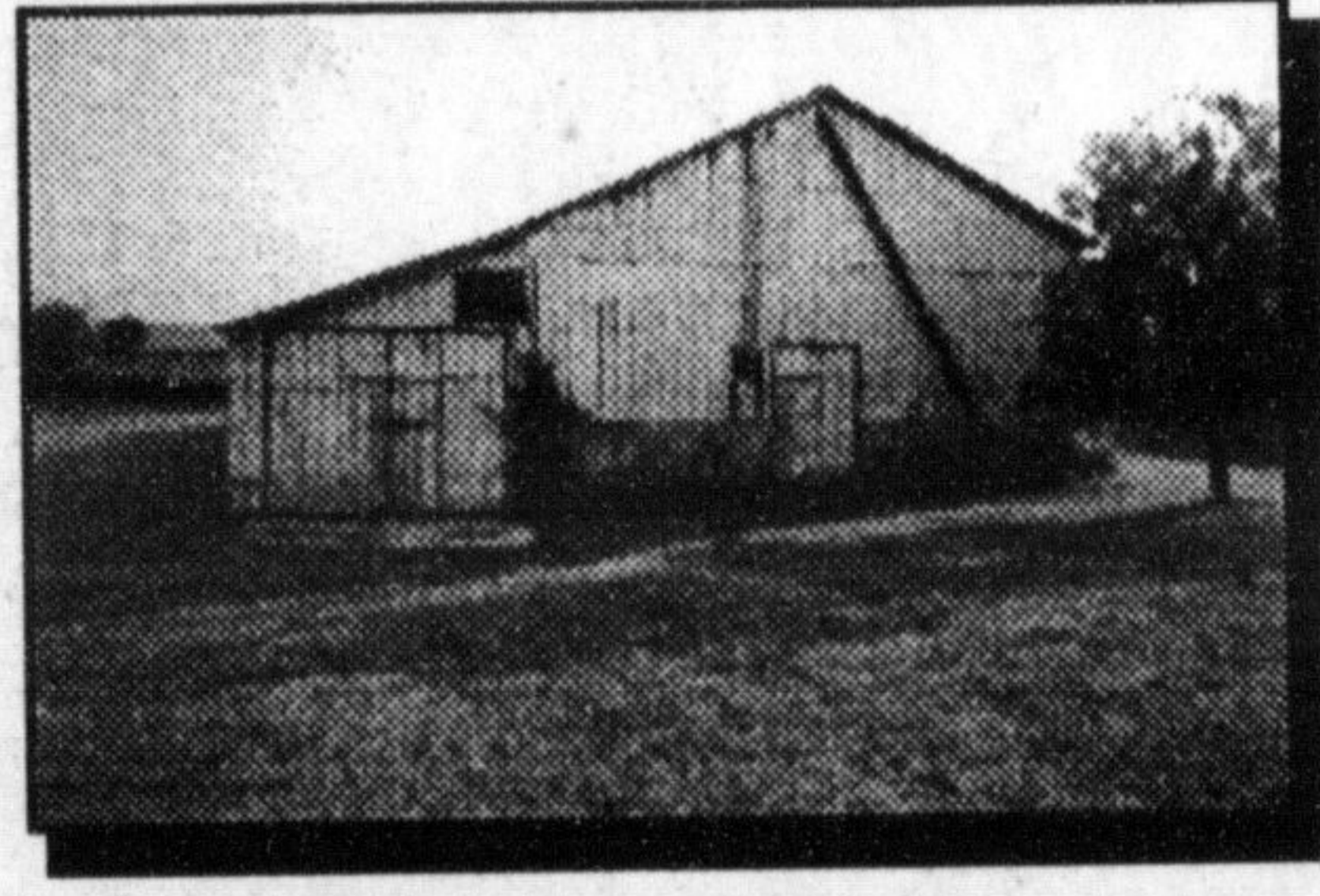


**MILTON IN TOWN  
\$279,900  
PARK YOUR**

**TRANSPORT TRUCK HERE!**  
Large lovely sidesplit home. Main floor family room, eat-in kitchen, stone fireplace in living room. 4 bedrooms, ensuite bath. On large lot, 125' x 350 ft (0.99 acre). Legal residence. Allows for many uses. Presently zoned M1 industrial with business park area future designation in official plan, which will allow restaurants, theatres, auto sales, hotel & other institutional uses. Investigate!  
Call John Weide 844-5000.



**MILTON 2 ACRES IN TOWN \$284,900**  
Large 3 bedroom brick ranch home well-built + separate barn, approx. 2,800 sq.ft., located near Toronto Auto Auction on quiet road. Excellent future potential for large gain in property value. For more information call John Weide



**EDGE OF BURLINGTON \$534,900**  
A magnificent quality custom built English tudor style home. 3 or 4 BRs, 4 bathrooms, 3 FP. Beautifully upgraded kitchen with sun-room. High elevation on the escarpment, on a clear day, you can see over Burlington, Oakville to the CN Tower and almost heaven. Call John Weide



**DREAM HOME \$379,900**  
Just listed in Glen Abbey, backs onto park. Thousands spent in upgrades. Dream kitchen, 4 bedrooms. Huge eat-in area + dining room, main floor family room. Immaculate. Approx. 3,000 sq.ft. Call John Weide for viewing 844-5000.

Feature House of the Week The Canadian Champion  
 Don't miss out! Book today! Call Kathy at 878-2341  
 IT'S EXCITING, NEW AND WILL SOLELY BE SOLD ON A FIRST COME, FIRST SERVE BASIS.