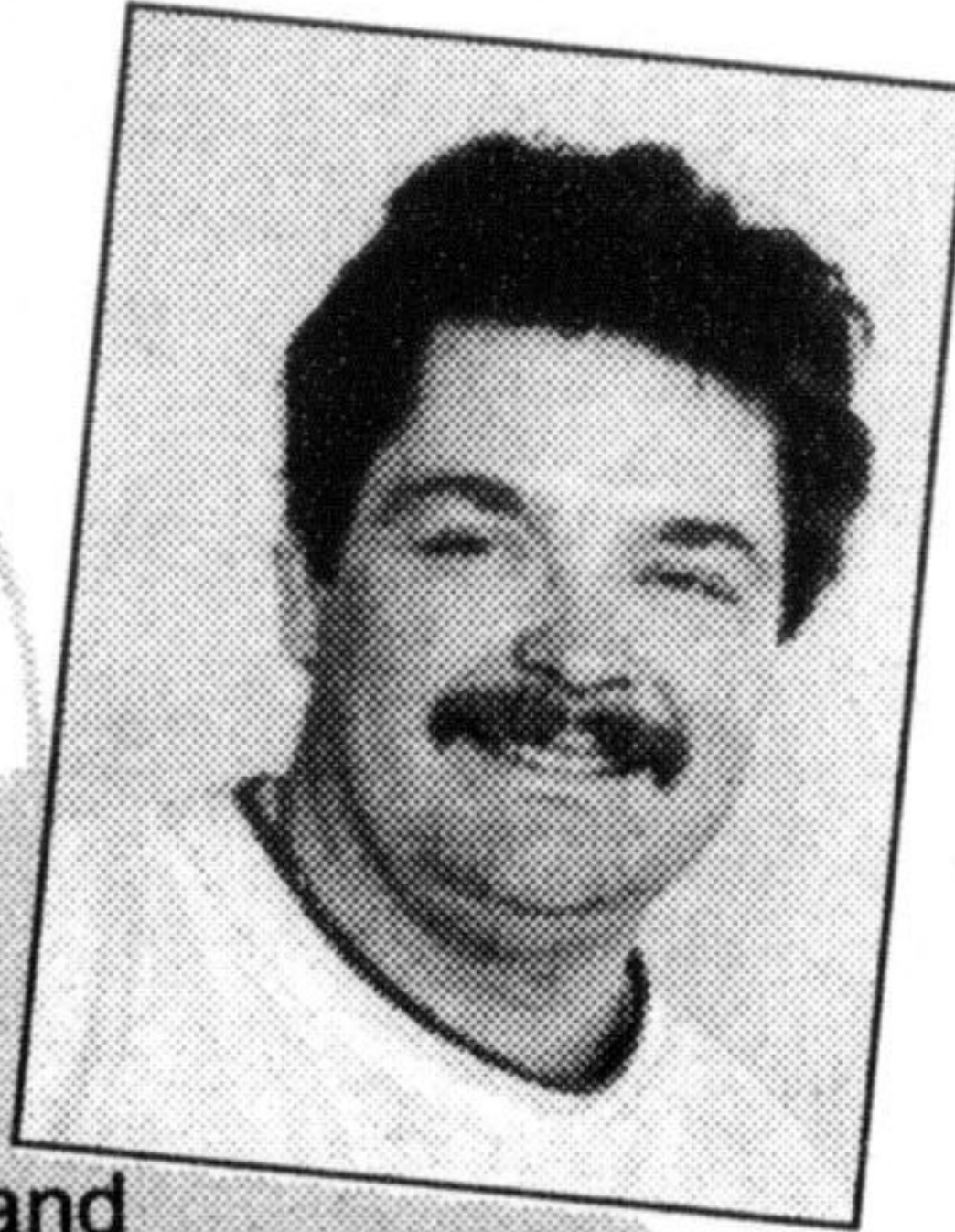


More rides at Bronte Creek

Bronte Creek Provincial Park has increased the number of horse-drawn wagon tours that are being offered this year and there are still a few spots left. The times and dates available are: Friday, Dec. 11 at 6:30 p.m., Sunday, Dec. 13 at 11 a.m. and 1 p.m., Friday, Dec. 18 at 6:30 p.m. and Sunday, Dec. 20 at 11 a.m.

Pre-registration is required for these rides and can be done by calling 827-6911, ext. 221. Fees are \$5 per adult and \$3 per child. This does not include park admission. The park is just north of the QEW on Burloak Drive.

Thanks Milton ... Join Us In Celebrating Our 11th Anniversary!



Well, here we are again, celebrating our eleventh year of business serving Milton and surrounding areas.

It all started Dec. 8th, 1987 with two bays at the Sunoco gas station, and a long wait to have a chance at taking over our present location (formerly Standard Auto Glass). Our new location, of four years, boasts a very comfortable waiting/reception area, plus six service bays, all of which are updated on a regular basis with the latest in equipment and technology available.

Well, you might not believe this, but it's happened again. In order to keep up with technology and provide the absolute best full service facility, we've grown. In addition to another five service bays (same location), we are presently gearing up for the new Ontario Emissions Program, slated to start in the spring of 1999. With this additional equipment and training, we will be able to continue to provide a state of the art service facility.

In addition to another two thousand square feet, the door has been open to at least three more employees. This will allow us to provide quick and courteous service for you and your car or light truck and don't forget the minivans and sports utility vehicles.

It has always been my goal to provide quick, quality and honest service, to help make your auto repair experience as comfortable as possible. With our continued growth, I will continue to do my best to keep with this goal.

Because I have kept on top of the latest developments regarding the New Emissions Program, I am all too happy to discuss your concerns and expectations in the coming months, when it comes time to have your vehicle tested in order to get your next license plate renewal. Just a little note, if you are one that has taken very good care of your vehicle, with proper maintenance, chances are you will pass on the first test. According to the information I have received, only 20-25% have a failure and usually, only minor repairs and maintenance is required.

Well, in closing, I would like to thank you all for your continued support, as well as, wish you a safe and happy holiday season.

Introducing

GOODYEAR



- GOODYEAR TIRES
- SAFETY CHECKS
- BRAKES
- 2/4 WHEEL ALIGNMENT
- COOLING SYSTEM SERVICE
- ENGINES
- OIL, LUBE & FILTER
- COMPUTER ANALYSIS
- TUNE-UPS
- SOON TO COME: EMISSION TESTING
- EXHAUST
- SUSPENSION SERVICE
- TIRE ROTATION & BALANCING
- GENERAL TIRES
- TRANSMISSIONS & SERVICE
- ELECTRICAL
- AIR CONDITIONING
- SHOCKS & STRUTS
- TOWING

FOR ANY VEHICLE MAINTENANCE OR SERVICE,
YOU CAN DEPEND ON US!

Brian's

Auto Repairs & Tire Centre
For all Your Auto Needs!

390 Ontario St. N. Unit #1, Milton
HOURS: Mon. - Fri. 7-6, Sat. 8-12 except long weekends

875-1522

Neighbours want some space from retail outlet

By IRENE GENTLE

The Champion

Some residents of 100 Millside Drive are feeling a little fenced in these days.

They claim that the expansion of a gravel parking lot at 57 Martin Street has damaged a wrought iron fence at the Millside condo building.

The lot has been expanded in hopes that the residential zoning of the Martin Street property will be changed to allow A Country Mile, now located at Carriage Square Mall, to take up residence there.

Currently the area is zoned residential, with the option to convert homes into offices.

Town staff have yet to make a detailed report on the matter.

Still, that hasn't eased the reservations of those neighboring the property, which was formerly a two-storey home, the Town's administration and planning committee heard last week.

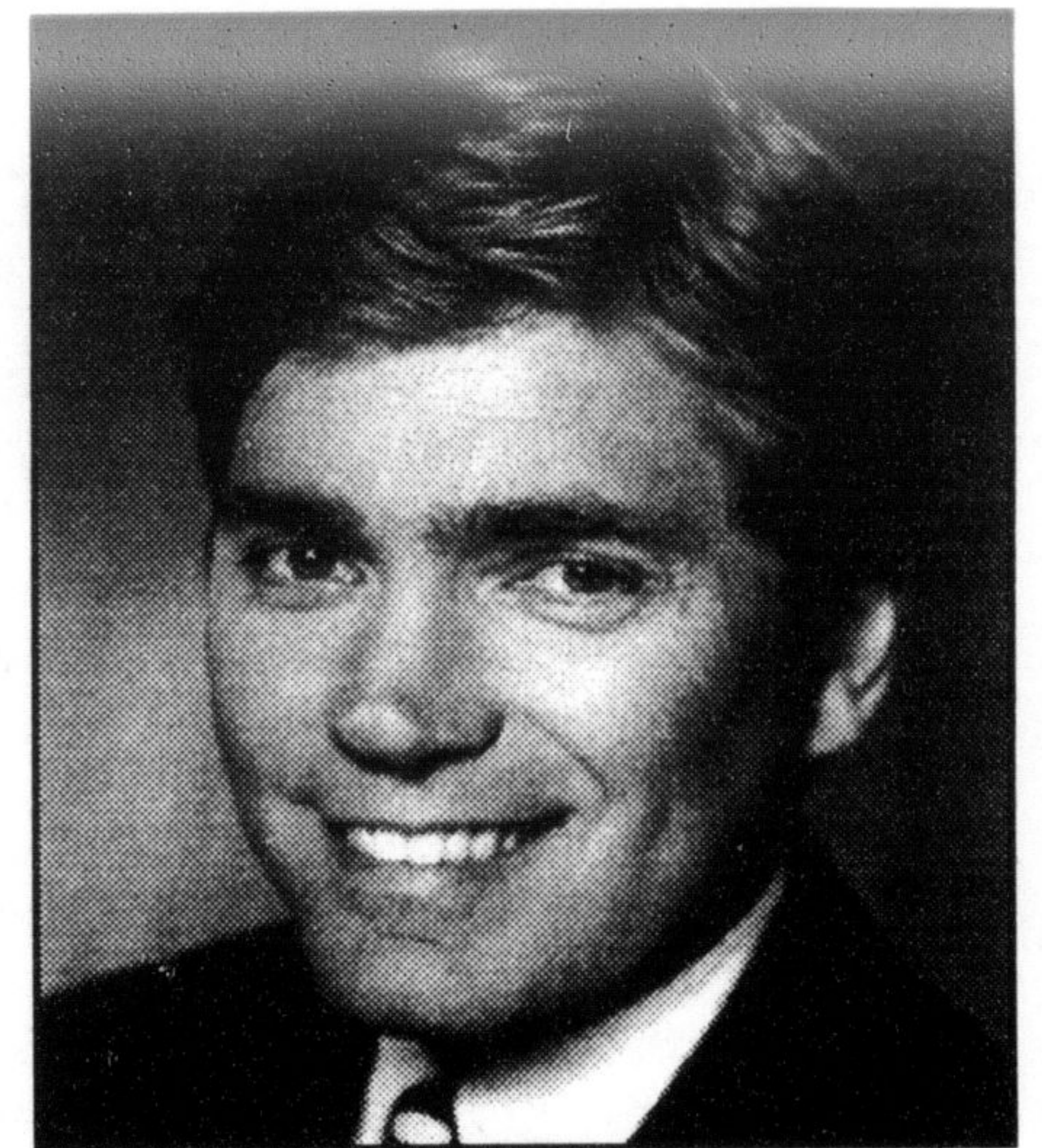
"We're not here to oppose the rezoning application. I'm here to voice certain concerns," said Randy Bailey of the Halton Condo Corporation.

Mr. Bailey asked that the fence be protected by having the parking lot set back slightly from the fence.

Mr. Bailey also recommended that a six-foot privacy hedge be planted to keep traffic noise away from the condo's parkette area.

Millside Drive resident Glen Gordon appeared before the committee to request that any rezoning come with the condition that drainage from the property in question be re-routed to run into the street.

He said at present it runs onto the



John Challinor

Millside property.

He also asked that garbage pick-up be limited to business hours only.

A Country Mile isn't about to pack its stuff and move soon, assured Councillor John Challinor.

"Don't go away thinking that this is a done deal because it's far from it. It's early days yet," he said.

"You and the condo association have the opportunity to have input."

While the property is just steps away from downtown, a retail operation just doesn't belong in 57 Martin Street, said David Craig.

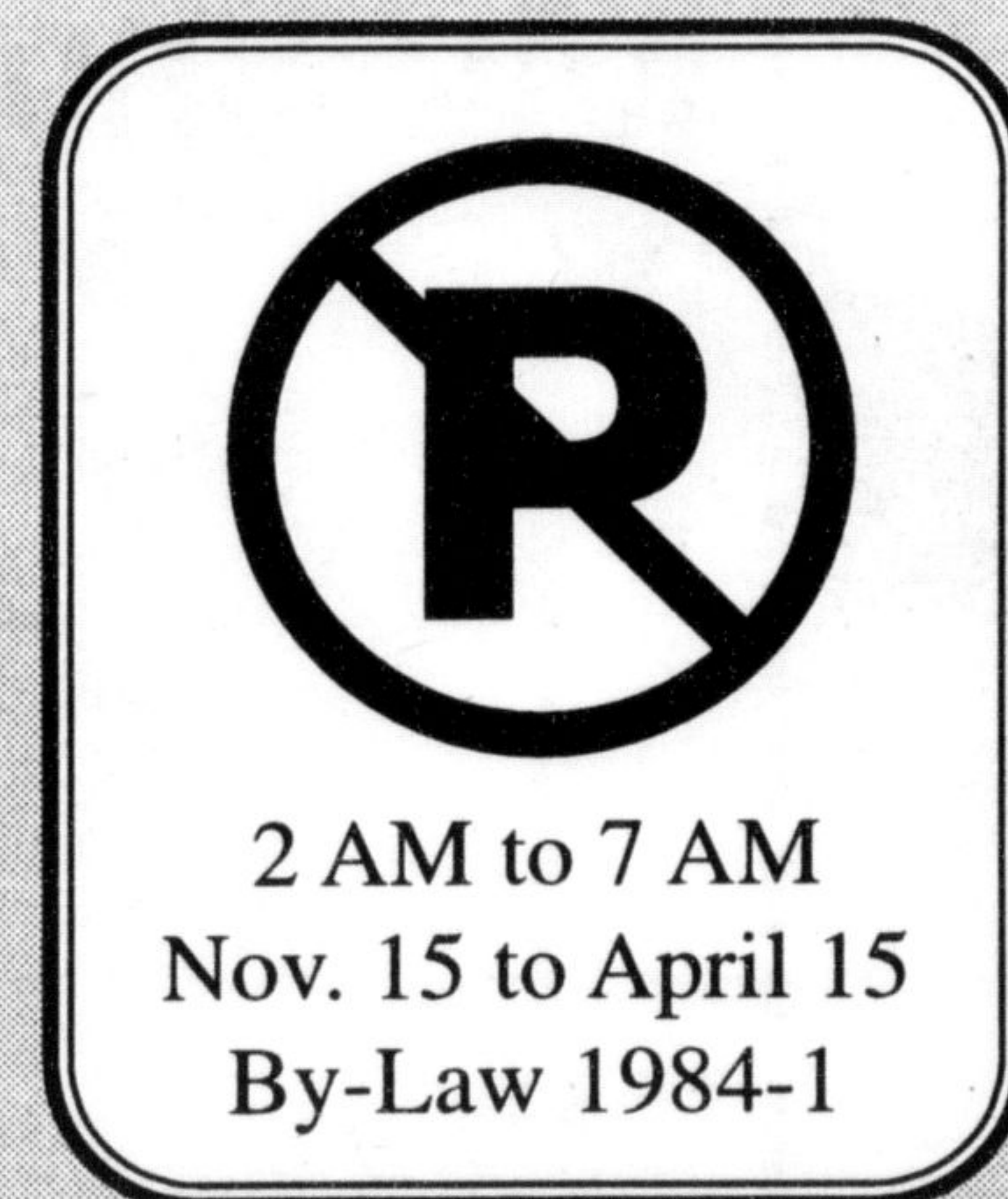
"The area is primarily apartments and condos," said Mr. Craig, who lives at 82 Millside.

"A retail use would be akin to a fish out of water."

Town staff will come back to the committee with a report in the new year.

THE CORPORATION OF
THE TOWN OF MILTON
TY: 878-1657 878-7211
MILTON IS NOW ON-LINE
<http://www.town.milton.on.ca>

NOTICE TO VEHICLE OWNERS



By-law 1984-1 prohibits parking on any Town street during the winter months from November 15 to April 15, between the hours of 2:00 a.m. and 7:00 a.m.

This By-law is intended to assist Town works crews in our effort to remove snow during the winter months.

While this By-law is in effect, Halton Regional Police will take appropriate measures to assist us which can include towing.

Your cooperation is requested.

Public Works Department
TOWN OF MILTON

Please help the less well off. Back the Xmas Drive by this paper to help all Milton kids and families enjoy a good holiday.

Drop off donation cheques to the Salvation Army Christmas Bureau Fund at 191 Main Street E., or simply put them thru the front door mail slot if the office is closed.