

**SELECT HOME DESIGNS**

*Design For Living*



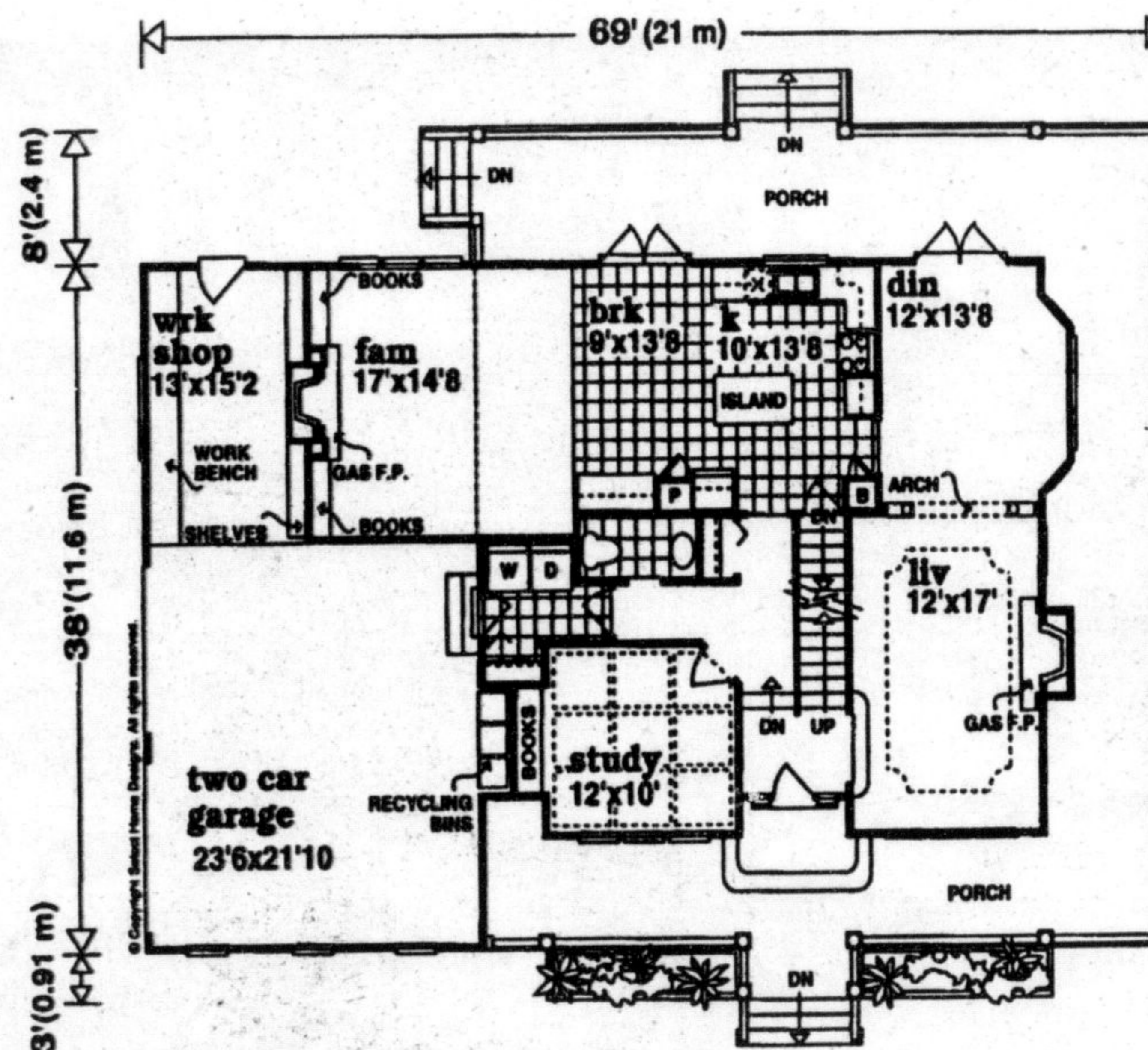
©Copyright Select Home Designs. All rights reserved

**Plan No. 2197-2428**

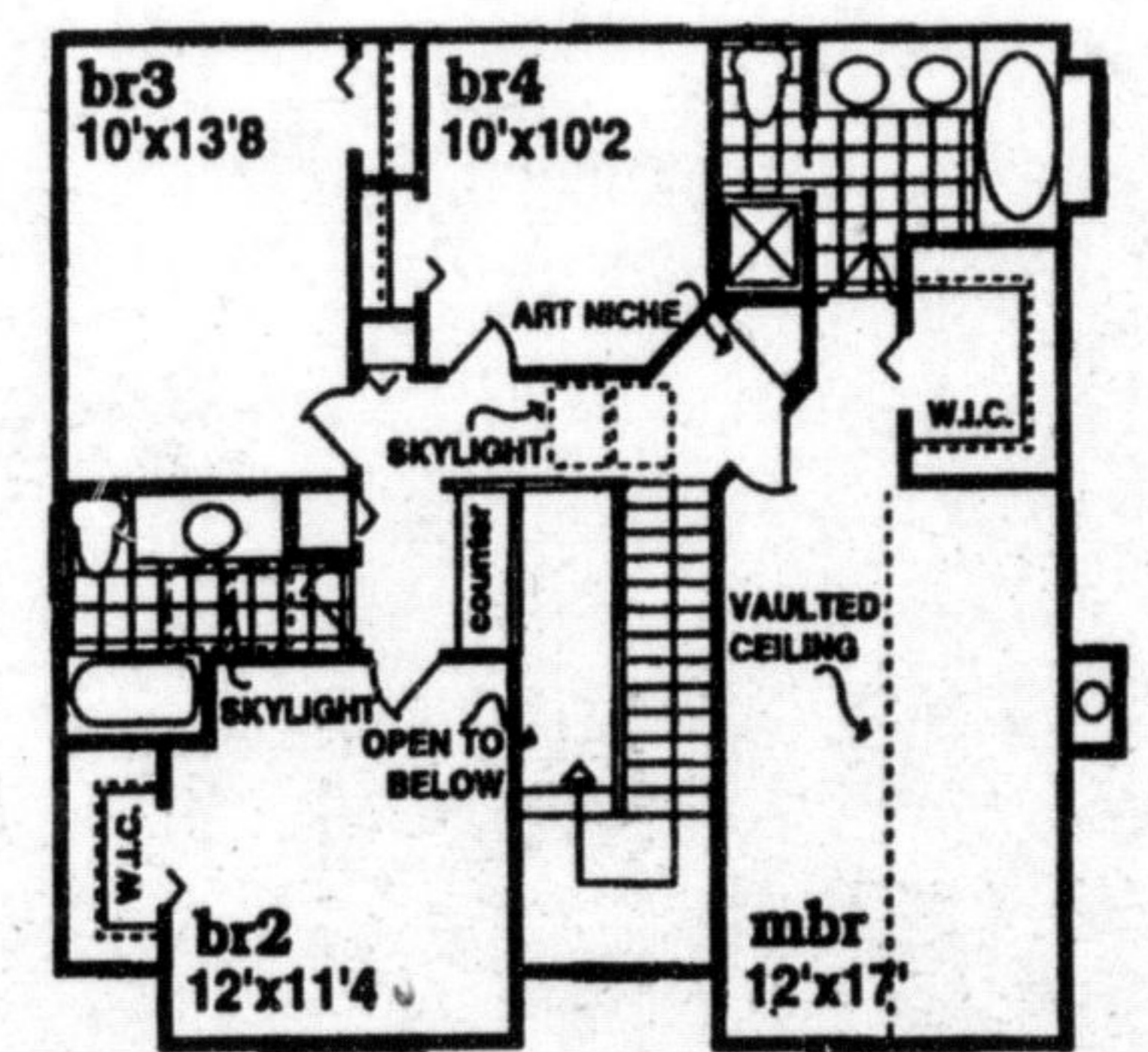
# VERANDAH SURROUNDS

©Copyright SELECT HOME DESIGNS

- Large wraparound porch provides a convenient outdoor retreat from any area of the first level.
- Raised foyer spills to a fireside living room, with unique ceiling detail, and to the bay windowed dining room beyond; An archway and decorative columns visually separate the living and dining rooms.
- French doors open from the breakfast and dining rooms to the spacious porch. Extra space for entertaining is easily accommodated.
- Well-appointed kitchen offers a center preparation island, spacious counters and breakfast room. Family room, with fireplace feature wall adjoins the kitchen.
- Workshop, off the two car garage, is a handy man's delight with workbench and built-in shelves.
- Study or in-home office has a beam ceiling and wall of book shelves.



**first level 1335 sq.ft.**



**second level 1093 sq.ft.**

- Master bedroom enjoys a vaulted ceiling, walk-in closet and sumptuous bath with twin vanities, shower and whirlpool spa.
- Three additional bedrooms, each with spacious closets, share a skylit main bath.

To receive a 300 page plan book for only \$9.95 (including shipping and GST) featuring this design and more than 400 other beautifully illustrated home and cottage designs, e-mail to: [selecthomedesigns@msn.com](mailto:selecthomedesigns@msn.com) or use our website at [www.selectaplan.com](http://www.selectaplan.com) on the internet (specify newspaper name) or call 1-800-663-6739 or fax (604) 251-3212. We accept Visa/Mastercard/AMEX. For payment via cheque or money order, make payable to Design for Living, c/o this newspaper, send to #301, 611 Alexander Street, Vancouver, B.C., V6A 1E1.