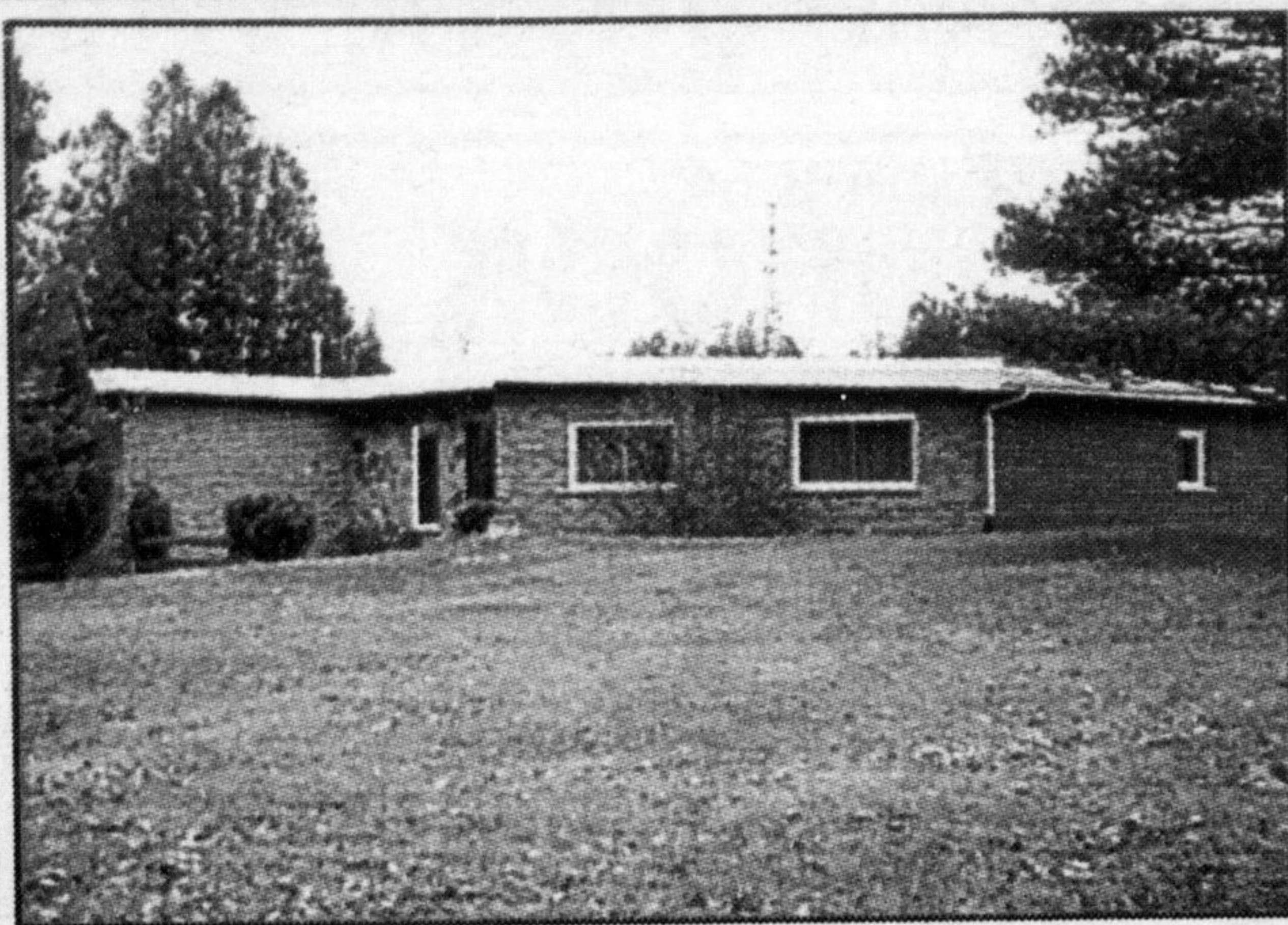


The Canadian Champion

BEST HOMES

MILTON/CAMPBELLVILLE

878-2341 November 10, 1998

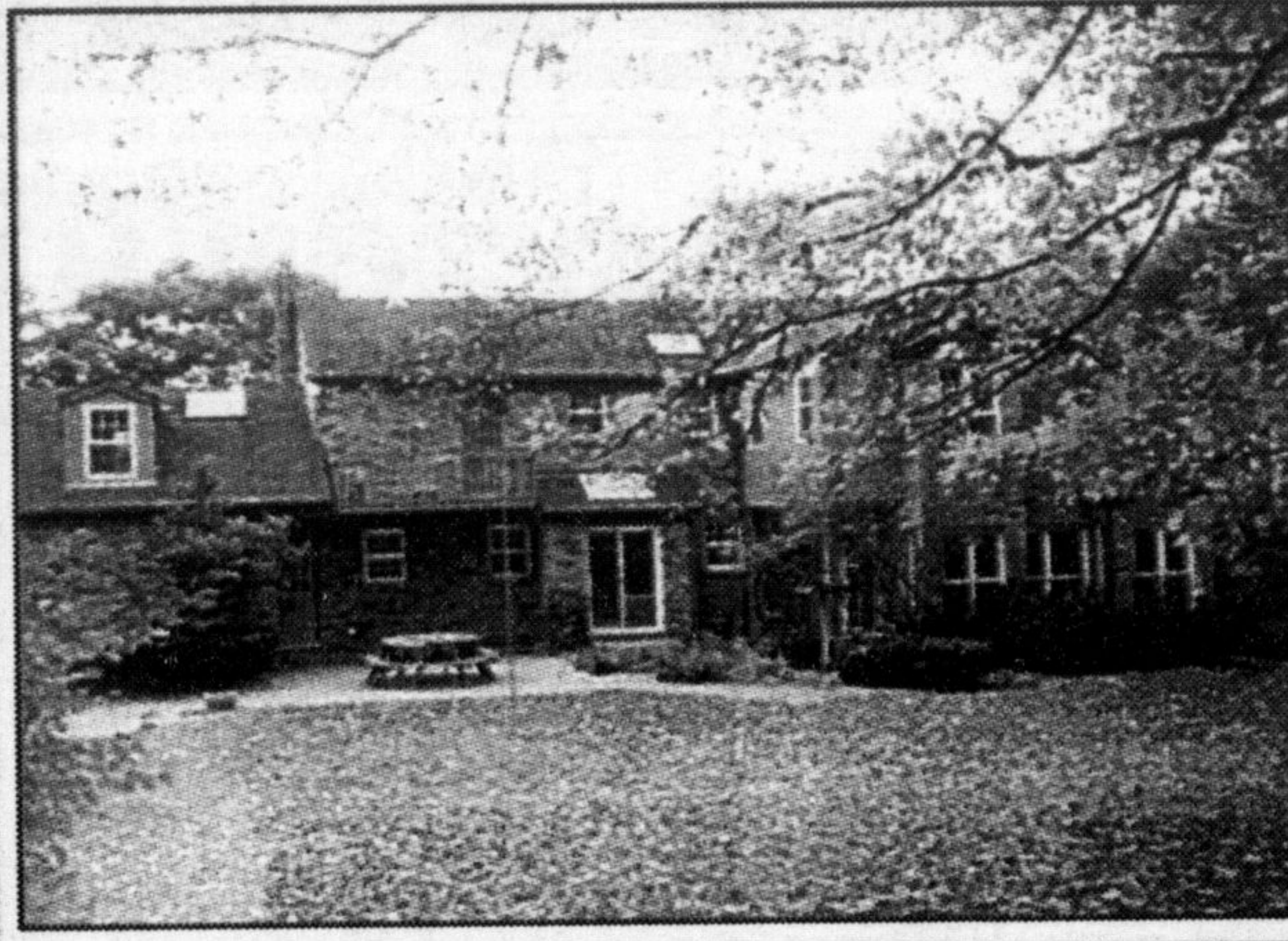


\$392,000

ROYAL LEPAGE

EXECUTIVE CUSTOM BUILT COUNTRY HOME. Nestled on 10 spectacular acres with 3 acres manicured & landscaped, 7 acres of mixed forest, pond & creek. This unique home features large principal rooms, pegged oak floors, skylights, etc.

ROYAL LEPAGE REAL ESTATE SERVICES LTD.
INGE WINTHER, Sales Rep. 878-8101



\$449,000

ROYAL LEPAGE

2 BEAUTIFUL ACRES. Adjacent to woods & 16 mile creek. Maples and Pines are the backdrop for this "Williamsburg" executive home. Wood floors, 2 fireplaces, inground concrete pool, gas furnace, 5 bedrooms, 4 baths. Ideally located just min. to 401 (James Snow or Trafalgar Rd.) What an opportunity! (Rear view photo).

ROYAL LEPAGE REAL ESTATE SERVICES LTD.
VIRGINIA BRAZEAU, Sales Rep. 878-8101



\$379,000

ROYAL LEPAGE

BEAUTIFULLY RESTORED. This historic 1 1/2 storey 1858 stone schoolhouse has been beautifully restored with the 2nd floor carefully renovated with large dormers creating 3 large bedrooms & 2 baths. Large principal rooms, oak floors, massive fireplace etc. Treed lot.

ROYAL LEPAGE REAL ESTATE SERVICES LTD.
INGE WINTHER, Sales Rep. 878-8101



\$159,900

RE/MAX®

HOT OFF THE PRESS. 2 bedroom bungalow in Bronte Meadows. Large master, large rec. room, treed fenced yard. Great starter retirement home.

RE/MAX BLUE SPRINGS REALTY (HALTON) CORP.
ANNE TAYLOR, Asst. Broker, 878-7777



\$289,900

Century 21

JUST LISTED. This historic Georgian style home is located on a beautiful setting at the north side of the Mill pond. It's solid stone construction, oak floors and antique fixtures must be seen to be appreciated. Call for your private tour.

CENTURY 21 REALTY PROFESSIONALS INC.
JAMES SNOW, Sales Rep., 875-1110



\$359,000

ROYAL LEPAGE

A RARE FIND! Unique and charming country home on a gorgeous 1.35 acre property overlooking a springfed pond. Completely private setting, yet only mins. to Hwy #401 and Campbellville. 4 bedrooms, 2 1/2 baths, Main floor den. A must to view!

ROYAL LEPAGE REAL ESTATE SERVICES
PETRA SCHWABE, Sales Rep., 878-8101



\$1,100,000

ROYAL LEPAGE

SPECTACULAR EXECUTIVE COUNTRY ESTATE 5,000 sq. ft. manor on 19 acres with woods, flowing creek and English country gardens. Just 3 mins. to Trafalgar Rd. & 401. Quality built in 1993 with utmost attention to detail. Hardwood floors of cherry, walnut, etc. throughout, 2 fireplaces, extra high ceilings, cove moulding, gourmet kitchen. 2,500 sq. ft. finished lower level with in-law bed/bath, rec. rm and walkout. Separate indoor pool. Must see to fully appreciate.

ROYAL LEPAGE REAL ESTATE SERVICES
VIRGINIA BRAZEAU, Sales Rep., 878-8101



JUST LISTED

ROYAL LEPAGE

SEE AND SIGH! Only mins. from Hwy 401, lies this luxurious custom built executive home on 1.63 acres. Features gorgeous oak strip flooring, bleached oak gourmet kitchen, 2 fireplaces, 2 jacuzzi's, 4 bdrms, 3 car garage. Shows a 10+.

ROYAL LEPAGE REAL ESTATE SERVICES
CAROLE BUDWORTH, Sales Rep., 878-8101