

The Santa Claus parade can only continue if the public supports it. Please donate on parade day. No tax dollars are spent for this event.

Dateline

• from DATELINE on page 17
cost of the series is \$25 per family. To register or for more information, call 693-4270.

The Trillium Photographic Club hosts the CAPA Individual Colour Competition — live judging of cross-Canada entries — at 8 p.m. The event takes place at East Plains United Church, 375 Plains Rd. E., in Burlington at 8 p.m. Everyone is welcome. For more information, contact Marilyn Chayka at 634-7755.

Kilbride Area Preschool, located behind Kilbride Public School, starts registration for the winter session, which runs from January to June. The centre offers

half-day fun programs on Tuesdays and Thursdays from 9 to 11 a.m. and 1 to 3:30 p.m. for preschool children. For more information, call Hope at 876-4570.

The Milton Fibromyalgia Support Group meets at St. Paul's United Church, 123 Main St. E., at 2 p.m. For more information, call 878-4371 or 878-6096.

Wednesday Nov. 4

Free workshops on interview skills and the hidden job market are offered at the Milton Resource Centre, 310 Main St. E. The weekly 'Learn How to Sell Your Skills' (9:30 a.m.) and 'Find Out Where Most of the Jobs Are' (1 p.m.) workshops

are about three hours in duration. For more information, call the centre at 876-9828.

The Milton Community Resource Centre, 917 Nipissing Rd., hosts Kids' Connection from 1 to 3:30 p.m. The Wednesday drop-off program for infant-aged children to five-year-olds encourages children to play on their own. Call 876-1244, ext. 10, to reserve a space.

Thursday Nov. 5

The Canadian Federation of University Women — Milton and District — invites all university women graduates to attend 'To Graz and Back' presented by Roberta Brooks, secretary to the IFUW

conference. The event takes place at Hugh Foster Hall at 7:15 p.m. For more details, call 336-5519.

The Milton Seniors' Activity Centre, 500 Childs Dr., holds Senior Cinemas at 1:30 p.m. Call the centre at 875-1681 for feature performances.

Friday Nov. 6 - 7

The Milton Players Theatre Group presents Ten Little Indians by Agatha Christie in dinner-theatre format at the Milton Seniors' Activity Centre, 500 Childs Dr. Tickets are available at Peggy's at Milton Mall and at Delacourt's on Main Street. For information, call 875-0629.

Saturday Nov. 7

The Milton branch of the Canadian Red Cross Society presents its annual fundraiser Grapes 'n Hops at Bishop Reding Secondary School, 1600 Main St. E., from 7:30 p.m. to midnight. Patrons can sample some of Canada's finest wines and microbrewery beers. Entertainment is provided by the Thornhill Swing Band and a disc jockey. Tickets, which cost \$20 in advance or \$25 at the door, can be purchased by calling the Red Cross office at 875-1459. Admission includes a light buffet.

Boston Presbyterian Church on Third Line, just south of No. 5 Sideroad, holds a bazaar featuring bake tables, crafts, knitting, deli and soup or chili lunch from 10 a.m. to 1:30 p.m.

St. Paul's United Church, 123 Main St., holds its annual Village Fair from 10 a.m. to 2 p.m. The event features crafts, crocheting, meat pies, knitting, mincemeat, 'Kid's World' and more. A hearty country lunch is available from 11 a.m. Admission is free and everyone is welcome.

The School Advisory Council and baseball team at the Ernest C. Drury School for the Deaf co-host a used book sale in the senior auditorium at 9 a.m. Books of all kinds — romance, thrillers, children's, sports and suspense — are available. Proceeds go to classrooms and baseball equipment.

The Milton Community Resource Centre, 540 Childs Dr., hosts 'Dad and Me' — a drop-in program for children aged under 5 years — from 9:15 to 11:15 a.m. The cost is \$2.

Sunday Nov. 8

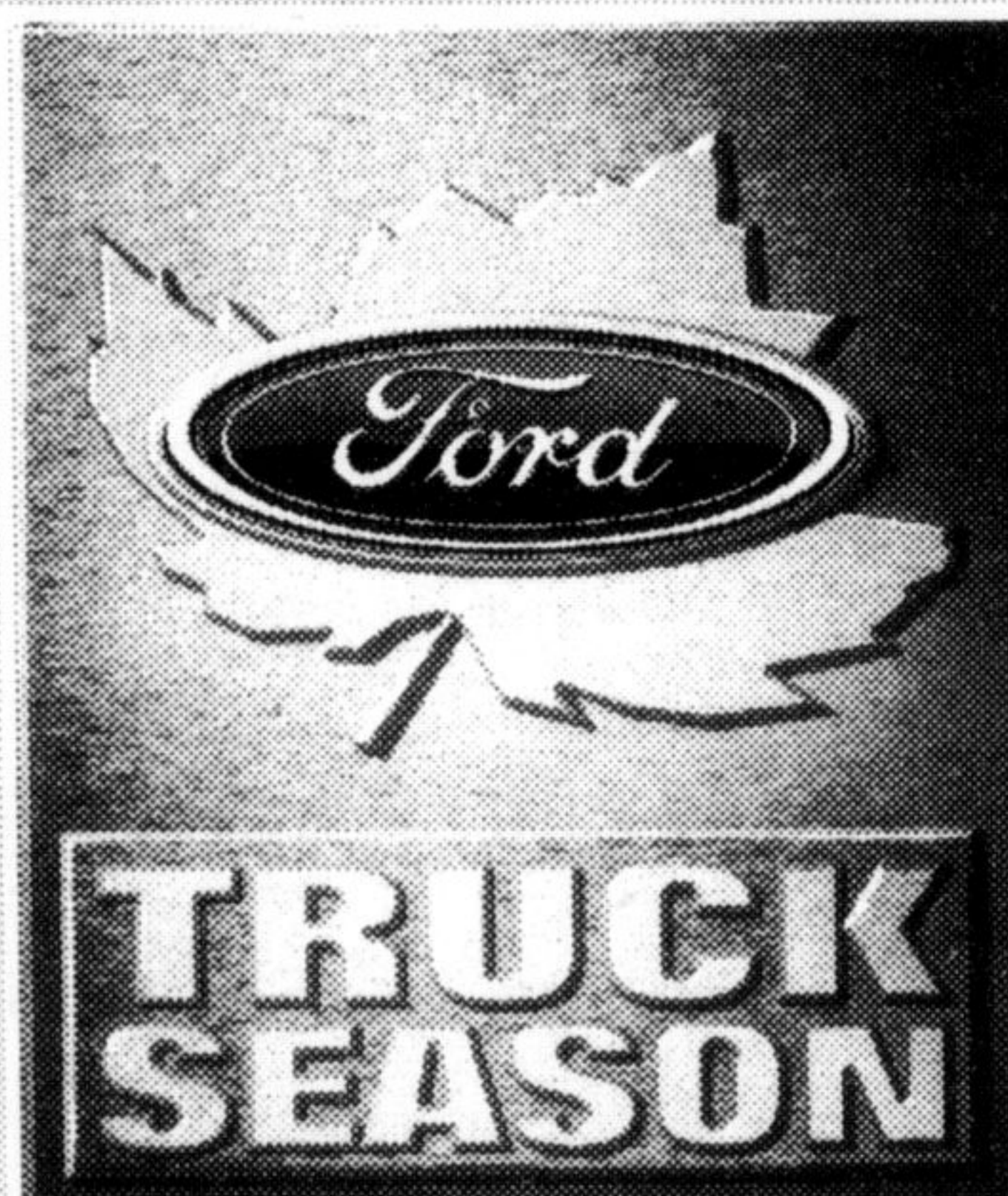
The Halton Cross Country Ski Club's Annual Ski Swap and Sale takes place at Nelson High School, 4181 New St., in Burlington. Up for grabs are both alpine and cross country ski equipment and clothing — new and used. Patrons can bring their equipment to sell (club fee 15 per cent of receipt) from 9 to 10:30 a.m. The ski swap and sale runs from 10:45 a.m. to 3 p.m. Checkout time is from 3 to 4 p.m. Admission is free.

Monday Nov. 9

The Osteoporosis Support Group of the Oakville Bone Centre meets at St. Michael's Church, 181 Sewell Dr., in Oakville at 1:30 p.m. A guest speaker discusses bone densitometry. For more information, contact Phyllis Spillone at 829-4863 or Kay Duncan at 827-6750.

Larry McIntyre of Great Canadian Travel Tours presents Travelogue at the Milton Seniors' Activity Centre, 500 Childs Dr., at 1:30 p.m. Seniors are invited to hear details of the line-up of overnight trips during the winter travel season.

The Milton Community Resource Centre, 540 Childs Dr., holds a drop-in for infant-aged children to five-year-olds to play with parents and caregivers from 9:15 to 11:15 a.m. or 1 to 3 p.m.



Introducing 1999 F-Series XLS 4x2 Supercab.

The **ONLY** full-size pickup with standard 4 doors.

With more standard horsepower than 1999 GM and Chrysler pickups.

- Includes Air Conditioning
- Automatic
 - AM/FM Cassette
 - Pickup Box Security Package
 - Chrome Bumpers

Plus the Value Added XLS Package:

- Polished Aluminum Wheels
- Colour-keyed Bodyside Mouldings
- 40/60 Cloth Split Bench-Seats

Or choose the value of the 1999 F-Series XLS 4x2 Regular Cab.

Includes Air Conditioning, Automatic plus the Value Added XLS Package.

WE HAVE THE RIGHT LEASE PAYMENT FOR YOU.

Regular Cab Monthly Payment	Supercab Monthly Payment	Down payment or equivalent trade
\$278	\$327	\$3,500
\$299	\$348	\$2,900
\$348	\$397	\$1,500
\$402	\$451	\$0

Canada's Best-Selling Full-Size Pickup[†] now with

FOUR DOORS AND MORE.



Introductory Lease Offer

\$348*

30-Month Lease with \$2,900 Down payment



\$49* Less A Month

\$299 per month 30-Month Lease with \$2,900 Down payment

Ontario FORD Dealers

WISE BUYERS READ THE LEGAL COPY. *New 1999 F-Series XLS Supercab/Regular Cab 4x2, monthly lease payment of \$348/\$299 based on 30-month lease from Ford Credit to qualified retail lessees, on approved credit. Some conditions and a mileage restriction of 50,000 km over 30 months apply. \$2,900 down payment or equivalent trade required. First month's payment and security deposit required. Freight (\$940), licence, insurance and all applicable taxes are additional. Dealer may lease for less. Limited time offer. Offers may change without notice. †Based on 1997 calendar year manufacturer reported deliveries. See dealer for full details. Ontario FMDA, P.O. Box 2000, Oakville, Ontario L6J 5E4