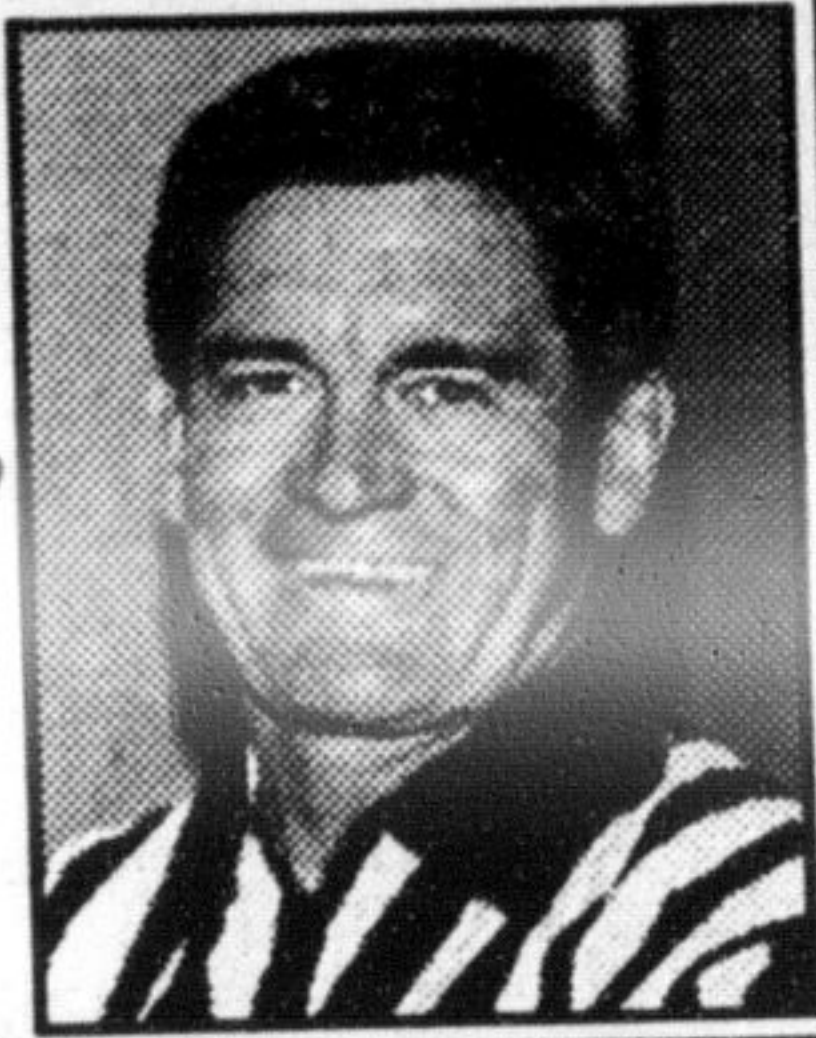


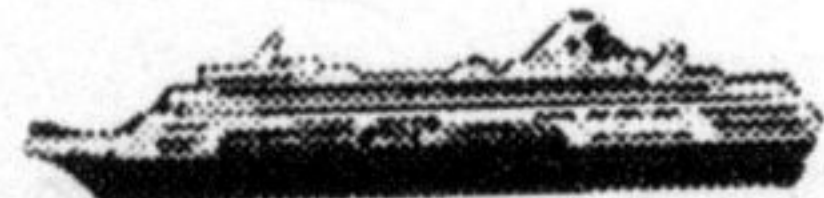
Travel

with *Bruce Hood*

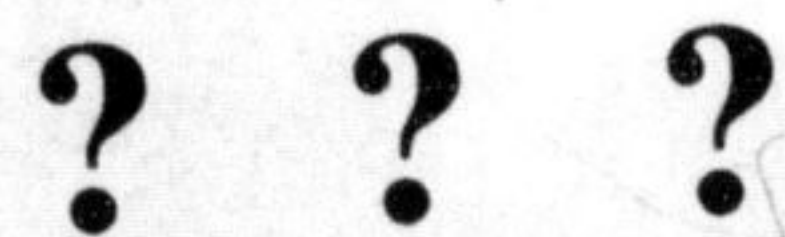


NO, YOU WON'T GET SICK - ON A CRUISE!

ON THE WEEKEND, WE SPOKE WITH FOLKS WHO HAVE NEVER BEEN ON A CRUISE. Although they like to travel a lot — they said they'd probably get sick on a cruise, so have avoided them! Well, as we told them and are here to tell you now, that it is possible for you to get sick on a cruise, just as you can anywhere including right at home — but it is highly unlikely it will be the 'MOVEMENT OF THE SHIP' which will make you ill! Just as we have said in the past that it is HIGHLY UNLIKELY YOU WILL BECOME ILL BY VISITING MEXICO — the same applies to a cruise ship. The 'former tales of woe' do not apply in either instance, as times have changed — the ships are larger, have 'stabilizers,' are built more 'passenger comfortable' than many years ago. Just as in Mexico, there are better precautions now re the use of proper drinking water. (Oh sure, never say never, almost anything is possible — but the average is very much in favour of a good, memorable time, minus sickness!)



AS FOR THOSE CRUISESHIPS, you can't believe what is out there for you already, and what is coming your way! How about a 12,000 passenger cruiser which would never see land (no port large enough!), but would float the oceans and seas and act as a mother ship for a fleet of smaller ships to go to the ports! More realistic at the moment, is the new **DISNEY MAGIC CRUISESHIP** — you know they do everything bigger and better — their ship is three football fields long, is as wide as an eight lane expressway, and carries 2,400 passengers! **THERE ARE LARGER SHIPS AND THERE ARE SMALLER,** as we said, with **AN AMAZING VARIETY OF ITINERARIES.** One we like is from **ROYAL CARIBBEAN** — it will have its own 'skating rink' when launched next year!



DID YOU KNOW: Last week we referenced being turned back at Fort Erie when going to referee because of having no 'work visa' — went to Niagara Falls and crossed over as 'tourist' — no problem, went and refereed!



TRAVEL TIP OF THE WEEK: Compare a cruise with a resort vacation, at your travel agency professionals — good value!

The Way To Go!
Bruce Hood
Travel

Professional Travel & Cruise Officials

878-2886
16 Martin St.
(downtown)

Also in Halton Hills, Oakville and Clarkson
www.brucehood.com

Bringing The World To You Since 1961

Canine named Pumpkin getting lots of attention in Andrew singing act

• from POOCH on page 8

She has made herself about as busy as a young singer/actor can be. But it's her dog that is getting her all the attention.

"Pumpkin's career is really taking off here, but I don't know if it'll do much for me," she said philosophically. "It's a little weird being upstaged by my dog."

The competition sponsored by Advantage Flea Control was not Pumpkin's first foray on stage. In fact the canine companion has accompanied Ms Andrews on a number of her lighter, cabaret-type shows.

"She's always requested. At first people think the joke is that we look so much alike. She has orange fur and I have very naturally curly reddish hair. We both wear these little bows," she said.

When Ms Andrew lets loose that voice with a four-octave soprano range, it seems the puny pooch just can't resist joining in.

"She does it no matter what I'm singing. No matter where," she said.

The toy's talent was discovered accidentally when Ms Andrew was warming up in her car for a gig in Hamilton.

"I heard this squeal. I thought I had hit something," she recalled.

Shaken, Ms Andrew pulled over. When everything look fine, she climbed back in and resumed singing.

Once more, the pooch joined in.

Since then Pumpkin has made a duet of anything Ms Andrew sings. She will even sing along to a recording of Ms Andrew's voice.

It's a shtick, sure, pure show business. But it's a good shtick.

"You can just see the wave of reaction from an audience," said Ms Andrew. "She doesn't just

bark, she howls along, and we're both sopranos."

Still, the joke is wearing a bit thin for Ms Andrew, who has slain too many personal dragons to be sidetracked in her quest now by a popular pooch.

The first dragon came in the form of a virulent learning disorder that had Ms Andrew only pretending she could read until the age of 12. Even armed with all the tricks aimed at keeping people in the dark about her trouble, Ms Andrew found herself in remedial classes in her Waterloo school, side-by-side with people who had failed as many as three grades.

The problem was exacerbated by a family crisis. Her parents divorced. She stayed temporarily with her father. According to the law of the time, a child of divorce could choose which parent to live with at 13 years old.

Within a week of that birthday, Ms Andrew hightailed it to Milton, to be with her mother, Halton school Trustee Erica Andrew.

"Moving to Milton was the best thing that ever happened to me, other than my mother, who I think is just wonderful," she said.

In Milton, Ms Andrew had a chance for a fresh start at E.C. Drury High School. She got help for her learning disorder. It was in Milton where Ms Andrew also discovered she had a fine set of lungs. She's spent the time since then putting them to good use in the often crazy world of show business.



Lesley Andrew

"It can be a really bizarre career. A friend of mine auditioned eight times for Phantom of the Opera and didn't get a chance until she got a spiral perm," she said.

It can also be feast or famine. Two weeks ago, Ms Andrew cleaned houses to help meet the mortgage. Two weeks from now, she'll have been on Jay Leno.

Adding to the activity is a recent marriage to Franz Lehrbass, a former trumpet player in the orchestra with which the vibrant singer toured Europe.

These days Mr. Lehrbass has hung up his trumpet for a career as an audio engineer. He went back to school to land it, a thing that is frequently on the minds of people in the hardscrabble business of entertainment.

"I loved music but I never dreamed I'd make a career of it. Back then it was either singing or vet school," said Ms Andrew. "I thought by the time I'm 30 if I haven't made it, I could go back to school."

Her definition of success is simple — being able to go into a book store and buy a hardcover tome without caring about the price tag.

It's a realistic benchmark in a business where there are 10 women for every role being offered. That, combined with a trend for shows such as The Lion King and Beauty and the Beast, cut down opportunities for singers like Ms Andrew.

"They're doing what we call belter's shows. It's a different sort of style. It's sort of yelling," she said. "The burnout rate in them is pretty high. They often hire very young singers who end up three weeks after the show opens blowing their vocal chords."

In the meantime there's Leno and Donny and Marie, and a few solo concerts in November.

WE'LL MAP OUT YOUR INVESTMENT ROUTE and EVEN DO THE DRIVING.



INVESTMENT PLANNER PLUS - EASY, EXPERT INVESTMENT PLANNING.

You can settle in with comfort and confidence when Investment Planner Plus is driving your investments forward. If you have an investment portfolio over \$25,000, our expert investment consultants can help you maximize your potential return. They'll design a portfolio specifically for your needs and monitor it monthly to ensure that it stays on track with your investment objectives. All you have to do is sit down with one of our investment consultants for a detailed, personalized analysis of

your goals, attitudes towards risk, time horizons and performance objectives.

In short, it's personal, professional investment planning. And Investment Planner Plus is a reliable tool for contending with the volatility and unpredictability of today's financial markets. Best of all, it's offered at no cost, and available for both registered and non-registered plans. Drop by and we'll map out a plan to drive your investments further.

For details call 1-800-523-3300, or visit www.canadatrust.com

Canada Trust Mutual Funds

Investing can be this comfortable.

Investment Planner Plus and Canada Trust Mutual Funds are offered by CT Investment Management Group Inc., a Canada Trust subsidiary, by prospectus only. Obtain a copy at any Canada Trust branch and read it carefully before investing. Unit values will fluctuate. Mutual fund investments are not guaranteed by Canada Trust or insured by the Canada Deposit Insurance Corporation or any other government insurer.

St. John Ambulance

Is looking for volunteers in the Milton area.

The Georgetown brigade is currently providing first aid coverage for sporting and cultural events in this area. If we can get enough Milton area members in the Georgetown brigade, we will re-start the Milton brigade.

St. John Ambulance provides a valuable service for your community. You will receive advanced training in first aid and disaster relief. You will improve your leadership, communication and interpersonal skills.

If you are 17 years of age or older, call 905-877-7658 for more info. Meetings are held Tues. eves. 7 - 9 pm.

Maple Lodge FARMS LTD.
family entertainment presents

meadowvale theatre
professional series



Eric Nagler

November 8, 1998, 2pm
Eric Nagler has devoted himself to the art of making family music. A virtuoso on more than a dozen instruments from the well known to the truly bizarre, Eric speaks and sings a language of the heart and finds that children of all ages respond.

Salt Water Moon
November 7, 1998, 8pm

A romantic play starring Krista Jackson & Eric Woolfe by David French, produced by Douglas Beattie in association with Theatre Orangeville. The scene is Coley's Point, August 1926. Mary Snow stands on a summer house porch scanning the night sky with a telescope. Jacob Mercer watches from the road. Will his handsome ways win Mary back? It won't be easy but the night is on Jacob's side and the moon, "it's some lovely."

Single Show Tickets \$12.00
Family Pak (4 seats for one show) \$40.00
Single Show Tickets \$15.00 - \$22.50

order your tickets

- Call (905) 821-0090 Monday to Saturday, 12 noon to 4pm, and have your Visa or MasterCard ready.
- Fax the Box Office (905) 821-0959 anytime with credit card information.
- Come in person during Box Office hours, place your order with Visa, MasterCard, Interac or Cash and personally select your seats.

Meadowvale Theatre:
6315 Montevideo Rd. at Battleford Rd., Mississauga www.city.mississauga.on.ca/meadowvaletheatre