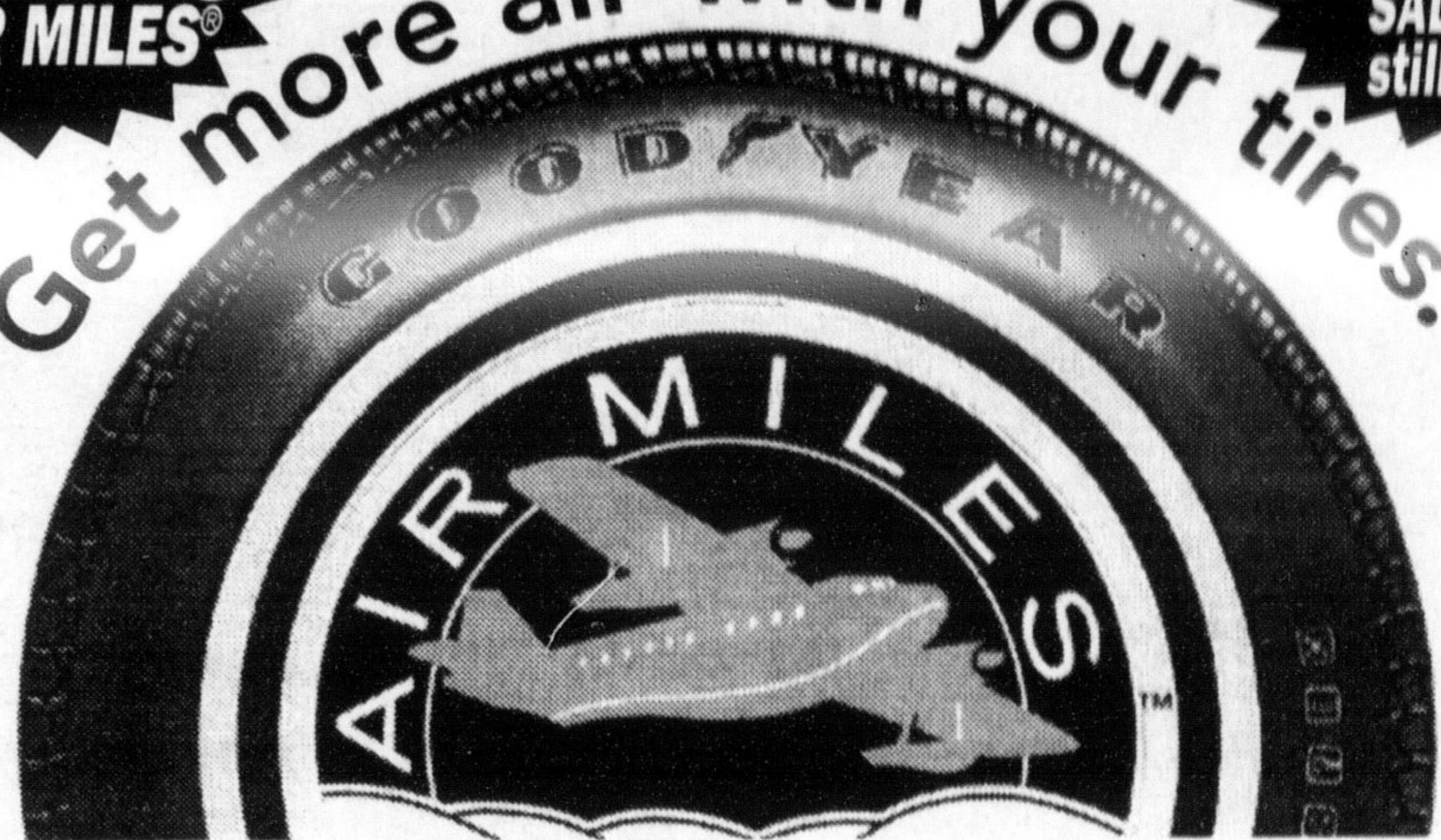


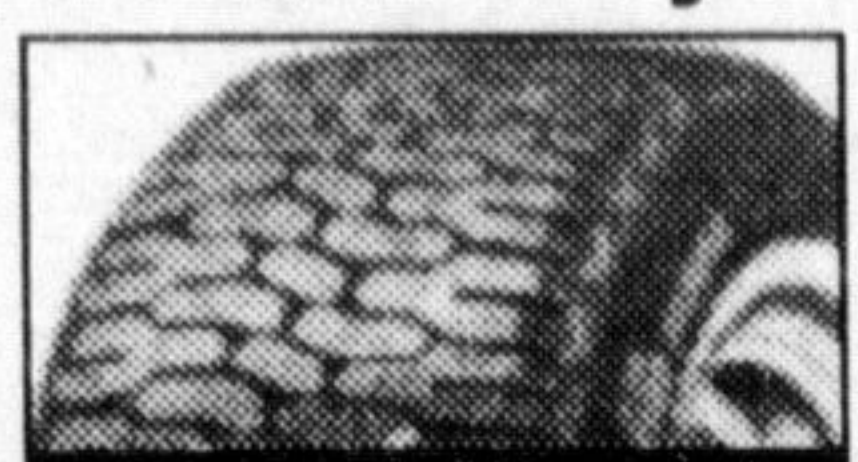
Introducing AIR MILES®
Get more air with your tires.
P.S. BLIMP SALE is still on!



Up to 300 Bonus AIR MILES®*
On selected Goodyear® tires



Infinitred
Our Longest Lasting Passenger Radial
300 BONUS AIR MILES®
on set of 4



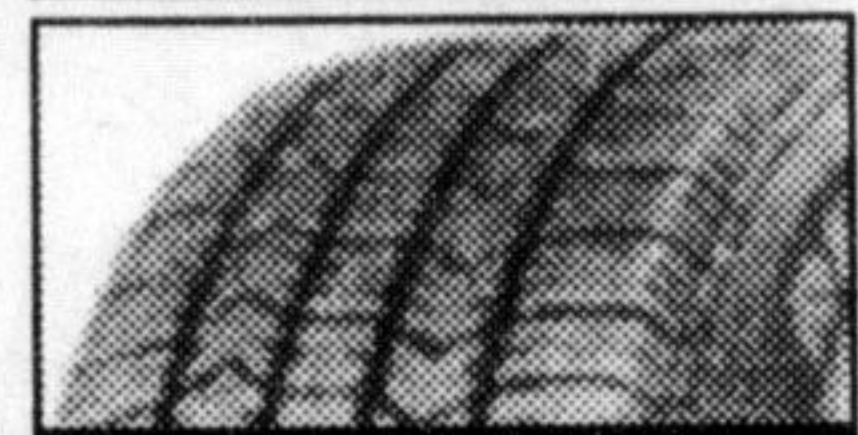
F-32
Ultimate Ice & Snow Radial
100 BONUS AIR MILES®
on set of 4



Wrangler AT/S
One of the Most Versatile Tires for Light Trucks
300 BONUS AIR MILES®
on set of 4



Eagle Ultra Grip
Premium High Performance for Exceptional Winter Traction
300 BONUS AIR MILES®
on set of 4



Regatta
Our Best All Round Radial
100 BONUS AIR MILES®
on set of 4

*See retailer for details.

*Earn 1 AIR MILE® reward mile for every \$8 spent at Goodyear. See participating retailer for details. Bonus AIR MILES® offer ends Dec. 12, 1998. **Trademarks of AIR MILES® International Holding N.V. Used under license by The Loyalty Group. All references to AIR MILES® include reward miles.

Brian's

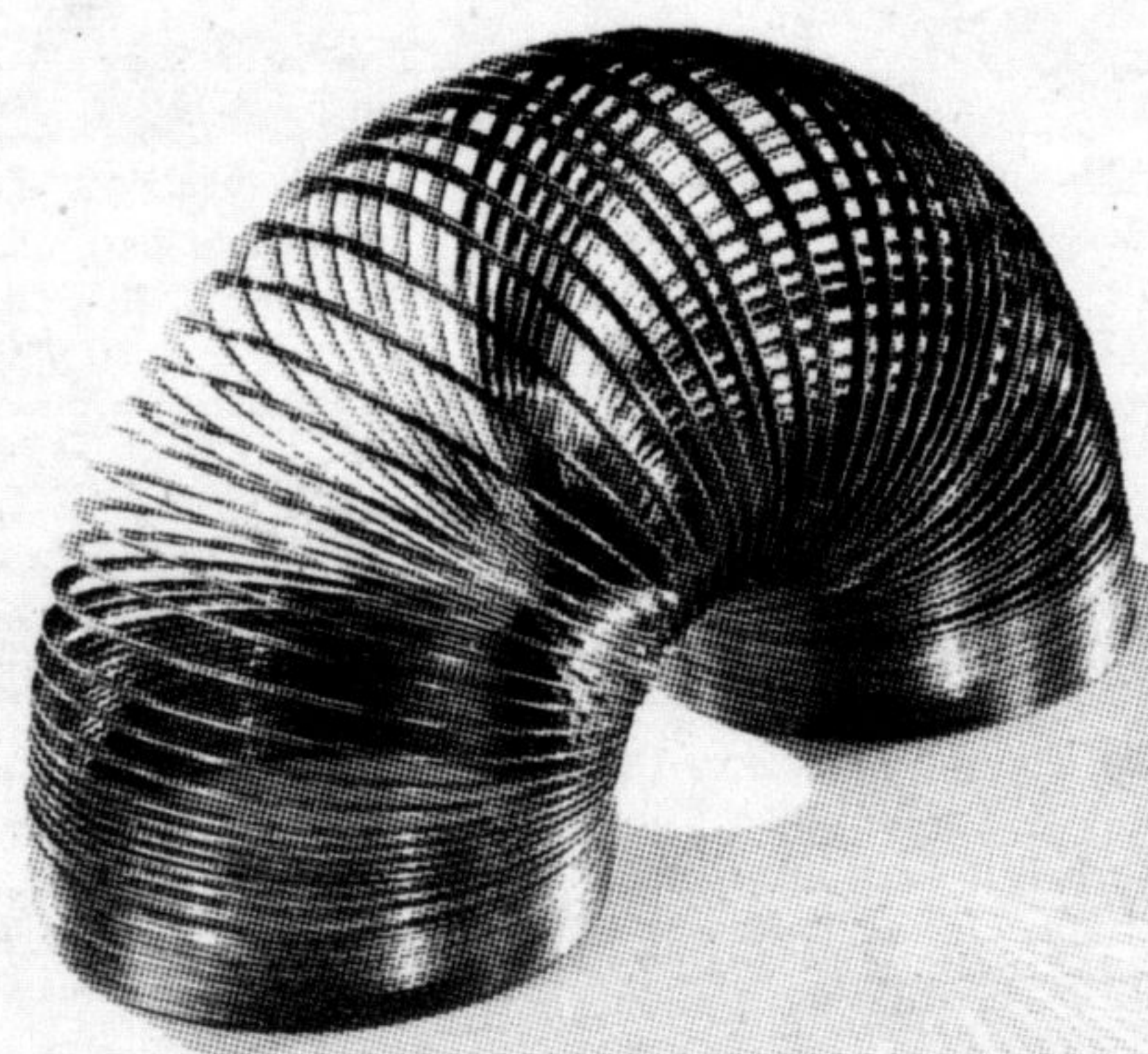
Auto Repairs & Tire Centre
For all Your Auto Needs!

390 Ontario St. N. Unit #1, Milton
HOURS: Mon. - Fri. 7-6, Sat. 8-12 except long weekends

875-1522



FLEXIBILITY.
IT'S THE KEY TO OUR
premium rate GICs.



Canada Trust 1+1 GIC	Year 1' 3.85%	Year 2' 5.25%
----------------------	------------------	------------------

Quarter Back GIC	3-Year Term' 4.70% per year
------------------	-----------------------------------

There's a secure place for your investment dollars where you can get premium rates, and the flexibility to access your money.

The Canada Trust 1+1 GIC* is a two-year certificate which offers a premium interest rate in the second year, and is fully or partially cashable or convertible on the anniversary date, without

penalty. It requires a \$1,000 minimum investment, and pays interest annually.

The Quarter Back GIC is a new 3-year certificate that offers a premium rate and lets you cash up to one quarter of your investment without penalty at any time.** The minimum investment is \$5,000, and many interest payment options are available.

Both of these innovative GICs are an excellent way to get the security and accessibility you need from an investment. So call us. And discover how flexible we can be.

Canada Trust

Investing can be this comfortable.

*RSP eligible (some features will vary). **Limited to three withdrawals over the three-year term, totaling up to one quarter of the principal investment. Example: If your initial deposit is \$10,000, you can make up to three withdrawals totaling \$2,500. †Rates shown are as at September 29, 1998. Rates may change at any time, without notice.

Giving learning disabled a better chance in job market

By IRENE GENTLE

Special to the Champion

Lately, education and understanding have taken away much of the stigma of living with a learning disability (LD).

What they haven't taken away is the difficulty of finding a good job with one.

That's why Garry Bedford, Fran Dandy and John Lubert of the Trillium School in Milton are hoping to change all that with a series of job training sessions. They're aimed at helping young LD adults who are finding it difficult making the transition from school to the work world.

"I've known a few learning disabled kids in my own community who really had a problem bridging between school and work," explained Mr. Bedford. "It's a shame to have a lot of things in place in schools and colleges and then just nothing."

To fill that void, Mr. Bedford will be donating his time to help learning disabled young adults find their way into the job market through a series of learning sessions stressing everything from resume and letter of application writing, to job search and interview techniques.

Timing important

The course will also focus on when and how to bring up the disability.

"We'll have role playing situations to show how and when to mention it," said Mr. Bedford. "Would I want to put a LD on my resume? Probably not. Would I bring it up in an interview situation? Quite possibly, but here's when and how."

The course is aimed at instilling confidence as well as practical job techniques in LD adults.

"We want to help them learn to communicate how they learn to employers because they tend to learn differently," said Mr. Bedford. "It may take them a little more time but once they learn they are just as good or better than anyone else."

While the idea is still in planning stages, Mr. Bedford hopes to run sessions every Tuesday night in November, amounting to

• see UP on page 10

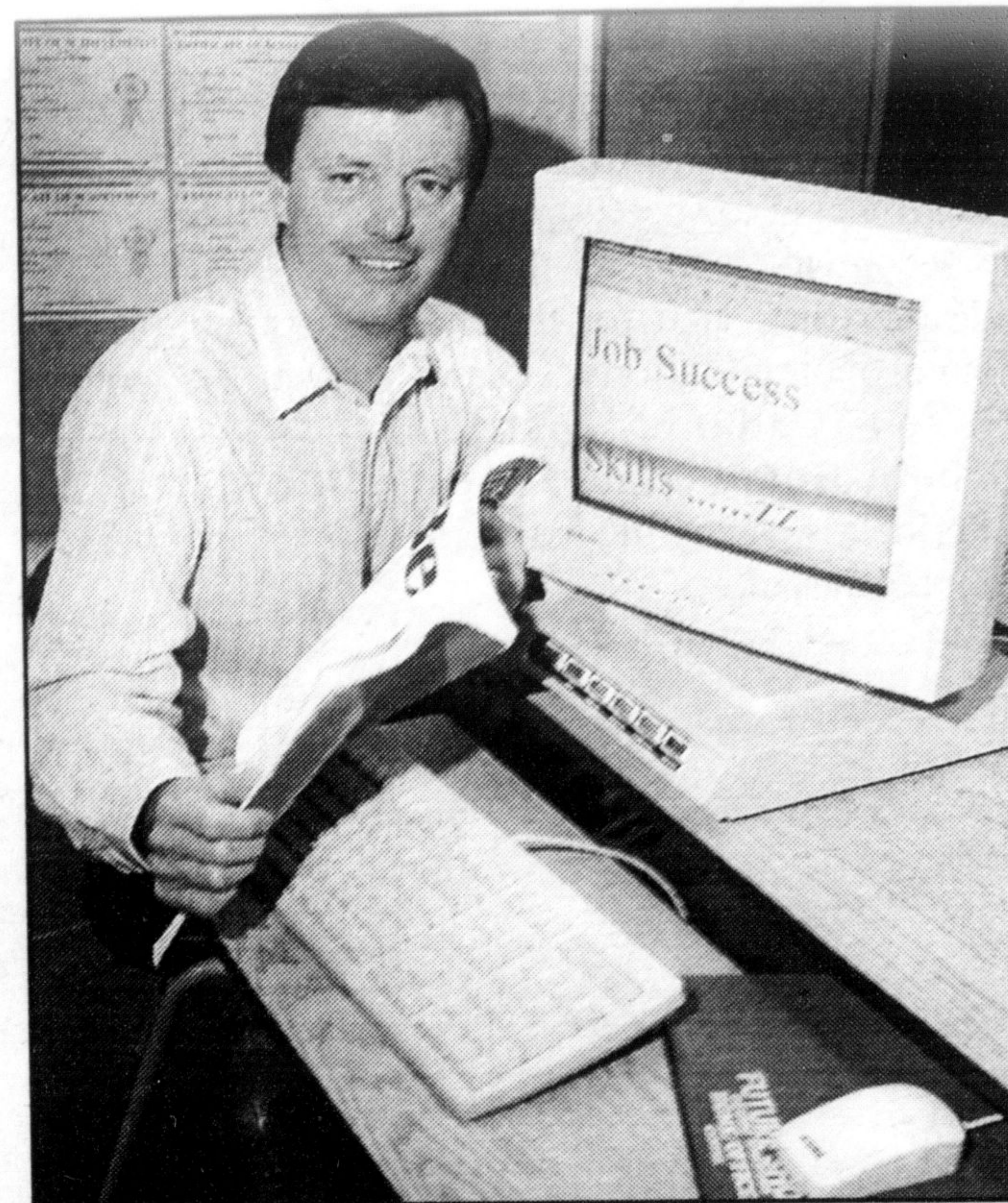


Photo by GRAHAM PAINE

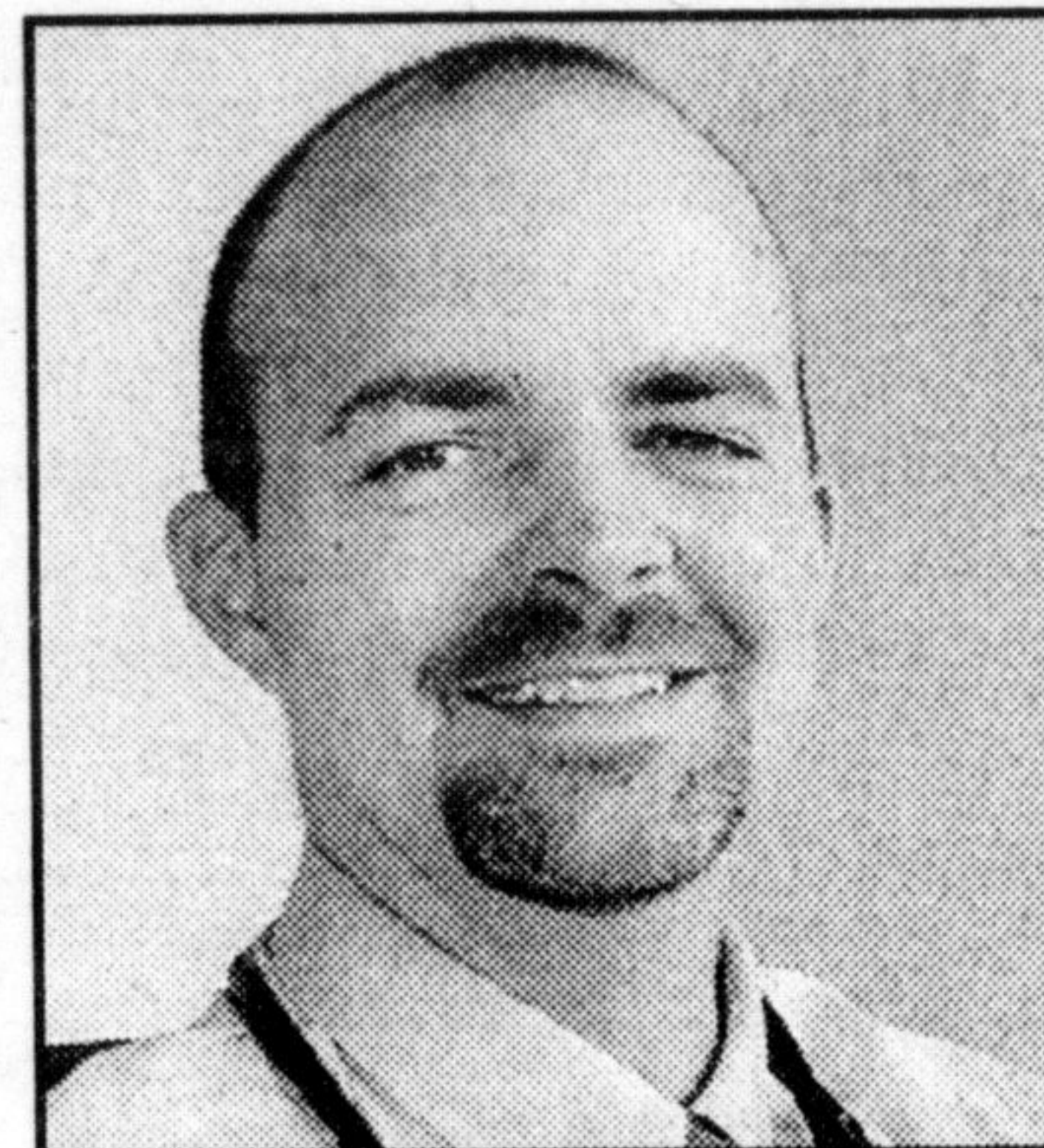
Trillium School instructor Garry Bedford is among those spearheading a problem to help learning disabled students find jobs after graduation.

New family doc may lessen crunch

A new family physician in town may help alleviate the current situation with regard to a lack of Milton doctors accepting new patients.

Dr. Mark Bacon, who came to Milton in July as an associate of Dr. Walter Koslowski, has opened his own practice at 350 Main St. E.

He also serves on the anesthesia staff at Milton District Hospital.



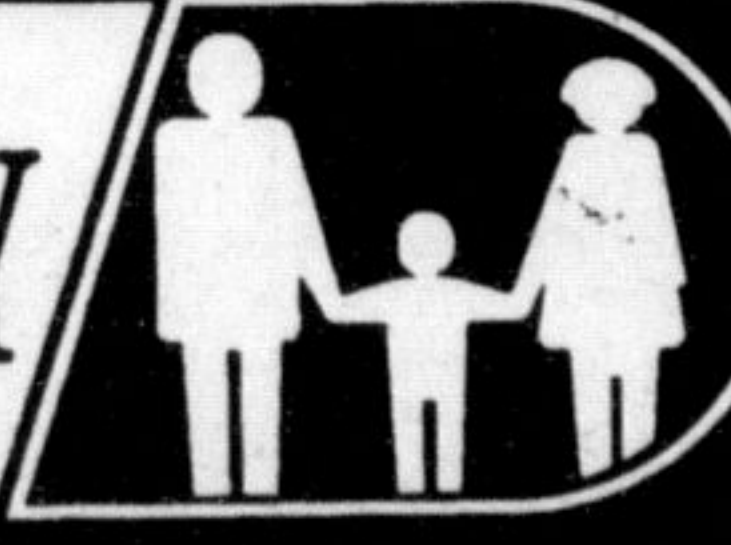
Dr. Mark Bacon

• see GP on page 19

Truly Canadian

Zellers

PHARMACY



at your service... everyday!

DROP BY AND MEET YOUR ZELLER'S PHARMACIST

Bring in this coupon and pick up a business card from your Zeller's pharmacist (keep it as a handy reference)

and you will receive a **BONUS** of 5,000 Club Z Points.

Coupon Expires Oct. 11/98

Available at:



MILTON MALL
55 Ontario St. • 876-0644