

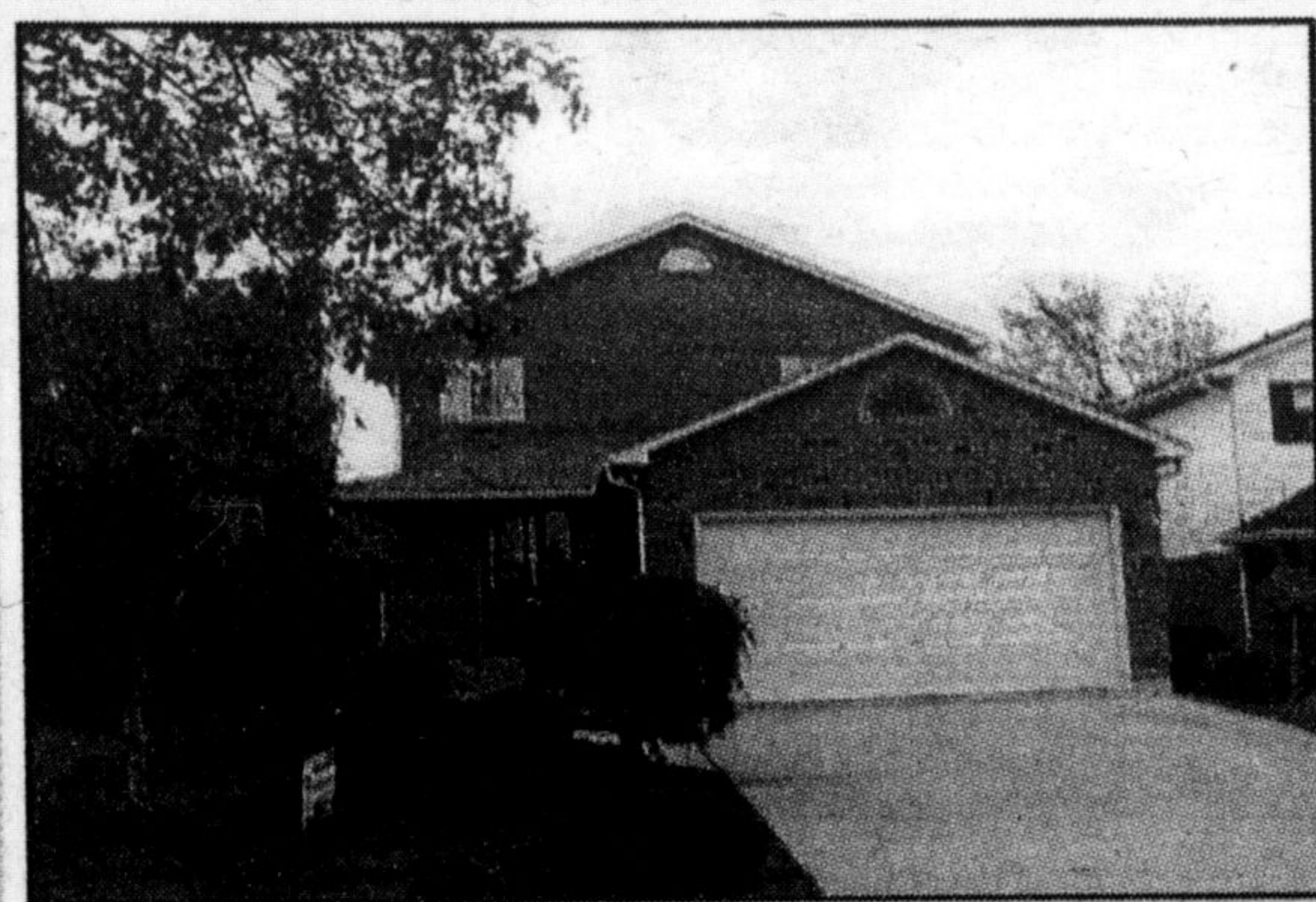
The Canadian Champion

BEST HOMES

MILTON, ONTARIO

878-2341

September 8, 1998



\$214,900 RE/MAX®

YOU WON'T WANT TO LEAVE, once you see inside this superb 3 br home! Upgraded throughout with new windows, central air, main floor family room with gas fireplace, french doors, new broadloom and hardwood floors. For the large family there is 2 1/2 bathrooms, double garage and driveway. Call Clayton to view.

RE/MAX BLUE SPRINGS REALTY (HALTON) CORP.
CLAYTON HACKENBROOK, Sales Rep., 878-7777



\$349,000 ROYAL LEPAGE

SPANISH STYLE BUNGALOW. 8.07 acres. Paved drive to sunny private setting. Lovely Spanish bungalow features living room with windows on 3 sides, stone fireplace in dining room, rear verandah & heated kidney in-ground pool. Natural gas & cable. Pathway thru woods with overhead lighting. It's all here and located just a few minutes to James Snow Parkway & 401.

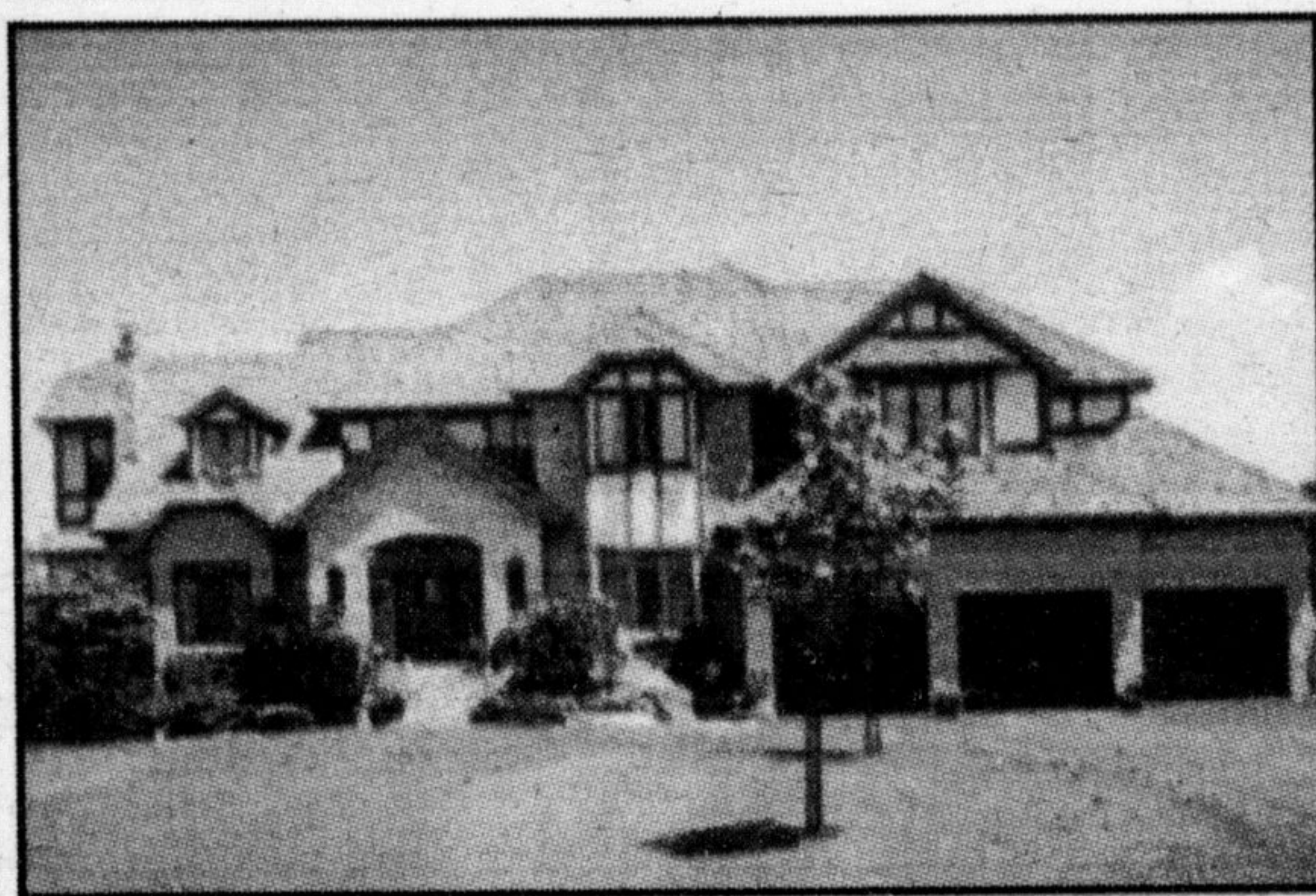
ROYAL LEPAGE REAL ESTATE SERVICES LTD.
VIRGINIA BRAZEAU, Sales Rep. 878-8101



\$299,900 RE/MAX®

COME ONE IN! You will not be disappointed! Fully upgraded raised bungalow in a secluded subdivision of Campbellville. Traditional but relaxed floor plan provide easy living and low maintenance lifestyle. Why settle for less when you can have it all! Just reduced. Call me for your appointment to view!

RE/MAX BLUE SPRINGS REALTY (HALTON) CORP.
FLORENCE WALTER, Sales Rep., 878-7777



\$659,900 ROYAL LEPAGE

IMPRESSIVE COUNTRY ESTATE. This 1990 custom built 4600 sq.ft. home is set on 2 acres in Kilbride. Many outstanding features include magnificent oak staircase, 3 fireplaces, gleaming hardwood floors, wrap around deck and patio and finished lower level with walkout. Shows to perfection with many upgrades!

ROYAL LEPAGE REAL ESTATE SERVICES LTD.
CAROLE D. BUDWORTH, Sales Rep. 878-8101



\$192,900 ROYAL LEPAGE

COURT LOCATION. Four bedroom, 2 storey home on a small court in the Dorset Park area of town. Good size lot with many upgrades including hardwood floors in bedrooms and roof shingled (1997). Excellent opportunity for first time buyers.

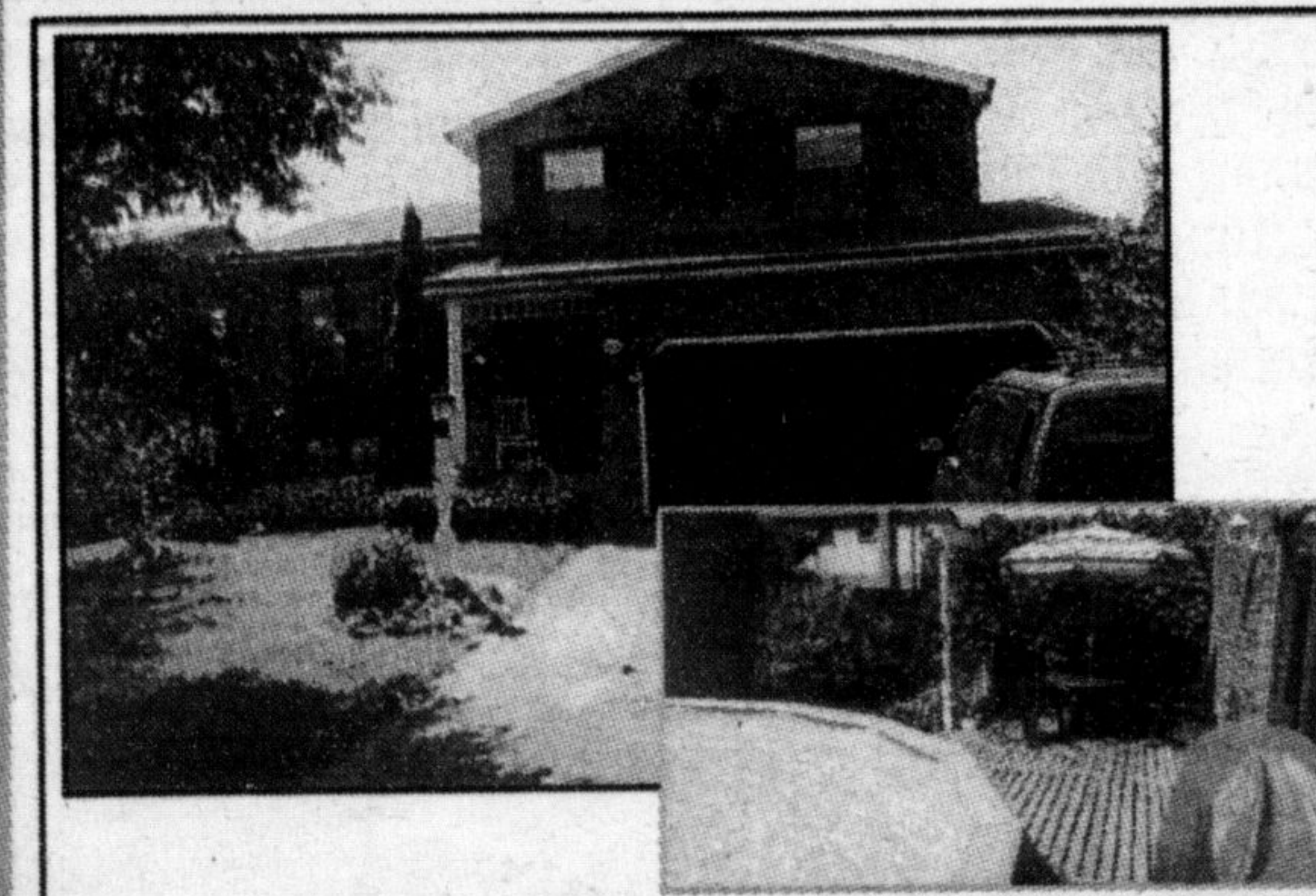
ROYAL LEPAGE REAL ESTATE SERVICES LTD.
DOUG HOWDEN, Associate Broker 878-8101



\$229,000 ROYAL LEPAGE

NEW HOME. Lovely bungalow features open concept design, bright & tastefully decorated with oak kitchen, ceramics, 2 full baths. Joined to 78'x52' garage with breezeway. Hwy commercial zoning on Hwy #24 in Village of Erin. Backs on to bush and stream - not a drive by!

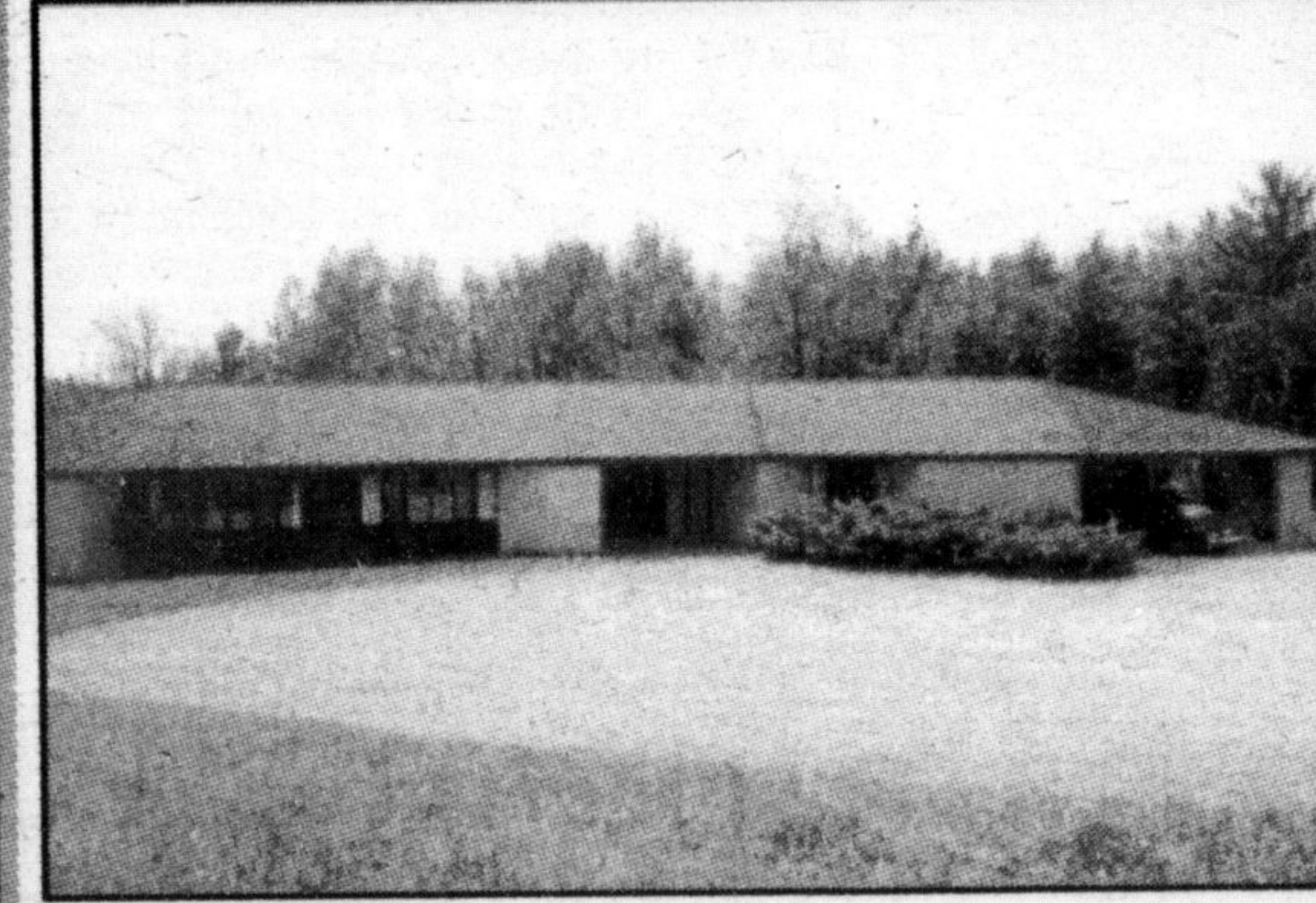
ROYAL LEPAGE REAL ESTATE SERVICES LTD.
VIRGINIA BRAZEAU, Sales Rep. 878-8101



\$255,900 Watson

BRONTE MEADOWS EXECUTIVE! This outstanding executive retreat, lovingly maintained by the original owners boasts not only a premium lot but many fine upgrades and additions. The rear yard has a westerly exposure and features a pool surrounded by custom decking and is adorned by mature landscaping. Call me for your exclusive showing of this fabulous home.

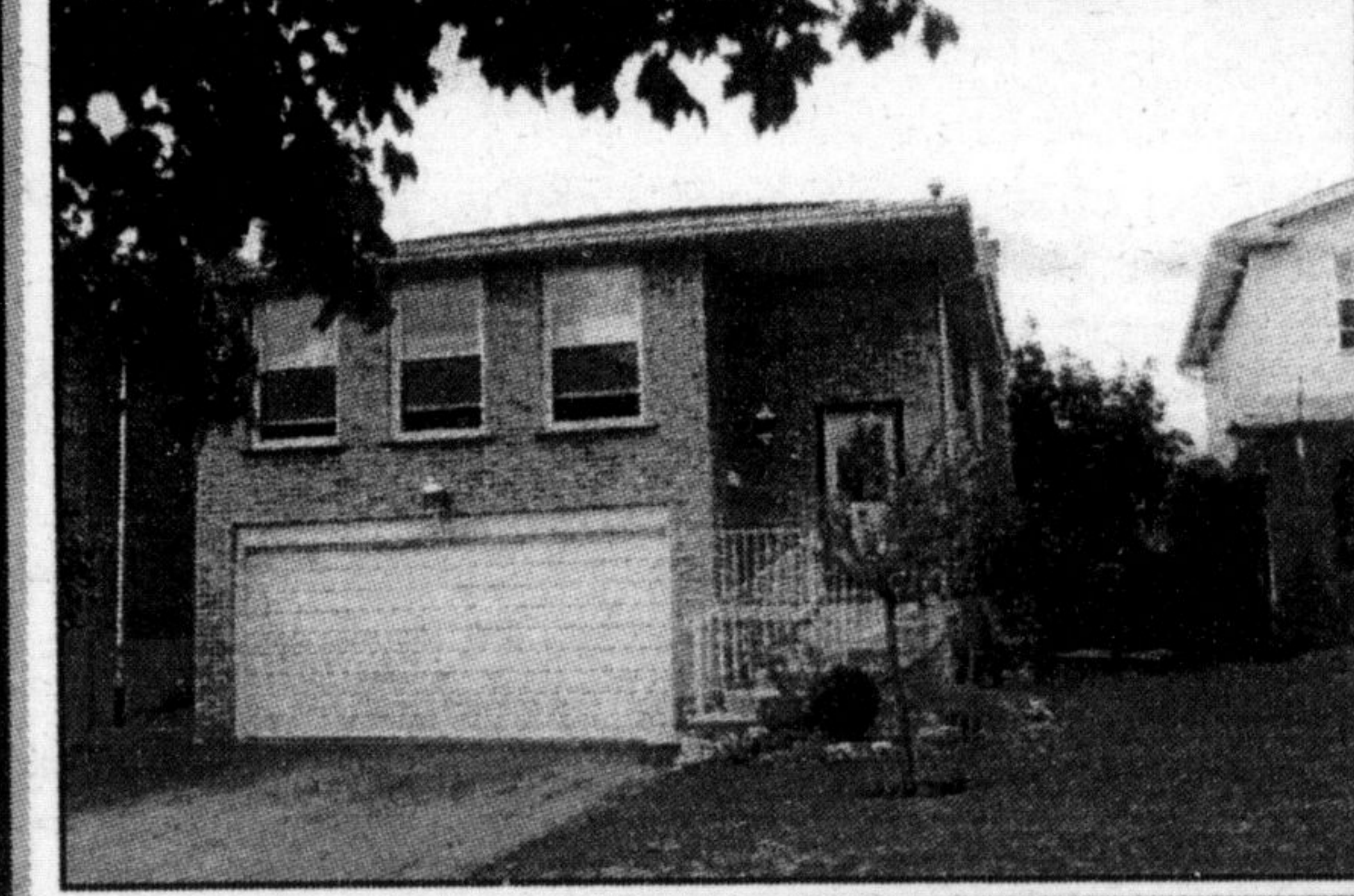
I.S. WATSON REAL ESTATE SERVICES LTD.
IAN WATSON, Broker, Owner 330-9834



\$469,000 ROYAL LEPAGE

33 ACRES! Leads to a secluded peaceful setting for this quality built executive bungalow. 5 bedrooms, 4 bathrooms, 2 fireplaces, slate flooring in large foyer, reshingled roof & window walls to enjoy the view of the woods & fields. Numerous walkouts at ground level. In-law potential!

ROYAL LEPAGE REAL ESTATE SERVICES LTD.
VIRGINIA BRAZEAU, Sales Rep. 878-8101



\$229,900 Better Homes and Gardens

SPACIOUS & GRACIOUS. Contact Bill Currie at 878-4944 to view this well maintained home in Timberlea. Features include 3 bedrooms, 3 washrooms, large eat-in kitchen, combo livingroom & diningroom, family room with fireplace, den, finished rec room, central air and large lot.

MAIN STREET REALTY BETTER HOMES & GARDENS
BILL CURRIE, Sales Rep. 878-4944