



GET MOVING IN '98

RE/MAX Blue Springs Realty (Halton) Corp.

878-7777

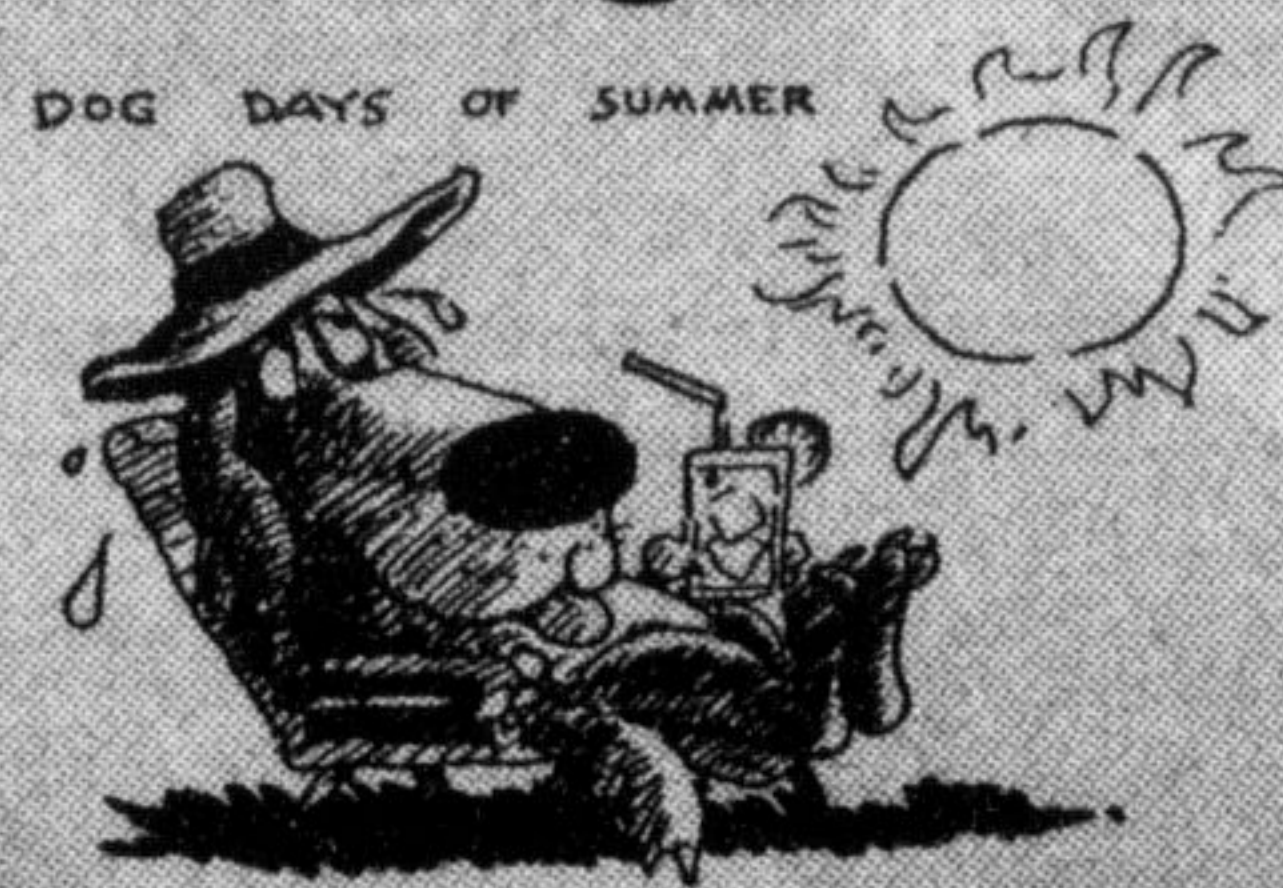


22 ONTARIO ST. S.
INDEPENDENTLY OWNED & OPERATED



JUST RELAX... and leave the selling to us

Glen Thomas
Associate Broker
878-7777

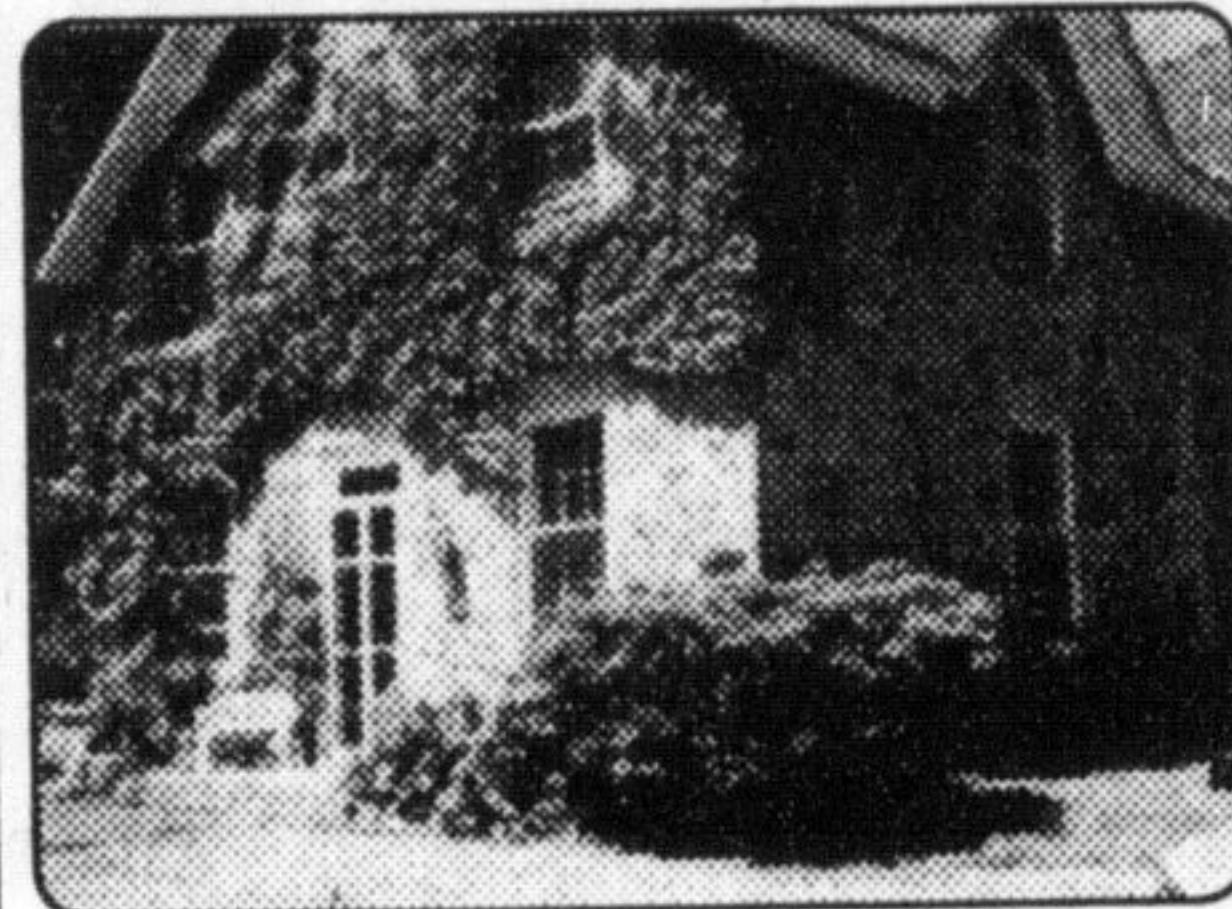


IDEAL OFFICE SPACE



Approx. 3700 sq. ft. of well finished office space. Main St. location. Call for details. Could be split if needed. Asking \$6.00 sq. ft.

GOTHIC STONE



Be one of the lucky few who own a Heritage award winner. 1876 Gothic schoolhouse. Large principal rooms, fully restored on a large village lot. Call for details. \$425,000.



Gary Thomas
Associate Broker
878-7777
Home 875-3700

AL VOLPE 878-7777

Sales Representative



COUNTRY ESTATE \$549,000

Fabulous superior quality custom built country estate approx. 2750 sq. ft. of luxury living. 3

FF 3 bath rm, 6 car gar. 8.5 acres and beautiful view of Escarpment, Toronto and Mount Nemo. All stone built and much more.

House for Rent. Hwy #25 N of 15 sd rd. 3BR, 7 acres, work shop. Mo to Mo lease \$1000 Month.

WELCOME TO 12229 HIGHWAY 25

Bring all offers. 3 BR bungalow north of 401 and 15 Sd. Rd. Home features full basement and partly fin. Furnace, oil tank insulation and deck, done recent. 7 acres of that feature fertile soil woodland at the back and inground pool that needs some repair. Work shop 900 sq. ft. and much more. Offered at \$239,900.



2 Acre building lot mins to Hwy 5 and Burlington. Set high on Mount Nemo. Great view.

UNBELIEVABLE VALUE!!!



Outstanding value on a 4 bedroom home. Well maintained, great curb appeal, cool off in the 16'x32' inground pool. Let me show you this one. \$244,900.

NEW HOME TO BE BUILT



Let a local builder build your dream home. We have a 50' x 145' lot ready for this 2,088 sq. ft. beauty. Features 3 bedrooms, vaulted ceilings, large eat-in kitchen and exceptional design. \$279,000. Call for details.

A REAL SLEEPER



4 bedroom cape cod style home on large 60' x 120' lot on a great street in older Milton. Call for appointment. \$179,900

PALOMINO Ranch



Beautiful new subdivision just west of Milton. Lots of new homes under way at Palomino Ranch. Choose bungalows and 2 storeys on roomy 1/2 acre to 1 acre lots. From \$329,000. Call for details.

INTERVIEW ONE OF US BEFORE YOU LIST YOUR HOME! CALL FOR EVALUATION TODAY!



MIKE MORGAN
Associate Broker

Office: 878-7777
Res.: 878-8093



Over 3 acres of natural treed setting nestled into the Niagara Escarpment. Picturesque building lot located just north of town. Carve your perfect homesite into the unique natural landscape. Call Mike \$99,900.



Classic 1850 built two storey, five bedroom home preserved to reflect the era with a Nanny's quarters addition (1989) to total approx. 5,000 sq. ft. The centre hall plan, the high ceilings, wood floors and extensive trim reveal the grace of yesteryear. Located on 1.4 scenic acres between Milton and Oakville.

To view call Mike \$393,900



IT'S ALL HERE. Freshly painted, this sparkling home offers a popular layout with eat-in kitchen with walkout to fenced yard, separate dining room, bright spacious living room and a finished rec. rm. New furnace (97), central air conditioning, new windows and front door. Can accommodate a quick closing., call Mike \$129,900.



QUIET DESIRED AVENUE LOCATION is the perfect setting for this extensively upgraded home. Recent upgrades of oak railing, renovated ensuite, gas fireplace, re-shingled roof, hi-efficiency furnace, air conditioning and much much more. Walkout from the family room to the deck takes full advantage of the extra wide treed lot. Call Mike. \$239,900. Now \$234,900.



STEWART HADDON
Associate Broker
RE/MAX MILTOWNE

OFFICE (905) 878-7777
RES. (905) 878-3333

EXPERIENCE

JUST LISTED



ASKING ONLY \$256,900
For this 5 level side split, possible in-law suite, main floor family room w/a fireplace, large eat in kitchen overlooking the family room, main bedroom w/ensuite and deck. To view or for more information, please ask for Stewart HADDON, Assoc. Broker. Res. 878-3333

DORSET PARK



Lots of space inside this 4 level side split, family room w/fireplace, 4th bedroom in the basement just off the rec./room. **ASKING \$227,000 FOR THIS ROOMY HOME.** To view or for more information, please Ask for Stewart HADDON, Assoc. Broker. 878-3333.

THERE IS NO SUBSTITUTE FOR IT.
PROFESSIONAL REAL ESTATE SERVICE SINCE 1977



KATRINA WALTON
SALES REPRESENTATIVE
Office: 878-7777

GREAT VALUE!



Well maintained 4 bedroom brick home with 16' x 32' inground pool, c. air, c. vac., rec. room with wet bar, games room, 3 baths, large lr/dt. combo. This Timberlea home is situated on a beautifully landscaped lot. Don't miss this one. Offered at \$244,900.

OVERLOOKING THE ESCARPMENT



WITH 16 MILE CREEK running through the property, this 47 acre site is a nature lover's delight. Located close to town, a brick 3-bedroom bungalow, 2-storey barn and 2-car garage complete the setting. Call to view. Offered at \$750,000.00.

ELMWOOD!



CUTE ONE AND A HALF STOREY home on 60'x120' lot. Close to downtown, schools and shopping, this 3+ bedroom beauty has new shingles, upgraded broadloom and is located in a very desirable area of town. Won't last long. Offered at \$179,900.

IF YOU LIKE ACREAGE — READ ON!!



165 ACRES with 3 road frontages, this property is located just north of Moffat. The house (circa 1910) features 6 bedrooms, country kitchen and separate L.R./D.R. A 3-car garage, driveway, barn and a 2 bedroom cottage complete the package. Offered at \$519,900.00.

BEST HOMES

Your Milton Real Estate Marketplace To Advertise, call Kathy McLean at 878-2341