

The mark of a great agent.

ROYAL LEPAGE
878-8101

www.royallepage.ca



PETRA SCHWABE BA
Sales Representative
878-8101

EXQUISITE SETTING



Beautifully maintained 4 bdrm. executive home nicely situated on parklike grounds; 14+ acres, 2 large ponds, fabulous perennial gardens. A must to see! \$459,000.

15 ACRES \$349,000



NEW LISTING! Spacious, upgraded country home on 15 scenic acres, rolling land (mostly fenced) & pond. Excellent barn/workshop (approx. 56'x32'). Make your move to the country now.



DEBRA TURK
Sales Representative
878-8101

CHARACTER HOME



Make this fabulous vintage home yours. Sep. heated workshop, ample parking could be ideal for home/business set up. Was \$369,900. **NOW \$359,900.**

VILLAGE OF MOFFAT



Custom bungalow to be built on 1+ acre lot minutes to 401. L.R. with high ceilings, sep. d.r., open kitchen/F.R. with fireplace, 3 bdrms., lot & house \$299,900.



BARBARA A. CROWE
Associate Broker
Market Value Appraiser
878-8101
"EVER TO BE THE BEST"

ATTENTION ALL TRUCKERS



Charming bungalow on half an acre lot (approx. 110 x 201) with numerous upgrades as well as a detached garage and lots of space to park a truck. Close to Milton and Hwy. 401. For further info. please call

BARBARA A. CROWE, MVA
"Ever to be the best"
Associate Broker



BARB LAFLECHE
Sales Representative
878-8101

CLASSIC 2 STOREY — \$699,000



Beautifully upgraded Robinson built home set on a 2 acre lot in an executive enclave in Kilbride. This home offers all amenities in a country setting incl. gas heat and over 4,000 sq. ft. of gracious living. A summer of great entertaining around the heated pool, cabana and decks await you & your family.



JUST SOLD
Florida bungalow
on Chelsea Rd.



DOUG HOWDEN
Associate Broker
878-8101

MODEL HOME



3 bdrm. Cape Cod style home. Approx. 2250 sq. ft. Main floor F.R. with gas F.P. and den. Second floor large master with beautiful ensuite. Laundry second floor. Located in a 14 lot rural subdivision with other homes available. \$329,000.



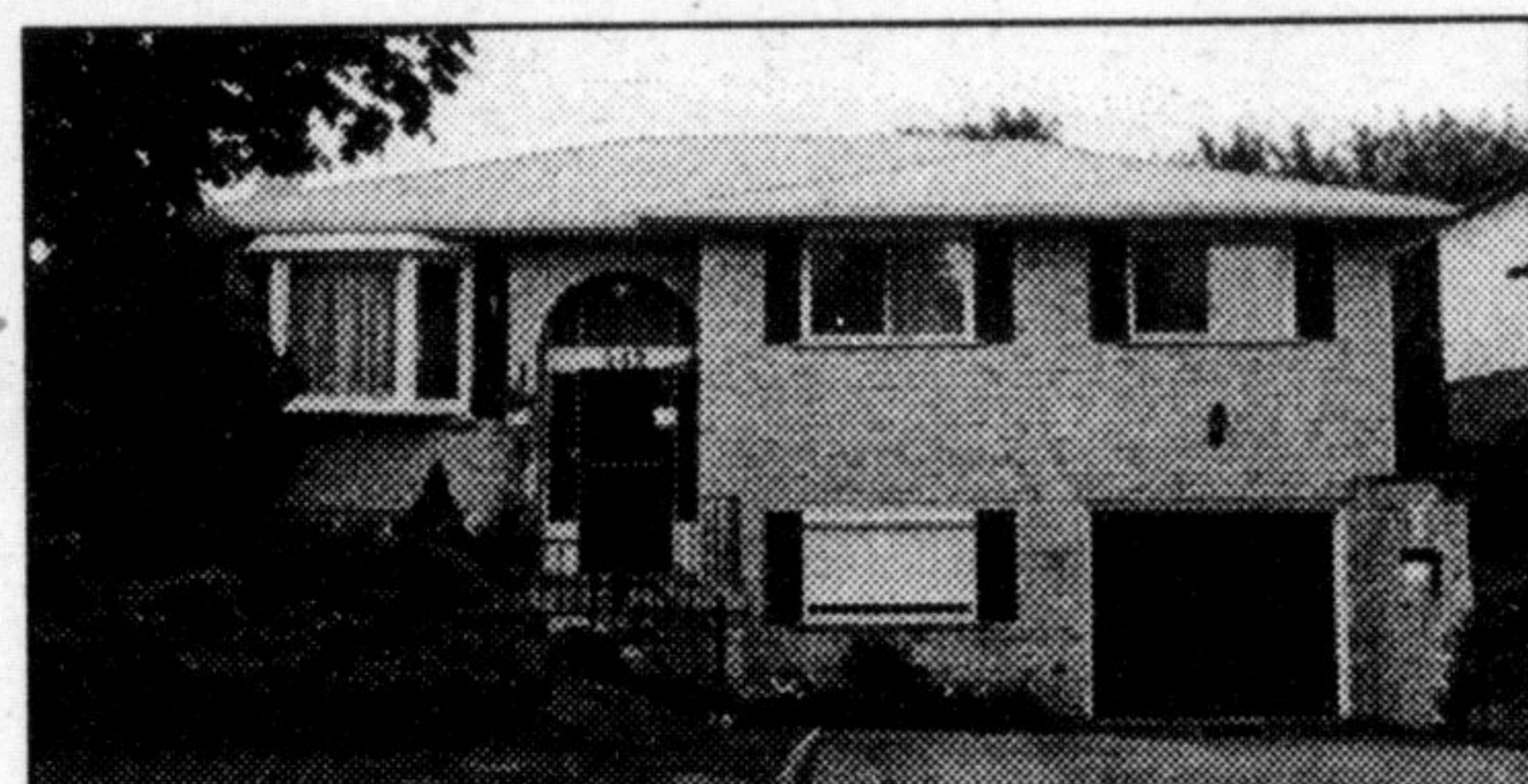
COUNTRY AT ITS BEST

40+ acre horse farm. Large renovated century farmhouse. Inground pool with walkouts from L.R. and F.R. 30'x70' barn & 30'x80' driveway plus an outdoor sand ring & pond. 4 fenced paddocks & 2 fenced pastures. Well set back from road. One of a kind. \$549,000.



SANDY DEL PAPA
Sales Rep
878-8101

NEW LISTING! "BUNGALOW"



Located on a quiet crescent in Timberlea, this 3 + 1 bedroom bungalow features double deep garage (holds 2 cars) and has separate entrance to lower level (ideal for in-law accommodation). Spectacular yard with generous deck overlooking inground kidney shaped pool. Numerous upgrades! Shows well! Call Sandy for more information.



CAROLE D. BUDWORTH
Sales Representative
878-8101



This 1990 custom built country estate offers the finest details for even the most discerning buyer. Beautiful oak staircase, 3 fireplaces, hardwood floors, bleached oak cupboards, walkouts from 3 levels. Shows to perfection with many upgrades.



This stunning 3 storey lakefront home is the ultimate in custom quality & luxury. Finished lower level with walkout to waterfalls and I/G pool. Suitable for only the most discerning buyer who wants the best of everything overlooking the lake.

Some of Carole's listings recently sold. Why not call a top sales representative with a proven track record.

473 Bell	618 Joyce	341 #35 Wilson	18 Laurier	751 Frobisher	82 Prince
831 Cedarbrae	893 Maple	318 #55 Laurier	836 Maple	739 Coulson	896 Hemlock
661 #6 Childs	329 Mountainview	332 Woodward			



PHIL PRESTIDGE
SALES REP
878-8101



PRIVACY & IN TOWN CONVENIENCE

One acre of privacy. 3,500 sq.ft. large principal rooms, main floor family room, dining room and laundry. Lots of bathrooms, 3 fireplaces, dual heating and cooling, separate 2 bedroom apartment, possible industrial uses with residential. Excellent price \$329,900.



NEW PRICE
3 bedrooms, large master, fenced yard, finished basement, central air, shows great. \$175,900.

FOR SALE/LEASE
Industrial
Condos - 3 units. Up to 5,750 sq.ft. \$55 per sq.ft.



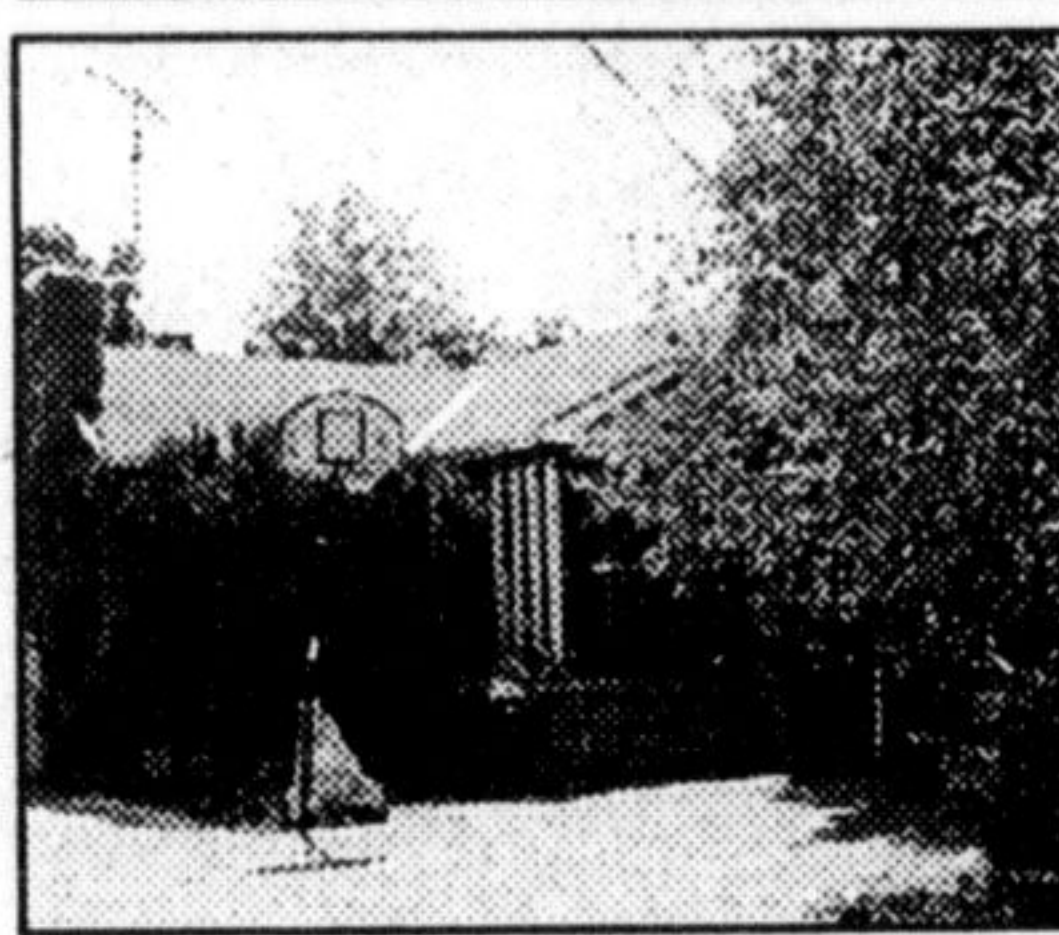
SANDI KINSALE
Sales Representative
878-8101

HOT OFF THE PRESS!
\$164,900



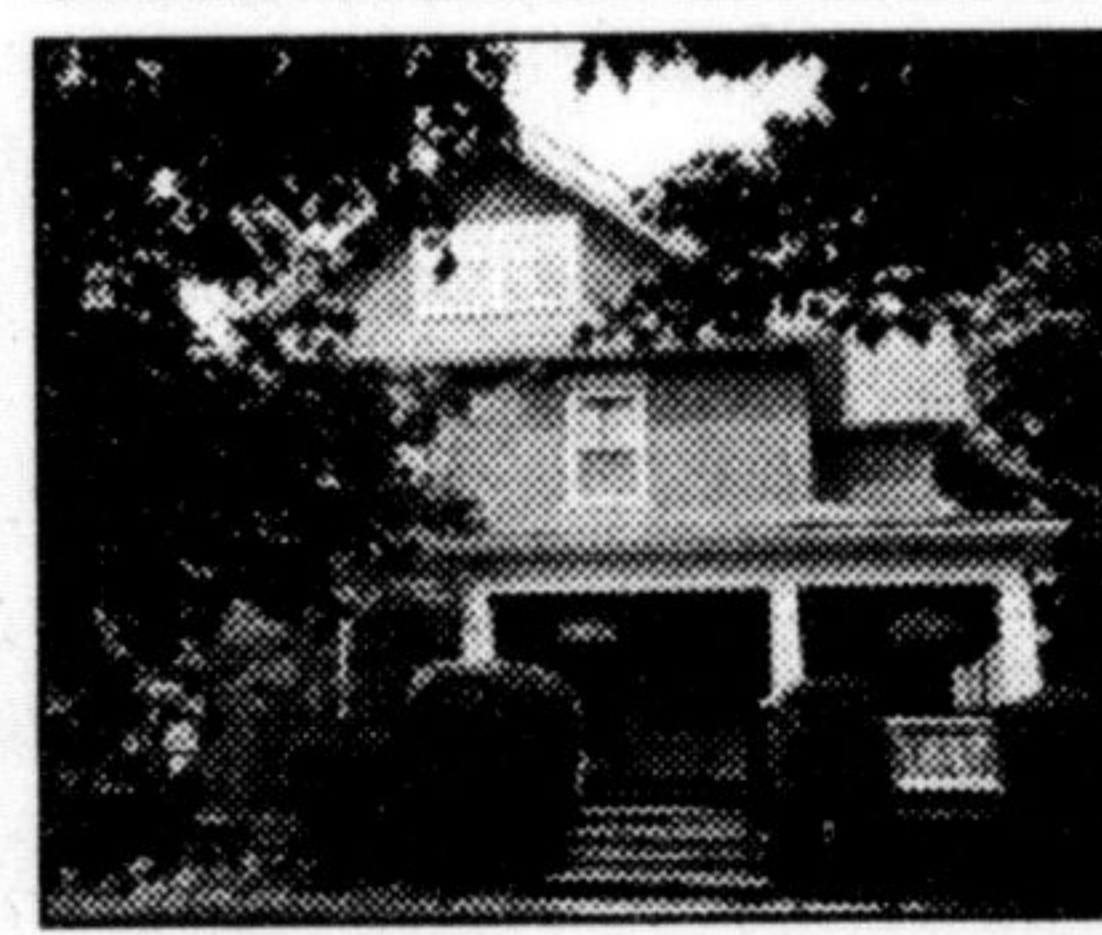
This brand new listing in Village Parc has been extensively upgraded with top quality broadloom, extra cupboards in kitchen and ensuite storage area, and features two full bdrms. & bath. Unit comes with 2 parking spaces & 2 lockers. Call now for an appointment to see this outstanding home.

IDEAL FOR COMMUTERS
\$172,900



This 3 bedroom home is located just minutes from the 401 access, and features hardwood flooring, log-burning fireplace, updated kitchen and large private yard. Please call for more information.

OPEN HOUSE AUG. 16 1-4 PM
\$445,000



This stunning circa 1921 home is located close to schools, shopping and medical facilities, and lends itself to many uses. Ideal for the family in need of Nanny's quarters, or highly suitable for in-law accommodation. This home has been beautifully maintained to today's standards, yet with all the charm and space of yesterday.

TUCKED AWAY
\$169,900

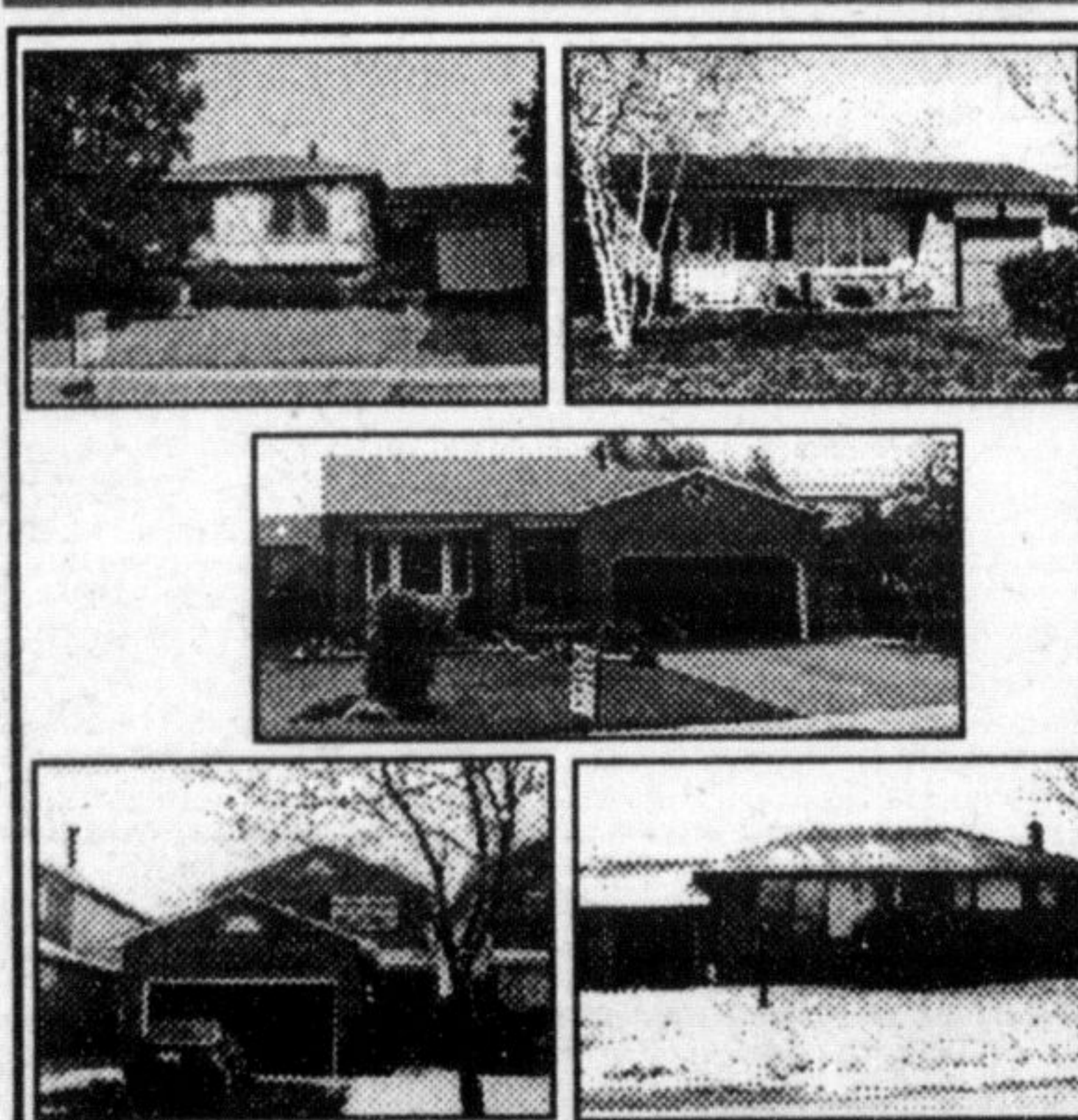


Located on one of Milton's quietest streets, this charming home features separate dining room, large eat-in kitchen, main floor den, private fenced yard, plus some new windows. This home has been very well maintained, and displays pride of ownership.



Joyce Hagevik
A signature you can count on
Sales Representative

THESE VENDORS WERE SOLD... ON JOYCE

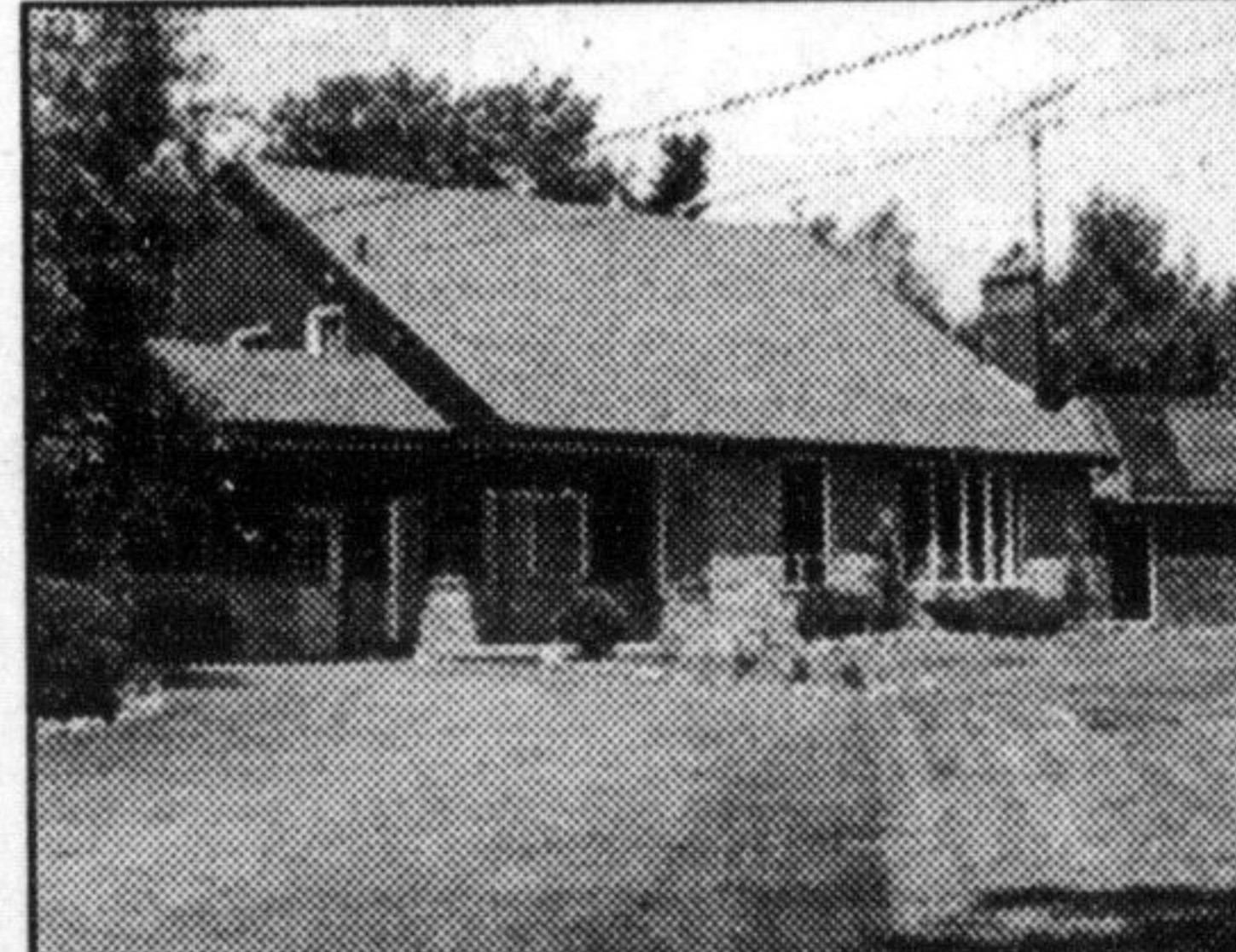


WHERE NATURE RUNS FREE!
\$334,900.



This raised contemporary offers huge bright rooms plus a full walkout basement, lots of privacy, plus only minutes to the 401.

A REAL FAMILY RETREAT
\$465,000.



A priceless setting & location that could be yours soon. Words just can't describe how truly wonderful this property is. Call to view, you'll be impressed.



HEATHER ASHBEE-MEEHAN
Sales Representative
878-8101

THEY ARE SELLING AS FAST AS THEY'RE LISTING, I NEED YOUR HOME TO SELL NEXT!

JUST SOLD THRU MLS



866 ANDERSON AVE.

EXCLUSIVE! LISTING



RANDALL EXECUTIVE JUST SOLD THRU MLS



720 ROSEHEATH