

PICTURE GALLERY

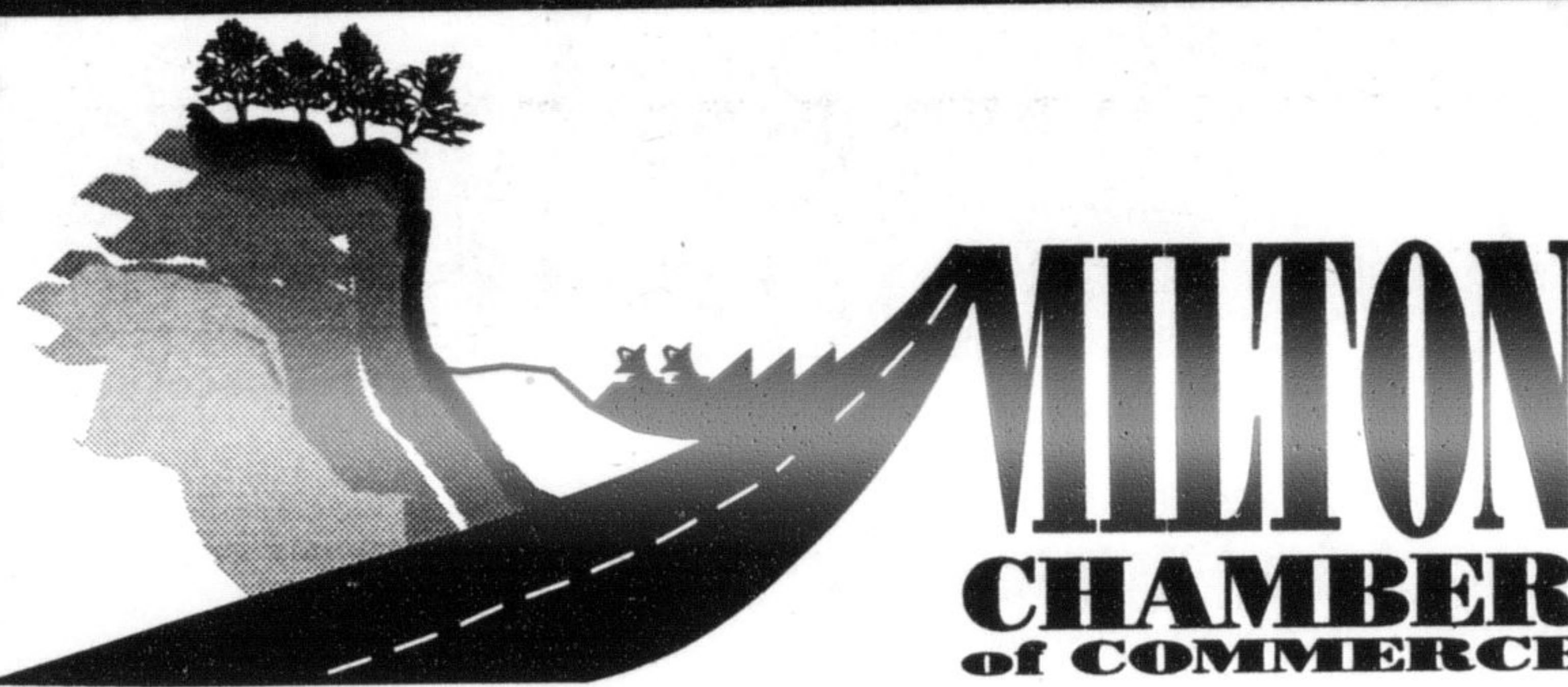


- Authorized Service Depot
- Full Training Contracts
- Software & Accessories
- Network Installing
- Sales & Service
- On Site Service

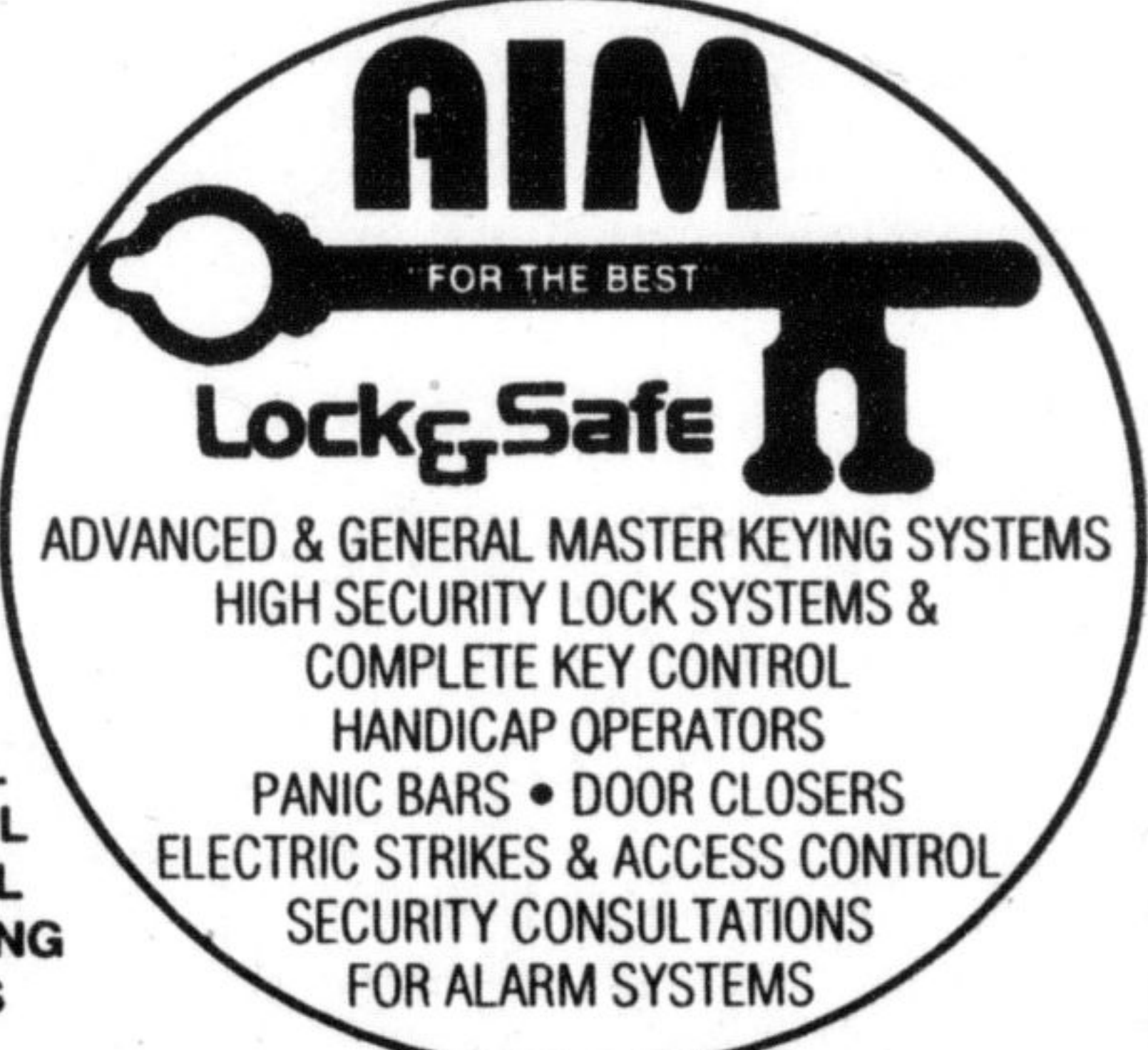


Acer **Lotus**
Canon **Epson**
Lexmark **Microsoft**

751 Main Street East, Suite 2, Milton
Phone 878-4651 Fax 876-1013 • 1-800-268-0034
Monday - Friday 9-5:30 pm Saturday 10 - 4 pm



Logo designed by Shoot Photographic



- INDUSTRIAL
- COMMERCIAL
- RESIDENTIAL
- MASTER KEYING
- LOCK-OUTS
- SAFES

ADVANCED & GENERAL MASTER KEYING SYSTEMS
HIGH SECURITY LOCK SYSTEMS &
COMPLETE KEY CONTROL
HANDICAP OPERATORS
PANIC BARS • DOOR CLOSERS
ELECTRIC STRIKES & ACCESS CONTROL
SECURITY CONSULTATIONS
FOR ALARM SYSTEMS

MOBILE SERVICE
878-5080

CO-STEEL RECYCLING

WE BUY ALL METALS

STEEL Siding, Cast, Used Equipment, Angle, Structural Shapes, Rebar, Stamping, Beams, etc.

NON-FERROUS Copper, Aluminum, Brass, Taps, Electrical Wire, Cast Aluminum, Doors, Lead, Aluminum Siding, etc.

CO-STEEL RECYCLING

~ Milton Division ~
1 km. north of the 401 on Hwy. 25
(905) 875-4800

Industrial, commercial, residential and agricultural inquiries welcome.



MERITOR

A Heritage of Rockwell Technology

Formerly Rockwell International
Suspension System Company

150 Steeles Avenue, Milton, Ontario L9T 2Y5

GRINNING GECKO DESIGN



Advertising Design
Logos & Posters
Packaging Design
Brochures & Catalogues
Desktop Publishing
...and more!

NATALIE ROWE (905) 854-1655
R.R.#1, MOFFAT, ONTARIO L0P 1J0

Superior Propane Inc.

(519) 822-7780

SERVICE - SAVINGS - SELECTION

SUNNY OASIS

INTERNET SERVICES

- Business Web Site Development and hosting
- Free Software for Business & Residential
- 24 hour, 7 day/week support
- E-Mail
- Free Consultation

ARE YOU READY FOR THE INTERNET?

\$19.95 Unlimited Usage

905-876-1943 1-800-763-3575

Please visit our web site at: www.sunnyoasis.com



EXECUTIVE DIRECTOR'S REPORT

Meetings! Meetings! & More Meetings!

Secondary Plans

Over the summer months I have been part of several Secondary Planning Committees to determine the look and feel of our new larger Milton. The Town of Milton committees are the CBD (Central Business District) Secondary Plan led by the Dillon Group and the Phase I - Urban Expansion Area Secondary Plan/Subwatershed Study/James Snow EA led by Macaulay Shiomi Howson.

Both committees are made up of Town staff, the consultant team and stakeholder representatives from the Chamber, BIA, Region, HRCA and Police. We have been on walking tours of the CBD to visualize how our downtown and Main Street area will look in the future and bus tours of the Phase I expansion area as well as new communities in Oakville & Burlington to allow us to get a feel for what the development industry is building. Workshops have been ongoing since June to get ideas and viewpoints from the community. Watch the Champion for announcements of fur-

ther opportunities to participate.

If you have any ideas please contact me and I will share your thoughts with the committee.

Escarpment Country

The Chamber of Commerce and Escarpment Country Tourism Partners are eagerly awaiting the installation of two billboard signs depicting the trademarked Escarpment Country design on highway 401 at Trafalgar Rd and Guelph Line. Escarpment Country is the name selected by our groups to define Milton and Campbellville for purposes of marketing our tourism attractions to the rest of Ontario and Canada.

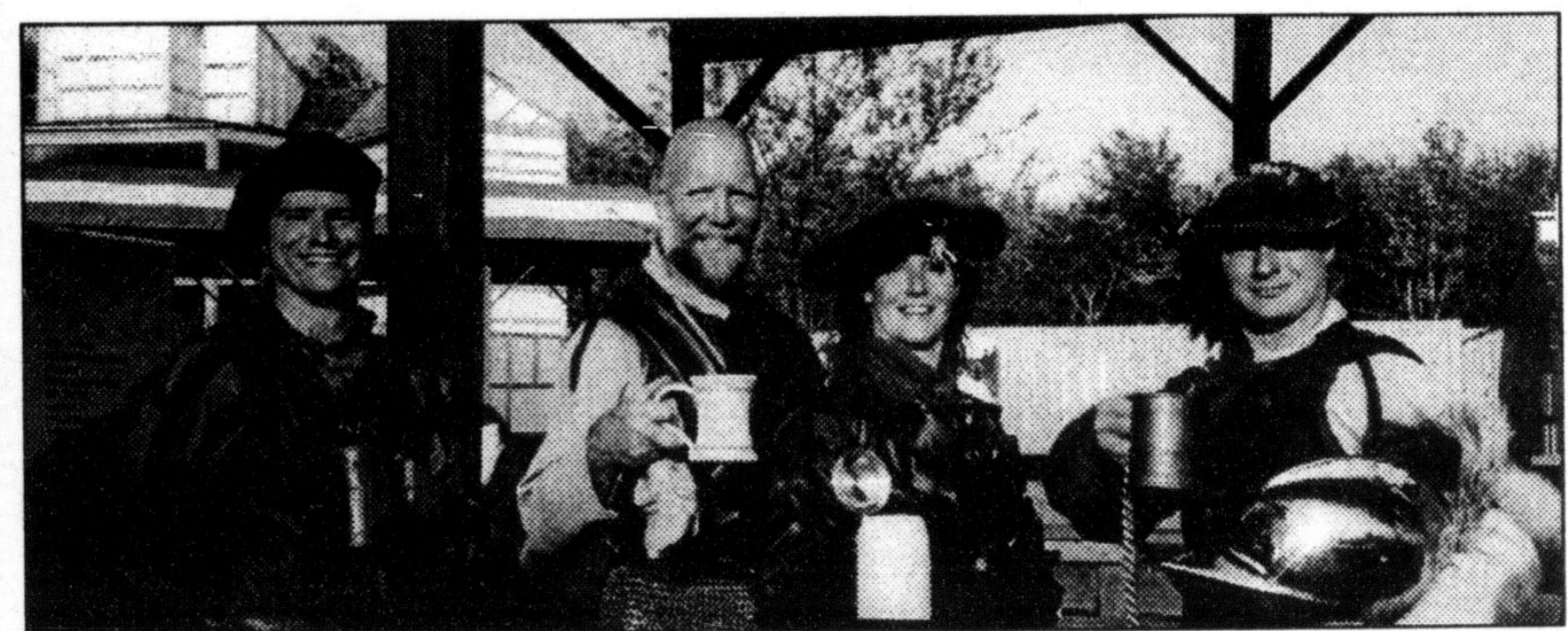
The Niagara Escarpment runs through our community and is cut by the 401 which offered us an unique opportunity to capitalize on our natural setting. Once the signs have been installed a special grand launch will take place at the Milton Farmers' Market. If you operate a tourism business and want to learn more about our committee please call Sandy at 878-0581.

We are doing all kinds of things at the Chamber these days ... too numerous to list here but do drop in and have a cup of coffee!

MEMBERSHIP RENEWALS

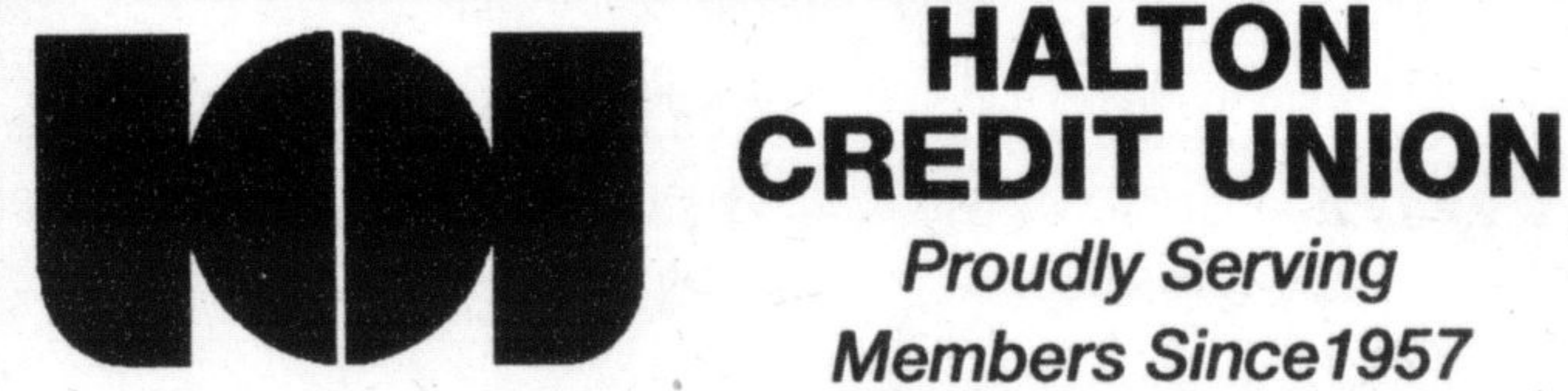
Thank you to the members who renewed their membership in July.

- | | | | |
|--------------------------------|---------------------------------|--|---------------------------------|
| Aim Lock & Safe Ltd. | F.L. Signs | Kwik Kopy Printing | Osborne Group |
| All Fired Up! | Gentle Mist Carpet Cleaners | Louis Nadalin Investments Inc. | Postal Zone |
| Altec Industries | Granite Ridge Golf Club | Maitland Spencer Engineering Ltd. | Primus Printing & Promotions |
| Andrutech Consultants Inc. | Gus Mowbray Ltd. | Millpond Realty Inc. | Quality Hotels & Suites |
| Billis Doors & Windows | Halton Hills Place Banquet Hall | Miltowne Collision | Winklewood Lane Bed & Breakfast |
| Co-Steel Recycling | Intertec Instrumentation Ltd. | Ontario Steam & Antique Preservers Association | Young Drivers Collisionfree |
| Creative Accounting | Kalena Flowers | | |
| Electrolysis College of Canada | | | |



BUSINESS AFTER HOURS on July 25 was held at the Ontario Renaissance Festival. Pictured here are some of the cast members who entertained the guests.

Photo courtesy of Donna Coulter.



HALTON CREDIT UNION

Proudly Serving Members Since 1957

EARL DOLMAGE

Branch Manager
44 Main Street East
Milton, Ontario
(905) 878-4168

COMING EVENTS

Tuesday August 11, 1998
MAYOR'S BREAKFAST
Muddy Duck Restaurant
360 Steeles Avenue
AT LONG
LAST.....GROWTH!!!
Members \$15 Non-Members \$18 + GST. Call the Chamber for your reservation at 878-0581.

Tuesday August 25, 1998
BUSINESS AFTER HOURS
Harrop Restaurant
Join us for fun, food and networking!
345 Steeles Avenue
5 - 7 p.m.