

THE BIGGEST EVENT  
OF THE YEAR

# CANADA-WIDE CLEARANCE

# 1.9%

FINANCING  
UP TO 48 MONTHS

PONTIAC  BUILT FOR DRIVERS™



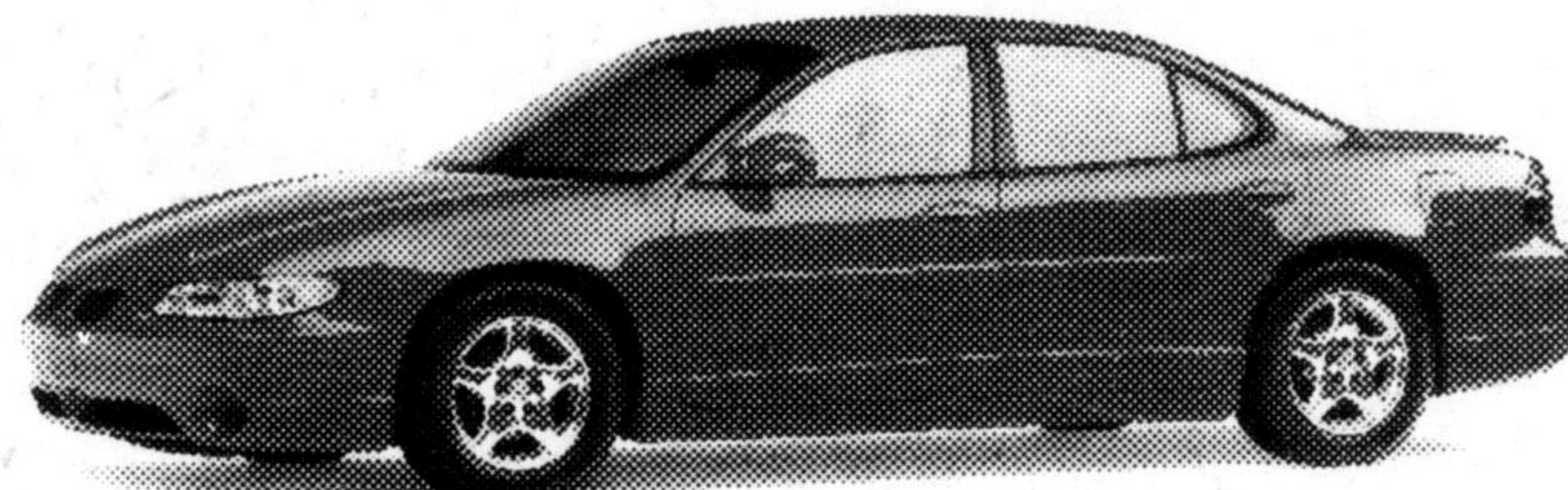
## PONTIAC SUNFIRE COUPE

**SMARTLEASE**  
**\$198** /36 months/  
\$1,400 down  
payment/\$645  
freight required  
**NO SECURITY DEPOSIT**

THIS FUN-TO-DRIVE COUPE IS BUILT FOR DRIVERS. INCLUDED IN THIS SPORTY PACKAGE ARE...

2.2 litre engine, 5-speed manual transmission, 4-wheel ABS, PASSLock™ theft-deterrent system, Next Generation dual front air bags, tinted glass, rear spoiler. **Get into a Sunfire Sedan with rear door child security locks for the same price.**

**PURCHASE**  
**\$15,698**  
(excludes freight \$645)



## PONTIAC GRAND PRIX GT

**SMARTLEASE**  
**\$288** /36 months/  
\$3,000 down  
payment/\$810  
freight required  
**NO SECURITY DEPOSIT**

FROM ITS AERODYNAMIC STYLING TO ITS WIDETRACK STANCE, THIS VEHICLE IS ALL ABOUT PERFORMANCE. IT COMES WITH...

An award-winning 195 HP 3800 Series II V6 engine, 4-speed automatic transmission with Enhanced Traction System, WideTrack stance, Next Generation dual front air bags, 4-wheel ABS, AM/FM stereo with CD player, air conditioning, 6-way power driver's seat, power door locks/windows, tilt/cruise, rear spoiler.

**PURCHASE**  
**\$26,598**  
(excludes freight \$810)

GMC  365 DAYS A YEAR



## GMC SIERRA REGULAR CAB 2WD


**SMARTLEASE**  
**\$188** /24 months/  
\$2,480 down  
payment/\$920  
freight required  
**NO SECURITY DEPOSIT**

SIERRA IS DESIGNED AND BUILT TO BE THE MOST CAPABLE PICKUP YOU'VE EVER DRIVEN. SO IT COMES WITH...

200 HP Vortec V6 engine, automatic transmission, chrome wheels, a 2,018 lb. payload capacity, Next Generation dual front air bags.

Sierra's strength and styling is also available in an Extended Cab with V8 engine, deep tinted glass, tilt and cruise for only \$20 more a month (\$208/month/24 months).

**PURCHASE**  
**\$20,398**  
(excludes freight \$920)

GMC  365 DAYS A YEAR



## GMC SAFARI

**SMARTLEASE**  
**\$258** /24 months/  
\$3,300 down  
payment/\$870  
freight required  
**NO SECURITY DEPOSIT**

THERE'S PLENTY OF ROOM FOR THE FAMILY EVEN THOUGH WE'VE PACKED THE SAFARI WITH ITS BEST LEASE RATE OF THE YEAR. IT'S ALSO LOADED WITH...

190 HP Vortec V6 engine, 4-speed automatic transmission, 4-wheel ABS, air conditioning, 8-passenger seating, deep tinted glass, AM/FM stereo cassette, power door locks.



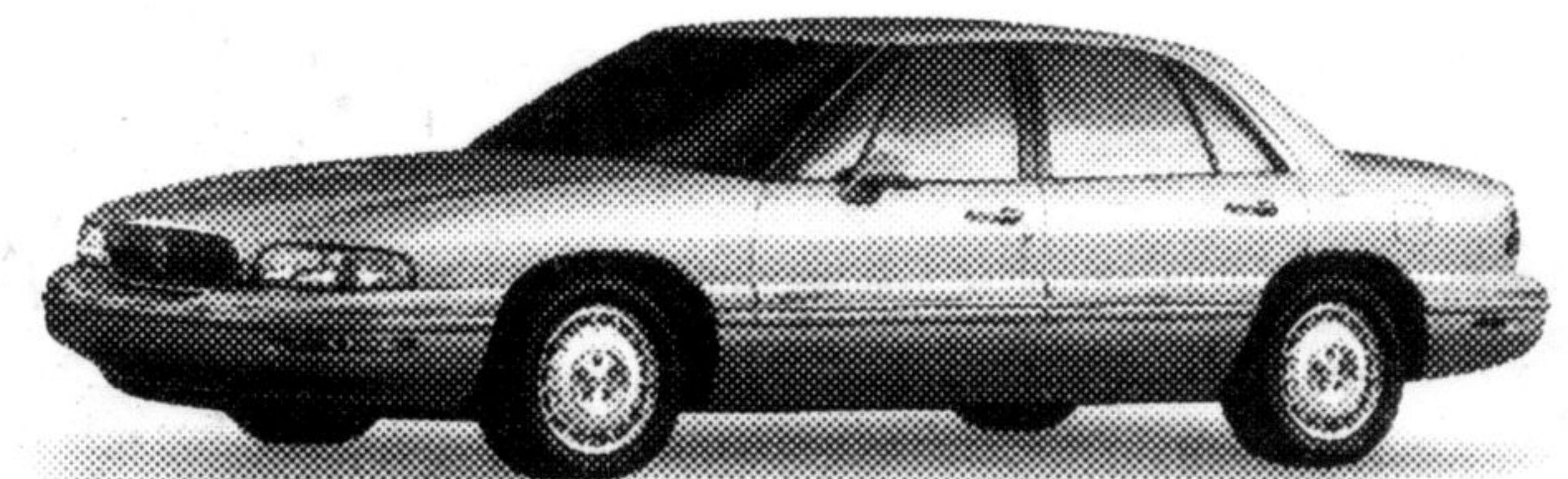
## CENTURY BY BUICK

**SMARTLEASE**  
**\$288** /36 months/  
\$2,350 down  
payment/\$810  
freight required  
**NO SECURITY DEPOSIT**

SURROUND YOURSELF WITH A SURPRISING TOUCH OF LUXURY. THIS BUICK COMES WITH...

3100 SFI V6 engine, 4-speed automatic transmission, 4-wheel ABS, remote keyless entry, 6-passenger seating, air conditioning, air filtration system, tilt steering, Next Generation dual front air bags.

**PURCHASE**  
**\$23,468**  
(excludes freight \$810)



## LESABRE BY BUICK

**SMARTLEASE**  
**\$358** /36 months/  
\$4,380 down  
payment/\$920  
freight required  
**NO SECURITY DEPOSIT**

LESABRE'S LUXURIES INCLUDE THE COMFORT OF SAFETY AND SECURITY FEATURES BEING BUILT RIGHT IN. THIS BUICK COMES WITH...

205 HP V6 engine, 4-wheel ABS, Next Generation dual front air bags, remote keyless entry, power windows/locks, tilt/cruise, 6-way power driver's seat.

**PURCHASE**  
**\$26,998**  
(excludes freight \$920)

LIMITED-TIME EVENT. HUGE SELECTION. SEE YOUR PONTIAC • BUICK • GMC DEALER.

 The GM Card® Roadside ASSISTANCE

**You should know this:** \*Based on a 36 month lease for Sunfire Coupe 1SA, Grand Prix GT 1SA, Century 1SA, LeSabre 1SD and 24 month lease for Safari 1SA and Sierra 1SL. A down payment or trade of \$1,400/\$3,000/\$2,350/\$4,380/\$3,300/\$2,480 required. No security deposit required. Total obligation is \$8,528/\$13,368/\$12,718/\$17,268/\$9,492/\$6,992. Annual kilometre limit 20,000 km, \$0.12 per excess kilometre. Other lease options available. \*\*Freight as indicated, licence, insurance, air conditioning excise tax and taxes not included. Dealer may sell or lease for less. †Financing on approved GMAC credit only. Example: \$10,000 at 1.9% APR, the monthly payment is \$216.51 for 48 months. Cost of borrowing is \$392.48. Total obligation is \$10,392.48. Down payment, trade and/or security deposit may be required. Monthly payment and cost of borrowing will vary depending on amount borrowed and down payment/trade. ††Offers apply to 1998 new or demonstrator models equipped as described, and applies to qualified retail customers in Central Ontario only. 1.9% Financing available only on select 1998 models. Limited time offers which may not be combined with other offers. See your dealer(s) for conditions and details. www.gmcanada.com is a trademark of General Motors Corporation. ©Registered Trade mark of General Motors Corporation, TD Bank licensed user of Mark.

