

# Spectacular Specials!

## 1998 Expedition XLT 4x4



Stk#8755

- Speed Control • Bright Electric Mirrors • Air Conditioning
- AM/FM/Cassette • Fog Lamp/Mirror Group • 5.4L EFI V8 Engine • 4-spd Auto Trans. • P625/70R-17 OWL All-Terrain Tires • 3.73 Ratio Limited Slip Axle • Lighted Running Boards • Trailer Towing package • 17" Cast Coated Aluminum wheels

Lease For  
**\$454/mth\***

## 1998 Explorer XLT 4x4



Stk#8771

- Luggage Rack • Luxury Group • Front Overhead Console • Hi-Series Floor Console • Electronics Group • Fog Lamps • Floor mats/Cargo Cover Group • 4.0 SOHC Engine • Automatic Overdrive trans. • P235 OWL All-Terrain Tires • 3.73 LS AXLE/Trailer Tow • Running Boards • Cassette with Multi-Disc CD Changer

Lease For  
**\$479/mth\***

## 1998 Explorer Sport 4x4

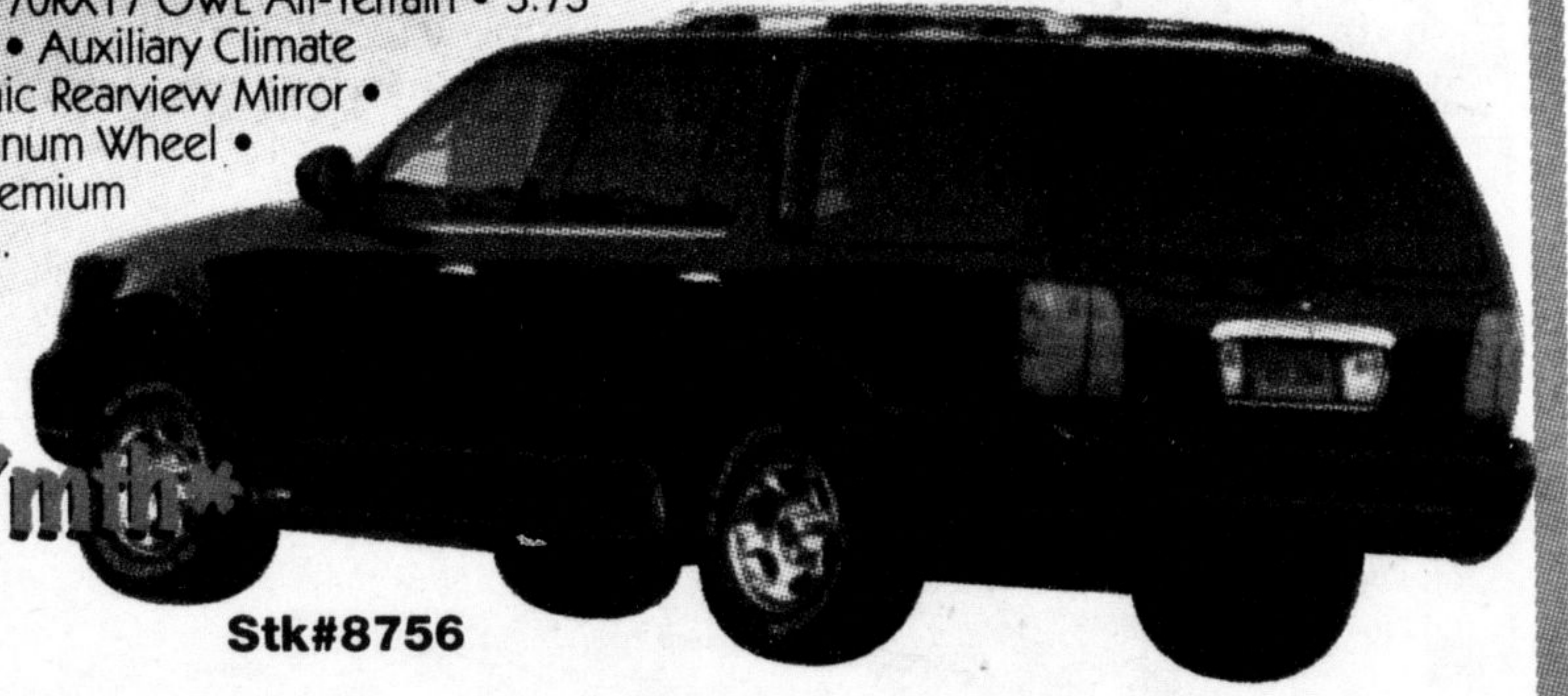


Stk#8760

- Floor Mats, Colour Key Carpet • Luggage rack • Sport Trim • 4.0 SOHC Engine • Auto. Overdrive Trans. • Premium Sport Package • Step Bar • Luxury Group • Electronics Group • Front Overhead Console • Hi-Series Floor Console • Fog Lamps • Cass. with Multi Disc CD Changer

Lease For  
**\$379/mth\***

## 1998 Navigator 4x4



Stk#8756

- 2nd Row Leather Buckets • 4 Corner Load Leveling Suspension • 5.4L EFI V8 Engine • 4-spd Auto Trans • P255/70RX17 OWL All-Terrain • 3.73 Ratio Limited Slip Axle • Auxiliary Climate Control • Electrochromic Rearview Mirror • 17" Chrome Cast Aluminum Wheel • 6 Disc CD Changer • Premium 290 Watt audio W/Cass.

Lease For  
**\$724/mth\***

\*All payments based on 36 month Ford Red Carpet Lease - 20,000 km/yr. Downpayment of \$4,000 or trade equivalent - except on Navigator (\$5000) All are plus, freight, Tax Lic. O.A.C.



Tom Gallinger, Randy Winterle, Rob Browning, Jim Critchell, Elizabeth Jennings, Barb Gallina, Kim Wittick, Brian Goodwin, Terry Green, Rob Farrant, Gary Hannah, Mike Laworthy, Jef Green

NO PRESSURE SALES ASSISTANCE	SUPER VALUE LOW EVERY-DAY PRICES	COMPLETE QUALITY INSPECTION	EASY AFFORDABLE FINANCING	* 30-DAY COMPREHENSIVE WARRANTY	EXTENDED SERVICE AGREEMENTS AVAILABLE	FULL SERVICE MODERN FACILITIES	LEASING AVAILABLE ON MOST VEHICLES	ASK US ABOUT OUR PROGRAM ADVANTAGE PLUS LEASING PLANS	CUSTOMER SERVICE REPRESENTATIVES

## OVER 60 VEHICLES TO CHOOSE FROM!

<p><b>'96 CONTOUR GL SPORT</b> 6 cyl., auto., loaded Stk. # 1148A <b>KILOMETRES</b> 038675 <b>\$14,995</b></p>	<p><b>'98 MUSTANG 2 DR</b> 6 cyl., Auto, Loaded Stk. #1150A <b>KILOMETRES</b> 016934 <b>\$19,475</b></p>	<p><b>'96 CROWN VIC XL</b> 8 cyl., auto, loaded Stk. # 1153A <b>KILOMETRES</b> 044310 <b>\$22,995</b></p>	<p><b>'95 CONTOUR SE</b> V6, auto, loaded, leather Stk. # 1115A <b>KILOMETRES</b> 053164 <b>\$15,989</b></p>	<p><b>'97 CROWN VIC</b> 8 cyl, auto, loaded Stk.# 1152A <b>KILOMETRES</b> 017438 <b>\$22,975</b></p>
<p><b>'97 AEROSTAR XLT AWD</b> 4.0L, All-wheel drive Stk. # 1022A <b>KILOMETRES</b> 038623 <b>\$18,485</b></p>	<p><b>'94 AEROSTAR XLT EXT</b> 4.0L, V6, auto, loaded, sport Stk. #1058A <b>KILOMETRES</b> 078217 <b>\$12,995</b></p>	<p><b>'96 AEROSPORT</b> air, AM/FM Cass, P Wind, P Locks Stk. #1139A <b>KILOMETRES</b> 032589 <b>\$14,955</b></p>	<p><b>'96 WINDSTAR</b> P.W., P.Locks Stk. # 1131A <b>KILOMETRES</b> 077634 <b>\$16,995</b></p>	<p><b>YOU FIX, YOU SAVE "SPECIALS"</b></p> <p>'93 F-150 XLT 1016A \$7,900 "as is" '92 Gr. Caravan LE 88421A \$7,900 "as is" '91 Cherokee LTD 1008B \$9,000 "as is" '91 GMC Tracker 98194A \$4,900 "as is" '89 Olds Wagon 1025C \$1,900 "as is" '89 Mercury Topaz 1116A \$1,400 "as is" '89 Ford Festiva 8685A \$2,895 "as is" '88 Hyundai Excel 1050B \$1,200 "as is" '88 F-250 S/C 1127B \$4,900 "as is" '88 Ranger P/U 7610B \$1,500 "as is"</p>

\* 30 Day Warranty applies to fully reconditioned vehicles only. Call dealer for details.

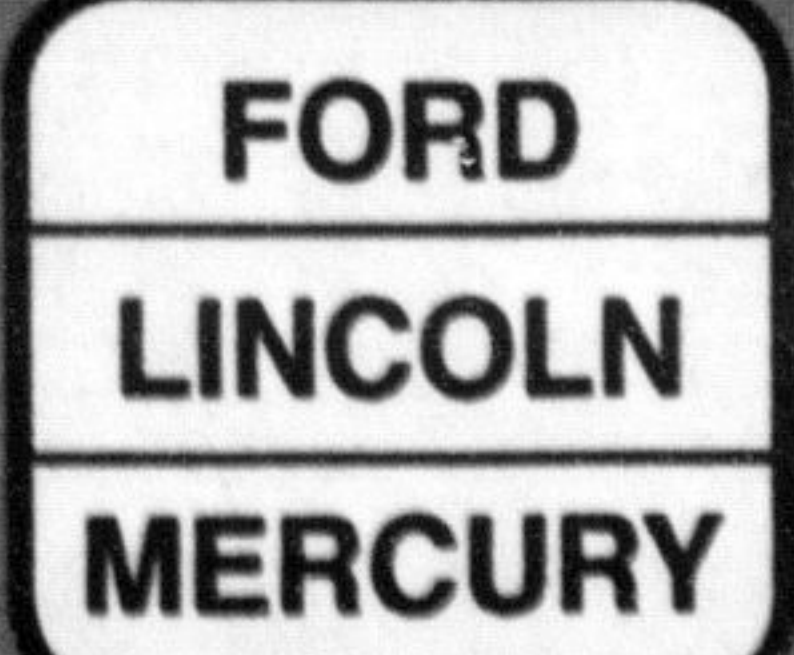
Serving Halton since 1967

PLAN IT Payments based on RCL Lease, with \$2,000 Down plus Taxes. Call Dealer for Details.

ASK US ABOUT



# GALLINGER



MOTORS LIMITED

• 655 MAIN ST. E., MILTON • 875-3673