

The Canadian Champion

BEST HOMES

MILTON, ONTARIO

878-2341

July 7, 1998

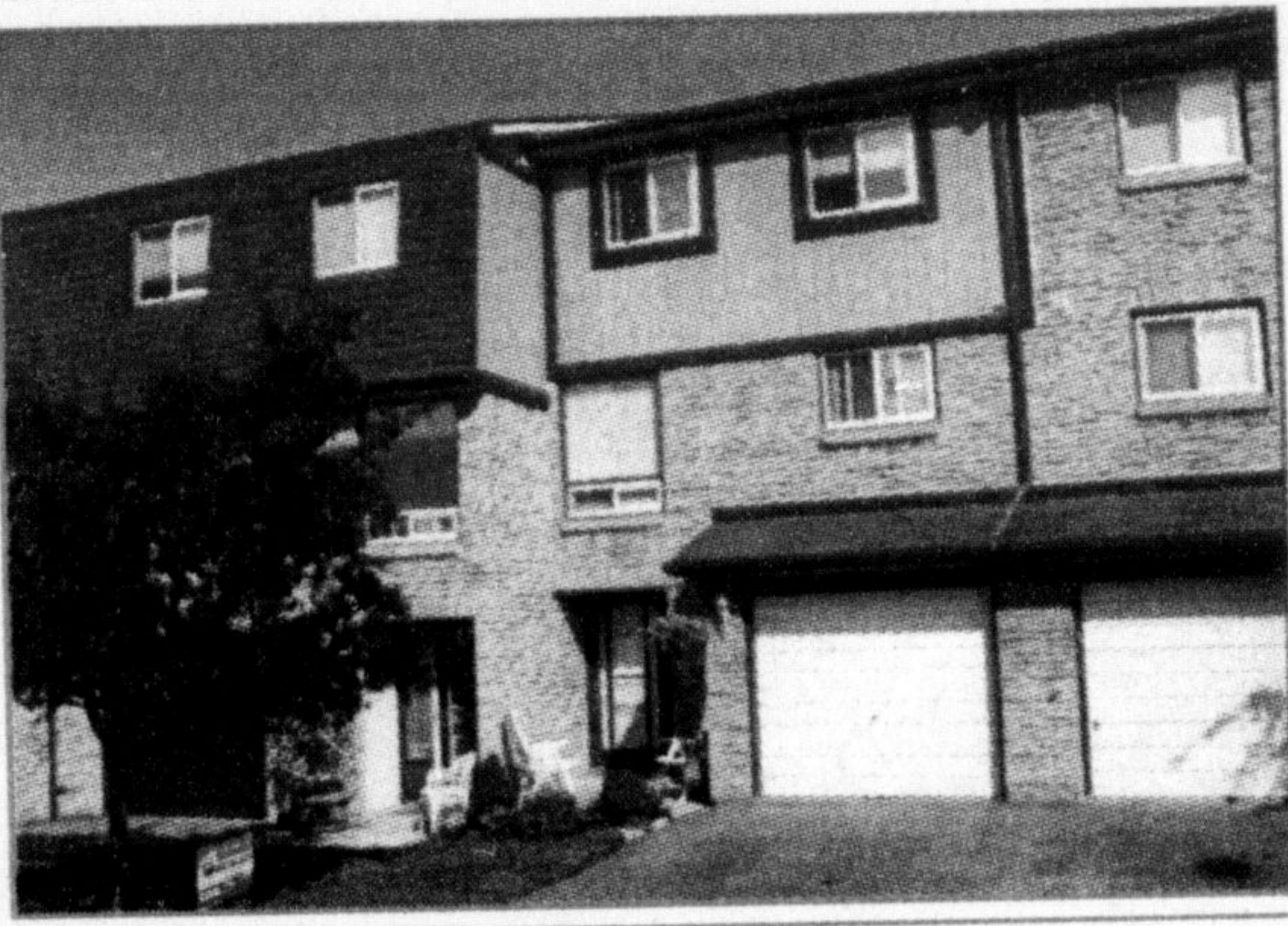


\$219,900

ROYAL LEPAGE

JUST LISTED. Beautifully upgraded and sure to please! Improvements include: kitchen/laundry/mud room addition, Barzotti kitchen cabinets, finished lower level, newer roof and windows. Private, premium lot features inground pool, deck and perennial gardens. Don't miss viewing this home!

ROYAL LEPAGE REAL ESTATE SERVICES LTD.
BARB LAFLECHE Sales Rep. 878-8101

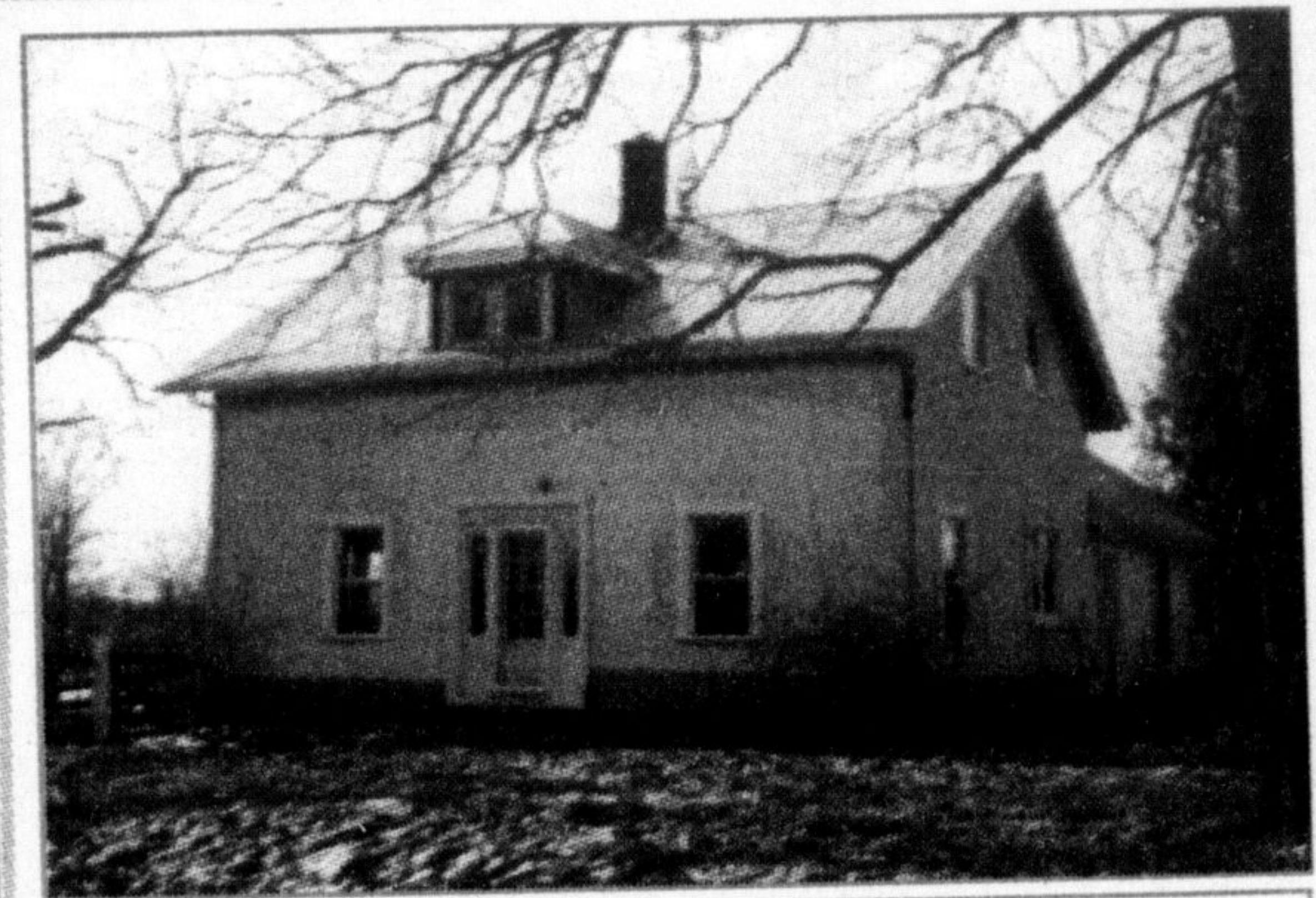


\$136,900

RE/MAX®

QUALITY THROUGHOUT Beautiful townhome shows with pride of ownership. Gas fireplace in family room, remodelled kitchen with oak cupboards and new flooring, new broadloom throughout in '96, oak railings and banisters, all new windows in '96. Tastefully decorated and painted throughout. A real quality unit.

RE/MAX BLUE SPRINGS REALTY (HALTON) CORP.
MOE MILJOUR, Assoc. Broker, 878-7777



\$299,900

RE/MAX®

EARLY ONTARIO FARMHOUSE. Early stucco over log farmhouse, spacious inside -mostly new windows, recent furnace, maple kitchen, floors and trim. Plus bank barn with horse stalls and run-ins, year-round stream and pond. Two stands of bush, balance arable. Hundreds of trees planted around perimeter. 10 mins. to 401. A rare find and won't last!

RE/MAX BLUE SPRINGS REALTY (HALTON) CORP.
ANNE TAYLOR, Assoc. Broker, 878-7777



\$429,900

RE/MAX®

JUST LISTED Impressive custom-built Georgian style home set on 5 acres. Beautifully manicured grounds with wooded property creates a park-like setting. This home features very large rooms, 4 bedrooms, 2 baths, sunroom off kitchen, French doors, fireplace in family room & convenient entrance to basement from double car garage. Nice private location & just minutes to Campbellville.

RE/MAX BLUE SPRINGS REALTY (HALTON) CORP.
KEVIN HOWDEN, Sales Rep., 878-7777

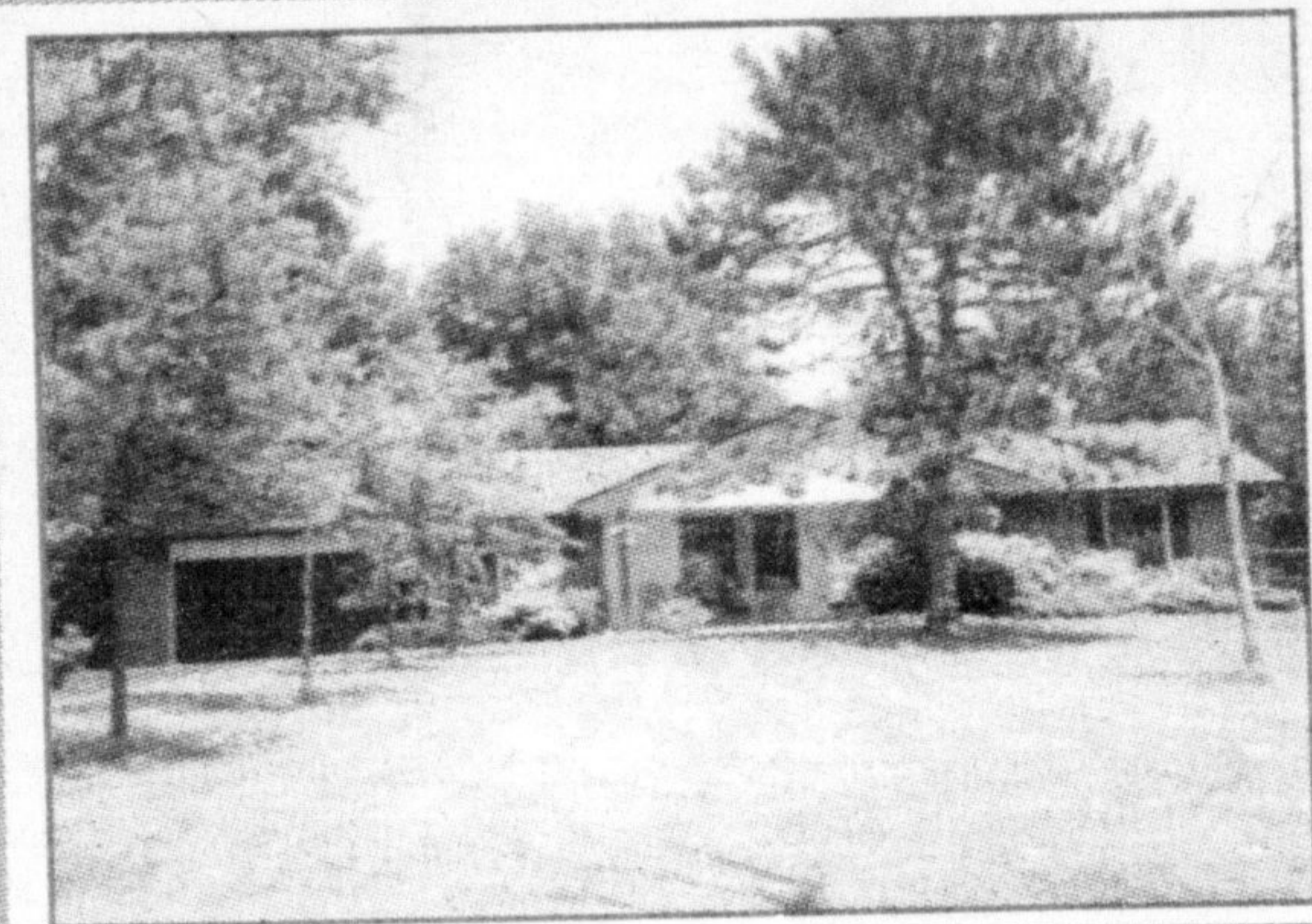


\$209,000

ROYAL LEPAGE

4 BEDROOM large in-town town lot surrounds this lovely family home. Spacious foyer, patio doors to two tier deck (10'x12' & 13'x12'). Fenced yard. New gas furnace, central vac, 1 & 2nd floor windows being replaced with thermo pane. Just move in and enjoy.

ROYAL LEPAGE REAL ESTATE SERVICES LTD.
VIRGINIA BRAZEAU, Sales Rep. 878-8101

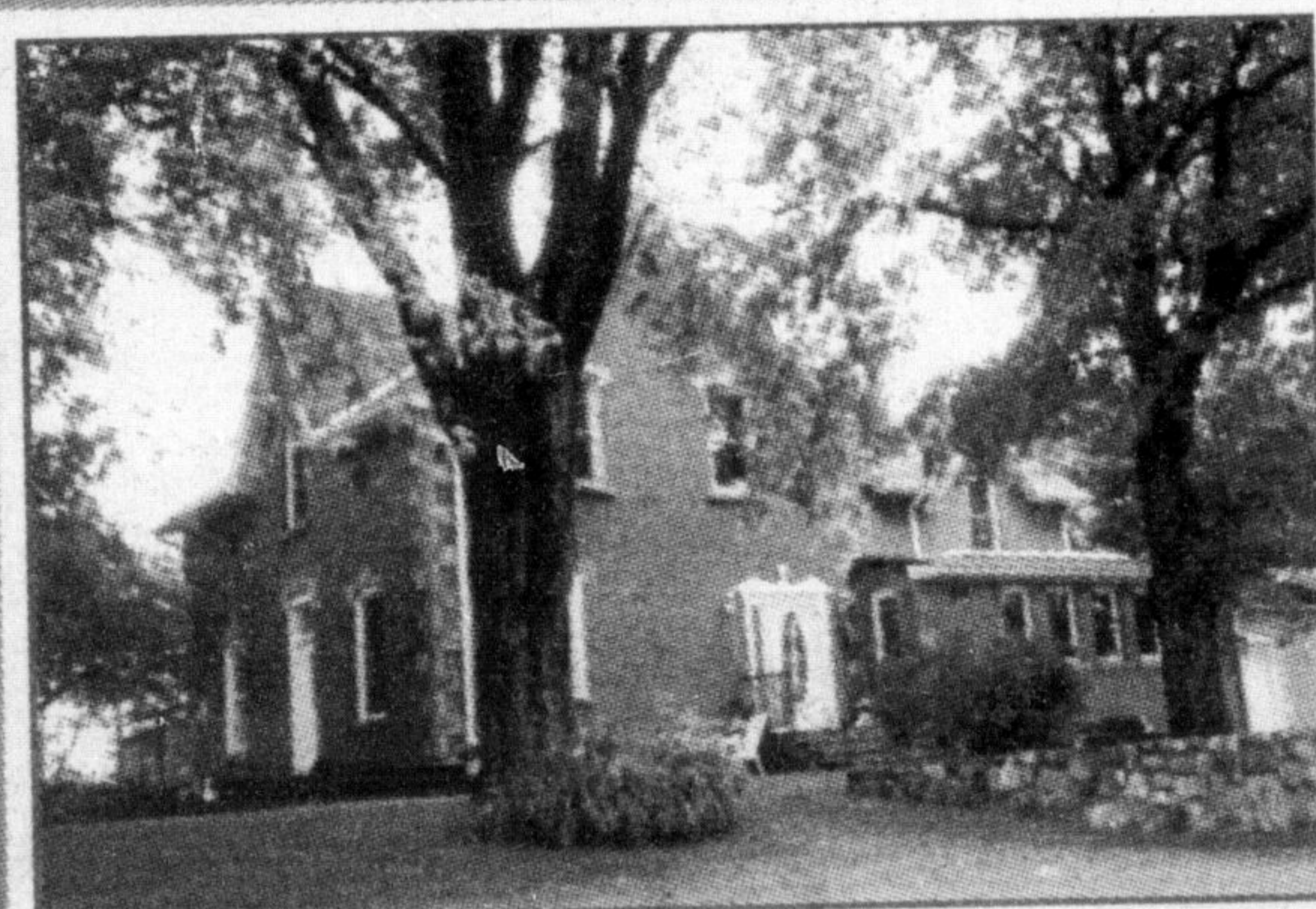


\$339,000

ROYAL LEPAGE

RAVINE LOT fabulous location for this well-maintained executive bungalow on the 16 Mile Creek. Patio doors from kitchen and master bedroom to wrap-around deck! Enjoy the birds, trees, inground concrete 20' x 40' pool & a location that is perfect for Oakville/Milton/Mississauga proximity.

ROYAL LEPAGE REAL ESTATE SERVICES LTD.,
VIRGINIA BRAZEAU, Sales Rep. 878-8101



\$389,000

ROYAL LEPAGE

20.7 ACRES updated farmhouse with replaced thermopane windows, high efficiency furnace, family room with fireplace and country kitchen. Beautiful English country gardens, mature trees, 30' x 30' garage, drive shed 16' x 32'. Definitely not a drive-by. Just call for details.

ROYAL LEPAGE REAL ESTATE SERVICES LTD.
VIRGINIA BRAZEAU, Sales Rep. 878-8101



\$324,000

ROYAL LEPAGE

BUNGALOW with 2nd floor library, bathroom, huge bedroom & huge principal rooms, nanny-suite with separate entrance, oversized rec rm. w/2nd fireplace. Patio doors off gourmet kitchen to deck & fabulous view of rock gardens, woods, pond & goslings. Located between Derry & Campbellville Sideroad for commuting access.

ROYAL LEPAGE REAL ESTATE SERVICES LTD.
VIRGINIA BRAZEAU, Sales Rep. 878-8101



\$749,000

ROYAL LEPAGE

42 ACRES a long winding lane through the woods and over a stream leads to a sunny clearing with 2 waterfalls and ponds. The executive bungalow features walnut floors, 3 fireplaces and slate decking. A guest house, triple garage and barn are set against mature trees — it's picture perfect!!

ROYAL LEPAGE REAL ESTATE SERVICES LTD.
VIRGINIA BRAZEAU, Sales Rep. 878-8101