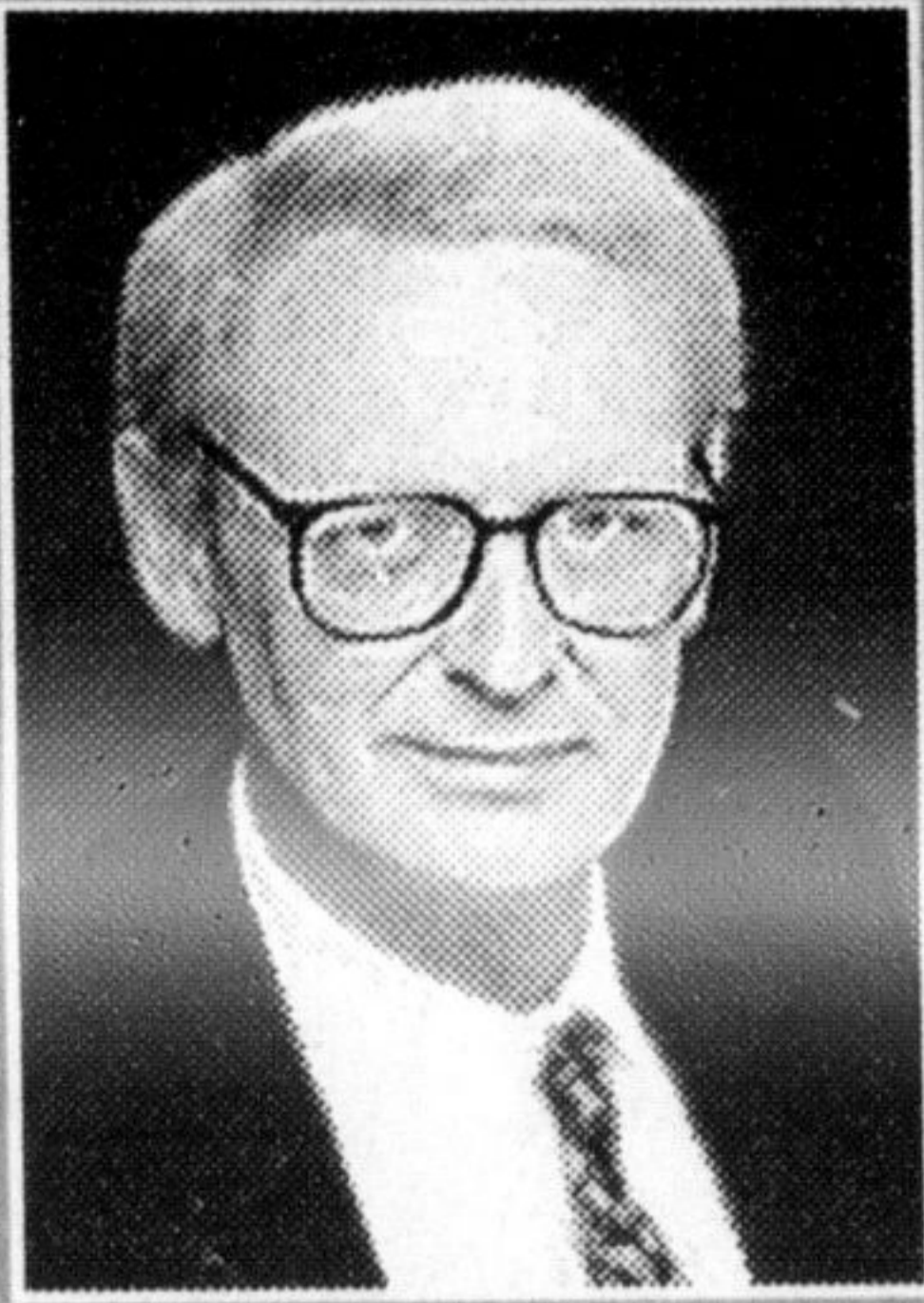


Looking for a place to... **RENT, BUY or SELL!**

You can do it all in **The Canadian Champion BEST HOMES** Call **Andrea Boyle** at **878-2341**



John Weide
ASSOCIATE BROKER

Sutton GROUP

sutton group - people & properties inc.
AN INDEPENDENT MEMBER BROKER

Your **Halton-Milton Connection**
905-844-5000

internet: <http://www.mls.ca>



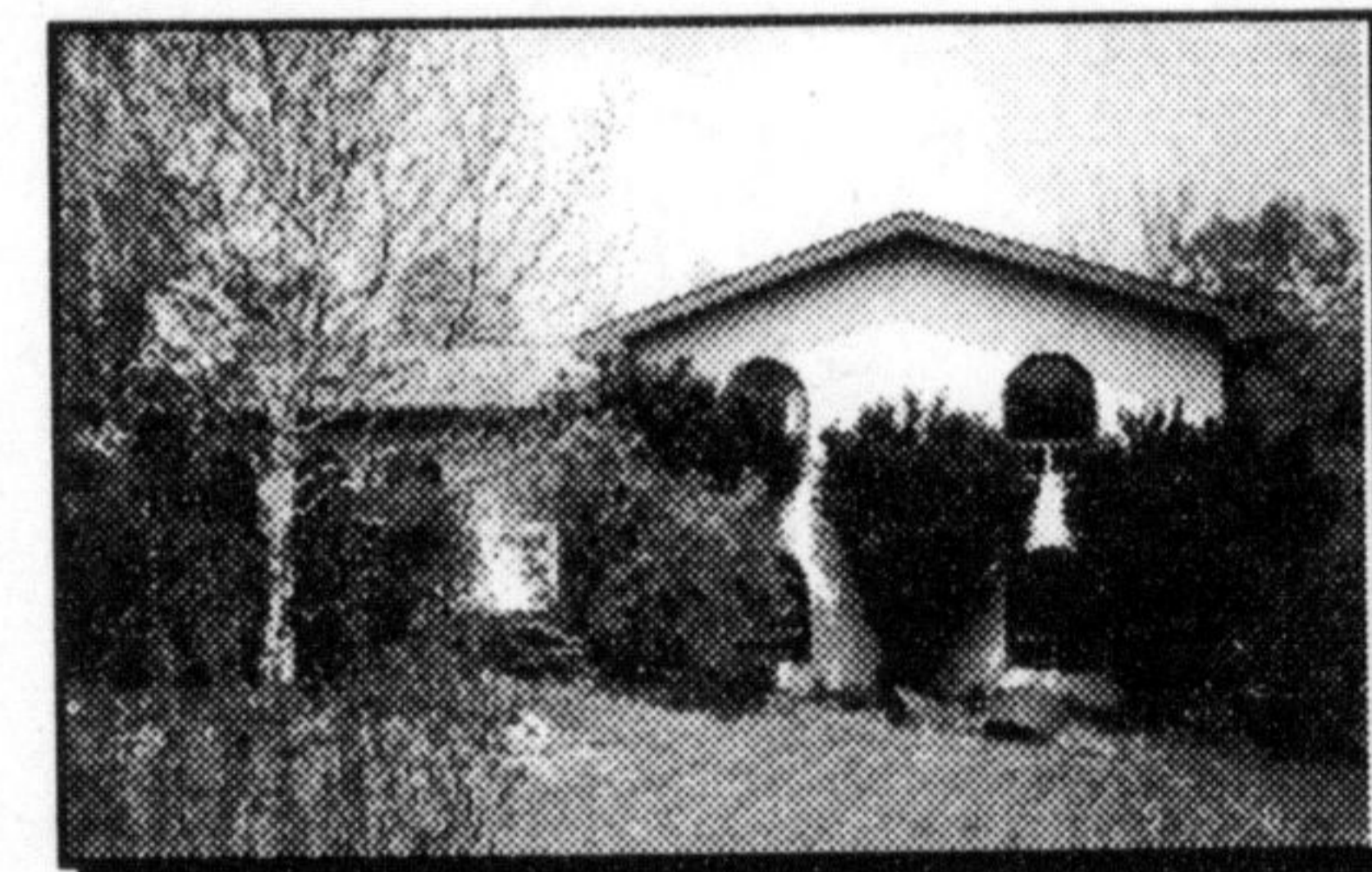
2 ACRES \$285,000
Just North of Milton. Easy access to all major centres. Well built 3 bedroom home in country, complete with large barn. Call **John Weide 844-5000**



42.25 ACRES \$234,900
Vacant land located near Campbellville, land presently used for agricultural, combined with woodlands, fields and stone walls. Ideal for horses & or estate, dry land. Investigate today! Call **John Weide 844-5000**



VILLAGE OF CAMPBELLVILLE - INCLUDES ALL FURNITURE \$379,000
A classic custom built all brick 2 storey home. Open floor plan, finished on 3 levels - main floor dining room, living room, den family room and a sunroom. 3 spacious bedrooms with master ensuite. Walkout from lower level rec room with bar and a games room, central vac, skylights, 9 ft ceilings on main level. Triple car garage, lawn sprinkler system all on 1 acre landscaped lot in a popular estate subdivision. Call **John Weide**



HALTON HILLS ARTIST'S HOME, 3 ACRES \$329,900
This fine split level home is privately situated on 3 acres. It is architecturally unique. Cathedral ceilings, arched windows, large open floor plan, living room with stone fireplace, ground level family room, 3 or 4 bedrooms, L-shaped dining/living room, double detached garage. Solidly built. Enjoy the country, just west of Speyside, north of Milton. Call **John Weide**



THE "STOWECLIFF" ESTATE: EDGE OF BURLINGTON \$534,900
A magnificent quality custom built English tudor style home. country lifestyle close to the city, approx. 5,000 sq.ft. Finished, 3,800 sq. ft on main levels, large principal rooms. 3 or 4 bedrooms, 4 bathrooms, 3 fireplaces. Beautifully upgraded kitchen with sunroom. Grade level rec room and office. Pegged oak flooring and broadloom, many extras. High elevation on the escarpment, on a clear day, you can see over Burlington, Oakville to the CN Tower and almost heaven. Large lot with pond below cliffs. Call **John Weide**



LOG HOME ON 18 ACRES \$469,900
A long lane leads to this large 1 1/2 storey home built of red west coast cedar logs and wood. Rustic country charm permeates throughout the home, open kitchen with eat-on area, main floor den, 2 fireplaces and 4 bedrooms. Double car garage. 18 private acres of Niagara Escarpment woodlands - close to Campbellville and Crawford Lake. South of 401. Call **John Weide**



Bob Fleming's Gold by the Gram
The Jewellery Store that makes house calls!
Gold • Diamonds • Gemstones
Visit us Saturday mornings at Kalena Flowers
Fair Prices - Free Advice - Fully Guaranteed
878-4572

Hands Across the World
Cultural Day Celebrations
and the 25th Year Anniversary of the Halton Regional Police Service
July 5th, 1998
11:00 a.m. to 7:00 p.m.

St. Volodymyr Cultural Centre
Hwy. 5 at Fourth Line, Oakville
CANADA'S BIRTHDAY

- Citizenship Court
- First Nations Ceremonial Opening
- Displays by Fire Dept., R.C.M.P., O.P.P., Ambulance, Child Find, Salvation Army and Saint Johns Ambulance
- International Dance Groups
- Music, Games, Arts & Crafts, Foods, Guest Speakers of the World

Free Admission
Free Parking

Halton Regional SILVER JUBILEE 25 YEARS OF COMMUNITY SERVICE Police Service

Advertisement sponsored by Canadian Heritage

AMERICAN EXPRESS® TRAVEL
IS PROUD TO ANNOUNCE

The way to go!
Bruce Hood Travel
Bruce Hood Enterprises Ltd.
Professional Travel & Cruise Officials

AMERICAN EXPRESS®

AS THEIR REPRESENTATIVE OFFICE
IN THE TOWN OF MILTON

Visit Our Office For All Your
Vacation and Financial Service Needs
at
16 Martin St. Downtown
878-2886

Bringing The World To You Since 1961

DISCOVER JUST HOW EASY PLANNING A VACATION
CAN BE WHEN YOU CALL BRUCE HOOD TRAVEL

AMERICAN EXPRESS®
Travel Services
Representative

®: used under license from American Express Company.
copyright©: Amex Canada Inc., 1998.