



GET MOVING IN '98

RE/MAX **Miltowne Realty Corp.**

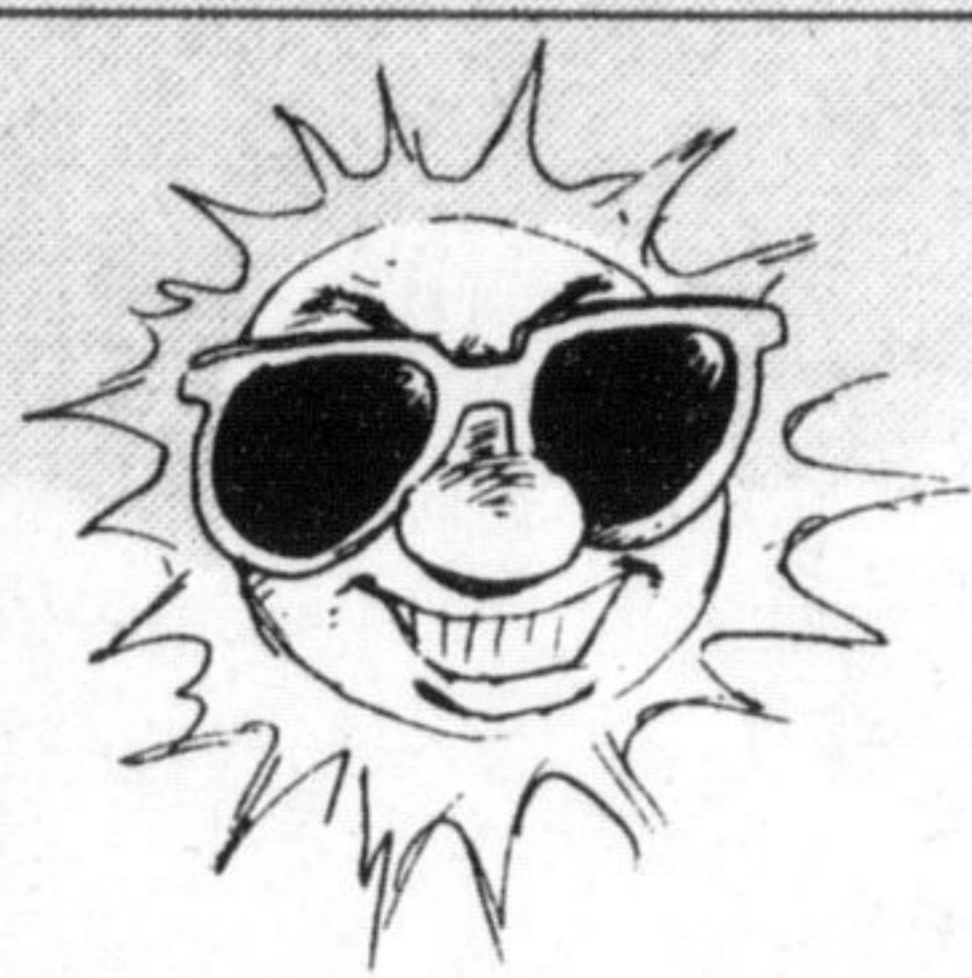
e-mail: miltowne@globalserve.net

373-7777

22 ONTARIO ST. S.
INDEPENDENTLY OWNED & OPERATED

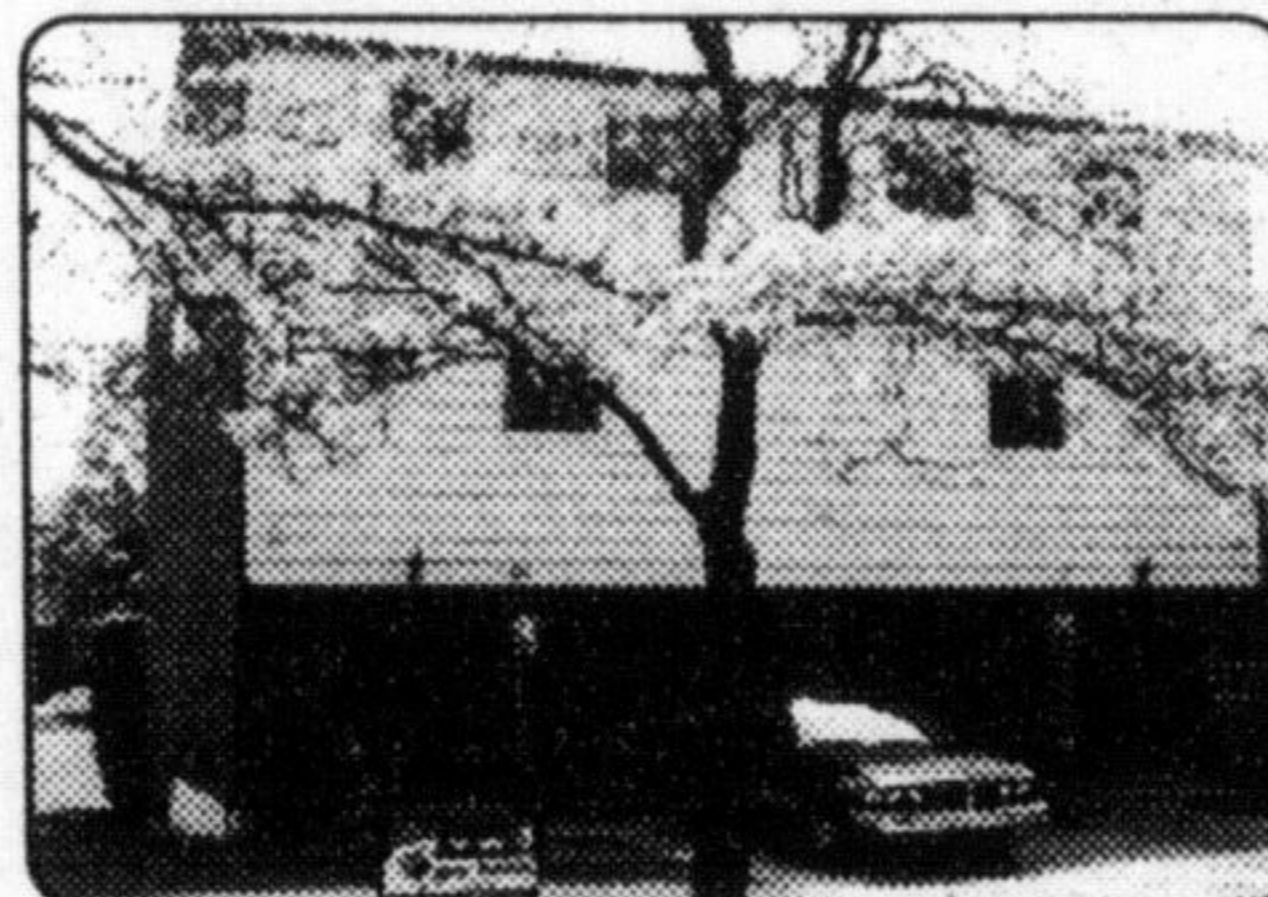


Glen Thomas
Associate Broker
878-7777



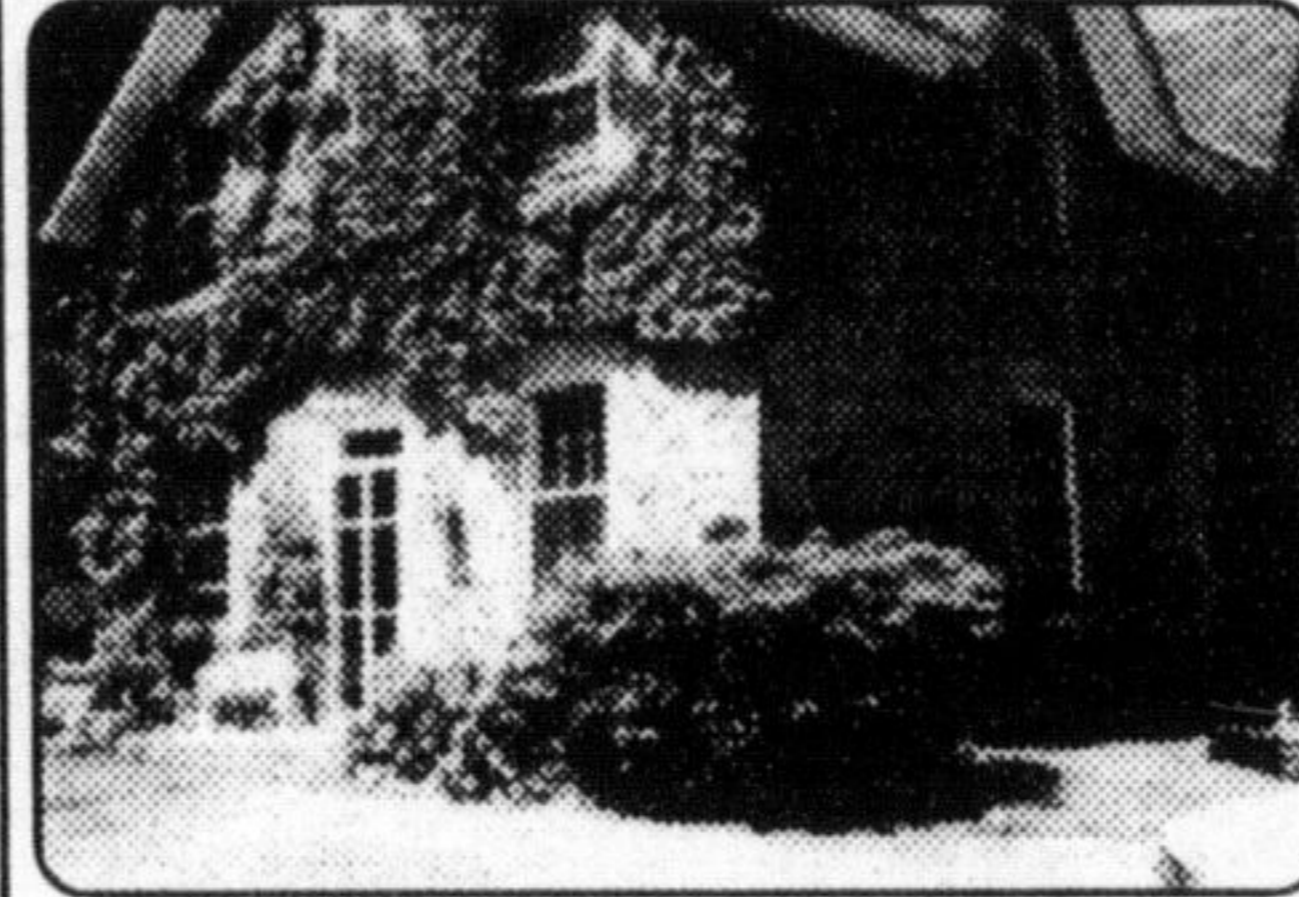
List with Glen or Gary this summer. THE MARKET IS HOT!

END UNIT TOWNHOME



Enjoy the convenience of this 3 bedroom end unit townhome. Home is well decorated, newer carpeting throughout, located in Timberlea area of town. Quick possession available \$133,500.

GOTHIC STONE



Be one of the lucky few who own a Heritage award winner. 1876 Gothic schoolhouse. Large principal rooms, fully restored on a large village lot. Call for details. \$425,000.



Gary Thomas
Broker/Owner
Res. 875-3700
878-7777



PALOMINO Ranch

Exceptional custom homes, just west of Milton. 1/2 acre to 1 acre lots.



MODEL HOMES TO VIEW



Quick delivery homes available



Greenbelt! Conservation!

Park! Trails!



It's a way of life!

OPEN HOUSE

Saturday and Sunday 1-4 pm
From \$329,000

Derry Rd. West to Carlisle. Follow the signs.
Call for details and packages

REMEMBER YESTERYEAR



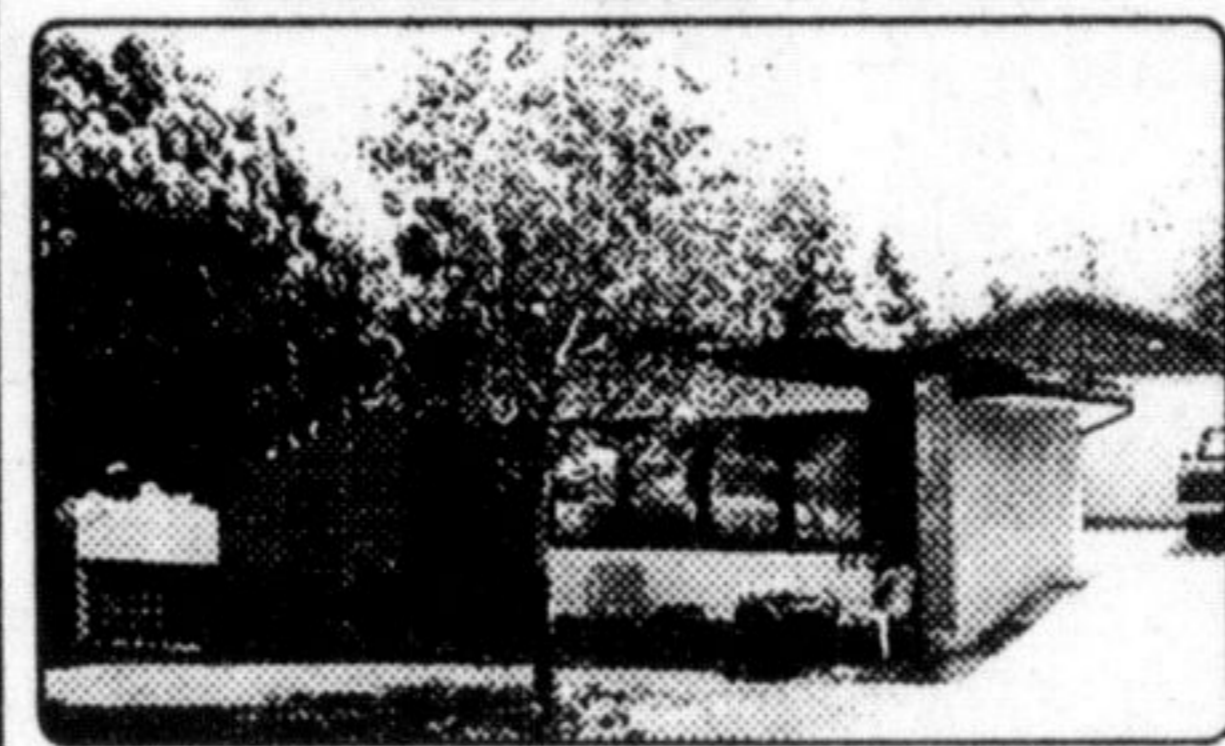
This is a solid 3 bedroom older brick home that has been very well maintained. Features beautiful oak trim throughout, oak flooring, elegant bevelled glass doors, detached double garage and a closed in porch for your enjoyment. Huge double lot. Please call for details on this in-town gem.

NEW HOME TO BE BUILT



Let a local builder build your dream home. We have a 50' x 145' lot ready for this 2,088 sq. ft. beauty. Features 3 bedrooms, vaulted ceilings, large eat-in kitchen and exceptional design. \$279,000. Call for details.

NICE SET-UP



Well maintained in-town sidesplit. Listen to these features. 10' cathedral ceilings w/wood beams, windows replaced ('95), roof ('93), finished rec. room w/gas fireplace. Plus an outstanding 24x26 workshop, 9' pwr door, 100 amp service and overhead furnace. Please call to view. \$184,900.

PALOMINO Ranch



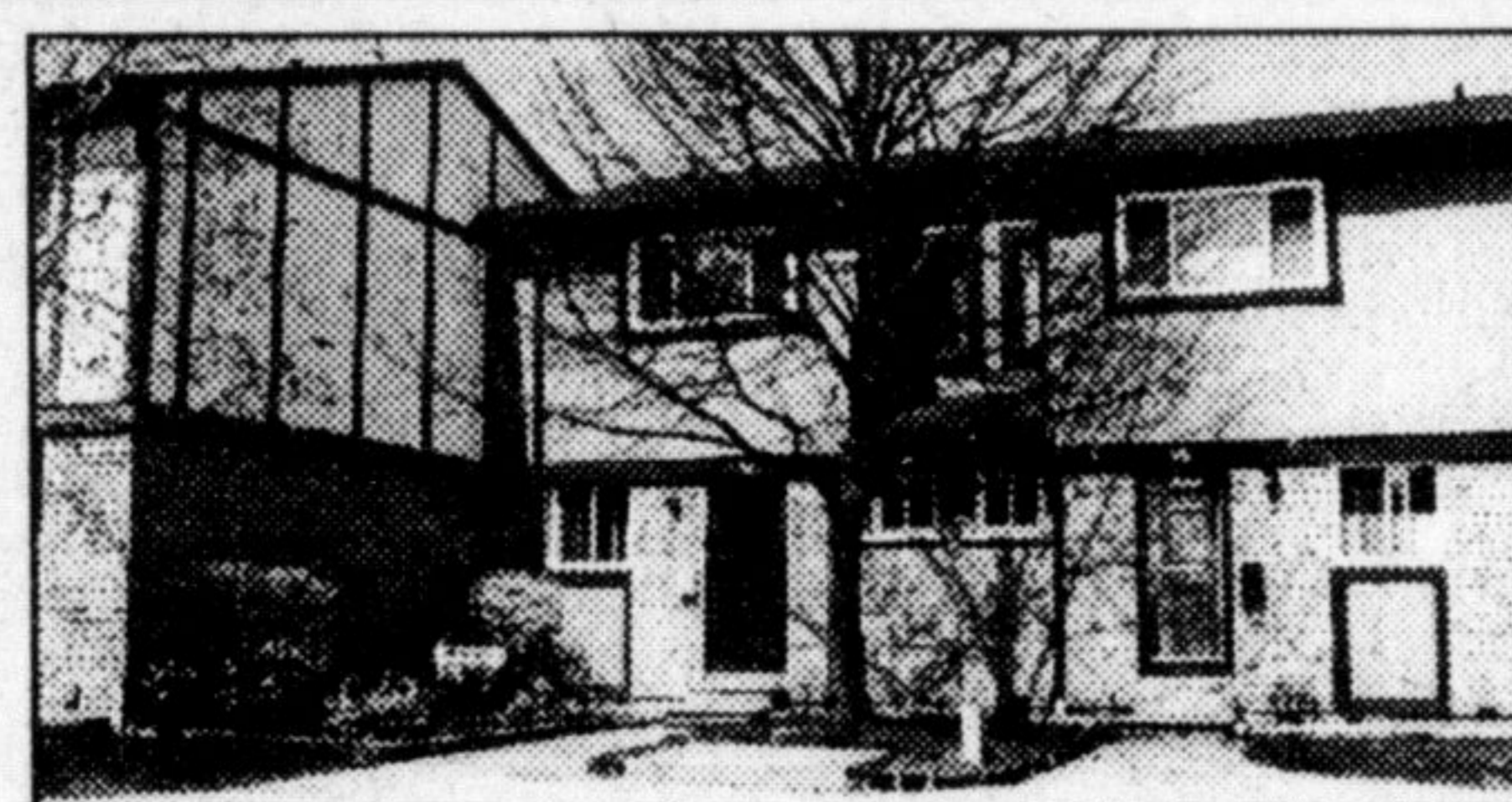
Beautiful new subdivision just west of Milton. Lots of new homes under way at Palomino Ranch. Choose bungalows and 2 storeys on roomy 1/2 acre to 1 acre lots. From \$329,000. Call for details.

INTERVIEW ONE OF US BEFORE YOU LIST YOUR HOME! CALL FOR EVALUATION TODAY!

RE/MAX * RE/MAX * RE/MAX * RE/MAX * RE/MAX *



SHERYL GRAY
Sales Representative
Office: 878-7777
Res. 875-1121
Tor. Line 825-4485



NO MORE RENTING

Call me today on this very affordable completely re-done 3 bedroom townhouse. All new broadloom, new flooring, new bathrooms, freshly decorated throughout. Only \$122,900.
Call 878-7777

RE/MAX * RE/MAX * RE/MAX * RE/MAX * RE/MAX *



TERI LYNN HILSON
Sales Representative
878-7777
Toronto: 825-4485
Res.: ... 876-4139



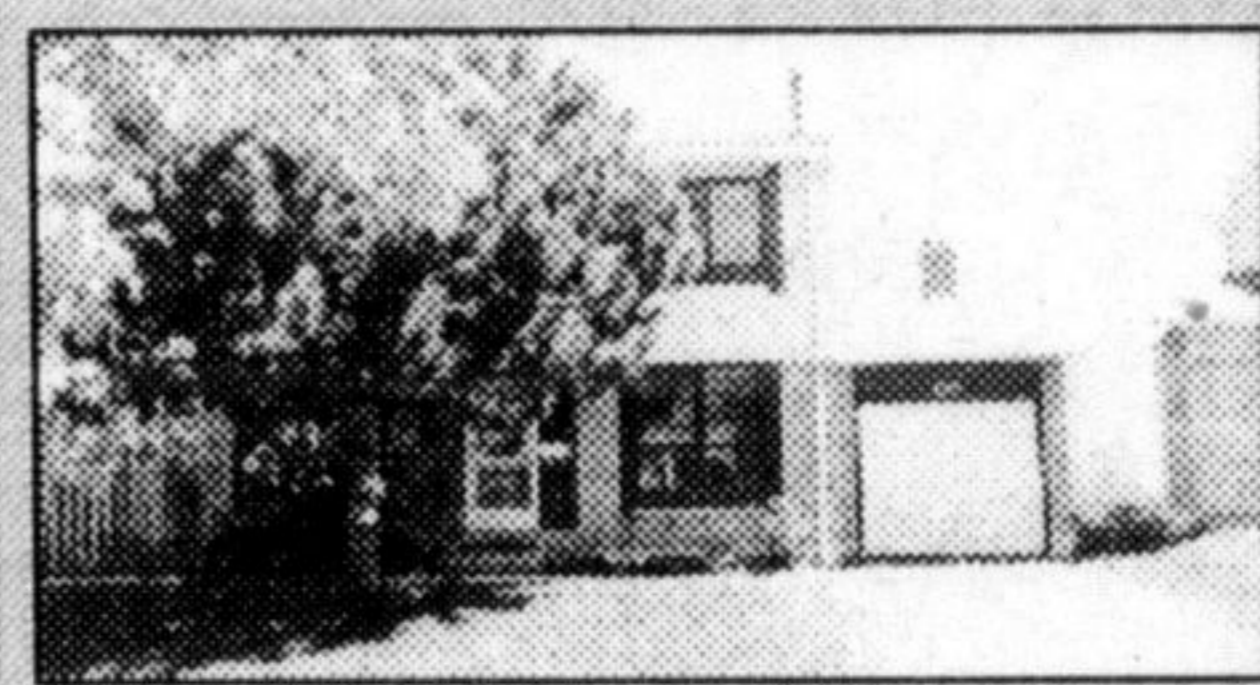
Investment Opportunity
This 3 bedroom home has a double garage as well as a workshop. It has C-1 zoning, great opportunity for the entrepreneur. Was 182,900 reduced to \$174,900. Call me today for an inspection.



THIS SPACIOUS 3 bedroom bungalow is located in a great area of town. It offers central air, central vac, fully finished basement with woodstove, many recent upgrades to the exterior of the home. Priced to sell at \$199,900. Quick closing available. Call me for an inspection today.



GLADYS CRANFORD
Associate Broker
878-7777
Res.: 875-3039



Spacious 3 bdrm. home on quiet street, close to school & park. Eat-in kitchen with walkout to parklike yard. Separate D.R., large L.R. with F.P., upgraded flooring, finished basement, single garage. Call to view. Asking 199,900.



Home has been completely re-done with new carpet and neutral paint. Offers 3 large bdrms with 4 pc. ensuite off master. Family room with F.P., eat-in kitchen. Double car garage. Bsmt has in-law potential. Reduced to \$224,900.



LINDSAY J. McLAREN
Sales Representative
878-7777 Office
(Res.) 854-2451
(Tor. Line) 825-4485



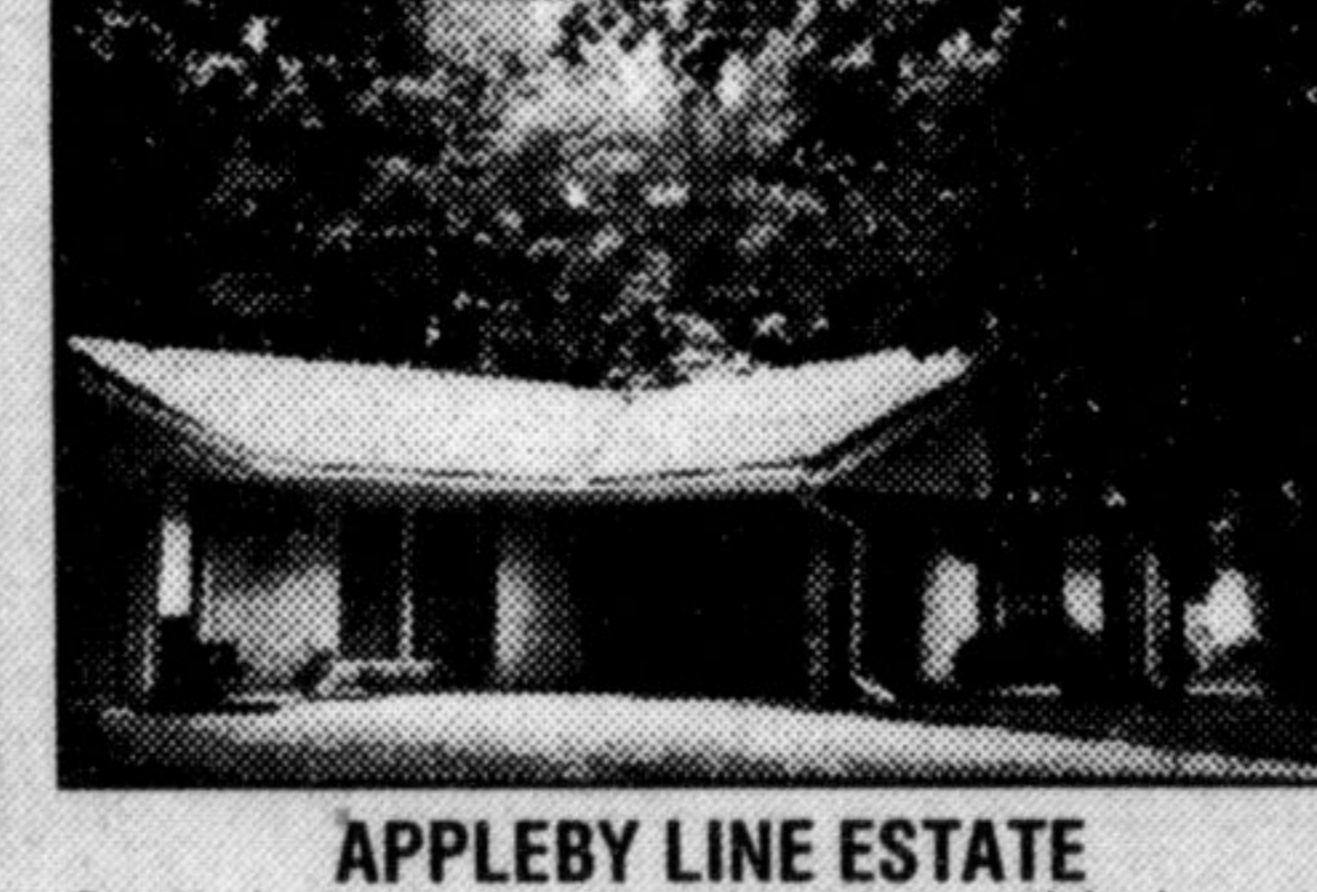
CAMPBELLVILLE MANOR

Stately & impressive this fine brick home of approx 5000 sq. ft. features very large principal rooms, separate dining room, huge kitchen with w/o to patio & inground pool, great room, study, MBR with ensuite and private retreat, huge games, rec room, extra kitchen on lower level, hi eff. Gas heat, central air & winding paved drive to massive 4 car garage. For further details please call: **Lindsay J. McLaren \$549,900**



CAMPBELLVILLE ESTATES

Stately and appealing this custom-built brick home on 2 acres with meticulous landscaping and circular paved drive. Features 4+1 bedrooms, 3 1/2 baths, sunken LR with marble fireplace, separate DR, custom oak kitchen with B/I appliances, main-floor FR with brick fireplace, rec rm & games rm, inground pool and spa, lighted tennis court, 4-car garage and much more. For further details on this fine home, call Lindsay J. McLaren. Reduced to \$610,000



APPLEBY LINE ESTATE

Secluded amongst mature trees this beautiful brick bungalow of approximately 2800 sq ft has all the luxury amenities. Custom kitchen with built-in appliances, sunken LR with FP. Large dining rm, main floor den, family rm with FP that opens to sun room that overlooks huge heated inground Gunite pool, patio and lighted tennis court. 3 bedrooms, 3 1/2 baths, rec rm, sauna, updated heating, A/C, roof and windows. 2 car attached garage & 4 car detached with loft above and set on 3 acres of mature trees and sprawling lawns. Just minutes to Milton. For further details please call Lindsay J. McLaren. \$469,900



JEAN SNOWDEN
SALES REP.
HALL OF FAME
878-7777

WOULD YOU BELIEVE NO CLOSING COSTS? HOW ABOUT DISCOUNTED INTEREST RATES?

Some banks are offering incentives such as these to attract your mortgage business. Let me give you all the details and help you select the option that best suits your situation.

STOP PAYING RENT!!!

With a \$6,750 downpayment you could own this end unit townhouse with a garage, sep. dining room and rec room, located in a nice area convenient to shopping. So call Jean now and wave your landlord farewell!!!

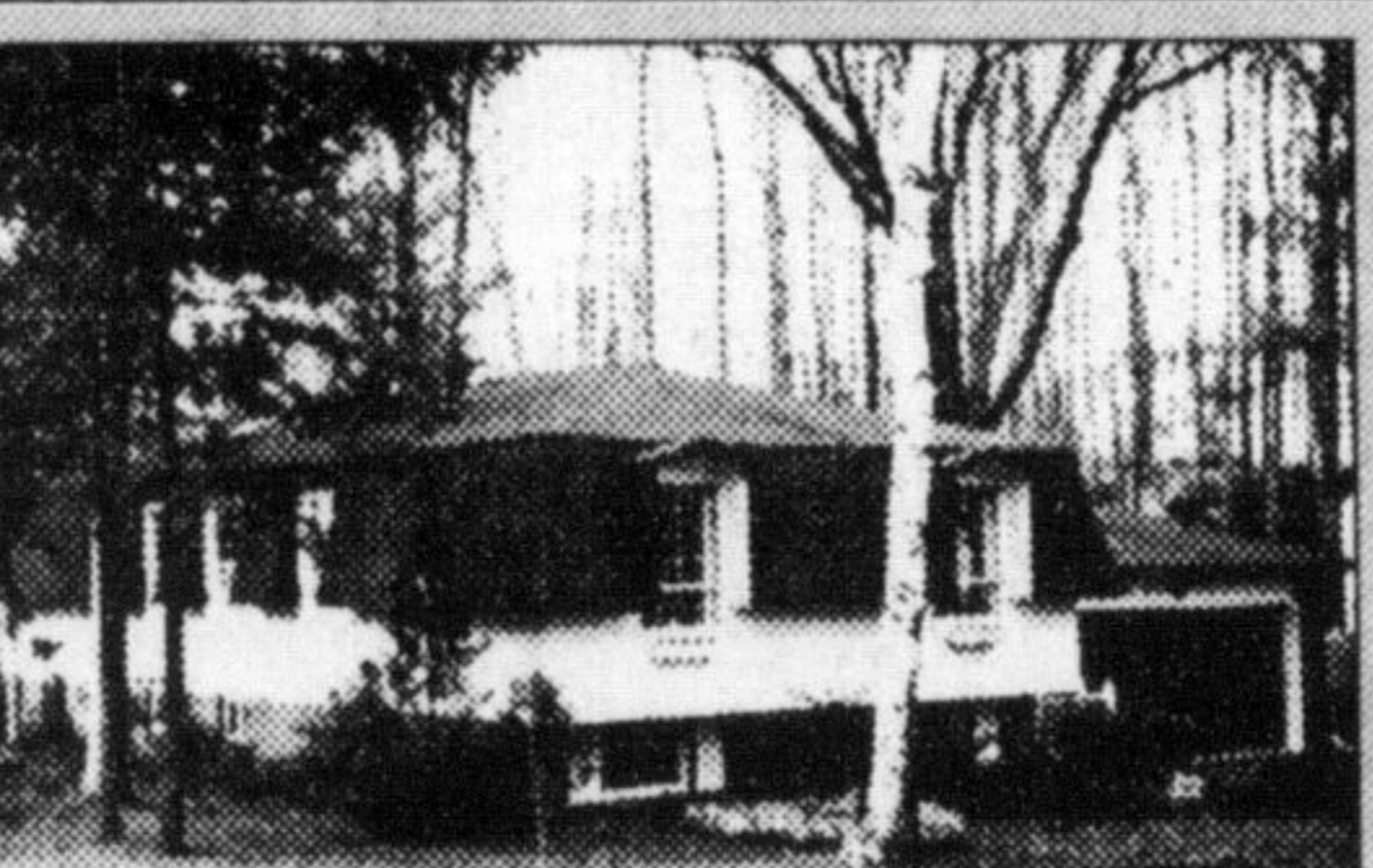


ANNE TAYLOR
Associate Broker
Town & Country
REGISTERED RELOCATION SPECIALIST
854-9833



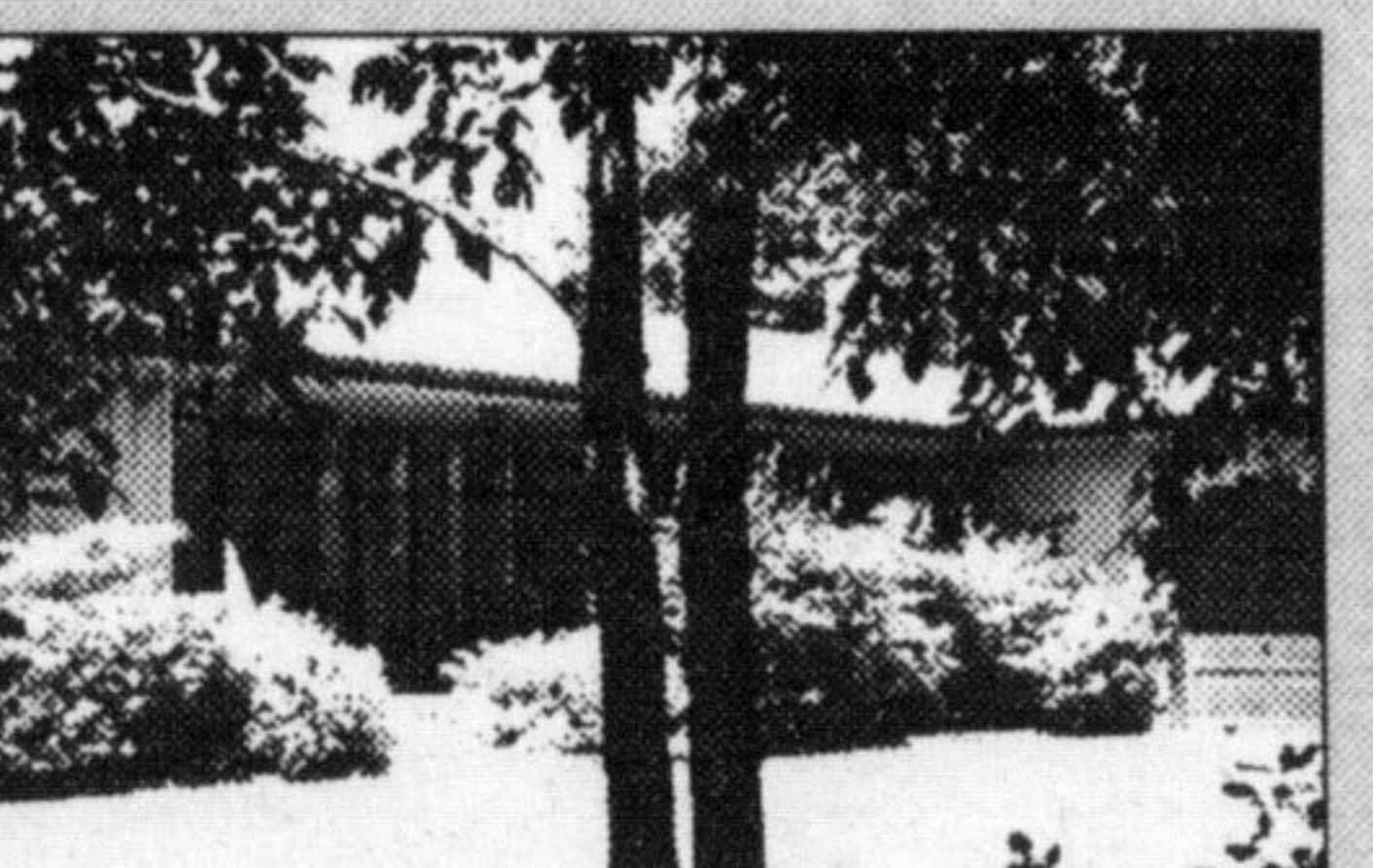
REDUCED \$249,900

TURN OF THE CENTURY CHARMER
Vintage farmhouse clad in pale yellow aluminum, dating from 1906 with two later additions. Frontage on two roads just north of Campbellville, totally private 23.75 acres with half conservation lands and half open, hundreds of trees planted. Five bedrooms, large country kitchen, possible inlaw suite, o/sized double garage. A rare find.



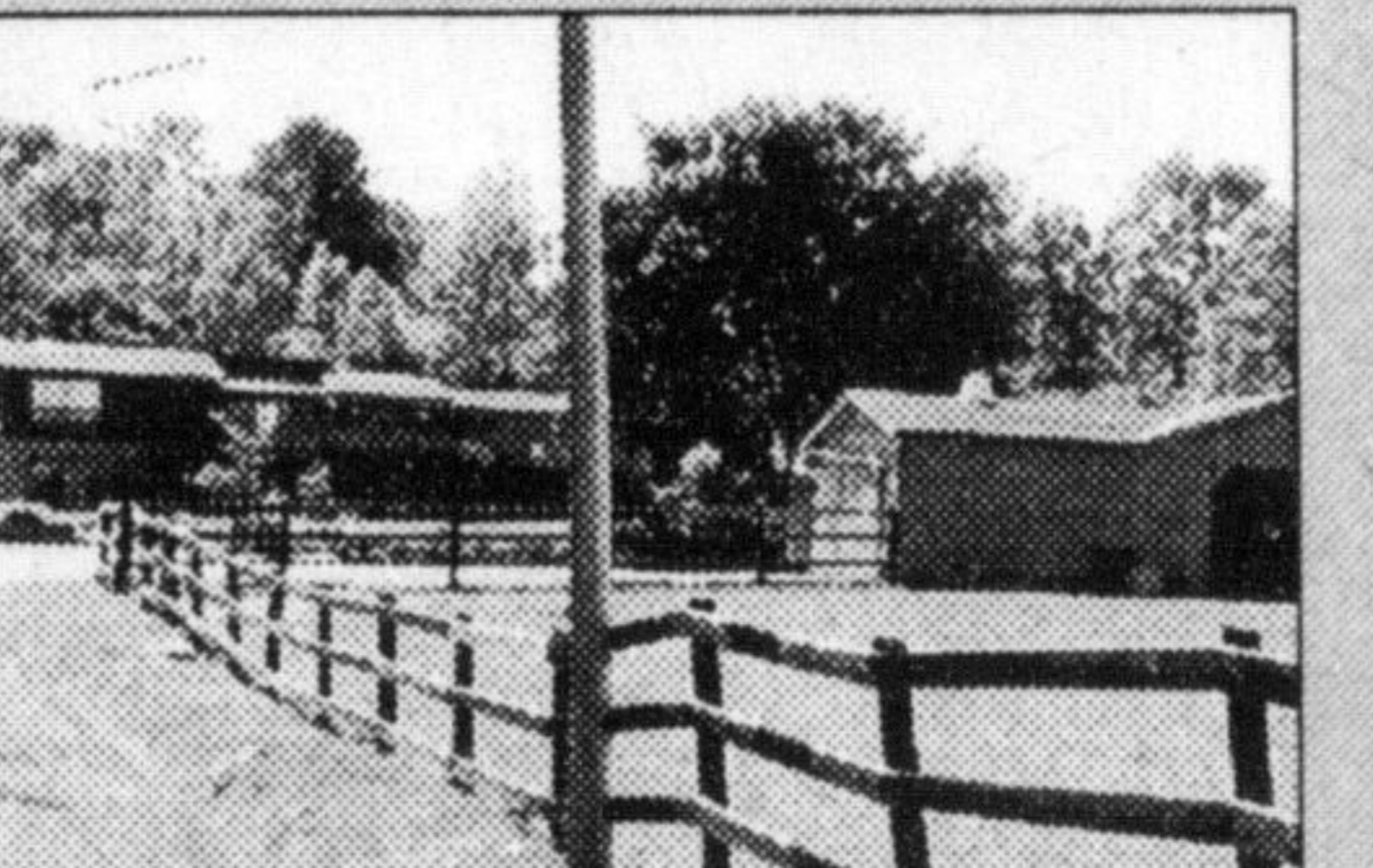
\$319,000

CAMPBELLVILLE BEAUTY
Many \$\$\$'s spent on upgrades. Spotless bungalow on one-third acre wooded lot in heart of Village. New oak kitchen-windows-gas furnace. Spacious room sizes, minimum maintenance and just steps to Village amenities.



REDUCED - \$529,000

PRIVATE HORSE ESTATE
Lovingly created over past 14 years, high quality throughout. Bi-level bungalow set on private 47 acres with lovely views over barn, arena, paddocks and pond. On quiet backroad ten minutes to Milton. Home has vaulted Great Room, screened porch for those summer evenings, 4 bedrooms and much more.



\$699,000 FABULOUS HORSE FARM - CAMPBELLVILLE

Built to highest naturopathic standards, presently racing operation - both residence, barns and land could be adapted to other livestock uses. 4000 sq. ft. residence/office/in-law suite could be duplexed. Three custom barns, miles of Centaur fencing, long tree-lined driveway. Over 48 groomed acres with pasture fields, hayfield, 10 acres of bush with trails through, stream. One of a kind.

COMING SOON

Willow Ridge - An Exciting New 20 Lot Estate On Milton/Halton Hills Border

100 acres of picturesque rolling countryside with an abundance of mature trees and stream running through. Just ten minutes to Hwy 401 - a perfect place to build your dream home and relax in the quiet pastoral setting.
Prices start at \$125,000.
Call for details.

Licensed professional since 1974 - privacy and discretion assured.
Tune into my web site at <http://www.mls.ca/realtors/ataylor>. Email: taylor@globalserve.net