

Tweaking the 911 system should mean better service

By BRAD REAUME
The Champion

Last week municipal council heard a final push is on to get Milton residents who have a Guelph or Rockwood phone exchange into Halton's enhanced 911 system.

The enhanced system provides address information for any telephone number calling into the emergency response system.

According to Shelley Butkans, Bell Canada's manager of Halton's 911 system, there are still a few people who have not responded to requests for address information.

A problem arises, she explained, when an address is supplied to Bell Canada in a non-standard form, such as rural addresses which often include lot and concession numbers. The 911 system is geared to a number, followed by a street name, approach to addresses.

Ms Butkans said that when a call comes in it must be routed somewhere. Without a standard address

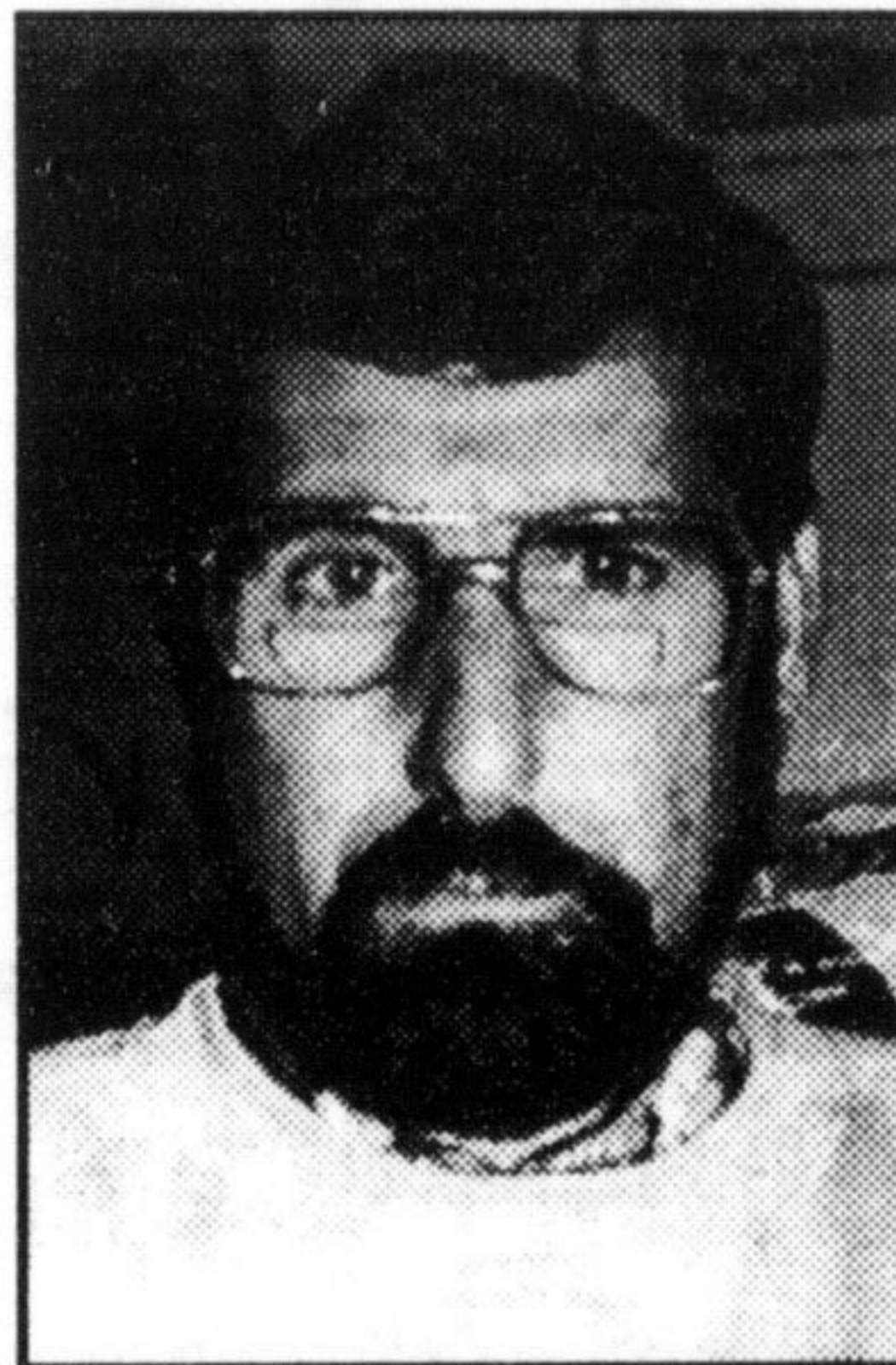
attached to it the computer merely uses the telephone exchange to identify the call and route emergency services.

In this way some Halton residents with Guelph or Rockwood phone exchanges have had emergency responses from those bordering municipalities. In addition those municipalities do not have location information for Halton, which causes a delay. They could transfer calls to Halton emergency services but they have to know the address is in Halton in order to do it.

"At long last it looks like we are getting a hold on this," said rural regional Councillor Barry Lee. Mr. Lee asked that the information be passed on to the Nassagaweya Community Consultation Committee.

Council heard the exchanges in question are 856 and 854, rural ones.

Residents have been contacted through letters and then follow-up phone calls. According to Fire Chief Harold Penson problem numbers have been tested to insure the remedy works.



Barry Lee

Abstract art display in the country

A flamboyant display of abstract art will be featured at Visual Insanity's second annual show the weekend of June 20 and 21.

The group will exhibit its works of abstract, surrealism and impressionist art in 'Outta da city' at 1241 Britannia Rd. E., east of Trafalgar Road, from 10 a.m. to 5 p.m.

Group members Maureen Casteller, Dimitri Ikos, Russell Jodway and Enzo Mazzotta relate their thoughts and emotions through their work.

People who attended last year's show found the works to be "refreshing" and "interesting," Mr.

Jodway said.

"These works demand attention. You'll love it or you'll hate it, but you won't be able to ignore it."

He said each artist focuses on his own individuality and experiences to interpret such things as struggles we incur and the hidden truths within us.

"A wide range of mediums are used as each artist has their own preferences and talents."

The show and sale will also feature a silent auction of art with proceeds going to the Milton District Hospital Foundation.

Artists will be in attendance at the event.

Introducing A Watch As Valuable As Your Father.



Handcrafted in Switzerland. With a limited 25-year warranty. The new Accutron, a watch as valuable as your time.

Many other watches to choose from.

ACCUTRON
BULOVA

Starting at **\$29⁹⁹**

Brancier
JEWELLER - GEMOLOGIST INC.

55 Ontario St. Milton Mall • 876-4367

RICHARDSON

QUALITY PRE-OWNED VEHICLES



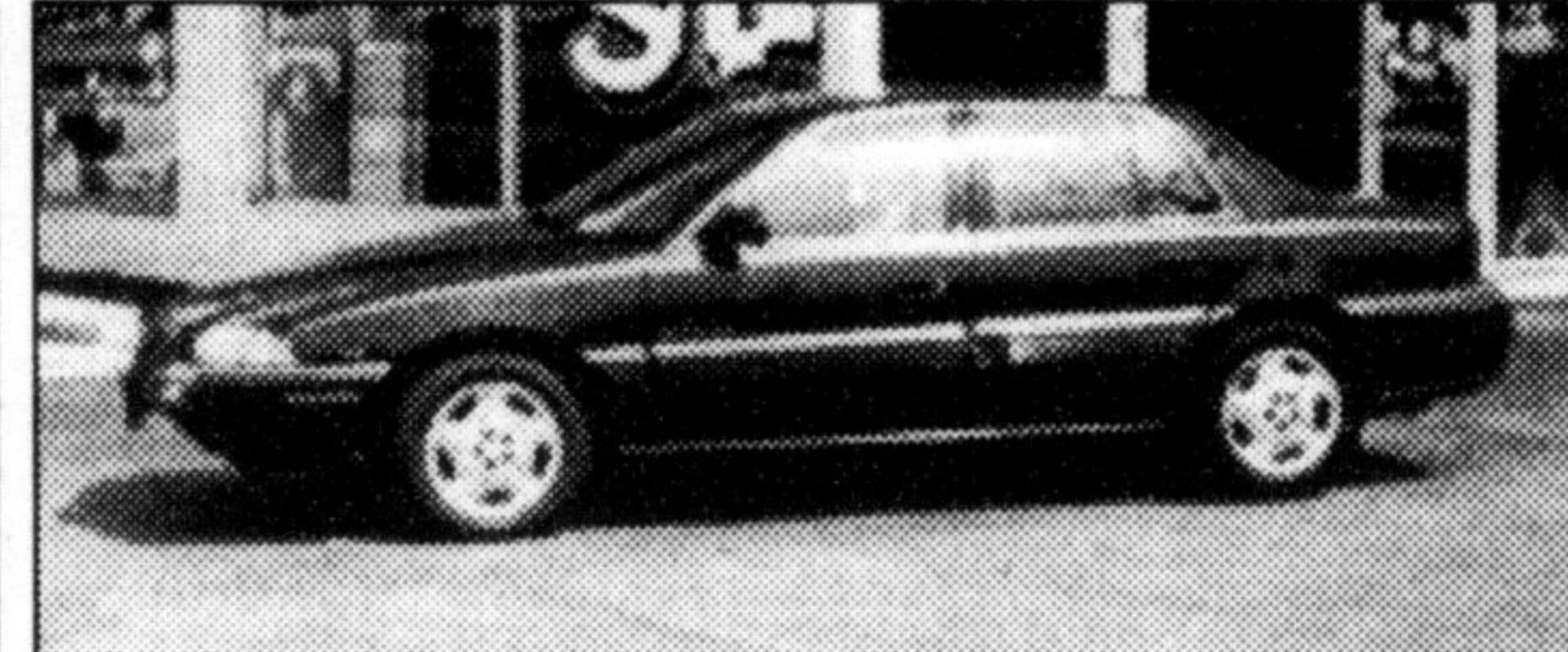
'95 CHEV SILVERADO EXT CAB PICKUP
V8 eng, auto O/D, air cond., P/windows, P/locks, tilt, cruise, AM/FM cassette, box liner. Only 39000 kms on this one owner. Stock #1706

Sale Price... **\$18,995**



'95 BERETTA 2DR
Auto, Air Cond., AM/FM Cassette, Sun Roof. Only 35000 Km on this one owner car. Stock #P1725.

Sale Price... **\$13,995**



'95 PONTIAC GRAND AM 4DR
V6, Auto O/D, Air Cond, AM/FM Cassette. Very Clean. Stock # P1726

Sale Price... **\$13,995**



'94 NISSAN GXE ALTIMA 4DR
5 spd, P/Windows, P/D Locks, Air Cond. Tilt, Cruise, AM/FM Cassette, Sliding Roof. Low Km. Stock #P1662

Sale Price... **\$12,995**



'97 CHEV LUMINA 4 DR
V6 eng., auto O/D, P/D locks, P/windows, tilt, cruise, air cond., AM/FM cassette & alum wheels. Balance of factory warranty. Stock #P1719

Sale Price... **\$18,995**



'97 CUTLASS SUPREME SL 4DR
V6, auto O/D, air cond., P/D locks, P/windows, tilt, cruise, AM/FM cassette, bucket seats, console, alum. wheels. Balance of factory warranty. Stock #P1710

Sale Price... **\$21,995**



'97 OLDS ACHIEVA 4DR
V6, auto O/D, P/locks, P/windows, P/seat, tilt wheel, cruise, air cond., AM/FM cassette, buckets, console & alum. wheels. Balance of factory warranty. Stock #P1720

Sale Price... **\$17,995**



'95 LUMINA APV
V6 eng, auto, air cond., AM/FM cassette, stripe package. Only 57,000 kms. Stock #P1690. 6 month warranty.

Only **\$13,995**

GM Value Pricing
The sensible way to buy a car or truck

SALES HOURS	SERVICE HOURS
Mon.-Thurs. 8am-8pm	Mon.-Fri 8am-5pm
Friday 8am-6pm	Tues 8am-8pm
Saturday 9am-5pm	Saturday 9am-2pm

RICHARDSON
CHEVROLET-OLDSMOBILE 878-2393
HWY. 25 S. AT DERRY RD., MILTON