



GET MOVING IN '98

RE/MAX **Miltowne Realty Corp.**

e-mail: miltowne@globalserve.net

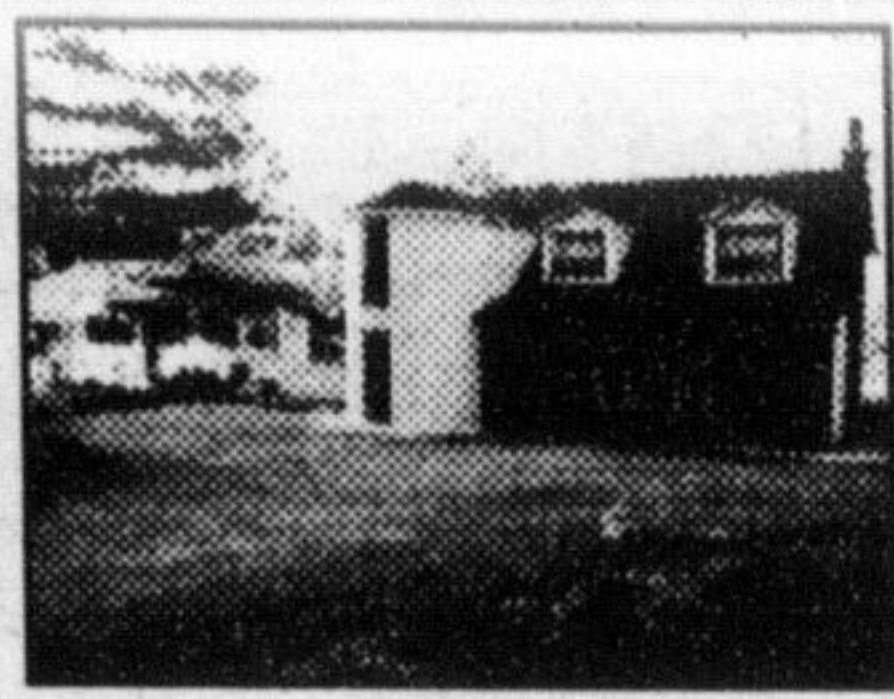
373-7777

22 ONTARIO ST. INDEPENDENTLY OWNED & OPERATED



STEWART HADDON
Associate Broker
RE/MAX MILTOWNE
OFFICE
(905) 878-7777
RES.
(905) 878-3333

EXPERIENCE



QUIET CAMPBELLVILLE
Pond on 10 acres, swimming pool. Large main b/room with fireplace and ensuite and 3 other b/rooms. For your exclusive appointment to view or for more information, please ask for Stewart HADDON, Assoc. Broker 878-7777, res. 878-3333.



SPACIOUS CAMPBELLVILLE
3+ bedrooms, main family room with fireplace, eat-in kitchen and more. For your exclusive appointment to view or for more information, please ask for Stewart HADDON, Assoc. Broker 878-7777, res. 878-3333.



ANNE TAYLOR
Associate Broker
Town & Country
REGISTERED RELOCATION SPECIALIST

854-9833



\$249,900 FARMHOUSE 23+ ACRES
Vintage farmhouse with great curb appeal, clad in pale yellow aluminum and dating from 1906 with two newer additions. Loads of road frontage on two roads just north of Campbellville, half conservation woods and half open with many fruit trees, evergreens, maples and ash. Great condition, five bedrooms, two baths, large country kitchen, o/sized detached garage. A great spot for the naturalist. Loads of parking.



\$319,000 CAMPBELLVILLE BEAUTY
Beautifully upgraded raised bungalow set among towering trees in one of the Village's most popular estates. Minimum maintenance property with u/ground sprinklers. Many \$\$\$ on upgrades - new oak kitchen, new windows, spacious rooms. Come home, relax and enjoy the Village amenities close by.



\$235,000 50 + ACRES
Gorgeous private home/hobby farm site in peaceful agricultural area 10 min. north of 401. Well-kept fields bordered by treelines, bush at back, pond site. Vendor may hold financing.

COMING SOON

Willow Ridge - An Exciting New 20 Lot Estate On Milton/Halton Hills Border

100 acres of picturesque rolling countryside with an abundance of mature trees and stream running through. Just ten minutes to Hwy 401 - a perfect place to build your dream home and relax in the quiet pastoral setting.

Prices start at \$125,000. Call for details.

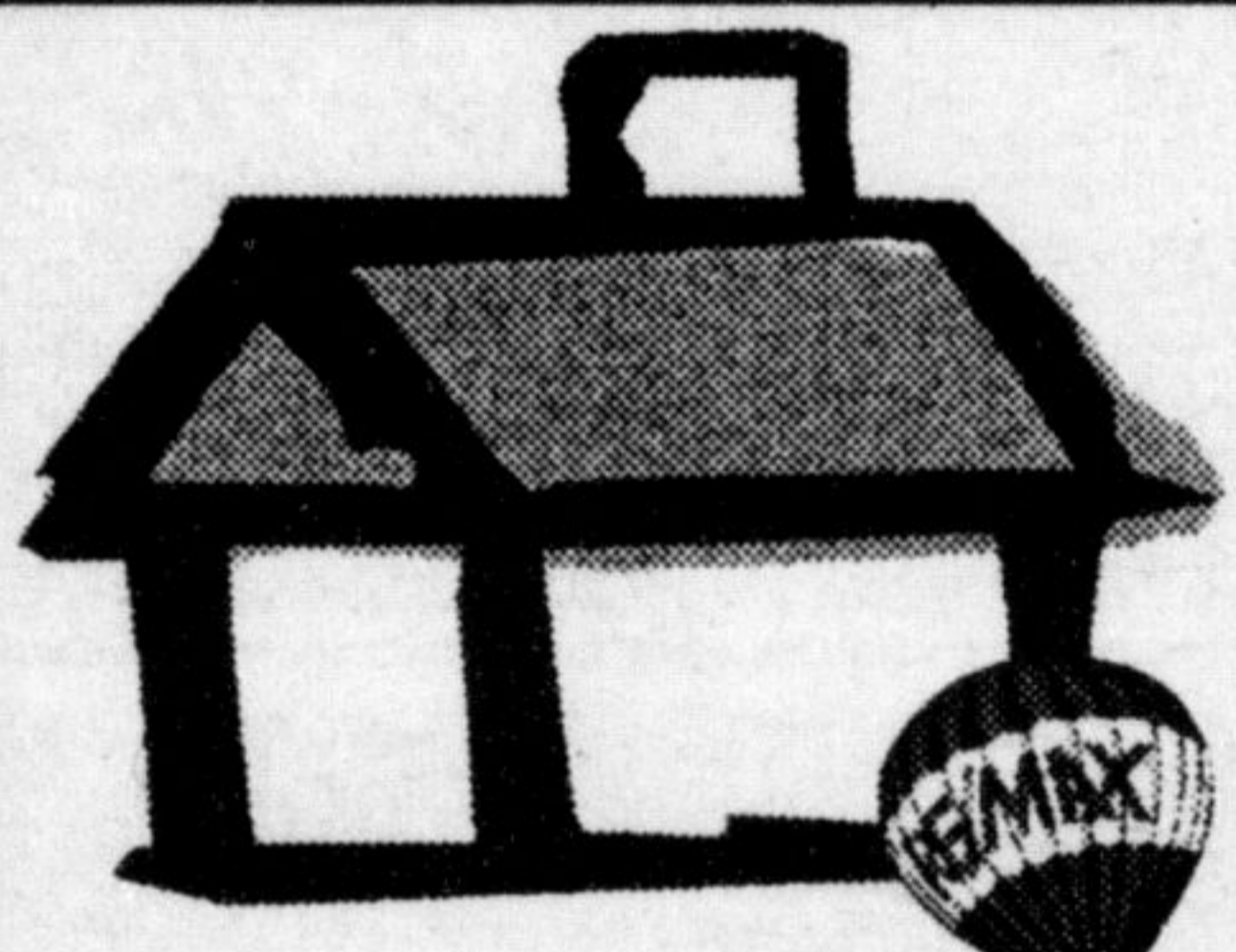
Licensed professional since 1974 - privacy and discretion assured. Tune into my web site at <http://www.mls.ca/realtors/ataylor>. Email: taylor@globalserve.net

THERE IS NO SUBSTITUTE FOR IT. PROFESSIONAL REAL ESTATE SERVICE SINCE 1977

E-MAIL MILTOWNE @ GLOBALSERVE.NET

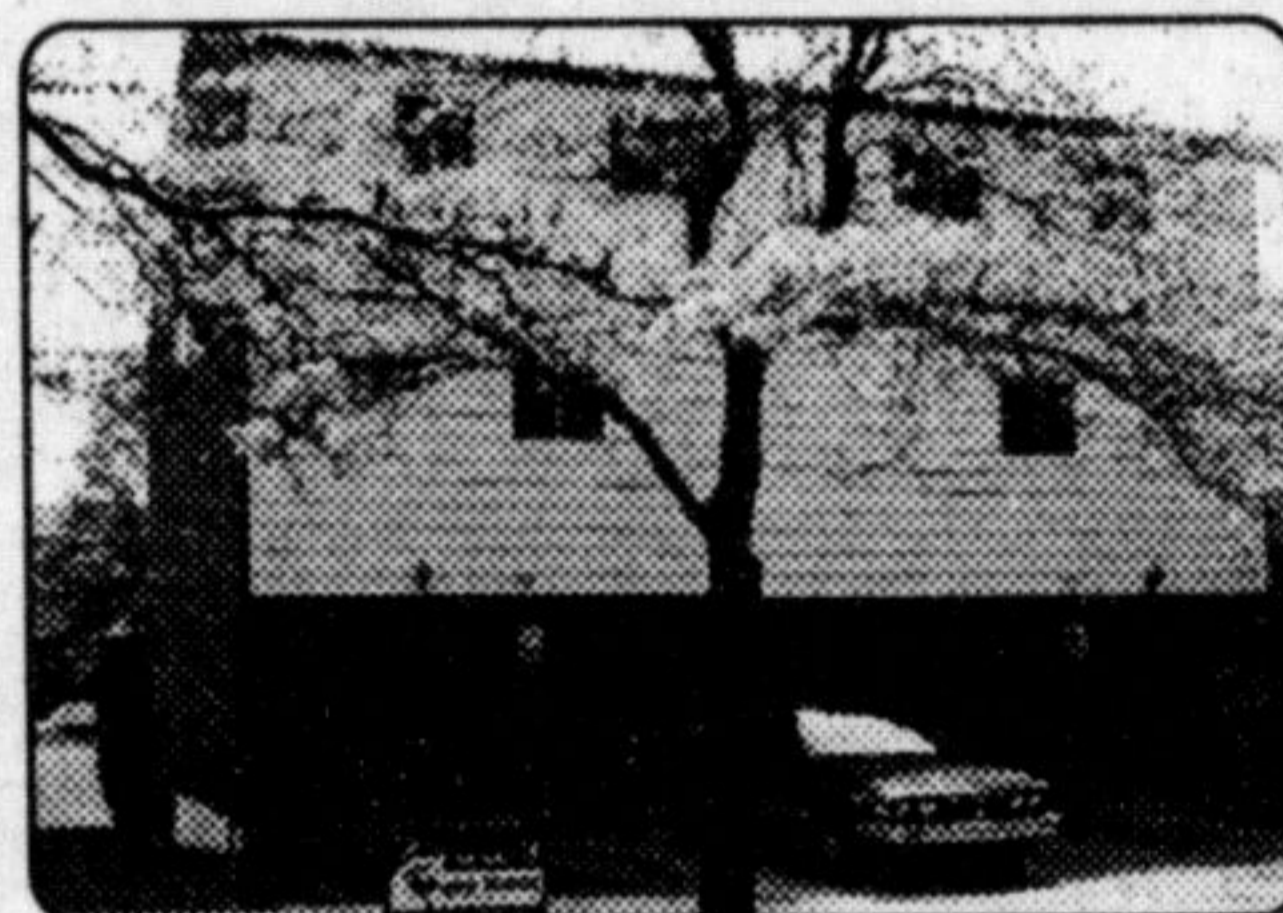


Glen Thomas
Associate Broker
878-7777



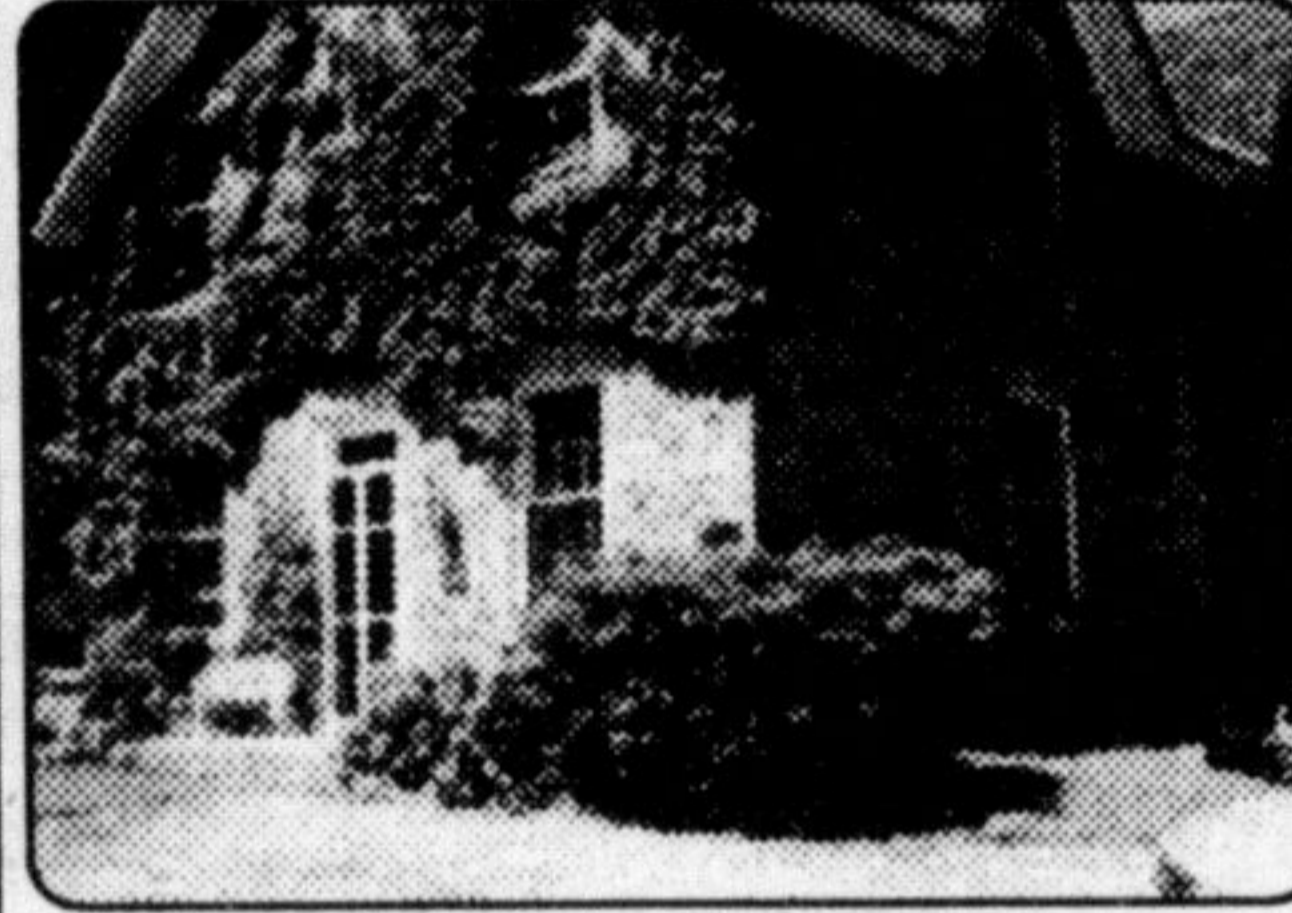
Call for a copy of Glen's 116 page **HOME BUYER'S GUIDE**
Ideal for first time buyers!
878-7777

END UNIT TOWNHOME



Enjoy the convenience of this 3 bedroom end unit townhome. Home is well decorated, newer carpeting throughout, located in Timberlea area of town. \$133,500.

GOTHIC STONE



Be one of the lucky few who own a Heritage award winner. 1876 Gothic schoolhouse. Large principal rooms, fully restored on a large village lot. Call for details. \$425,000.



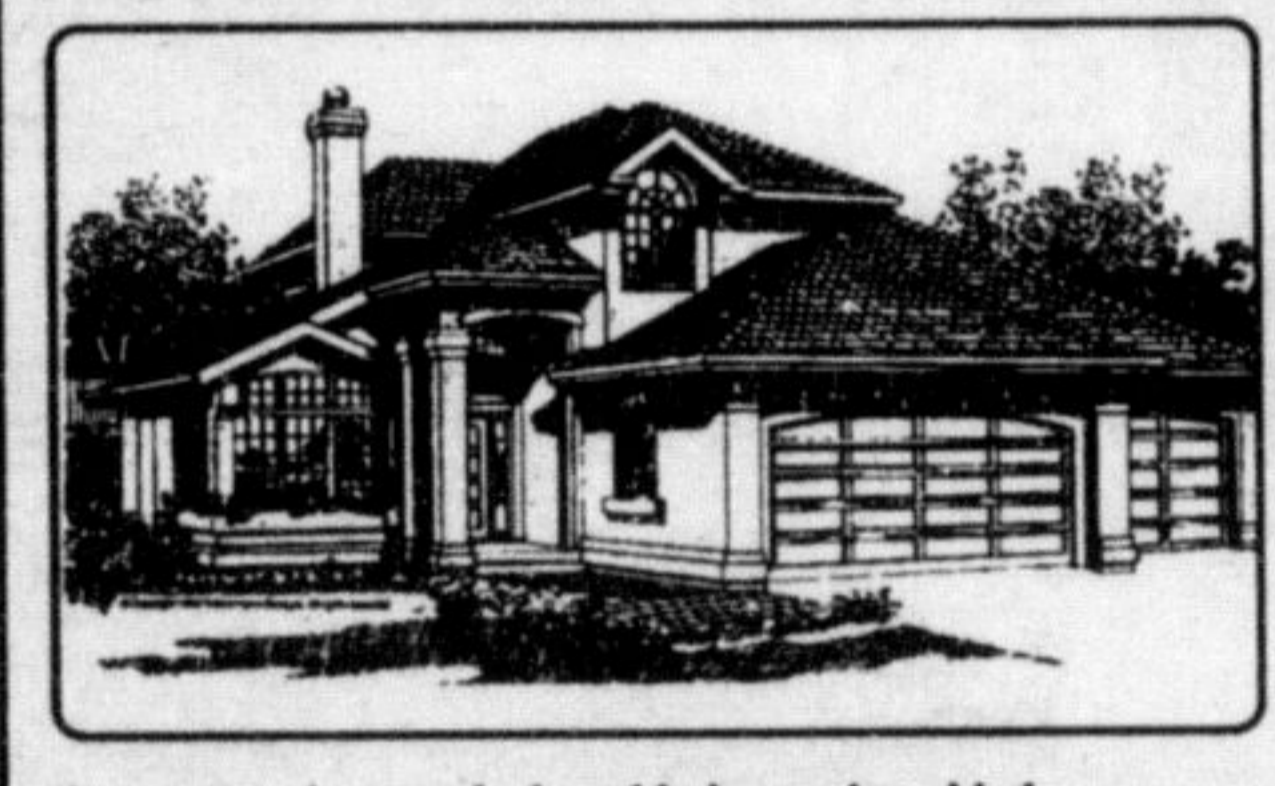
Gary Thomas
Broker/Owner
Res. 875-3700
878-7777

REMEMBER YESTERYEAR



This is a solid 3 bedroom older brick home that has been very well maintained. Features beautiful oak trim throughout, oak flooring, elegant bevelled glass doors, detached double garage and a closed in porch for your enjoyment. Huge double lot. Please call for details on this in-town gem.

NEW HOME TO BE BUILT



Let a local builder build your dream home. We have a 50' x 145' lot ready for this 2,088 sq. ft. beauty. Features 3 bedrooms, vaulted ceilings, large eat-in kitchen and exceptional design. \$279,000. Call for details.

NICE SET-UP



Well maintained in-town sidesplit. Listen to these features. 10' cathedral ceilings w/wood beams, windows replaced ('95), roof ('93), finished rec. room w/gas fireplace. Plus an outstanding 24x26 workshop, 9' pwr door, 100 amp service and overhead furnace. Please call to view. \$189,900.

PALOMINO



Beautiful new subdivision just west of Milton. Lots of new homes under way at Palomino Ranch. Choose bungalows and 2 storeys on roomy 1/2 acre to 1 acre lots. From \$329,000. Call for details.



GLADYS CRANFORD
Associate Broker
878-7777
Res.: 875-3039



NEAT FAMILY HOME - Spacious 3 bdrm. home on quiet street, close to school & park. Eat-in kitchen with walkout to parklike yard. Separate D.R., large L.R. with F.P., upgraded flooring, finished basement, single garage. Asking 199,900.



REDUCED! REDUCED! Home has been completely re-done with 40% carpet and neutral paint. Large home offers 3 big bdrms with 4 pc. ensuite off master. Family room with F.P., eat-in kitchen. Double car garage. Bsmt has in-law potential. Asking \$224,900.

AL VOLPE 878-7777

Sales Representative



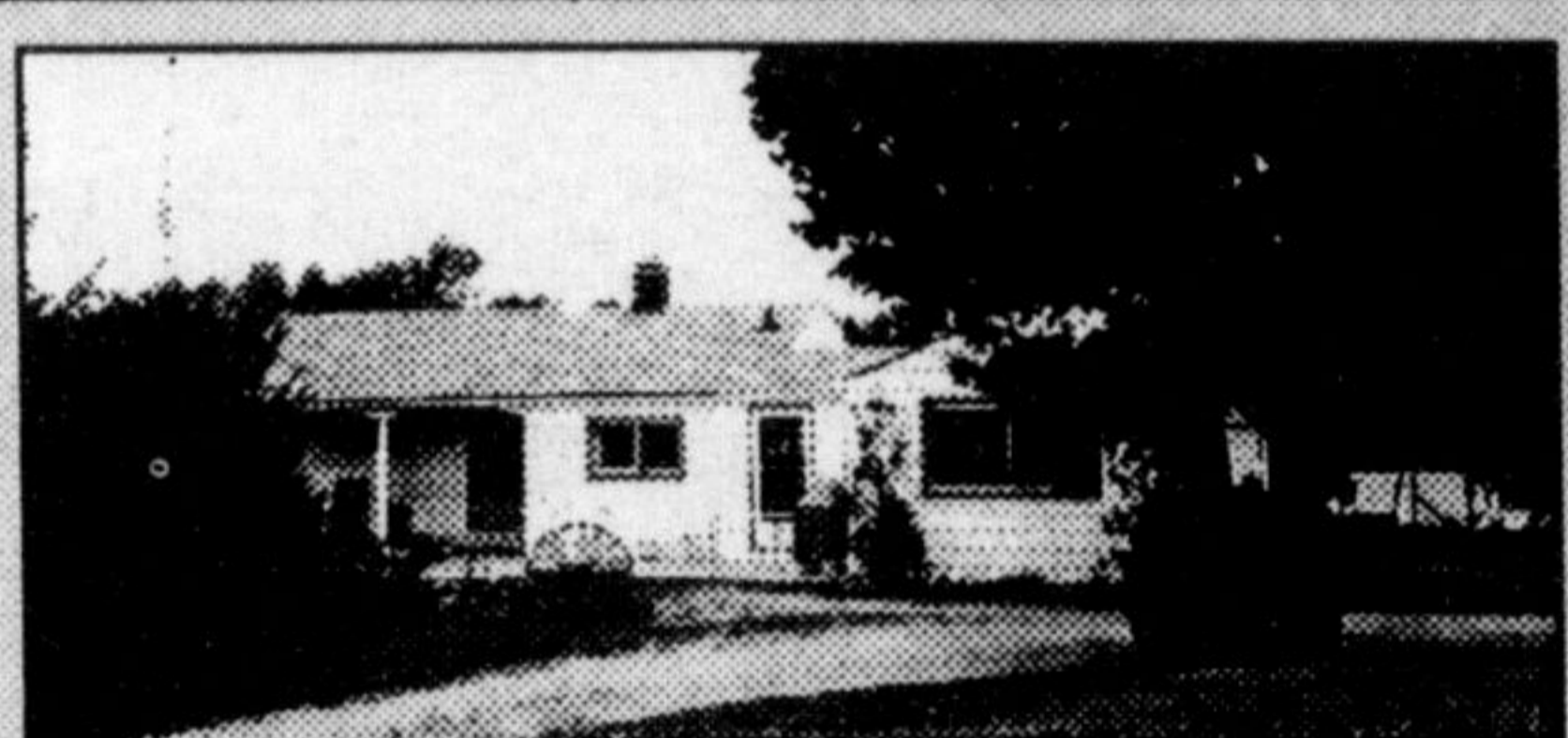
COUNTRY ESTATE \$549,000

Fabulous superior quality custom built country estate approx.

2750 sq.ft. of luxury living. 3 FF 3 bath rm, 6 car gar. 8.5 acres and beautiful view of Escarpment, Toronto and Mount Nemo. All stone built and much more.

WELCOME TO 12229 HIGHWAY 25

Bring all offers. 3 BR bungalow north of 401 and 15 Sd. Rd. Home features full basement and partly fin. Furnace, oil tank insulation and deck, done recent. 7 acres of that feature fertile soil woodland at the back and inground pool that needs some repair. Work shop 900 sq. ft. and much more. Offered at \$259,900.



1200 sq ft Industrial unit for lease close to Go station and Main.

2 Acre building lot mins to Hwy 5 and Burlington. Set high on Mount Nemo. Great view.

1500 sq ft Corn. for lease on Main st. Milton

FIRST LINE, CAMPBELLVILLE \$533,000.



Custom built 3700 sq. ft. two storey home set in 46 acres of apple trees. Home features 5 BR, finished bsmt and 3 car garage. 2 trailer homes on the property that are rented.



KATRINA WALTON
SALES REPRESENTATIVE
Office: 878-7777

NEW LISTING - MOFFAT



Picturesque hamlet setting for this lovingly maintained 4 bedroom brick home. Large principal rooms, great country kitchen with fireplace, walk out to veranda, and 15' x 21' shed. This and more, all situated on a beautifully treed landscaped lot in the village of Moffat. Asking \$279,900

NEW LISTING - CAMPBELLVILLE



Gorgeous stone beauty on 52 acres, 4 bdrms, 3 bathrooms, family room with fireplace, large din. room. Lovely original pine floors, bank barn & drive shed. Beautiful gardens and very private setting. \$495,000



CAROL M. BROOKS
Sales Representative
Hall of Fame
Office: (905) 878-7777
Residence: (905) 875-0067
Toronto Line: 825-4485
<http://www.mls.ca>

CHARMING STONE COTTAGE



Perfect for the renovator. 98 acres, fronting on 4th Line, Campbellville. Close to many conservations. Must be viewed to appreciate. \$449,000

165 ACRES NASSAGAWEYA



Large main house offers 6 bedrooms, separate lr. and dr., huge country kitchen. Large acreage recently surveyed affords you plenty of privacy. 3 car garage, driveshed, pond. Cottage on property could do the in-laws! NEW PRICE \$519,900.00



JEAN SNOWDEN
SALES REP.
878-7777

Don't kick yourself later...

There is lots of room in this spacious home with its 3 bedrooms, comfortable family room with fireplace leading from the eat-in kitchen; large master bedroom with 2 pce ensuite, central air and an added bonus is the giant finished rec room and double garage. Do yourself a favour and call Jean to view \$192,500



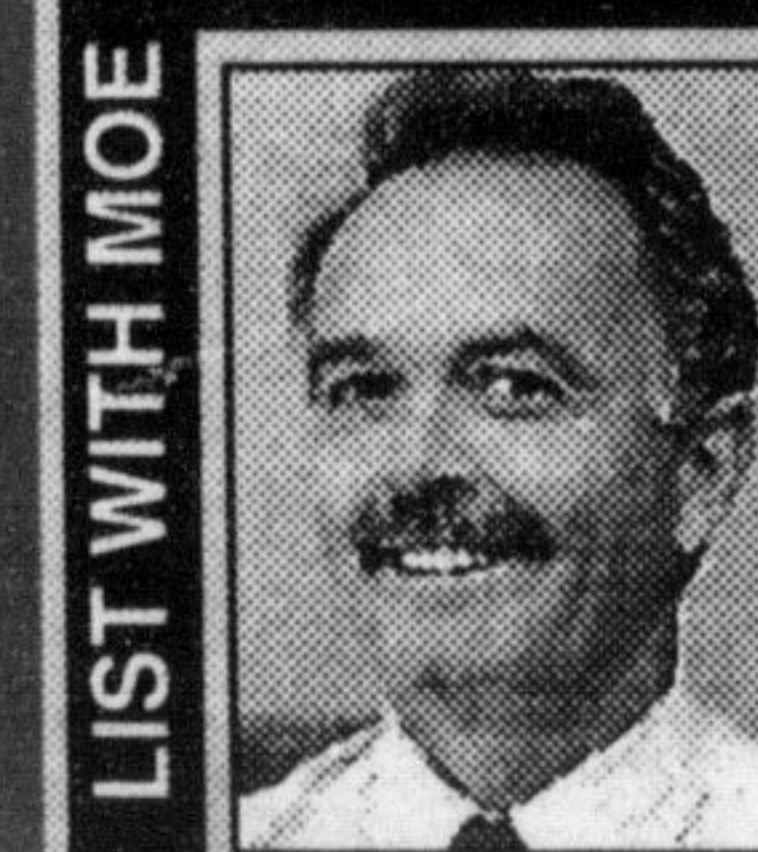
THERE IS MORE THAN MEETS THE EYE HERE...

this ideal family home has a super rec room with a wet bar & stone fireplace, plus a second fireplace in the family room, study or 4th bedroom, big eat-in kitchen and central air conditioning. Great location close to school and park \$214,900.

WANTED

LISTINGS for my clients... Nice townhouse, also 4 bedroom home, pref. with in-law suite. Call Jean for an evaluation.

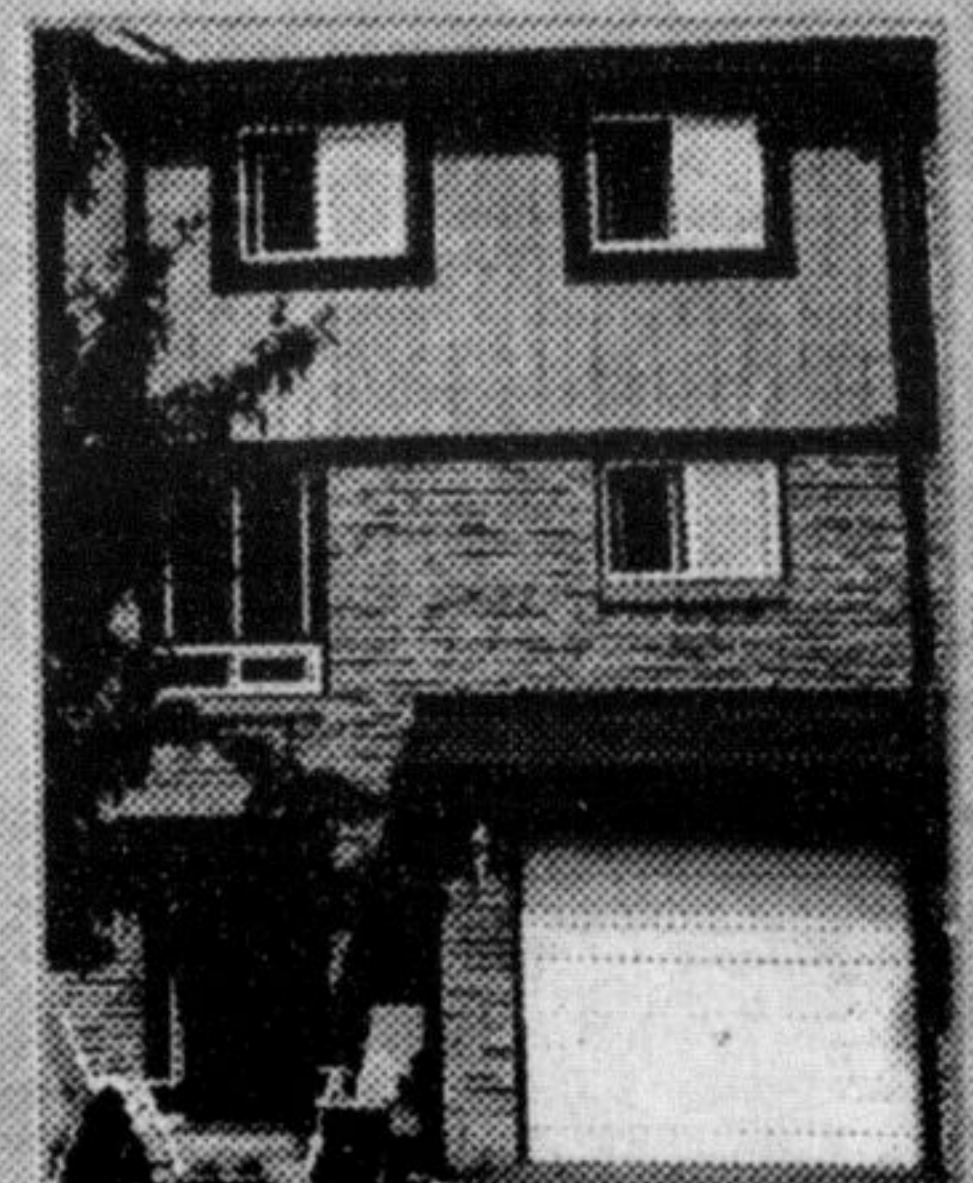
• LIST WITH MOE • SELL WITH MOE • LIST WITH MOE



MOE MILJOUR
OFFICE 878-7777

HALL OF FAME
Assoc. Broker

QUALITY THROUGHOUT. Beautiful townhome shows with pride of ownership. Gas fireplace in family room, remodeled kitchen with oak cupboards and new flooring, new broadloom throughout in '96, oak railings and banisters, all new windows in '96. Tastefully decorated and painted throughout. A real quality unit. \$139,500



• LIST WITH MOE • SELL WITH MOE • LIST WITH MOE