



Deere Season SAVINGS

Introducing the truly affordable Sabre 1438GS Lawn Tractor. Built by John Deere, the Sabre is equipped with these features:

- 13hp OHV engine, 5-speed gear drive
- Welded steel frame
- 18-inch turning radius
- 38-inch cutting width

Every Sabre Lawn Tractor undergoes rigorous testing to ensure it meets John Deere's high standards for quality and dependability. Drop in today and see how easy it is to afford the 1438GS Lawn Tractor.



\$1,599

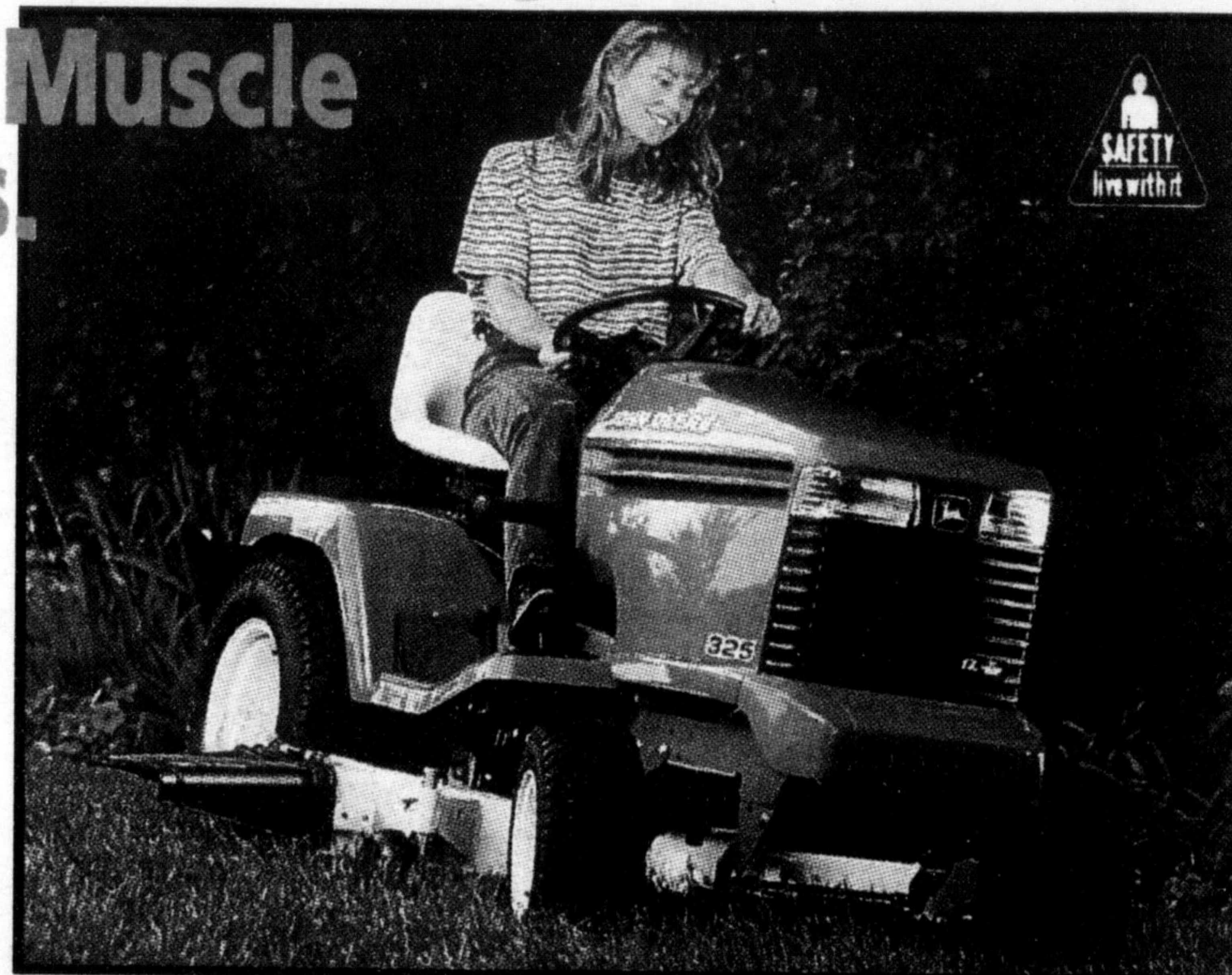
*Based on selling price of \$1,799 less \$363.27 down payment (taxes, setup and delivery charges are extra). Balance of \$1,435.73 to be financed with 36 monthly payments of \$49, totaling \$1,764. Based on 13.9% APR, the full cost of borrowing will be \$328.27. All transactions subject to John Deere Credit approval. Some restrictions may apply.

Lots Of Muscle For Less.

Loaded with John Deere quality and dependability, the 300 Series Lawn and Garden Tractors come with these rugged features:

- 17-hp air-cooled OHV engine (325), 18-hp liquid-cooled OHV engine (345)
- Quik-Tatch implement mounting system
- Convenient hydrostatic Twin Touch™ two-pedal foot control
- 38-, 44-, 48- and 54-inch mower decks available

Drop by and see us today.



\$330 Off

NO INTEREST, NO PAYMENTS FOR 120 DAYS*

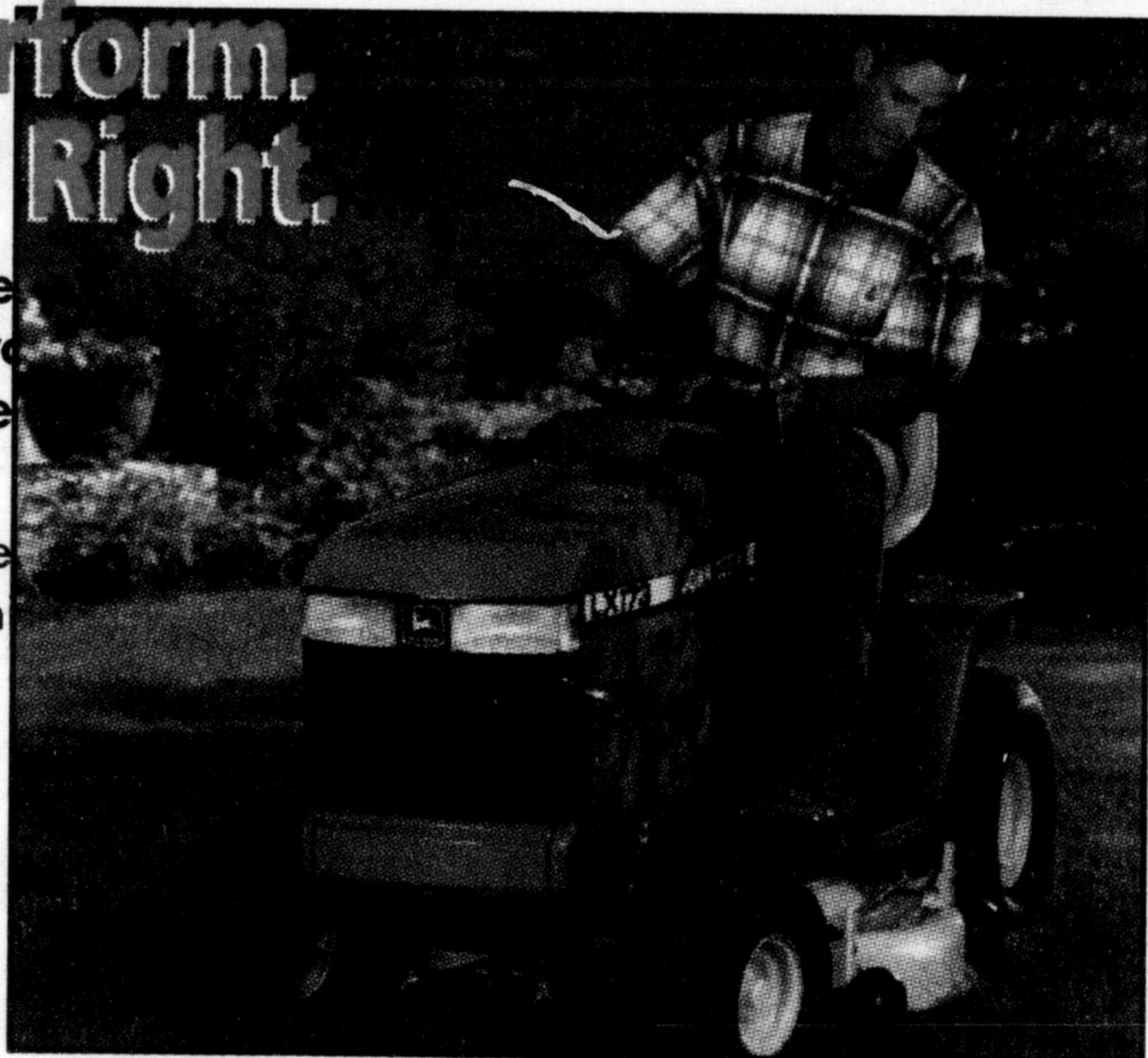
* A minimum 10% down payment is required if waiver of finance charges for 120 days is selected. At this time you may elect to pay the balance owing in full, or continue your financing agreement. All transactions subject to John Deere Credit approval. Some restrictions may apply.

Built To Perform. Priced Just Right.

Put the high quality, dependable Tractor to work around your yard a month. This work-horse has these great features:

- High torque, 15-hp engine
- 5-speed gear-drive transmission
- Welded steel frame
- 20-inch turning radius
- 38-inch mower

Drop in and see us today to great values.



\$99 per month*

* Based on selling price of \$3,875 less \$752.21 down payment (taxes, setup and delivery charges are extra). Balance of \$3,117.79 to be financed with 36 monthly payments of \$99, totalling \$3,564. Based on 8.9% APR the full cost of borrowing will be \$446.21. All transactions subject to John Deere Credit approval. Some restrictions may apply.

Big Tractor Features Without The Big Tractor Price

The new John Deere LT133 Lawn Tractor is superbly engineered. Check out these big tractor features:

- Powerful 13-hp Kohler OHV engine
- Cast-iron cylinder liner and full pressure lubrication
- Heavy-duty, 80-pound welded steel frame
- 5-speed, shift-on-the-go transmission

For years of dependable performance, and more value for your money, come in and let us show you the LT133 today!



\$2,549

* A minimum 10% down payment is required if waiver of finance charges for 90 days is selected. At this time you may elect to pay the balance owing in full, or continue your financing agreement. All transactions subject to John Deere Credit approval. Some restrictions may apply.

NO INTEREST, NO PAYMENTS FOR 90 DAYS*

HALTON GROUNDS CARE EQUIPMENT

1589 Steeles Avenue East, Milton 878-2121

Sale Ends **July 6, 1998.**



NOTHING RUNS LIKE A DEERE®