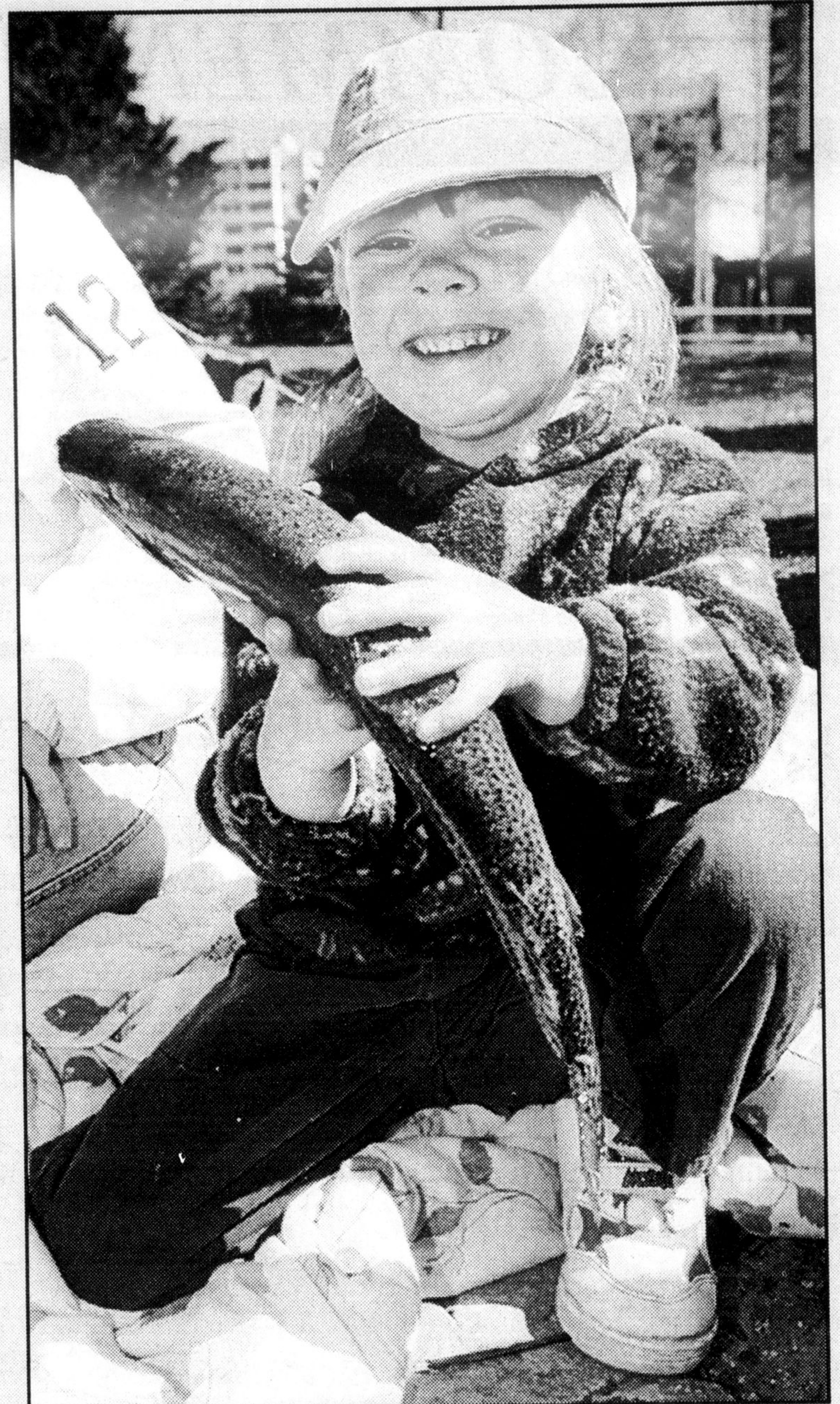




Photos by GRAHAM PAINE



## Something's fishy

Three-year-old Riley Marek was definitely one of the youngest anglers at the annual Mill Pond Fishing Derby, but far from the least experienced. Here she gets a few last minute pointers from mother Jodi before reeling in one of the first catches of the day.

# Richardson's...

# ROCK THE NATION

## CHEVY TRUCK SALE



'98 CHEVY THUNDER REGULAR CAB

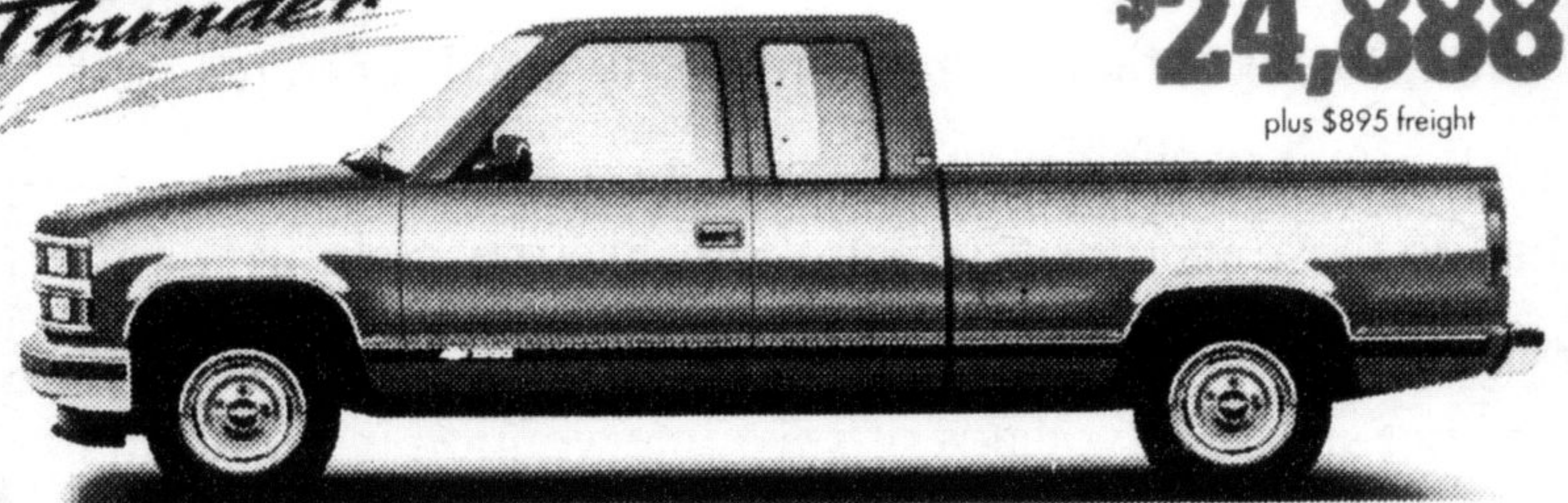
'98 CHEVY THUNDER EXTENDED CAB

*CHEVY Thunder*



LEASE OR FINANCE  
Only  
**1.9%**  
OAC

*CHEVY Thunder*



PURCHASE  
**\$24,888†**  
plus \$895 freight

FOR A FEW DOLLARS MORE A MONTH YOU AND YOUR BUDDIES IN THE BACK SEAT CAN GET A WHOLE LOT MORE OF A GOOD THING.

**SMART LEASE**

/24 months/  
\$2,040 down  
payment/\$300  
security deposit/  
\$895 freight

**\$188\***

INCLUDES NO-CHARGE BOXLINER, 200 HP Vortec 4300 V6 engine, automatic transmission with overdrive, 4-wheel ABS, dual front air bags, 8' pickup box, cloth seats, AM/FM stereo, chrome plated wheels, deluxe chrome grille.

**PURCHASE**

**\$20,398†**  
plus \$895 freight

**SMART LEASE**

/24 months/  
\$1,375 down  
payment/\$300 security  
deposit/\$895 freight

**\$228\***

INCLUDES NO-CHARGE BOXLINER, 230 HP Vortec 5000 V8 engine, automatic transmission with overdrive, 4-wheel ABS, dual front air bags, air conditioning, AM/FM stereo with cassette, tilt/cruise, cloth seats, chrome plated wheels, deluxe chrome grille, deep tinted glass, carpeted floor mats, the most truck for the price.

# RICHARDSON

## CHEVROLET-OLDSMOBILE

HWY. 25 S. AT DERRY RD., MILTON

\* While Quantities Last  
† See Dealer for details

SALES HOURS		SERVICE HOURS	
Mon.-Thurs.	9am-6pm	Mon.-Fri.	8am-5pm
Friday	8am-6pm	Tues.	8am-6pm
Saturday	9am-5pm	Saturday	9am-2pm

# 878-2393