



GET MOVING IN '98

RE/MAX **Miltowne Realty Corp.**

373-7777



22 ONTARIO ST. S.
INDEPENDENTLY OWNED & OPERATED

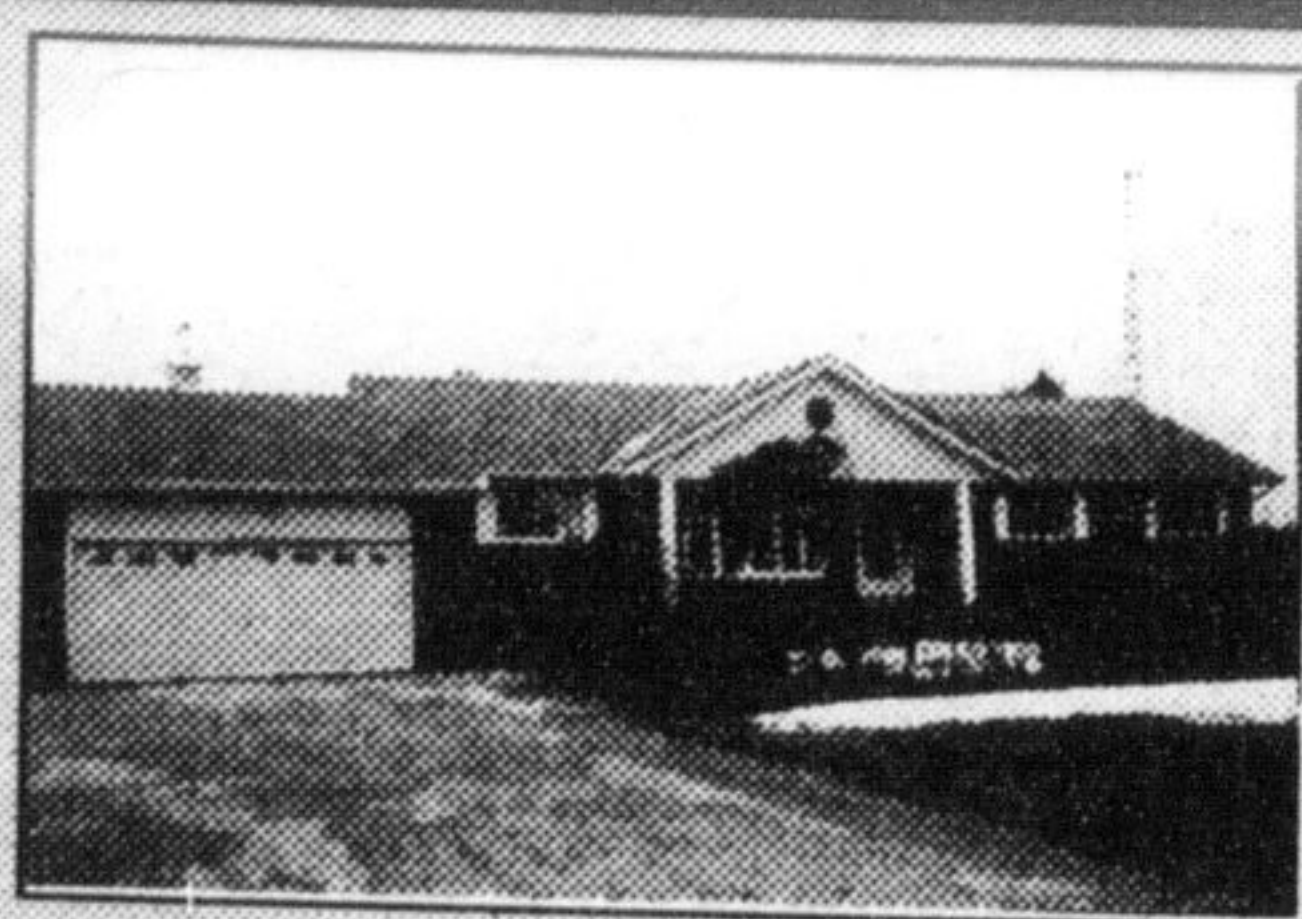
e-mail: miltowne@globalserve.net



BETTY INGLE

HALL OF FAME
Sales Representative
Registered Relocation Specialist

Office: 878-7777
Tor. Line: 825-4485



This lovely bungalow, beautifully landscaped offers living room with large bay window, 3+2 bedrooms, huge eat-in kitchen with walkout to garden/pond. Many upgrades including oversized work shop. Please call Betty for your appointment today. \$324,900.



KEVIN HOWDEN
Sales Representative

Office: 878-7777
Toronto: 825-4485
Res.: 854-2973



IT'S ALL HERE!

This charming 1918 all brick residence on a large lot offers it all. Potential business use, call it home or both. Features separate upper level living quarters with own entrance. Displays warmth & elegance with its many original features. Magnificent oak staircase, pine floors, pocket doors & more. Roof reshingled '92, new furnace & C/A '92 & 3 car garage with loft. A must to see \$399,900.



INDOOR ARENA

Great location - just minutes to Mohawk & Hwy. 401. Approx. 36 acre farm on rolling landscape. Metal barn with 8 stalls (room for 11) with 65' x 100' indoor arena combined. Stream flowing through property with multiple ponds, plus a 4 bedroom bungalow sitting well back from the road from winding tree-lined drive. Asking \$389,000.



VILLAGE PARC CONDO

Move right in to this bright well kept two bedroom unit complete with a very large master bedroom with ensuite bath, eat in kitchen, spacious living room with additional 3 piece bath. Shows well. Come have a look. Asking \$164,900.

RE/MAX * REMAX * REMAX * REMAX

SHERYL GRAY
Sales Representative
Office: 878-7777
Res. 875-1121
Tor. Line 825-4485
Serving Milton since 1984.



BYE BYE LANDLORD

Call today for your personal inspection of this newly listed totally upgraded townhouse. Only \$122,900. All new windows, roof, upgraded broadloom, flooring throughout freshly decorated, call Sheryl at 878-7777 for further details.

RE/MAX * REMAX * REMAX * REMAX

RE/MAX FOR SALE • RE/MAX FOR SALE •

MOE MILJOUR
OFFICE 878-7777
HALL OF FAME
Assoc. Broker

JUST SOLD



TERRIFIC FAMILY HOME

Something for everyone in this four bedroom side split, remodeled white kitchen, main floor family rm with walk-out and brick fireplace, extra high ceiling in the large finished recreation room, new broadloom throughout, central air, five appliances, plus a large living room-dining room area. This could be the one. \$219,000.

RE/MAX FOR SALE • RE/MAX FOR SALE •



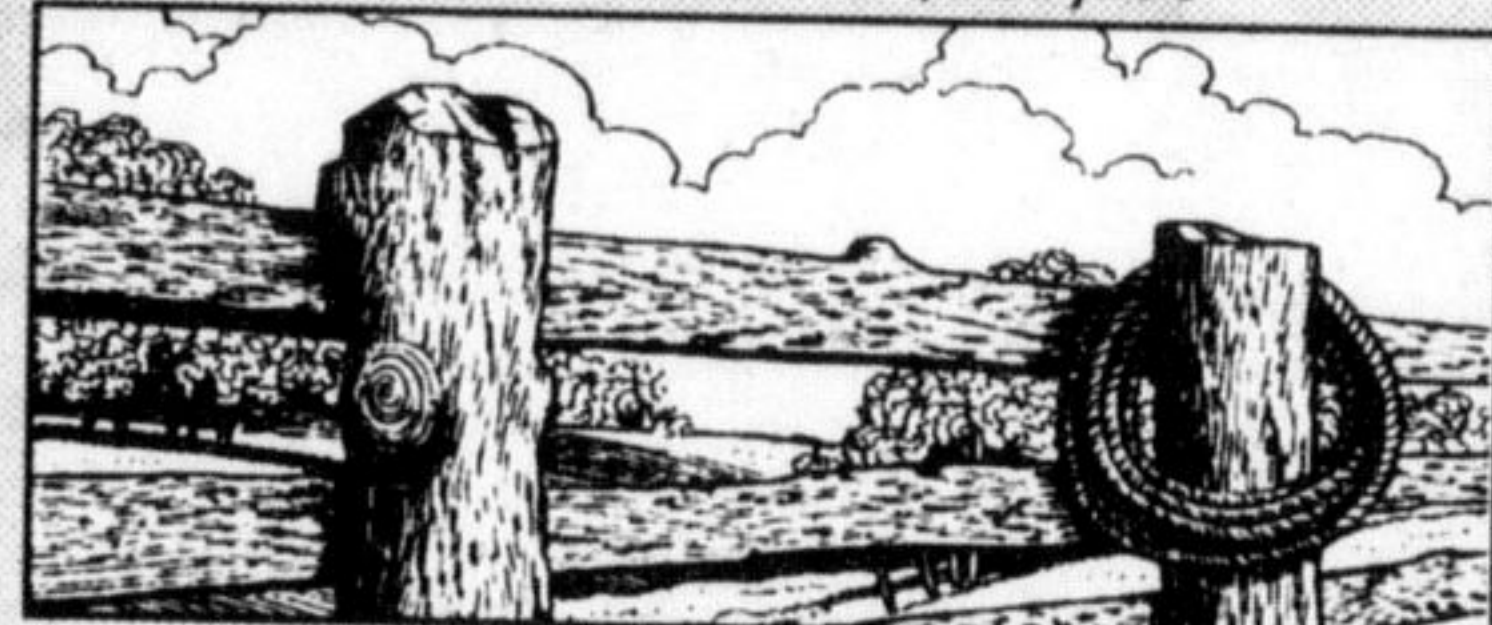
MIKE MORGAN
Associate Broker

Office: 878-7777
Res.: 878-8093



Classic 1850 built two storey, five bedroom home preserved to reflect the era with a Nanny's quarters addition (1989) to total approx. 5,000 sq.ft. The centre hall plan, the high ceilings, wood floors and extensive trim reveal the grace of yesteryear. Located on 1.4 scenic acres between Milton and Oakville.

To view call Mike\$393,900



Over 3 acres of natural treed setting nestled into the Niagara Escarpment. Picturesque building lot located just north of town. Carve your perfect homesite into the unique natural landscape. Call Mike.....\$99,900

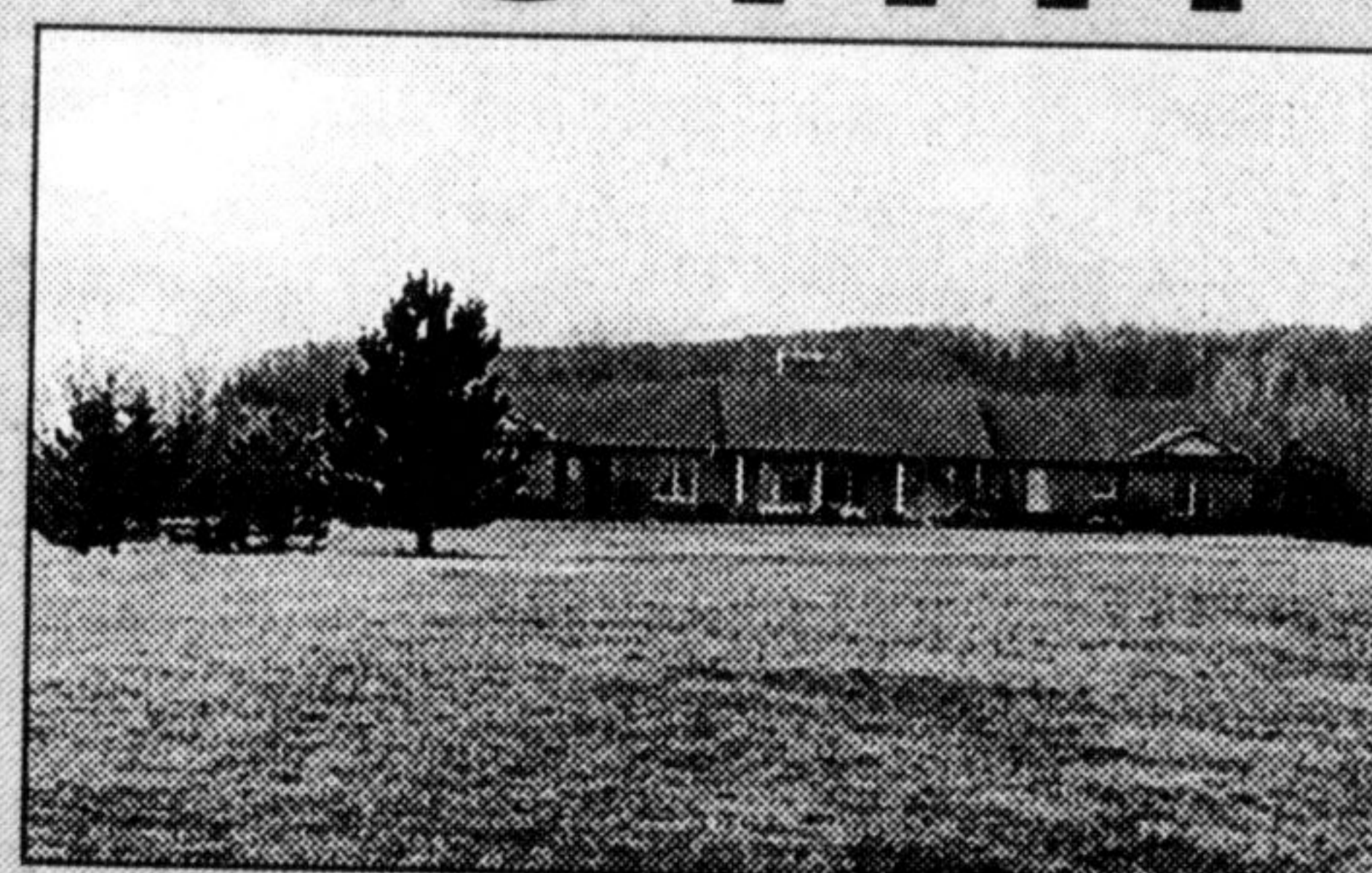


Located just minutes south of Milton this immaculate all-brick bungalow on 1 acre has been meticulously cared for and features: generous sized living/dining room with propane fireplace, gorgeous and spacious cherry kitchen, 3 bedrooms, sun room, vinyl windows, recent oil furnace, central air, central vacuum, double garage with insulated doors and paved drive. For further info on this fine home please call Mike. Asking \$279,900.



A fabulous renovation and addition has created a stunning modern open concept home ideal for this picturesque lot. Huge European style eat-in kitchen complete with island overlooks the family room with bar, wood stove and French doors to deck. Quality ceramics, broadloom and granite floors, scenic treed lot. Truly unique. Call Mike \$299,900

AL VOLPE
Sales Representative
878-7777



COUNTRY ESTATE \$549,000
Fabulous superior quality custom built country estate approx. 2750 sq.ft. of luxury living. 3 FF 3 bath rm, 6 car gar. 8.5 acres and beautiful view of Escarpment, Toronto and Mount Nemo. All stone built and much more.



Teri Lynn Hilson

Sales Representative
878-7777
Toronto: 825-4485
Res: 876-4139



BUNGALOW ANYONE? This 3 bedroom bungalow is located close to schools & amenities. Shingles, eaves, fascia & soffits all replaced in '96, new front door & insulated garage door. Central vac & air. Basement has kitchen & 2 bedrooms suitable for inlaws. Teri-Lynn Hilson.



Great opportunity to operate a business from this building. It is close to downtown, C-1 zoning, completely fenced compound. Call me today for more details. Teri-Lynn Hilson.



LINDSAY J. McLAREN

Sales Representative
878-7777 Office
(Res.) 854-2451
(Tor. Line) 825-4485



IDEAL LOCATION

Located just minutes south of Milton this immaculate all-brick bungalow on 1 acre has been meticulously cared for and features: generous sized living/dining room with propane fireplace, gorgeous and spacious cherry kitchen, 3 bedrooms, sun room, vinyl windows, recent oil furnace, central air, central vacuum, double garage with insulated doors and paved drive. For further info on this fine home please call Lindsay J. McLaren. Asking \$279,900.



EXCLUSIVE GLENDA JANE

Campbellville nestled away on 6 acre wooded lot overlooks large pond and features formal LR/DR, Hollywood style kitchen w/o to deck, main floor family room with FP & w/o to deck, 3+1 bedrooms, 2 1/2 baths, games room, sauna, rec room with FP, central air and central vac, hi-eff. gas heat and professionally landscaped. For your viewing of this fine home please call Lindsay J. McLaren. Asking \$329,900.



GREAT FAMILY LOCATION

Located on quiet crescent in mature Milton, this three-bedroom bungalow features hardwood floors, oak kitchen, a separate in-law one-bedroom apartment in basement and in-ground pool. For further details please call Lindsay J. McLaren. .Reduced \$179,900.



EQUESTRIAN CENTRE

Ideally located close to Campbellville with renovated 3-bedroom Victorian farmhouse, this Equestrian Centre on 29 acres features 28 box stalls, 60'x120' enclosed arena with viewing lounge, older bank barn, utility shed, pond and fenced paddocks. Super situation for those looking for an income producing horse farm. For further details please call Lindsay J. McLaren. Value Priced at \$469,900



VICTORIAN ELEGANCE

Located in a most prestigious area of Milton this distinctive 2 1/2 storey brick home has been restored and updated with modern conveniences and now features LRT w/gas fireplace, formal dining area, updated kitchen opens to large deck overlooking park, 3 bedrooms, MBR w/Jacuzzi ensuite and dressing room, potential for further development on third floor, central air and central vac, double car garage and much more. Please contact Lindsay J. McLaren for further details. Asking \$454,900.



Stewart Haddon
Associate Broker

(905) 878-3333
(905) 878-7777



UNIQUE

Is this what you are looking for? Swimming pool, natural pond, 10.9 acres with trees and privacy. Four bedrooms, main bedroom 21'9"x19'. Great room 25'x23'. Asking only \$485,000. For your exclusive appointment to view or for more information Please Ask for Stewart HADDON, Assoc. Broker 878-7777, Res. 878-3333.



SPACIOUS SIDE SPLIT

Family room with fireplace, large "L" shaped live-dining room, well appointed EAT in kitchen, would suit a large family, asking a modest \$227,000. For your exclusive appointment to view or for more information Please Ask for Stewart HADDON, Assoc. Broker 878-7777, Res. 878-3333.



SHARON KERLEY

Sales Representative
Registered Relocation Specialist
Office 878-7777
Tor. Line 825-4485



DON'T MISS This immaculate 3 bedroom home, tastefully decorated throughout, featuring beautiful eat-in kitchen, nicely finished basement with 2pc washroom, many recent upgrades including windows, carpet, flooring, furnace and air conditioning, french doors and more. Located on a quiet crescent and handy to all amenities. Call Sharon for more information. \$189,900.