

# GEORGETOWN TOYOTA is Doing It Right



'98 Tercel CE  
lease for

**\$178\*** plus tax



per month for 48 months  
freight & P.D.E. included

**Only \$900 down.**



- 5 Speed Manual Transmission
- AM/FM Cassette Stereo
- 60/40 Fold Down Rear Seat
- Intermittent Wipers

Or choose automatic for **\$188\*** per month 48 months with \$900 down

Or get **3.8%** no limit financing for up to 60 months on Tercel.†

'98 Corolla VE  
lease for

**\$228\*** plus tax

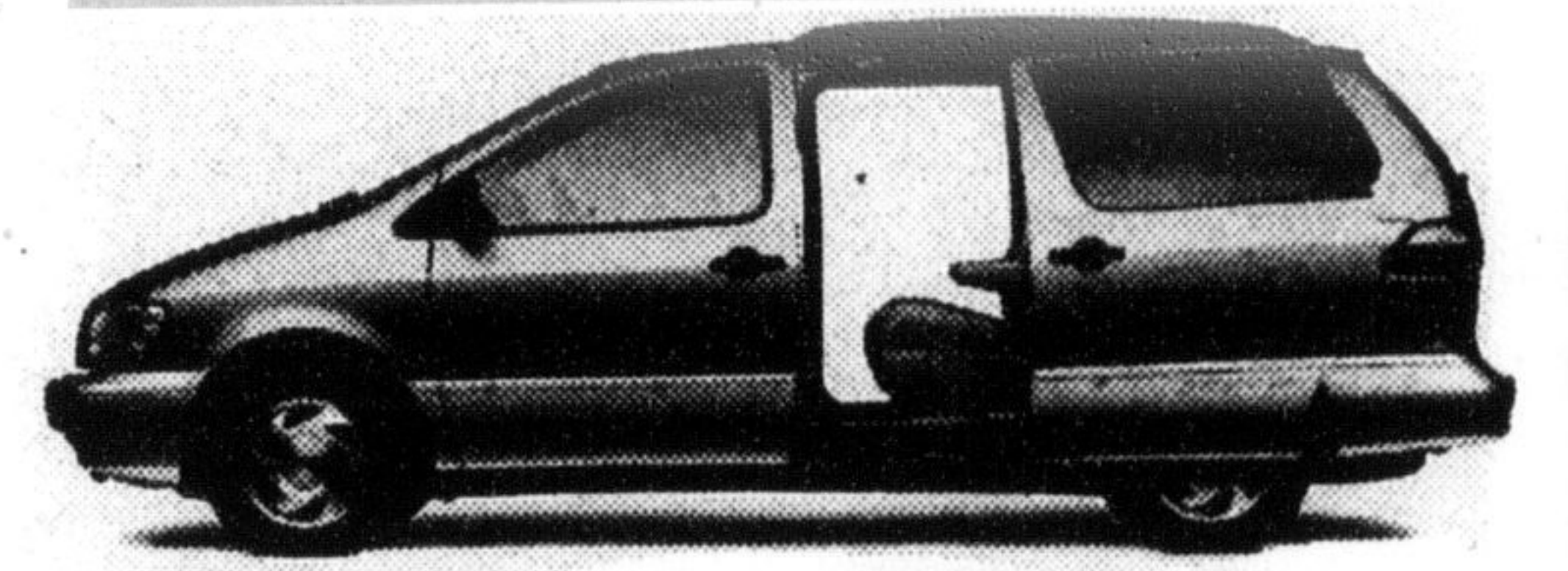


per month for 48 months  
freight & P.D.E. included

**Only \$1950 down.**

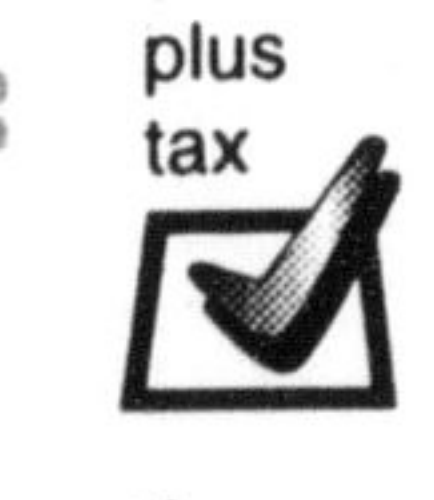


- Air Conditioning
- Automatic Transmission
- AM/FM Cassette Stereo
- Dual Airbags
- 1.8 litre DOHC 120 H.P. Engine



'98 Sienna CE 4 Door  
lease for

**\$348\*** plus tax



per month for 48 months  
freight & P.D.E. included

**Only \$3500 down.**

- Dual Air Conditioning
- Automatic Transmission
- Dual Airbags
- Cruise Control
- Antilock Braking System
- Power Windows & Locks
- AM/FM Cassette Stereo
- 7 Passenger Seating
- 194 H.P. DOHC V6 Engine
- Dual Sliding Doors

Or get **4.8%** no limit financing for up to 60 months on RAV4, Camry, and Sienna CE.†

'98 RAV 4  
lease for

**\$298\*** plus tax



per month for 48 months  
freight & P.D.E. included

**Only \$1500 down.**



- Dual Airbags
- 5 Speed Manual Transmission
- Intermittent Wipers
- Full Time 4-Wheel Drive
- 2.0 litre 16 valve EFI Engine
- AM/FM Cassette Stereo

'98 Camry LE  
lease for

**\$298\*** plus tax



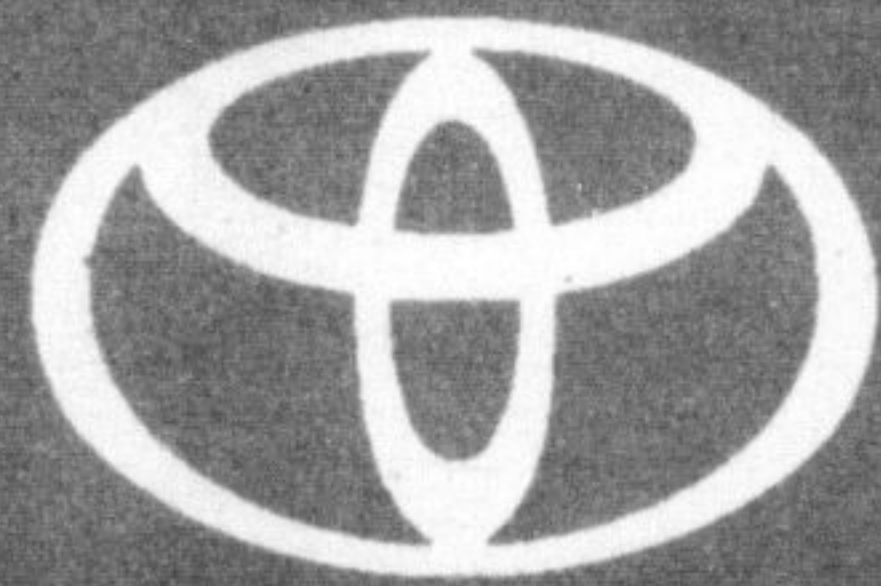
per month for 48 months  
freight & P.D.E. included

**Only \$2500 down.**



- Air Conditioning
- Automatic Transmission
- Antilock Braking System
- Power Windows and Door Locks
- Power Heated Mirrors
- AM/FM Cassette Stereo
- Cruise Control

\* Based on a 48 mos. walkaway lease, based on 96,000 kms. Additional km charge of \$0.07 if applicable on the Tercel CE and Corolla VE OR an additional km charge of \$0.10 if applicable on the RAV4, Camry LE and Sienna CE

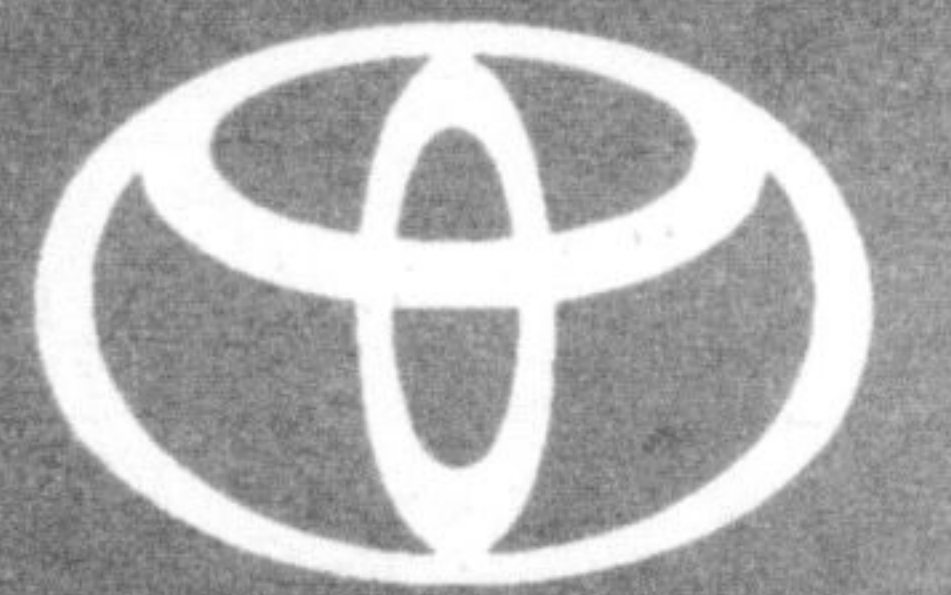


## GEORGETOWN TOYOTA SALES

15 MOUNTAINVIEW RD. N., - GEORGETOWN

877-2296 Tor. 874-4276

WEBSITE at [www.haltonhills.com/toyota](http://www.haltonhills.com/toyota) or E-MAIL at [toyota@aztec-net.com](mailto:toyota@aztec-net.com)



# Freshness GUARANTEED

# Get 1 FREE (175g)

when you purchase any two packages of 175g Maple Leaf brand sliced meats.

**To the Dealer:** Maple Leaf Meats will reimburse the face value of coupon plus our specified handling fee providing you accept it from your customer on the purchase of any two 175g Maple Leaf brand sliced meats product. Other applications may constitute fraud. Failure to send in, on request, evidence that sufficient stock was purchased in the previous 90 days to cover coupons presented will void coupons. Coupons submitted become our property. Reimbursement will be made only to retail distributors who redeem coupons. GTS credit is included in coupon value where applicable. For redemption mail to: Maple Leaf Meats, P.O. Box 3000, Saint John, New Brunswick, E2L 4L3. Limit one coupon per purchase. Coupon expires: April 30, 1998.



# SAVE 50¢ NOW

when you purchase any 450g package of Maple Leaf brand regular, all beef, BBQ, Lean 'n Lite, or 100% wiener products.

**To the Dealer:** Maple Leaf Meats will reimburse the face value of coupon plus our specified handling fee providing you accept it from your customer on the purchase of any 450g Maple Leaf brand wiener product. Other applications may constitute fraud. Failure to send in, on request, evidence that sufficient stock was purchased in the previous 90 days to cover coupons presented will void coupons. Coupons submitted become our property. Reimbursement will be made only to retail distributors who redeem coupons. GTS credit is included in coupon value where applicable. For redemption mail to: Maple Leaf Meats, P.O. Box 3000, Saint John, New Brunswick, E2L 4L3. Limit one coupon per purchase. Coupon expires: April 30, 1998.



# SAVE \$1.00 NOW

when you purchase any one package of 500g Maple Leaf brand bacon product.

**To the Dealer:** Maple Leaf Meats will reimburse the face value of coupon plus our specified handling fee providing you accept it from your customer on the purchase of any 500g Maple Leaf brand bacon product. Other applications may constitute fraud. Failure to send in, on request, evidence that sufficient stock was purchased in the previous 90 days to cover coupons presented will void coupons. Coupons submitted become our property. Reimbursement will be made only to retail distributors who redeem coupons. GTS credit is included in coupon value where applicable. For redemption mail to: Maple Leaf Meats, P.O. Box 3000, Saint John, New Brunswick, E2L 4L3. Limit one coupon per purchase. Coupon expires: April 30, 1998.

