



**INVESTMENTS / RRSPs**  
For our recommendations or a review of your investments call 693-1100

**MIDLAND WALWYN**  
BLUE CHIP THINKING™

**IHOR DZUBAK, CA, MBA**  
Financial Advisor

# Stolen vehicle ditched on tracks

Officers in Acton are looking for information that could help identify the person responsible for an accident involving a stolen car last month.

Shortly before 3 a.m. on the Sunday morning of February 22, someone drove a car south on Third Line from Glen Lawson Road, south of Acton. The car left the

roadway, went airborne, flew over the railway tracks, and struck a railway warning sign. The vehicle came to rest obstructing the tracks, causing officers to contact Canadian National and stop trains from going through.

When officers approached the car, they found no driver. Evidence at the scene sug-

## Crime Stoppers OF HALTON

gested the car had been stolen. They learned the burgundy Dodge Spirit had been taken from an apartment building in Guelph a short time before the accident.

Investigators believe the driver may have suffered an injury from the accident. This may be a clue to the identity of the person responsible. Crime Stoppers would be interested in hearing from anyone who can suggest a possible suspect.

If you have any information that leads to an arrest in this or any other case, you may be eligible for a cash reward of up to \$1,000.

You need not give your name and your information can be taken with complete anonymity. Crime Stoppers does not subscribe to call display.

Call 1-800-222-TIPS or 825-TIPS.

## Top citizen award given on April 4

• from CITIZEN on page 4

who's no stranger to competition — or the accolades that have often come with it.

Continually praised by parents and teens for her expert coaching and commitment to player development, Martha Gleeson is the founder of the Monarch Basketball League, which now enjoys a roster list in the hundreds.

High school and public school teams have also benefited from her skills and passion. "Trying to enrich kids with the gifts I was given is very important to me," explained Ms Gleeson.

"My number one goal has always been to get kids to do their best. Some coaches tend to ignore those with less talent, but if I can help each player — regardless of their skills — improve, then I'm satisfied."

Her devotion to the community has by no means been restricted to athletic circles. She's been heavily involved in the Holy Rosary Church Parish Council and spearheaded the Marian Project, a plan for a seniors condominium residence in Milton.

Said her nominator, "Martha's a whirlwind with boundless energy and is extremely giving of her time."

While admitting they hadn't given it much thought, all three nominees felt that having a community-wide vote for the Citizen of the Year now is a good idea.

The recipient of the award — as well as those of the Business, Business Person and Civic Organization of the Year — will be announced during a gala evening at Halton Hills Place Saturday, Apr. 4.

# SPRING BREAK FOR GROWN-UPS.

## NO SECURITY DEPOSIT. NO DOWN PAYMENT.†

ON CHEVROLET CAVALIER, OLDSMOBILE INTRIGUE, AND CHEVY VENTURE

Chevrolet Cavalier

SMARTLEASE  
**\$223**<sup>\*\*</sup>

(36 months/NO DOWN)



2.2 litre engine, 5-speed manual transmission, 4-wheel ABS, dual front air bags, body side mouldings

PURCHASE  
**\$14,559**<sup>†</sup>

SMARTLEASE  
**\$188**<sup>\*\*</sup>

(36 months/\$1,180 down)

Oldsmobile Intrigue

SMARTLEASE  
**\$413**<sup>\*\*</sup>

(36 months/NO DOWN)



3800 Series II V6 engine, automatic transmission, 4-wheel ABS, dual front air bags, power windows/mirrors/door locks, AM/FM stereo with cassette, air conditioning

PURCHASE  
**\$25,999**<sup>†</sup>

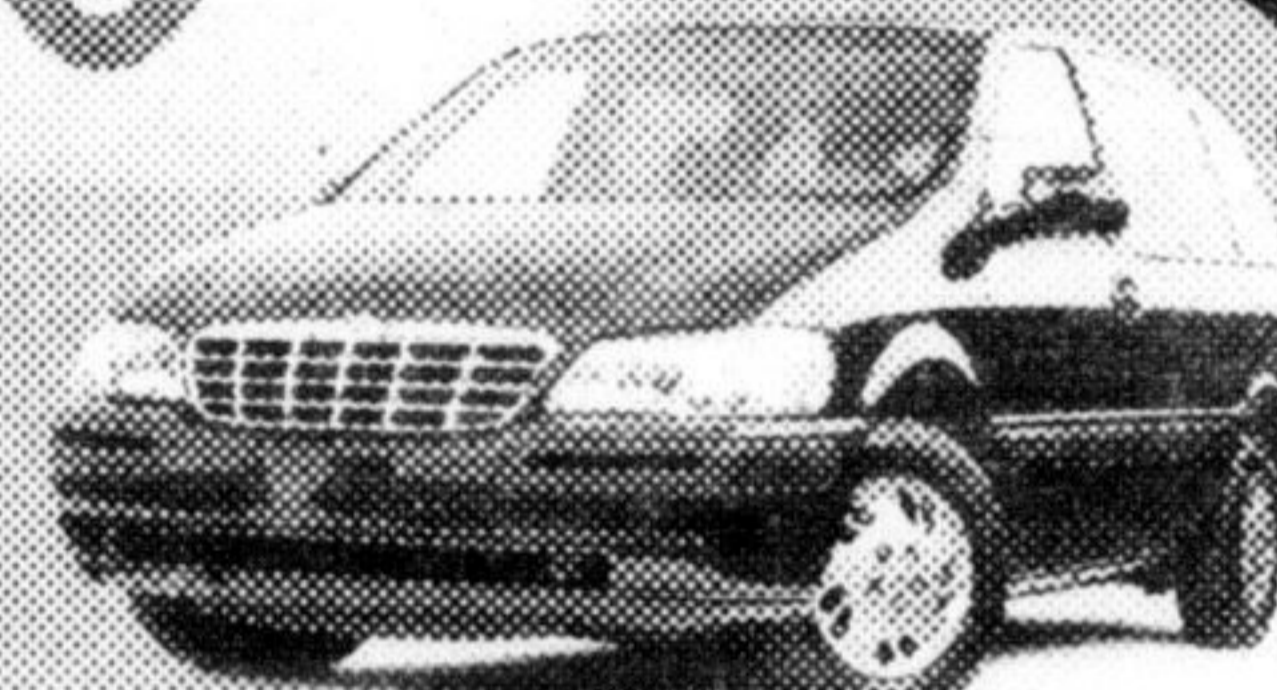
SMARTLEASE  
**\$349**<sup>\*\*</sup>

(36 months/\$2,070 down)

Chevy Venture

SMARTLEASE  
**\$338**<sup>\*\*</sup>

(36 months/NO DOWN)



3400 V6 engine, automatic transmission with overdrive, 4-wheel ABS, dual front and side air bags, air conditioning, programmable power door locks

PURCHASE  
**\$22,999**<sup>†</sup>

SMARTLEASE  
**\$279**<sup>\*\*</sup>

(36 months/\$1,530 down)

Chevrolet Malibu

PURCHASE  
**\$19,999**<sup>†</sup>



2.4 litre Twin Cam engine, automatic transmission, 4-wheel ABS, dual front air bags, AM/FM stereo with cassette, air conditioning

SMARTLEASE  
**\$288**<sup>\*\*</sup>

(36 months/\$1,800 down)

**3.9%**  
UP TO 48 MONTHS.  
GMAC PURCHASING FINANCING

Chevy Blazer 4WD

PURCHASE  
**\$33,999**<sup>†</sup>



Vortec 4300 V6 engine, automatic transmission, electronic transfer case, 4-wheel ABS, dual front air bags, air conditioning, AM/FM stereo with cassette, power windows/door locks/mirrors

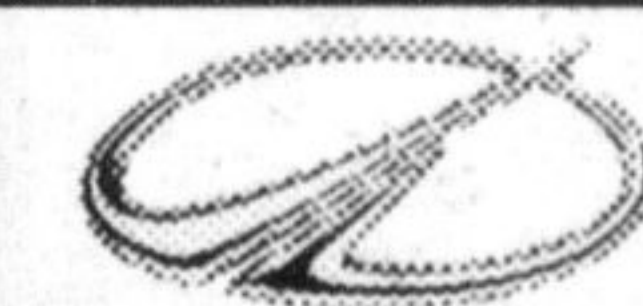
SMARTLEASE  
**\$369**<sup>\*\*</sup>

(36 months/\$3,000 down)

-HURRY IN, LIMITED TIME OFFER-



AVAILABLE ONLY AT YOUR CENTRAL ONTARIO  
CHEVROLET • OLDSMOBILE  
DEALERS



The GM Card®

You should know this: †No down payment on approved GMAC credit only. Offer available on Chevrolet Cavalier, Oldsmobile Intrigue, and Chevy Venture only. †Purchase financing on approved GMAC credit only, 3.9% financing available on Malibu and Blazer only. Example \$10,000 at 3.9% APR, the monthly payment is \$225.33 for 48 months. Cost of borrowing is \$815.84. Total obligation is \$10,815.84. Down payment, trade and/or security deposit may be required. Monthly payment and cost of borrowing will vary depending on amount borrowed and down payment/trade. ††Based on a 36 month lease of Cavalier Coupe/Intrigue/Venture. Total obligation is \$8,028/\$14,868/\$12,168. †††Based on a 36 month lease of Cavalier Coupe/Intrigue/Venture/Malibu/Blazer. A down payment or trade of \$1,180/\$2,070/\$1,430/\$1,800/\$3,000 is required. Total obligation is \$7,948/\$14,634/\$11,974/\$16,284/\$12,168. ††††Annual kilometre limit 20,000 km. \$0.08 per excess kilometre. Other lease options available. †††††Freight (\$695/\$695/\$620/\$785/\$840), licence, insurance and taxes not included. Dealer may sell or lease for less. †††††Offers apply to 1998 new or demonstrator models. Equipment as described and applies to qualified retail customers in Central Ontario only. Dealer order or trade may be necessary. Limited time offers which may not be combined with other offers. See your dealer for conditions and details. ††Registered Trade mark of General Motors Corporation. TD Bank licensed user of Mark.

**SHARON PRESSÉ**

R.N., LLB

Barrister & Solicitor

Suite 301

205 Main Street East  
Milton

**876-4656**

FAMILY LAW &  
DIVORCE