

GET MOVING IN '98

RE/MAX **Miltowne Realty Corp.**

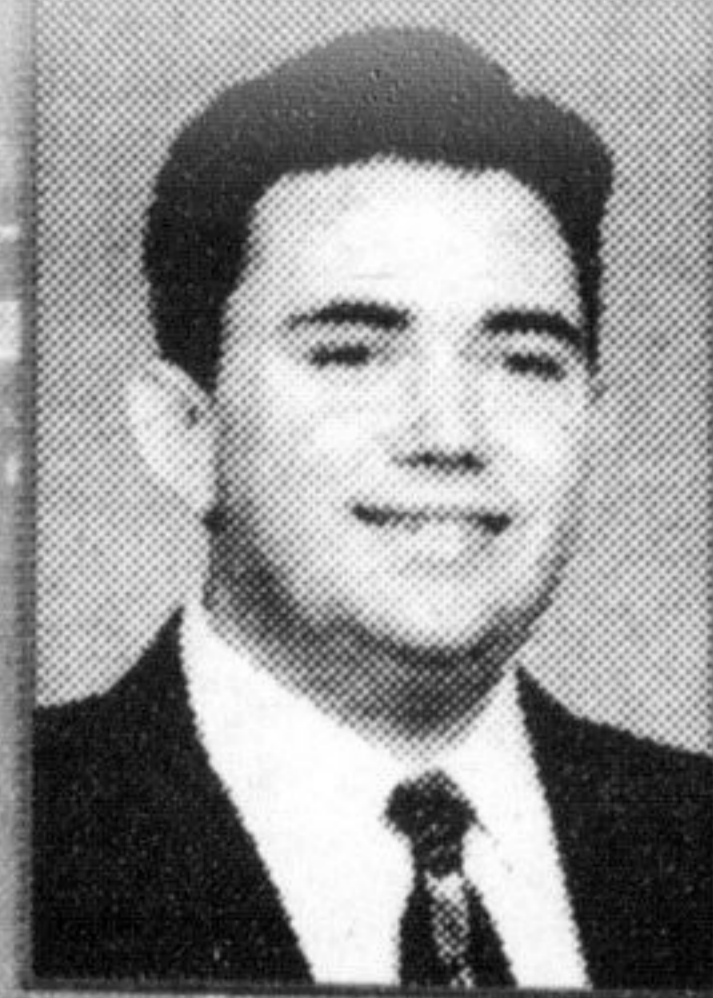
878-7777



e-mail: miltowne@globalserve.net

INDEPENDENTLY OWNED & OPERATED

E-MAIL MILTOWNE @ GLOBALSERVE.NET LIST WITH A RE/MAX PROFESSIONAL



Glen Thomas
Associate Broker
878-7777

PALOMINO RANCH



Discover this special subdivision. Lots of interest being generated. 1/2 acre to 1 acre lots. Bungalows & 2 storeys available. Renowned local builders. Call for details.

NEW LISTING



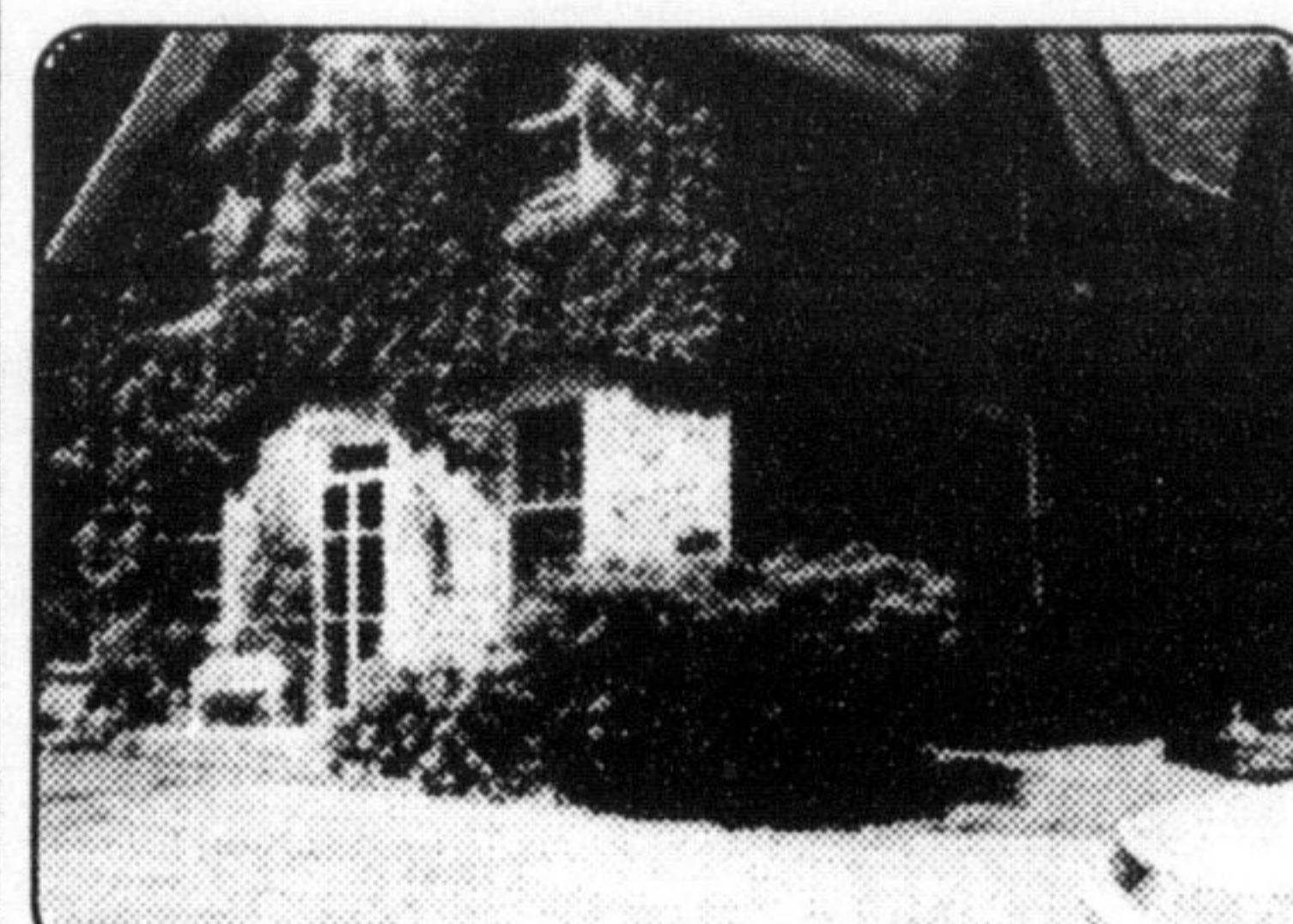
ONTARIO STREET
This 4 bedroom townhome features some newer carpeting popular design all located in mature complex, close to all local amenities. Listed at \$134,500.

TEXAS SIZED YARD



You'll be one happy homeowner in this huge in town lot. Large 4 bedroom home, very well appointed and features usable in-law suite in the lower level. New price \$242,900.

GOTHIC STONE



Be one of the lucky few who own a Heritage award winner. 1876 Gothic schoolhouse. Large principal rooms, fully restored on a large village lot. Call for details. \$425,000.



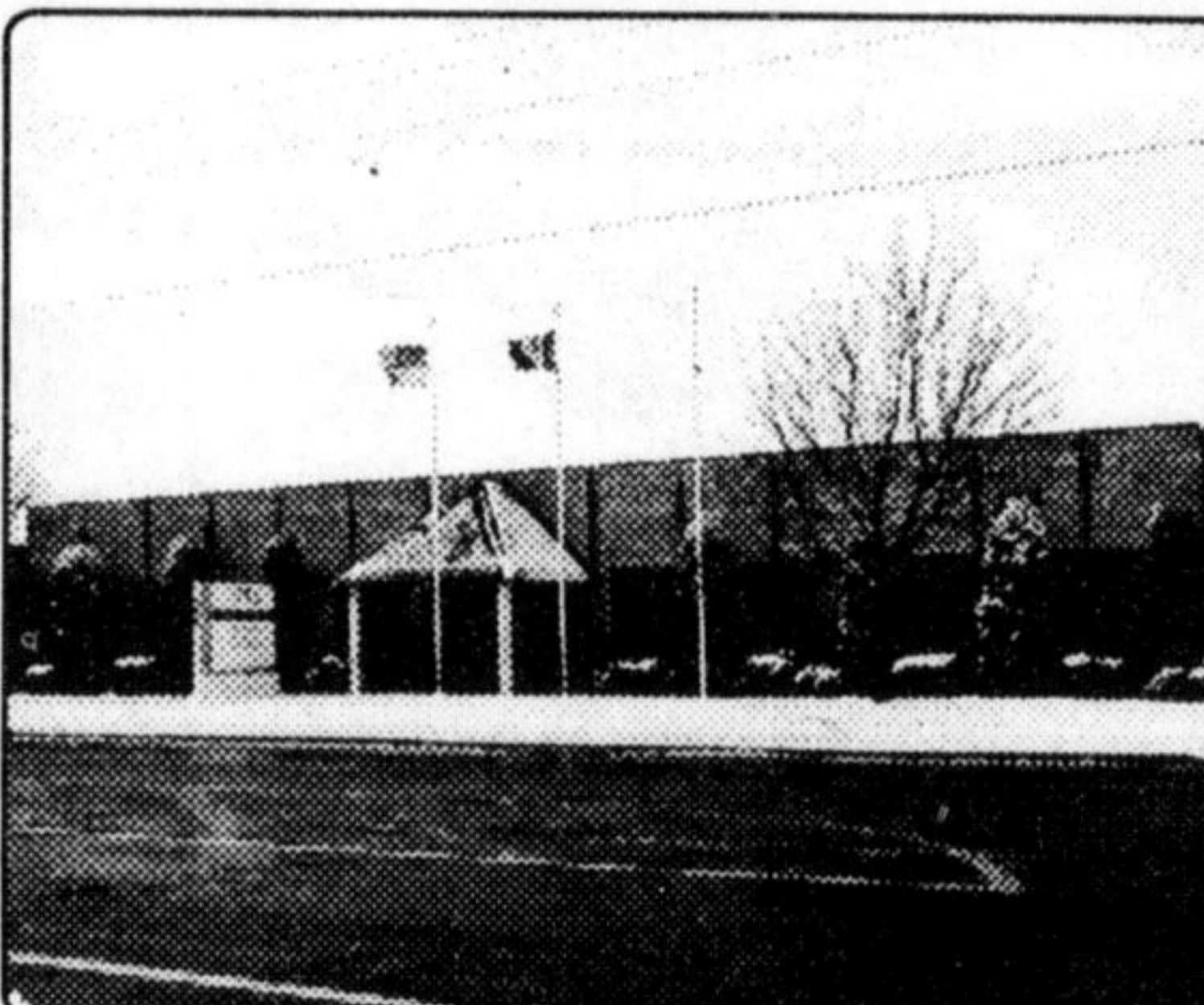
Gary Thomas
Broker/Owner
Res. 875-3700
878-7777

SCARCE AS HEN'S TEETH



1500 square foot industrial unit. 400 square feet of office. Large drive-in door & mezzanine storage. Only \$87,500

PRIME OFFICE SPACE



Up to 9,000 sq. ft. of Main St. office space. Can be divided to suit, 12 ft. ceilings. Great facility. Call for details

TWICE AS GOOD



In-town opportunity. Solid brick home on a double lot. might be able to sever off a separate lot and make some money, or build a new dream home. Call for details \$247,500

THIS CONDO DELIVERS



Milton's finest condo. \$132,500.

One bedroom unit in Village Parc known as the "BAY-FIELD". Large living room-dining room combo. This is

DETAIL CITY



The current owners have done an incredible job here. Well maintained and well decorated. Features upgraded kit., professionally finished rec. rm., nice curb appeal, close to all amenities. \$274,900. Call for more details

INTERVIEW ONE OF US BEFORE YOU LIST YOUR HOME! CALL FOR EVALUATION TODAY!



BETTY INGLE
Hall of Fame
Sales Representative
Registered Relocation Specialist

Office: 878-7777
Tor. Line: 825-4485

FOR THE GARDEN ENTHUSIAST



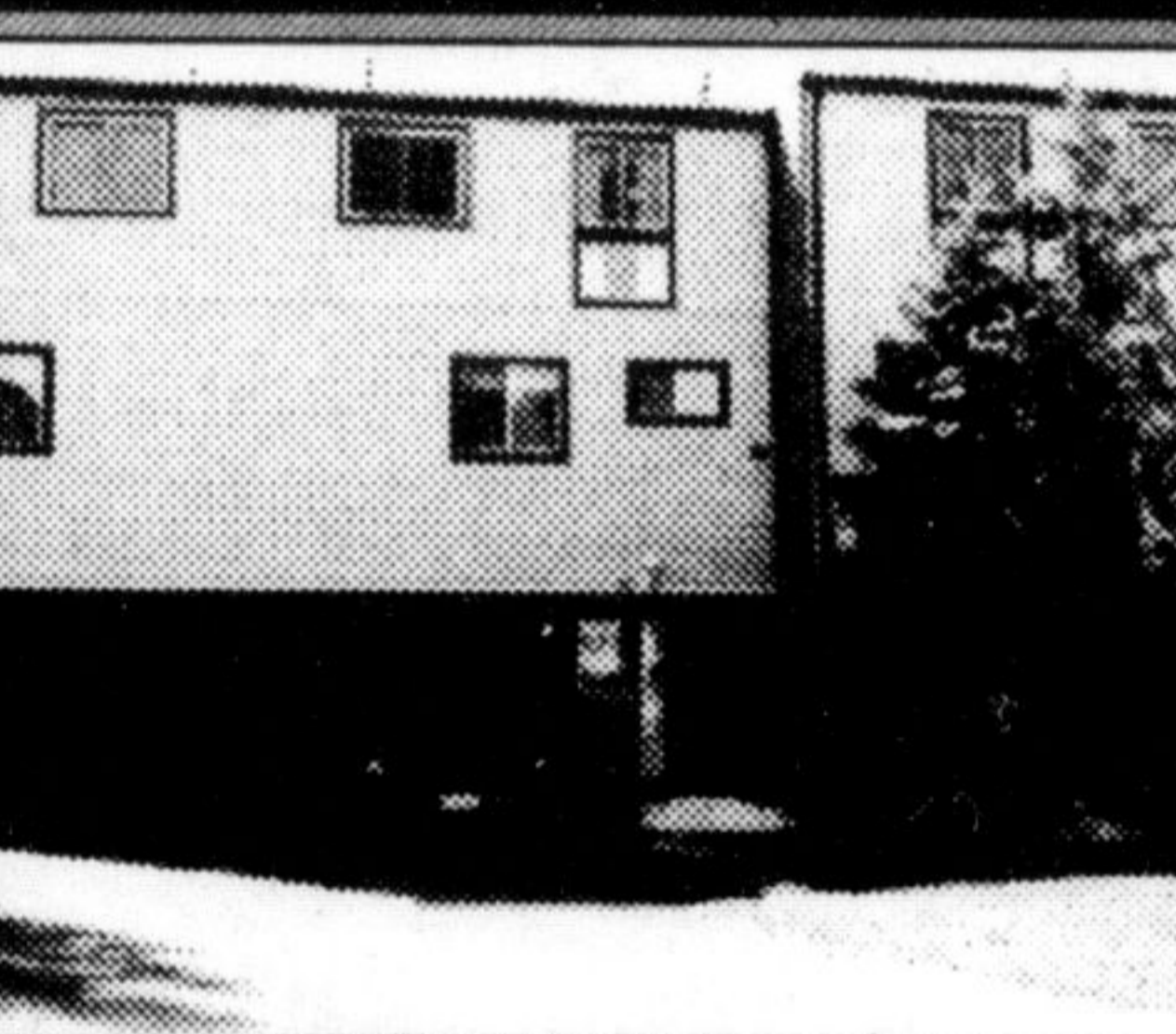
Spring is around the corner so phone for your appointment today with Betty. This home offers 4 bedrooms, combination living room/dining room, den, self contained apartment, 2 bedrooms, private entrance and close to schools. Priced to sell \$242,900.

CLOSE TO TOWN



This lovely bungalow, beautifully landscaped offers living room with large bay window, 3+2 bedrooms, huge eat-in kitchen with walkout to garden/pond. many upgrades including oversized work shop. Please call Betty for your appointment today. \$324,900.

SOLD IN 14 HOURS



ABSOLUTE PERFECTION.
Shows like no other - oak floors and banisters, brand new carpeting. New kitchen & furnace. Professionally finished. 12+

165 ACRES IN NASSAGAWEYA



- 6 bedroom home built in 1910
- 2 bathrooms
- Separate living room and dining room
- Large country kitchen
- 3 car garage, driveshed and old barn
- Pond
- Separate 2-bedroom cottage
- Recent survey

NEW PRICE \$539,900.

For more details on this property and information on other listings, please call:

KATRINA WALTON
SALES REPRESENTATIVE
Office: 878-7777



★ LIST WITH SHERYL ★ SELL WITH SHERYL ★ LIST WITH SHERYL ★ SELL WITH SHERYL



SHERYL GRAY
Sales Representative
Office: 878-7777
Res. 875-1121
Tor. Line 825-4485
Serving Milton Since 1984

LISTINGS URGENTLY NEEDED

- Bungalow or split level in Timberlea or Bronte Meadows
- Country Property - 2-3 acres, \$200,000 range - **FIRM BUYERS**
- Home with inground pool, move in condition, main floor laundry.

For a PRESSURE FREE, No obligation evaluation, call Sheryl Gray at 878-7777

★ LIST WITH SHERYL ★ SELL WITH SHERYL ★ LIST WITH SHERYL ★ SELL WITH SHERYL

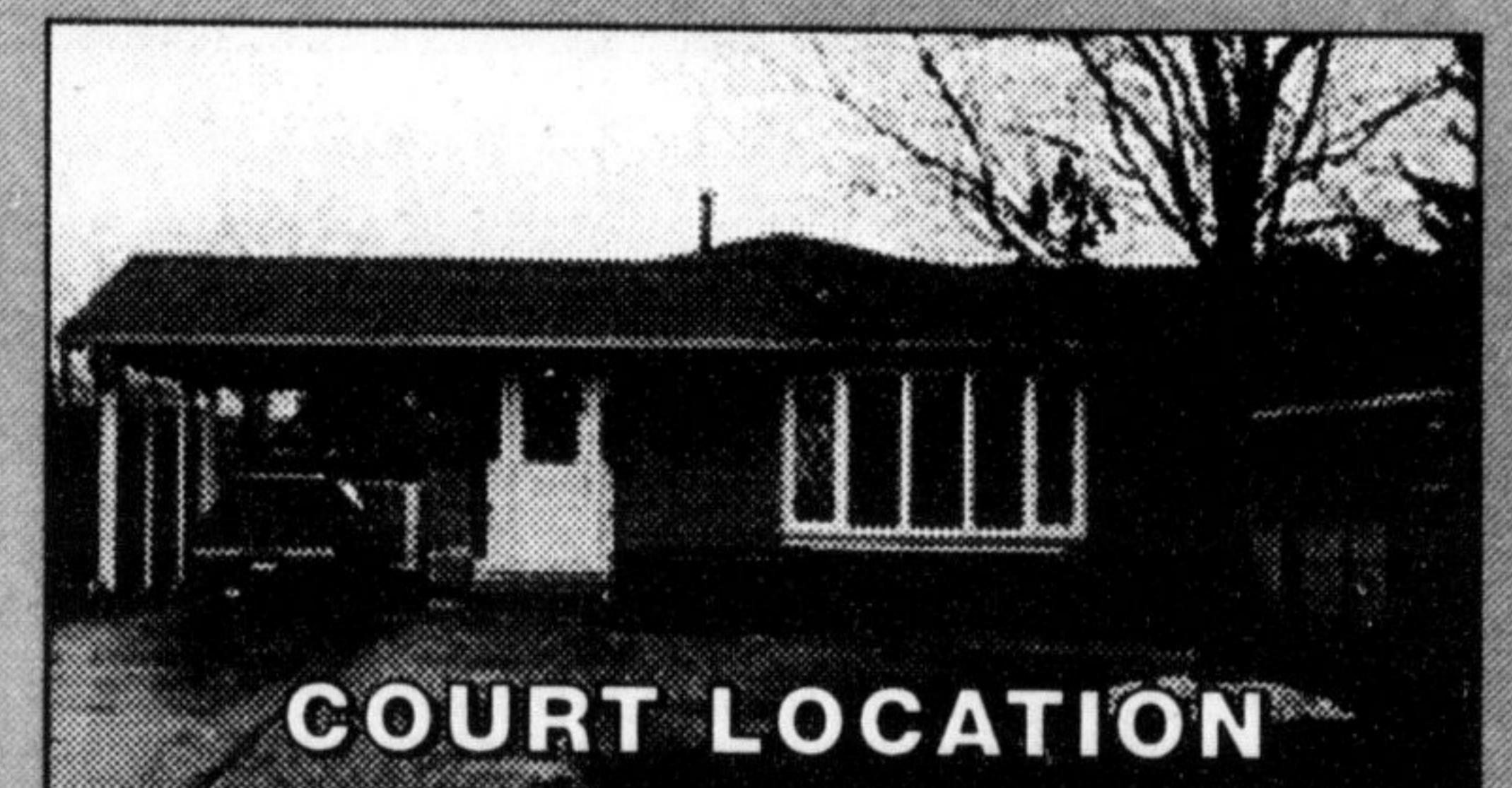


KEVIN HOWDEN

Sales Representative
Office878-7777
Toronto825-4485
Res.854-2973



POTENTIAL PROFESSIONAL USE OR CALL IT HOME
Absolute charm & character, this elegant 1918 built home embraces many original features. Magnificent oak staircase, pine floors, high ceilings & baseboards, & pocket doors. Roof resingled '92, new furnace & C/A '92. Separate upper level living quarters with own entrance. Triple car garage with loft.
Asking \$499,900\$399,900.



COURT LOCATION

ATTRACTIVE WELL MAINTAINED BACKSPLIT with inground pool in beautifully landscaped yard. Great for entertaining. Features all new windows 96, aluminum eaves & soffits, central air, central vac, ceramic flooring in kitchen & rec room. Don't miss this opportunity.
Please call Kevin \$499,900NOW \$196,900.

INDUSTRIAL UNIT

BRONTE ST. LOCATION.
Approx. 1600 sq.ft., 10 ft x 12 ft bay door, mezzanine ...
\$85,000.